

Valencia County Report, 2005

Demographics

In 2005, there were 48,766 licensed drivers in Valencia County. Of these, there were 24,232 females and 24,534 males. The population in Valencia County in 2005 was 69,417. The total number of crashes in 2005 was 992, yielding a crash rate of 14 per thousand people (the total number of crashes 992 divided by the population 69,417 multiplied by 1,000). The corresponding rate for the state was 25 per thousand people.

General Crash Information

Since 1996 the number of crashes has shown no consistent pattern. Fatal and injury crashes have also shown no consistent pattern since 1996. Belt usage (as a percentage) has increased from last year, while belt usage in crashes involving visible and incapacitating injuries has also increased.

Alcohol-related Crash Information

Information about alcohol-involved crashes is included in all sections of this report. Of the 189 people convicted of DWI in Valencia County in 2005, 53 percent were first-time DWI convictions (number of first convictions 100 divided by the total number of people convicted 189 multiplied by 100). The corresponding percentage for the state was 61.

Crash Specifics

Crashes involving other vehicles were the most common class, accounting for 74 percent of all crashes. Crashes involving overturns and other vehicles were the most common crash classes which resulted in fatalities. Passenger cars were the vehicle type most often involved in crashes, accounting for 47 percent of all vehicles in crashes. Pickups accounted for 26 percent of vehicles involved in crashes. Together these two vehicle types comprised 74 percent of the vehicles involved in injury crashes. The three most common top contributing factors were following too close, driver inattention, and failing to yield. There were 10 fatal crashes in 2005. The most common top contributing factor for the fatal crashes was alcohol involvement.

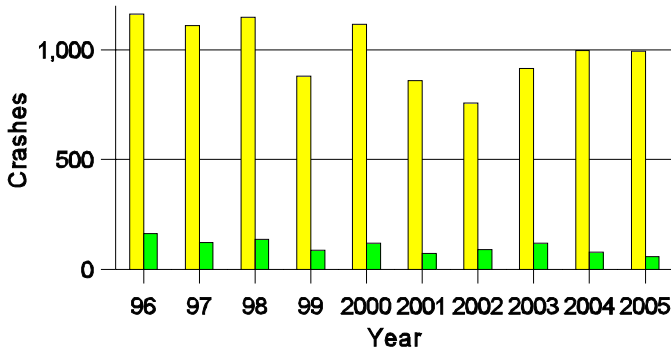
People in Crashes

Overall, males were 56 percent of drivers in crashes, although they account for only 50 percent of licensed drivers in Valencia County. There were six pedestrians involved in crashes. In 2005, three 'teenagers' and four young adults were killed in crashes in Valencia County. Statewide 17 percent of alcohol-involved drivers were under 21; in Valencia County 26 percent were under 21.

Note: The 1999 crash file contains 15% fewer crashes than the 1998 file. This may be due to problems implementing the new system after the old system failed, or to under reporting. Care should be used in interpreting differences between 1999 and other years in this report.

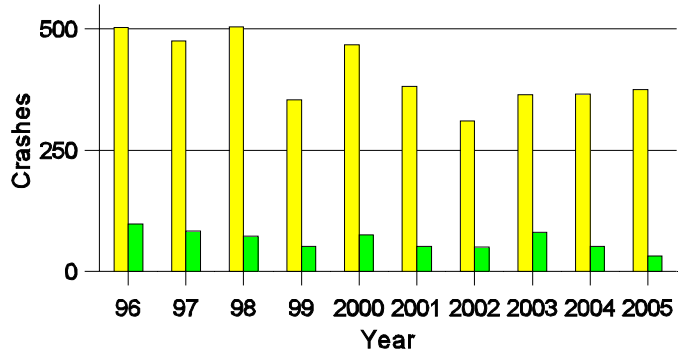
- Location of arrest/conviction was determined by police agency/court location, not driver residence.
- Crashes and drivers were counted by the city of occurrence/residence.
- Population was counted according to the Census definition, using 2005 estimates.
- Young adults are people between the ages of 20 and 24.
'Teenagers' are people between the ages of 15 and 19.
- Tables only include variable values for which there are data.

Crashes in Valencia County by Alcohol Involvement



■ All Crashes
■ Alcohol-involved Crashes

Fatal and Injury Crashes in Valencia County by Alcohol Involvement



■ All Fatal and Injury Crashes
■ Alcohol-involved Fatal and Injury Crashes

Passenger Vehicle Seatbelt Usage and Injuries in Valencia County, 2003-2005

Injury Level	2005		2004		2003	
	Total	No Belt	Total	No Belt	Total	No Belt
Killed	6	2	12	6	9	7
Incapacitating injury	70	3	102	12	121	15
Visible injury	102	5	106	13	113	26
Complaint of injury	315	6	326	6	266	11
Unhurt	1,807	17	1,934	19	1,622	42
Total	2,300	33	2,480	56	2,131	101

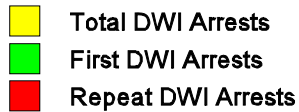
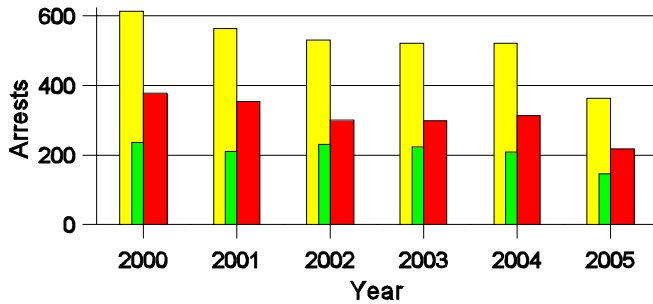
Lifetime DWI Convictions for Drivers Convicted of DWI Violations in Valencia County, 2005

Convictions	Since 2000	Since 1981
1st	150	100
2nd	27	39
3rd	7	24
4th	4	14
5th	0	6
6th	0	1
7th	0	2
8th	0	1
9th	0	0
10 or more	1	2
Total	189	189

Convictions are counts of people convicted of DWI by 7/2006 for violations in 2005 in Valencia County. Convictions are not comparable to arrests.

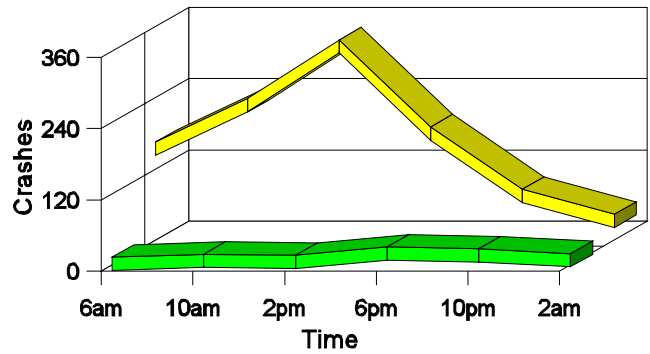
DWI Arrests in Valencia County

Showing First Arrests and Repeat Offenders



Crashes in Valencia County

by Hour and Alcohol Involvement



Crashes in Valencia County by Class, 2005

Class	Crashes					People	
	Total	% of Total	Fatal	% of Fatal	Injury	Killed	Injured
Other vehicle	732	74	2	20	271	4	472
Pedestrian	6	1	0	0	6	0	6
Fixed object	115	12	0	0	32	0	37
Veh. on other roadway	3	0	0	0	1	0	1
Parked vehicle	30	3	0	0	6	0	7
Overturn	76	8	6	60	44	8	62
Other non-collision	7	1	1	10	1	1	1
Pedalcyclist	1	0	1	10	0	1	0
Railroad train	1	0	0	0	1	0	1
Animal	19	2	0	0	3	0	5
Other object	2	0	0	0	0	0	0
Total	992	100	10	100	365	14	592

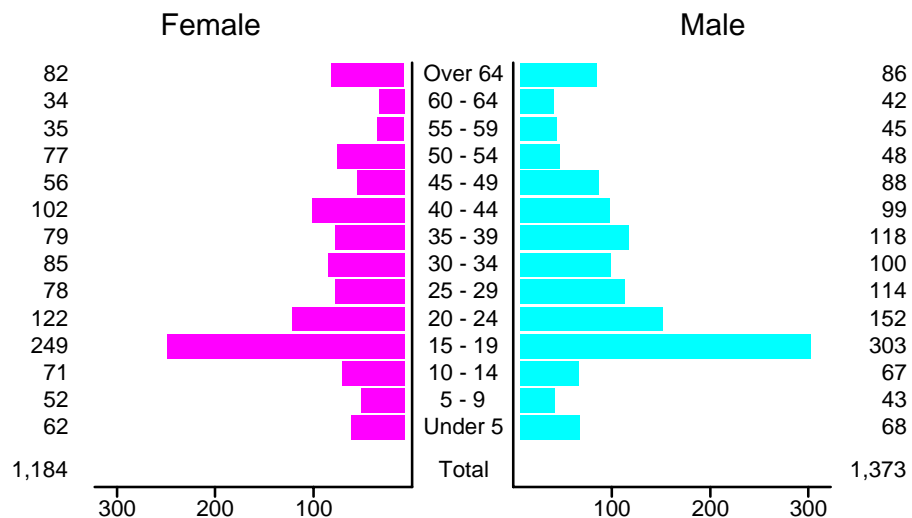
Crashes in Valencia County by Vehicle Type, 2005

Vehicle Type	Vehicles					People	
	Total	% of Total	Fatal	% of Fatal	Injury	Killed	Injured
Passenger car	851	47	6	46	351	6	318
Pickup	482	26	4	31	158	4	91
Semi	51	3	0	0	17	0	11
Bus	16	1	0	0	10	0	41
Motorcycle	25	1	0	0	18	0	20
Pedalcyclist	2	0	1	8	1	1	2
Pedestrian	6	0	0	0	6	0	6
Van/4 WD	276	15	2	15	106	3	91
Other	17	1	0	0	1	0	1
Unknown	98	5	0	0	23	0	11
Total	1,824	100	13	100	691	14	592

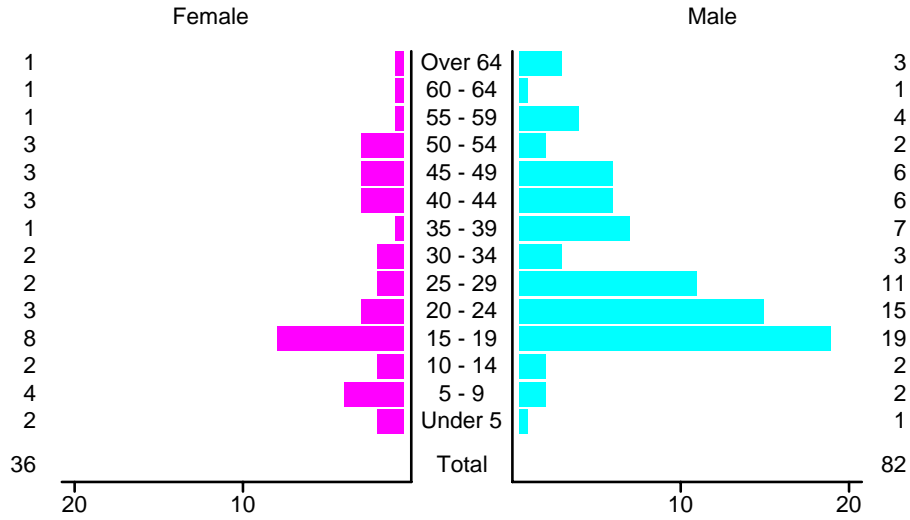
Crashes in Valencia County by Top Contributing Factor, 2005

Contributing Factor	Crashes				People		
	Total	% of Total	Fatal	% of Fatal	Injury	Killed	Injured
Alcohol involvement	64	6	5	50	32	8	53
Red light running	45	5	0	0	21	0	24
Failing to yield	165	17	1	10	66	1	123
Excessive speed	126	13	2	20	50	2	72
Driving left of center	28	3	0	0	12	0	16
Following too close	207	21	0	0	82	0	117
Improper turning	28	3	0	0	11	0	18
Improper overtaking	25	3	0	0	5	0	13
Improper backing	25	3	0	0	2	0	4
Inop. traffic control	2	0	0	0	1	0	1
Mechanical defect	22	2	1	10	10	2	14
Driver inattention	185	19	0	0	59	0	118
Other	70	7	1	10	14	1	19
Total	992	100	10	100	365	14	592

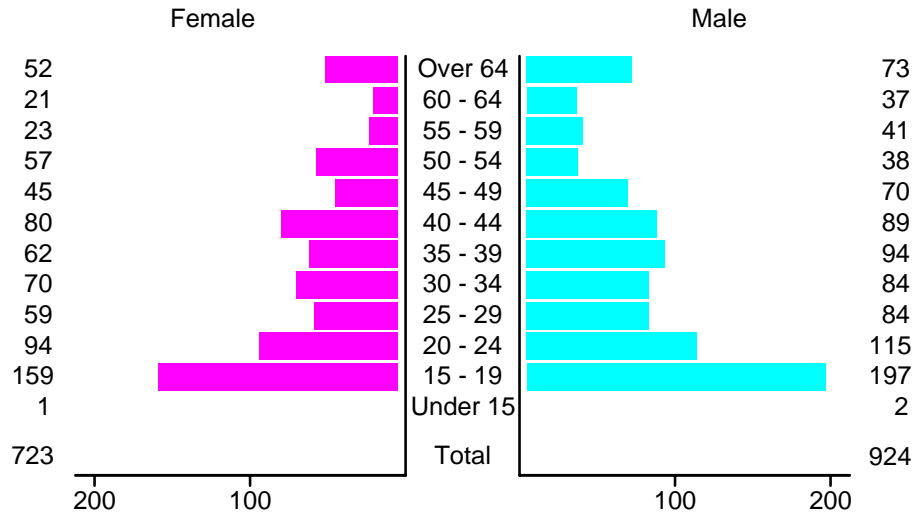
People in Crashes by Age and Sex in Valencia County, 2005



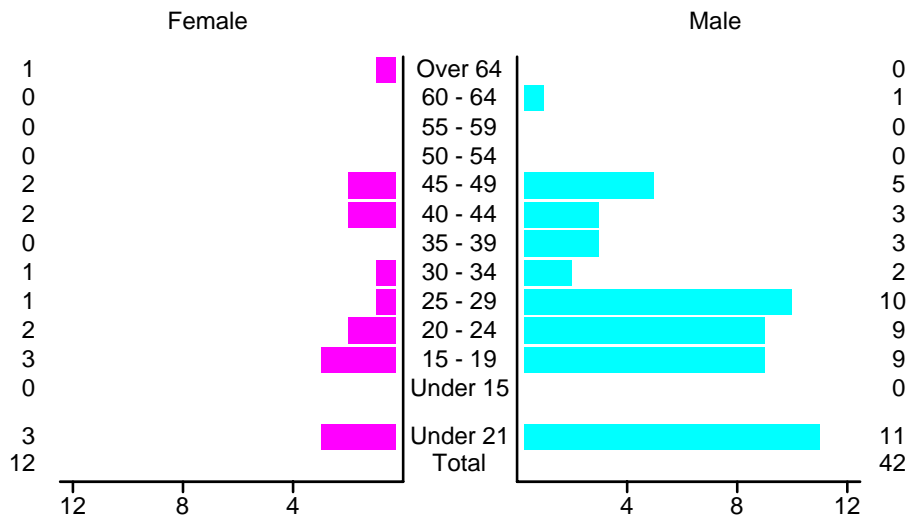
People in Alcohol-Involved Crashes in Valencia County, 2005 by Age and Sex



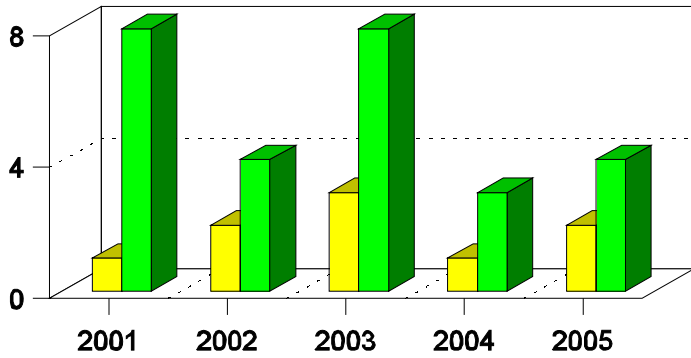
Drivers in Crashes by Age and Sex in Valencia County, 2005



Alcohol-Involved Drivers in Crashes in Valencia County, 2005 by Age and Sex

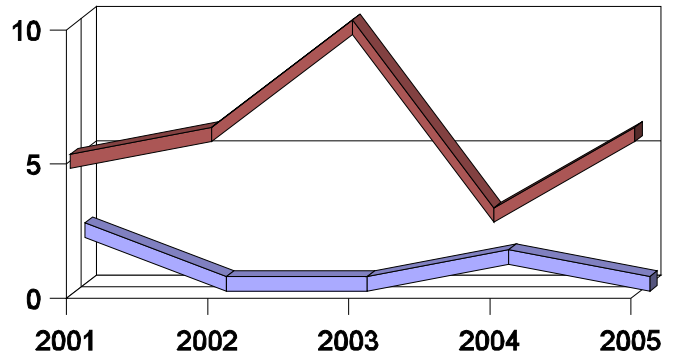


**Pedestrian Crashes in Valencia County
by Pedestrian Alcohol Involvement**



■ Alcohol-involved Pedestrians
■ Pedestrians Not Alcohol-involved

**Pedestrian Crashes in Valencia County
by Age Group**



■ Pedestrians 12 and Younger
■ Pedestrians 13 and Older

'Teenagers' and Young Adults in Crashes in Valencia County by Vehicle Type, 2005

Vehicle	'Teenage' Drivers			Young Adult Drivers		
	Total	Fatal	Injury	Total	Fatal	Injury
Passenger car	225	0	97	115	1	51
Pickup	81	1	26	54	1	21
Semi	0	0	0	3	0	0
Bus	0	0	0	3	0	0
Motorcycle	1	0	1	3	0	3
Pedalcyclist	0	0	0	1	0	1
Pedestrian	0	0	0	1	0	1
Van/4 WD	42	0	15	25	1	12
Other	0	0	0	2	0	0
Unknown	7	0	1	5	0	4
Total	356	1	140	212	3	93

'Teenagers' and Young Adults in Crashes in Valencia County, 1996-2005

Year	'Teenagers'				Young Adults			
	All Crashes		Alcohol Crashes		All Crashes		Alcohol Crashes	
	Killed	Injured	Killed	Injured	Killed	Injured	Killed	Injured
2005	3	104	2	12	4	65	2	7
2004	2	95	0	9	2	78	2	16
2003	2	111	2	18	0	75	0	16
2002	5	82	5	15	1	42	1	3
2001	2	103	1	14	6	80	2	18
2000	2	147	1	20	3	84	0	15
1999	2	114	2	7	1	60	0	6
1998	1	170	1	17	1	82	1	15
1997	1	160	1	27	0	88	0	20
1996	2	157	0	30	3	95	2	28