

Albuquerque Community Report, 2005

Demographics

In 2005, there were 407,855 licensed drivers in Albuquerque. Of these, there were 208,052 females and 199,803 males. The population of Albuquerque was 499,632. The total number of crashes in 2005 was 20,433, yielding a crash rate of 41 per thousand people (total number of crashes 20,433 divided by total population 499,632 times 1,000). The corresponding rate for the state was 25 per thousand people.

General Crash Information

Since 1996 the number of crashes has shown no consistent pattern. Fatal and injury crashes have shown no consistent pattern since 1996. Belt usage (as a percentage) has increased from last year, while belt usage in crashes involving visible and incapacitating injuries has also increased. There were no fatalities in the seven intersections with the most crashes in 2005. Of these intersections, four involve Coors Blvd. NW.

Alcohol-related Crash Information

Information about alcohol-involved crashes is included in all sections of this report. Of the 2,275 people convicted of DWI in Albuquerque, 72 percent were first-time DWI convictions (number of first convictions 1,643 divided by the total number of people convicted 2,275 times 100). The corresponding percent for the state is 61.

Crash Specifics

Crashes involving other vehicles were the most common class, accounting for 85 percent of all crashes. Crashes involving other vehicles and pedestrians were the most common crash classes which resulted in fatalities. Passenger cars were the vehicle type most often involved in crashes, accounting for 52 percent of all vehicles in crashes. Pickups accounted for 19 percent of vehicles involved in crashes. Together these two vehicle types comprised 72 percent of the vehicles involved in injury crashes. The three most common top contributing factors were driver inattention, following too close, and failing to yield. There were 56 fatal crashes in 2005. The most common top contributing factor for the fatal crashes was alcohol involvement.

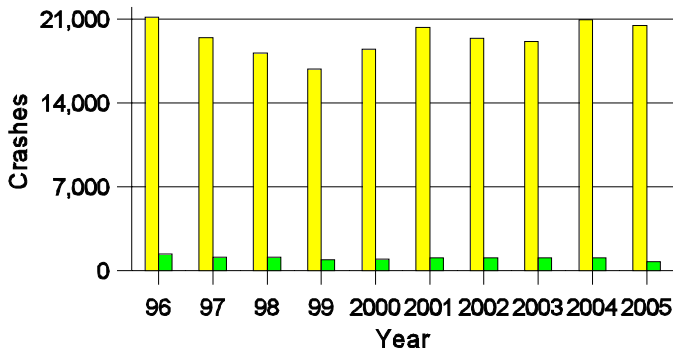
People in Crashes

Overall, males were 54 percent of drivers in crashes, although they account for only 49 percent of licensed drivers in Albuquerque. There were 206 pedestrians involved in crashes. In 2005, four 'teenagers' and six young adults were killed in crashes in Albuquerque. Statewide 17 percent of alcohol-involved drivers were under 21; in Albuquerque 17 percent were under 21.

Note: The 1999 crash file contains 15% fewer crashes than the 1998 file. This may be due to problems implementing the new system after the old system failed, or to under reporting. Care should be used in interpreting differences between 1999 and other years in this report.

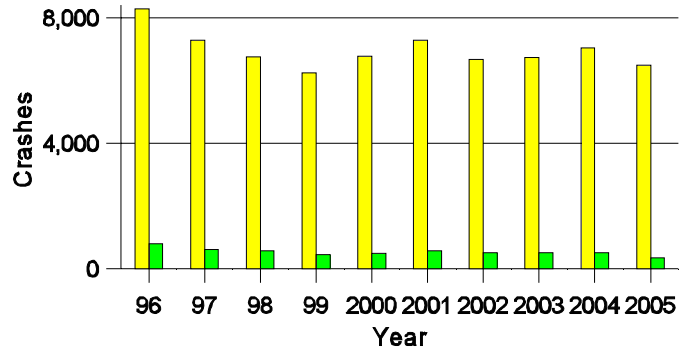
- Location of arrest/conviction was determined by police agency/court location, not driver residence.
- Crashes and drivers were counted by the city of occurrence/residence.
- Population was counted according to the Census definition.
The city population data is from the most current 2005 estimates.
- Young adults are people between the ages of 20 and 24.
- 'Teenagers' are people between the ages of 15 and 19.
- Tables only include variable values for which there are data.

**Crashes in Albuquerque
by Alcohol Involvement**



■ All Crashes
■ Alcohol-involved Crashes

**Fatal and Injury Crashes in Albuquerque
by Alcohol Involvement**



■ All Fatal and Injury Crashes
■ Alcohol-involved Fatal and Injury Crashes

Passenger Vehicle Seatbelt Usage and Injuries in Albuquerque, 2003-2005

Injury Level	2005		2004		2003	
	Total	No Belt	Total	No Belt	Total	No Belt
Killed	27	11	35	13	23	13
Incapacitating injury	438	16	638	69	598	67
Visible injury	994	47	1,180	86	1,133	97
Complaint of injury	6,621	51	7,281	72	6,971	88
Unhurt	34,590	143	38,215	260	33,823	309
Total	42,670	268	47,349	500	42,548	574

The Seven Intersections in Albuquerque with the Most Crashes, 2005

Intersection	Crashes			People	
	Total	Fatal	Injury	Killed	Injured
Central Ave W @ Coors Blvd NW	90	0	37	0	57
Coors Blvd NW @ Irving Blvd NW	93	0	23	0	41
Coors Blvd NW @ Paseo Del Norte Blvd NW	159	0	35	0	53
Coors Blvd NW @ Quail Rd NW	116	0	32	0	43
Jefferson St NE @ Paseo Del Norte Blvd NE	116	0	39	0	52
Montgomery Blvd NE @ Pan American East Hwy NE	91	0	35	0	50
Montgomery Blvd NE @ San Mateo Blvd NE	124	0	32	0	41

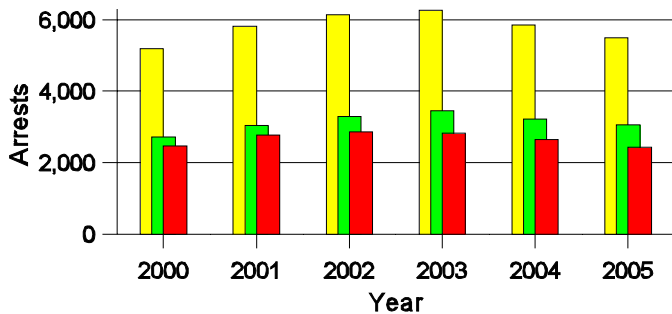
**Lifetime DWI Convictions for Drivers
Convicted of DWI Violations in Albuquerque, 2005**

Convictions	Since 2000	Since 1981
1st	1,932	1,643
2nd	298	408
3rd	41	140
4th	4	53
5th	0	17
6th	0	7
7th	0	4
8th	0	2
9th	0	1
10 or more	0	0
Total	2,275	2,275

Convictions are counts of people convicted of DWI by 7/2006 for violations in 2005 in Albuquerque. Convictions are not comparable to arrests.

DWI Arrests in Albuquerque

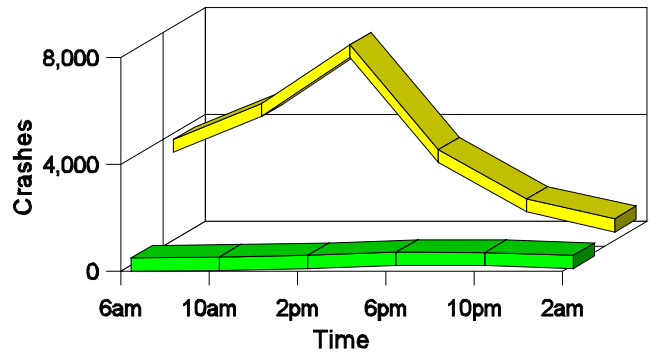
Showing First Arrests and Repeat Offenders



■ Total DWI Arrests
■ First DWI Arrests
■ Repeat DWI Arrests

Crashes in Albuquerque

by Hour and Alcohol Involvement



■ All Crashes
■ Alcohol-involved Crashes

Crashes in Albuquerque by Class, 2005

Class	Crashes				People		
	Total	% of Total	Fatal	% of Fatal	Injury	Killed	Injured
Other vehicle	17,437	85	24	43	5,523	30	8,346
Pedestrian	198	1	21	38	160	21	170
Fixed object	1,341	7	4	7	339	6	402
Veh. on other roadway	12	0	0	0	1	0	2
Parked vehicle	846	4	0	0	87	0	110
Overturn	217	1	4	7	136	4	174
Other non-collision	114	1	1	2	38	1	42
Pedalcyclist	171	1	1	2	137	1	139
Railroad train	1	0	1	2	0	1	0
Animal	12	0	0	0	3	0	3
Other object	84	0	0	0	9	0	11
Total	20,433	100	56	100	6,433	64	9,399

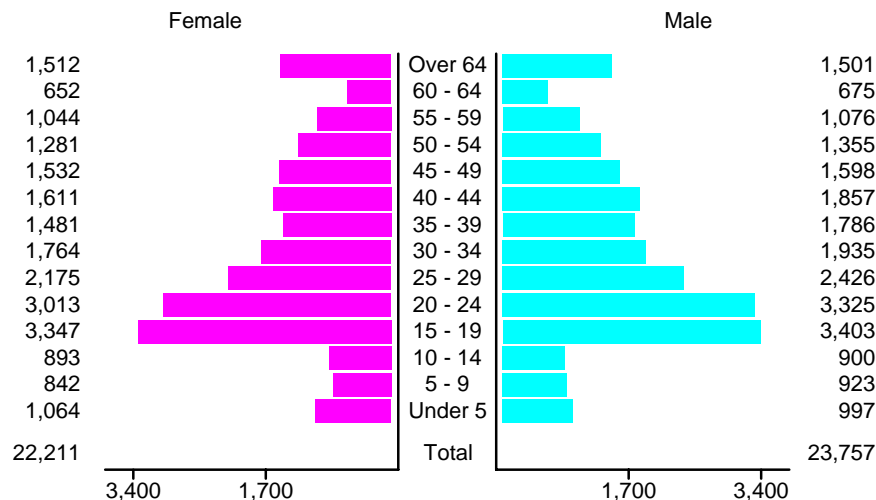
Crashes in Albuquerque by Vehicle Type, 2005

Vehicle Type	Vehicles				People		
	Total	% of Total	Fatal	% of Fatal	Injury	Killed	Injured
Passenger car	21,498	52	40	34	7,380	19	5,691
Pickup	7,920	19	13	11	2,453	6	1,295
Semi	803	2	5	4	155	1	22
Bus	199	0	1	1	39	0	30
Motorcycle	398	1	7	6	301	7	316
Pedalcyclist	179	0	1	1	141	1	138
Pedestrian	206	0	21	18	167	21	167
Van/4 WD	7,124	17	20	17	2,345	9	1,563
Other	169	0	4	3	34	0	13
Unknown	2,849	7	4	3	550	0	164
Total	41,345	100	116	100	13,565	64	9,399

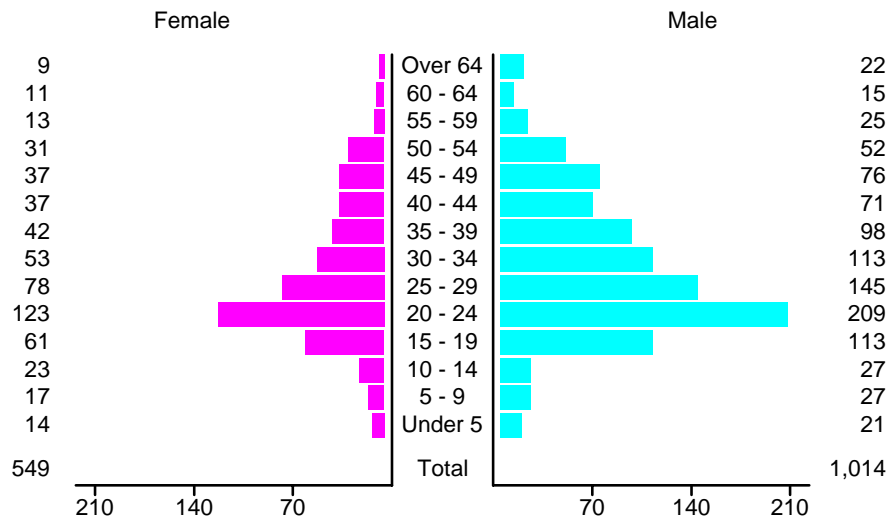
Crashes in Albuquerque by Top Contributing Factor, 2005

Contributing	Crashes				People		
	Total	% of Total	Fatal	% of Fatal	Injury	Killed	Injured
Alcohol involvement	785	4	30	54	337	36	527
Red light running	1,614	8	3	5	693	5	1,114
Failing to yield	2,921	14	2	4	1,059	2	1,625
Excessive speed	1,588	8	4	7	524	4	754
Driving left of center	208	1	1	2	56	1	90
Following too close	4,273	21	3	5	1,405	3	2,029
Improper turning	1,101	5	0	0	239	0	368
Improper overtaking	298	1	0	0	52	0	64
Improper backing	465	2	0	0	37	0	46
Inop. traffic control	41	0	0	0	6	0	7
Mechanical defect	332	2	0	0	101	0	147
Driver inattention	5,630	28	2	4	1,628	2	2,275
Improper driving	4	0	1	2	0	1	0
Other	1,173	6	10	18	296	10	353
Total	20,433	100	56	100	6,433	64	9,399

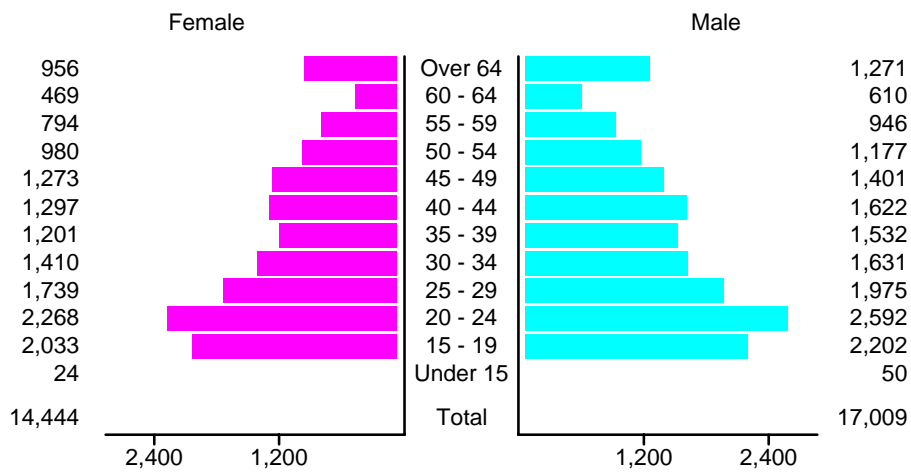
People in Crashes by Age and Sex in Albuquerque, 2005



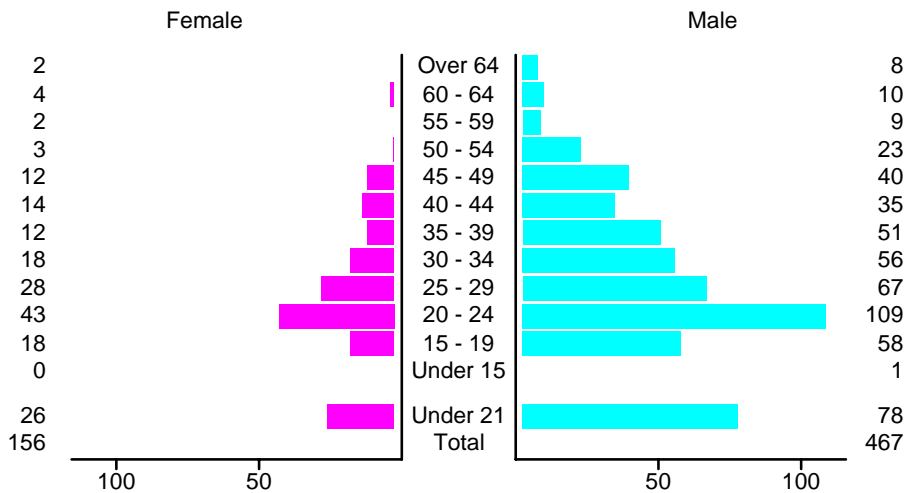
People in Alcohol-Involved Crashes in Albuquerque, 2005 by Age and Sex



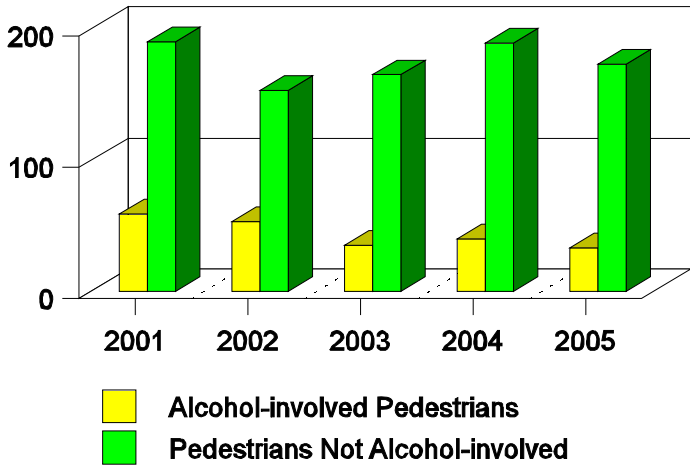
Drivers in Crashes by Age and Sex in Albuquerque, 2005



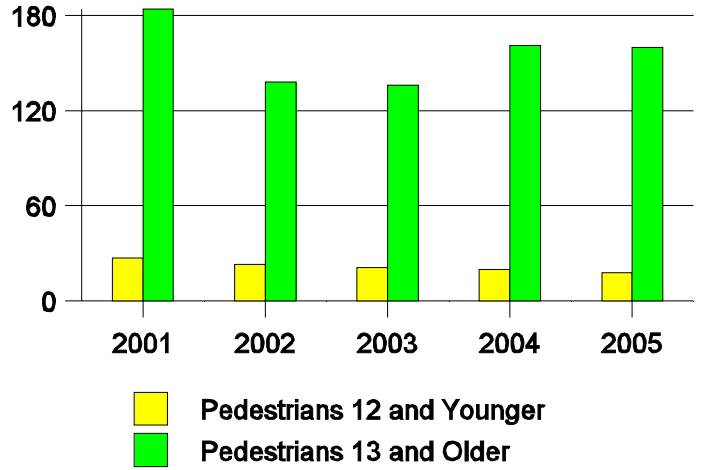
Alcohol-Involved Drivers in Crashes in Albuquerque, 2005 by Age and Sex



**Pedestrian in Crashes in Albuquerque
by Pedestrian Alcohol Involvement**



**Pedestrian in Crashes in Albuquerque
by Age Group**



'Teenagers' and Young Adults in Crashes in Albuquerque by Vehicle Type, 2005

Vehicle	'Teenage' Drivers			Young Adult Drivers		
	Total	Fatal	Injury	Total	Fatal	Injury
Passenger car	2,992	6	1,097	3,209	5	1,156
Pickup	546	0	170	793	2	278
Semi	1	0	1	37	0	7
Bus	0	0	0	8	0	1
Motorcycle	33	0	31	73	1	60
Pedalcyclist	15	0	13	15	0	12
Pedestrian	10	0	10	10	2	7
Van/4 WD	550	3	185	612	4	210
Other	5	0	0	13	0	2
Unknown	116	0	42	127	0	42
Total	4,268	9	1,549	4,897	14	1,775

'Teenagers' and Young Adults Killed and Injured in Crashes by Year in Albuquerque, 1996-2005

Year	'Teenagers'				Young Adults			
	All Crashes		Alcohol Crashes		All Crashes		Alcohol Crashes	
	Killed	Injured	Killed	Injured	Killed	Injured	Killed	Injured
2005	4	1,203	2	59	6	1,194	4	94
2004	9	1,361	7	96	8	1,337	4	132
2003	6	1,355	5	123	6	1,354	1	134
2002	4	1,369	3	102	7	1,296	3	127
2001	6	1,555	3	135	4	1,441	2	139
2000	5	1,508	1	105	10	1,247	6	110
1999	11	1,405	6	113	7	1,166	4	129
1998	0	1,558	0	142	6	1,251	4	141
1997	6	1,574	4	162	3	1,307	1	146
1996	8	1,837	3	174	7	1,540	4	236