

# Aztec Community Report, 2005

## Demographics

In 2005, there were 11,179 licensed drivers in Aztec. Of these, there were 5,597 females and 5,582 males. The population of Aztec was 7,084. The total number of crashes in 2005 was 219, yielding a crash rate of 31 per thousand people (total number of crashes 219 divided by total population 7,084 times 1,000). The corresponding rate for the state was 25 per thousand people.

## General Crash Information

Since 1996 the number of crashes has shown no consistent pattern. Fatal and injury crashes have also shown no consistent pattern since 1996. Belt usage (as a percentage) has decreased from last year, while belt usage in crashes involving visible and incapacitating injuries has also decreased. There were no fatalities in the seven intersections with the most crashes in 2005. Of these intersections, all seven involve Aztec Boulevard.

## Alcohol-related Crash Information

Information about alcohol-involved crashes is included in all sections of this report. Of the 70 people convicted of DWI in Aztec, 54 percent were first-time DWI convictions (number of first convictions 38 divided by the total number of people convicted 70 times 100). The corresponding percent for the state is 61.

## Crash Specifics

Crashes involving other vehicles were the most common class, accounting for 65 percent of all crashes. Pickups were the vehicle type most often involved in crashes, accounting for 38 percent of all vehicles in crashes. Passenger cars accounted for 35 percent of vehicles involved in crashes. Together these two vehicle types comprised 73 percent of the vehicles involved in injury crashes. The three most common top contributing factors were failing to yield, driver inattention, and following too close. There were no fatal crashes in 2005.

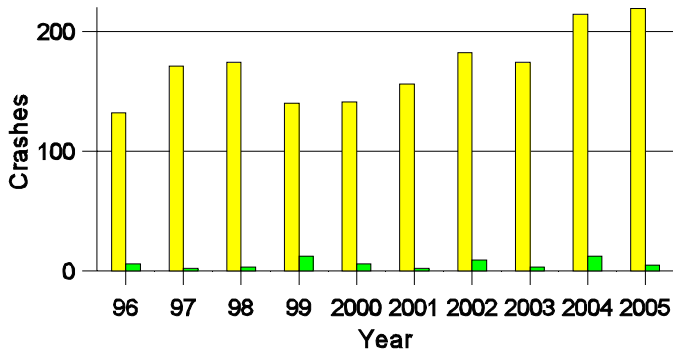
## People in Crashes

Overall, males were 56 percent of drivers in crashes, although they account for only 50 percent of licensed drivers in Aztec. Six pedestrians were involved in crashes this year. In 2005, no 'teenagers' or young adults were killed in crashes in Aztec. Statewide 17 percent of alcohol-involved drivers were under 21; in Aztec 20 percent (1 of 5) were under 21.

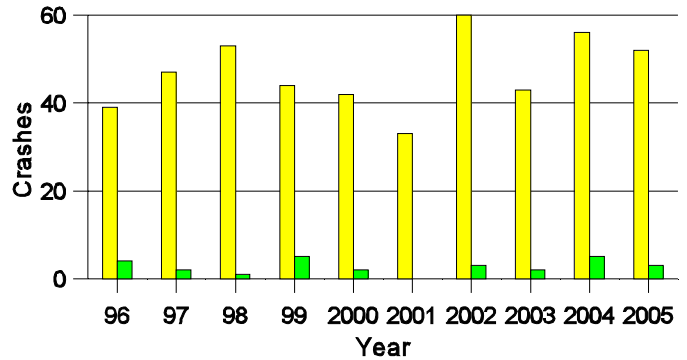
**Note:** The 1999 crash file contains 15% fewer crashes than the 1998 file. This may be due to problems implementing the new system after the old system failed, or to under reporting. Care should be used in interpreting differences between 1999 and other years in this report.

- Location of arrest/conviction was determined by police agency/court location, not driver residence.
- Crashes and drivers were counted by the city of occurrence/residence.
- Population was counted according to the Census definition.  
The city population data is from the most current 2005 estimates.
- Young adults are people between the ages of 20 and 24.
- 'Teenagers' are people between the ages of 15 and 19.
- Tables only include variable values for which there are data.

**Crashes in Aztec  
by Alcohol Involvement**



**Fatal and Injury Crashes in Aztec  
by Alcohol Involvement**



■ All Crashes  
■ Alcohol-involved Crashes

■ All Fatal and Injury Crashes  
■ Alcohol-involved Fatal and Injury Crashes

**Passenger Vehicle Seatbelt Usage and Injuries in Aztec, 2003-2005**

Injury Level	2005		2004		2003	
	Total	No Belt	Total	No Belt	Total	No Belt
Killed	0	0	0	0	0	0
Incapacitating injury	8	2	6	0	5	1
Visible injury	16	2	11	3	9	1
Complaint of injury	29	1	61	1	40	2
Unhurt	390	0	461	1	341	3
<b>Total</b>	<b>443</b>	<b>5</b>	<b>539</b>	<b>5</b>	<b>395</b>	<b>7</b>

**The Seven Intersections in Aztec with the Most Crashes, 2005**

Intersection	Crashes			People	
	Total	Fatal	Injury	Killed	Injured
Ash St @ Aztec Blvd	7	0	2	0	2
Aztec Blvd @ Chaco St	6	0	4	0	4
Aztec Blvd @ Church Ave	6	0	0	0	0
Aztec Blvd @ Light Plant Rd	14	0	3	0	7
Aztec Blvd @ Main Ave	13	0	3	0	4
Aztec Blvd @ Navajo Dam Rd	6	0	3	0	5
Aztec Blvd @ Simonds Rd	6	0	2	0	2

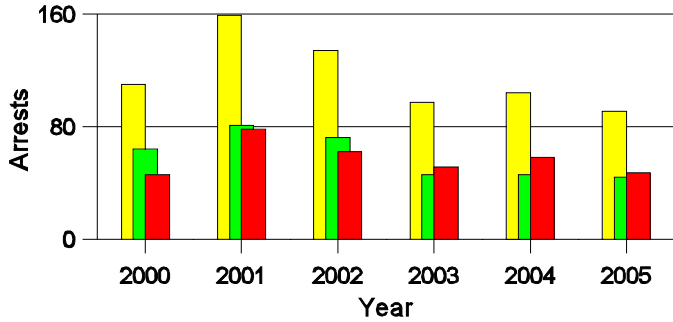
**Lifetime DWI Convictions for Drivers  
Convicted of DWI Violations in Aztec, 2005**

Convictions	Since 2000	Since 1981
1st	50	38
2nd	15	16
3rd	3	4
4th	2	4
5th	0	5
6th	0	1
7th	0	1
8th	0	1
9th	0	0
10 or more	0	0
<b>Total</b>	<b>70</b>	<b>70</b>

Convictions are counts of people convicted of DWI by 7/2006 for violations in 2005 in Aztec.  
Convictions are not comparable to arrests.

**DWI Arrests in Aztec**

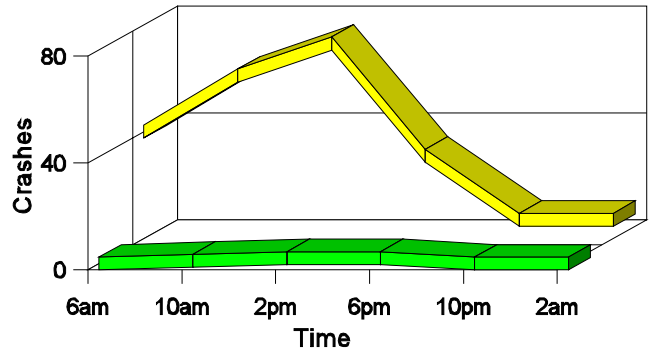
**Showing First Arrests and Repeat Offenders**



■ Total DWI Arrests  
■ First DWI Arrests  
■ Repeat DWI Arrests

**Crashes in Aztec**

**by Hour and Alcohol Involvement**



■ All Crashes  
■ Alcohol-involved Crashes

**Crashes in Aztec by Class, 2005**

Class	Crashes					People	
	Total	% of Total	Fatal	% of Fatal	Injury	Killed	Injured
Other vehicle	143	65	0	0	35	0	51
Pedestrian	6	3	0	0	6	0	6
Fixed object	23	11	0	0	4	0	6
Veh. on other roadway	1	0	0	0	0	0	0
Parked vehicle	24	11	0	0	2	0	2
Overturn	6	3	0	0	4	0	4
Other non-collision	4	2	0	0	0	0	0
Pedalcyclist	1	0	0	0	0	0	0
Animal	10	5	0	0	0	0	0
Other object	1	0	0	0	1	0	1
<b>Total</b>	<b>219</b>	<b>100</b>	<b>0</b>	<b>0</b>	<b>52</b>	<b>0</b>	<b>70</b>

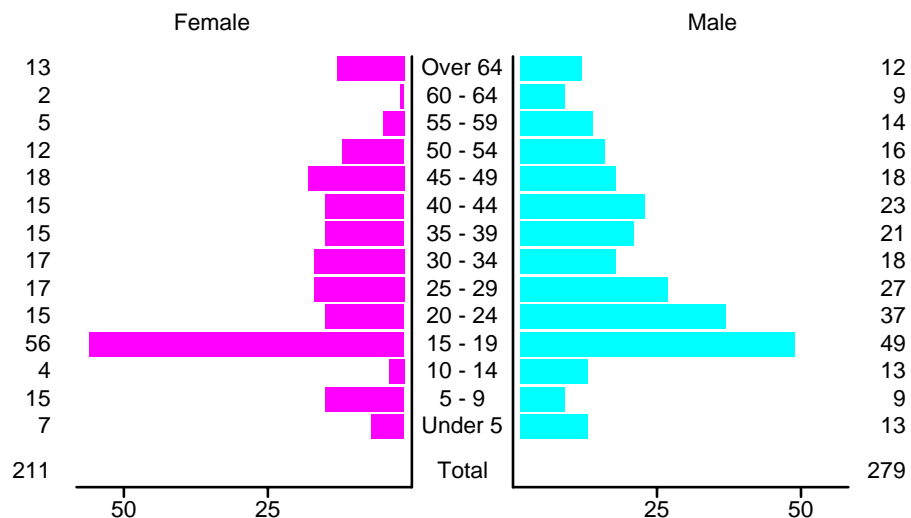
### Crashes in Aztec by Vehicle Type, 2005

Vehicle Type	Vehicles					People	
	Total	% of Total	Fatal	% of Fatal	Injury	Killed	Injured
Passenger car	139	35	0	0	35	0	29
Pickup	150	38	0	0	36	0	17
Semi	17	4	0	0	0	0	0
Bus	1	0	0	0	0	0	0
Motorcycle	5	1	0	0	3	0	4
Pedalcyclist	1	0	0	0	0	0	0
Pedestrian	6	2	0	0	6	0	6
Van/4 WD	65	16	0	0	17	0	14
Other	1	0	0	0	0	0	0
Unknown	15	4	0	0	0	0	0
<b>Total</b>	<b>400</b>	<b>100</b>	<b>0</b>	<b>0</b>	<b>97</b>	<b>0</b>	<b>70</b>

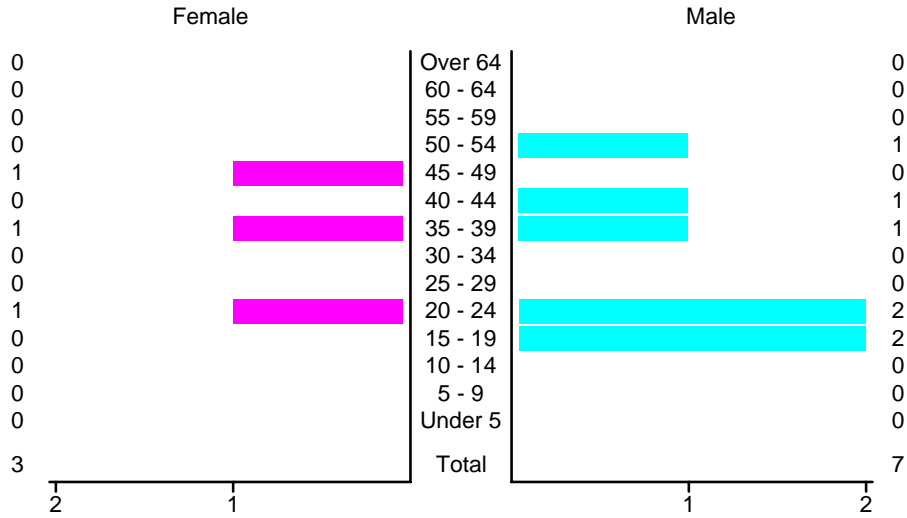
### Crashes in Aztec by Top Contributing Factor, 2005

Contributing Factor	Crashes					People	
	Total	% of Total	Fatal	% of Fatal	Injury	Killed	Injured
Alcohol involvement	5	2	0	0	3	0	3
Red light running	12	5	0	0	6	0	10
Failing to yield	48	22	0	0	13	0	17
Excessive speed	15	7	0	0	7	0	11
Driving left of center	4	2	0	0	1	0	2
Following too close	36	16	0	0	8	0	11
Improper turning	2	1	0	0	0	0	0
Improper overtaking	4	2	0	0	0	0	0
Improper backing	17	8	0	0	0	0	0
Inop. traffic control	1	0	0	0	0	0	0
Mechanical defect	5	2	0	0	0	0	0
Driver inattention	44	20	0	0	7	0	9
Other	26	12	0	0	7	0	7
<b>Total</b>	<b>219</b>	<b>100</b>	<b>0</b>	<b>0</b>	<b>52</b>	<b>0</b>	<b>70</b>

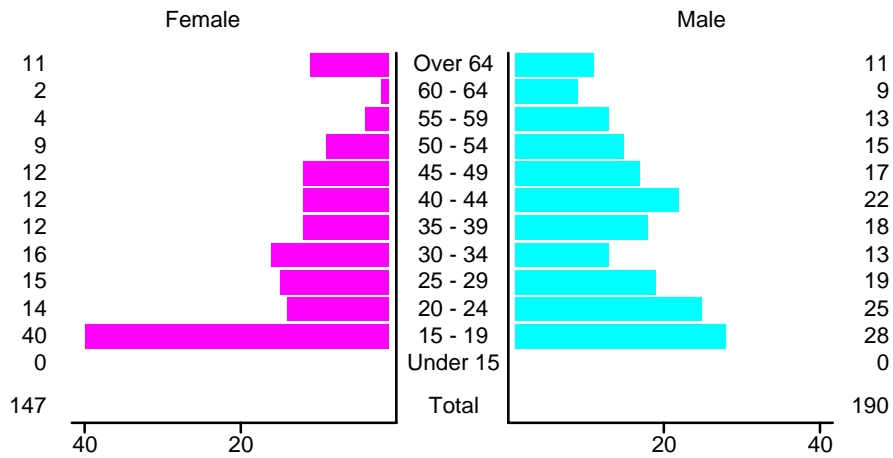
### People in Crashes by Age and Sex in Aztec, 2005



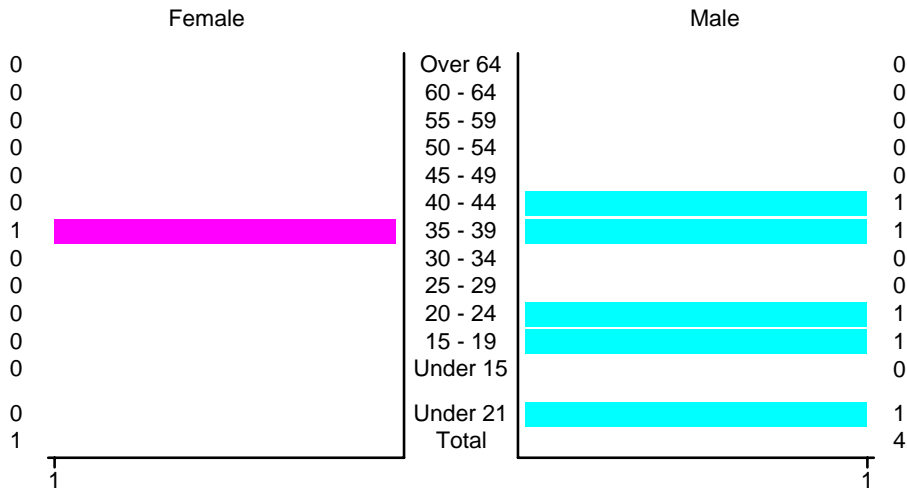
### People in Alcohol-Involved Crashes in Aztec, 2005 by Age and Sex



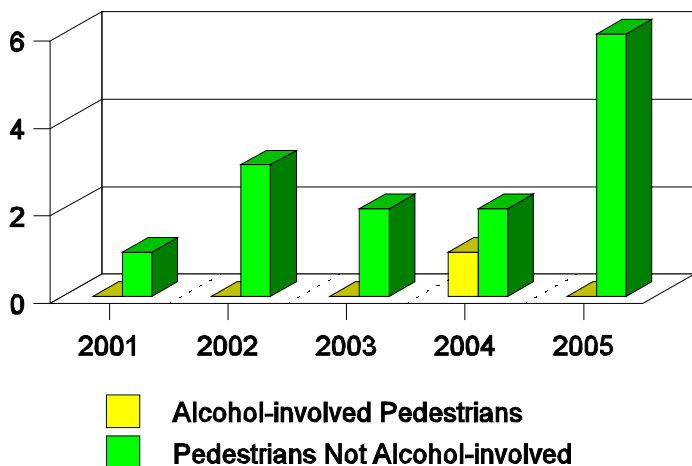
### Drivers in Crashes by Age and Sex in Aztec, 2005



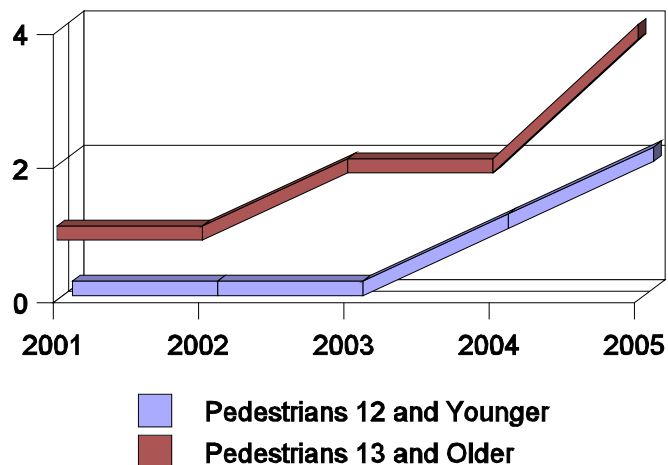
### Alcohol-Involved Drivers in Crashes in Aztec, 2005 by Age and Sex



**Pedestrian in Crashes in Aztec  
by Pedestrian Alcohol Involvement**



**Pedestrian in Crashes in Aztec  
by Age Group**



**'Teenagers' and Young Adults in Crashes in Aztec by Vehicle Type, 2005**

Vehicle	'Teenage' Drivers			Young Adult Drivers		
	Total	Fatal	Injury	Total	Fatal	Injury
Passenger car	33	0	8	15	0	4
Pickup	24	0	5	16	0	6
Semi	0	0	0	3	0	0
Motorcycle	1	0	0	0	0	0
Van/4 WD	10	0	2	5	0	2
<b>Total</b>	<b>68</b>	<b>0</b>	<b>15</b>	<b>39</b>	<b>0</b>	<b>12</b>

**'Teenagers' and Young Adults Killed and Injured in Crashes by Year in Aztec, 1996-2005**

Year	'Teenagers'				Young Adults			
	All Crashes		Alcohol Crashes		All Crashes		Alcohol Crashes	
	Killed	Injured	Killed	Injured	Killed	Injured	Killed	Injured
2005	0	8	0	0	0	6	0	1
2004	0	19	0	1	0	6	0	1
2003	0	13	0	3	0	5	0	1
2002	0	20	0	2	0	8	0	0
2001	0	6	0	0	0	3	0	0
2000	0	17	0	1	0	9	0	0
1999	0	12	0	1	0	3	0	1
1998	0	26	0	0	0	9	0	1
1997	0	8	0	1	0	5	0	0
1996	0	17	0	4	0	4	0	0