

# Bloomfield Community Report, 2005

## Demographics

In 2005, there were 9,597 licensed drivers in Bloomfield. Of these, there were 4,848 females and 4,749 males. The population of Bloomfield was 7,442. The total number of crashes in 2005 was 172, yielding a crash rate of 23 per thousand people (total number of crashes 172 divided by total population 7,442 times 1,000). The corresponding rate for the state was 25 per thousand people.

## General Crash Information

Since 1996 the number of crashes has shown no consistent pattern. Fatal and injury crashes have also shown no consistent pattern since 1996. Belt usage (as a percentage) has decreased from last year, while belt usage in crashes involving visible and incapacitating injuries has also decreased. There were no fatalities in the seven intersections with the most crashes in 2005. Of these intersections, Broadway was involved five times.

## Alcohol-related Crash Information

Information about alcohol-involved crashes is included in all sections of this report. Of the 28 people convicted of DWI in Bloomfield, 32 percent were first-time DWI convictions (number of first convictions nine divided by the total number of people convicted 28 times 100). The corresponding percent for the state is 61.

## Crash Specifics

Crashes involving other vehicles were the most common class, accounting for 70 percent of all crashes. Crashes involving an other vehicle and a pedestrian resulted in fatalities. Passenger cars were the vehicle type most often involved in crashes, accounting for 38 percent of all vehicles in crashes. Pickups accounted for 34 percent of vehicles involved in crashes. Together these two vehicle types comprised 71 percent of the vehicles involved in injury crashes. The three most common top contributing factors were driver inattention, failing to yield, and following too close. There were two fatal crashes in 2005. The top contributing factor for both fatal crashes was alcohol involvement.

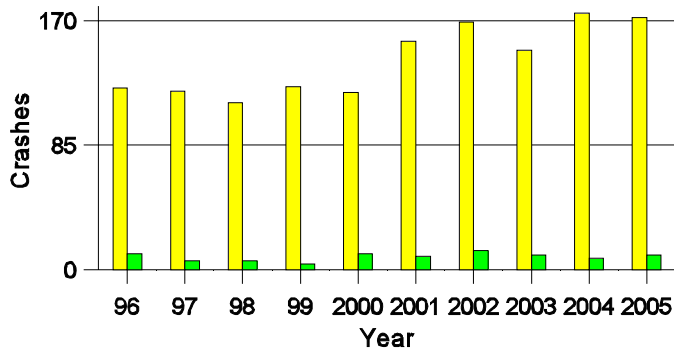
## People in Crashes

Overall, males were 59 percent of drivers in crashes, although they account for only 49 percent of licensed drivers in Bloomfield. Four pedestrians were involved in crashes in 2005. In 2005, no 'teenagers' or young adults were killed. Statewide 17 percent of alcohol-involved drivers were under 21; in Bloomfield 38 percent (3 out of 8) were under 21.

**Note:** The 1999 crash file contains 15% fewer crashes than the 1998 file. This may be due to problems implementing the new system after the old system failed, or to under reporting. Care should be used in interpreting differences between 1999 and other years in this report.

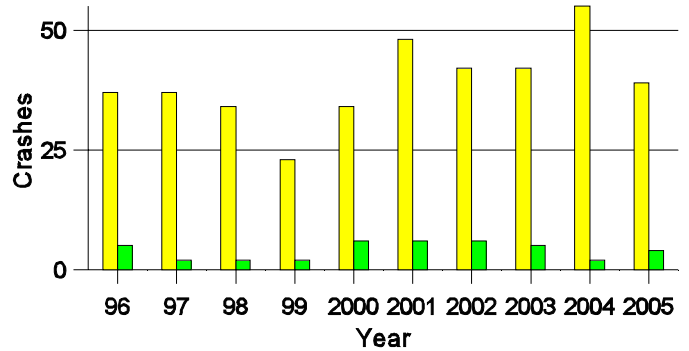
- Location of arrest/conviction was determined by police agency/court location, not driver residence.
- Crashes and drivers were counted by the city of occurrence/residence.
- Population was counted according to the Census definition.  
The city population data is from the most current 2005 estimates.
- Young adults are people between the ages of 20 and 24.
- 'Teenagers' are people between the ages of 15 and 19.
- Tables only include variable values for which there are data.

### Crashes in Bloomfield by Alcohol Involvement



■ All Crashes  
■ Alcohol-involved Crashes

### Fatal and Injury Crashes in Bloomfield by Alcohol Involvement



■ All Fatal and Injury Crashes  
■ Alcohol-involved Fatal and Injury Crashes

### Passenger Vehicle Seatbelt Usage and Injuries in Bloomfield, 2003-2005

| Injury Level          | 2005       |          | 2004       |          | 2003       |           |
|-----------------------|------------|----------|------------|----------|------------|-----------|
|                       | Total      | No Belt  | Total      | No Belt  | Total      | No Belt   |
| Killed                | 1          | 0        | 0          | 0        | 3          | 3         |
| Incapacitating injury | 2          | 1        | 7          | 0        | 7          | 2         |
| Visible injury        | 16         | 1        | 18         | 0        | 14         | 0         |
| Complaint of injury   | 24         | 0        | 35         | 0        | 29         | 4         |
| Unhurt                | 317        | 4        | 317        | 1        | 286        | 4         |
| <b>Total</b>          | <b>360</b> | <b>6</b> | <b>377</b> | <b>1</b> | <b>339</b> | <b>13</b> |

### The Seven Intersections in Bloomfield with the Most Crashes, 2005

| Intersection                | Crashes |       |        | People |         |
|-----------------------------|---------|-------|--------|--------|---------|
|                             | Total   | Fatal | Injury | Killed | Injured |
| 1st St @ Blanco Blvd        | 12      | 0     | 2      | 0      | 3       |
| 1st St @ Broadway           | 20      | 0     | 3      | 0      | 3       |
| 3rd St @ Broadway           | 5       | 0     | 2      | 0      | 2       |
| 4th St @ Broadway           | 5       | 0     | 0      | 0      | 0       |
| 5th St @ Broadway           | 6       | 0     | 1      | 0      | 1       |
| Bloomfield Blvd @ Broadway  | 11      | 0     | 1      | 0      | 1       |
| Bloomfield Blvd @ Magnum Rd | 4       | 0     | 2      | 0      | 3       |

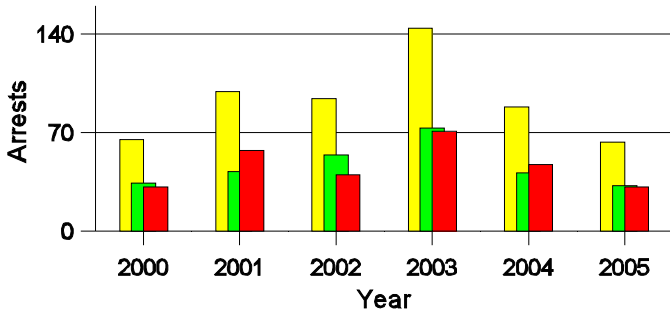
**Lifetime DWI Convictions for Drivers  
Convicted of DWI Violations in Bloomfield, 2005**

| Convictions  | Since 2000 | Since 1981 |
|--------------|------------|------------|
| 1st          | 15         | 9          |
| 2nd          | 5          | 5          |
| 3rd          | 7          | 8          |
| 4th          | 1          | 3          |
| 5th          | 0          | 0          |
| 6th          | 0          | 2          |
| 7th          | 0          | 1          |
| 8th          | 0          | 0          |
| 9th          | 0          | 0          |
| 10 or more   | 0          | 0          |
| <b>Total</b> | <b>28</b>  | <b>28</b>  |

Convictions are counts of people convicted of DWI by 7/2006 for violations in 2005 in Bloomfield.  
Convictions are not comparable to arrests.

**DWI Arrests in Bloomfield**

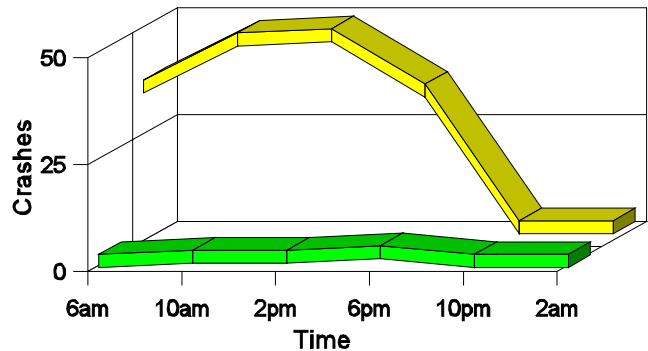
Showing First Arrests and Repeat Offenders



■ Total DWI Arrests  
■ First DWI Arrests  
■ Repeat DWI Arrests

**Crashes in Bloomfield**

by Hour and Alcohol Involvement



■ All Crashes  
■ Alcohol-involved Crashes

**Crashes in Bloomfield by Class, 2005**

| Class          | Crashes    |            |          |            | People    |          |           |
|----------------|------------|------------|----------|------------|-----------|----------|-----------|
|                | Total      | % of Total | Fatal    | % of Fatal | Injury    | Killed   | Injured   |
| Other vehicle  | 120        | 70         | 1        | 50         | 30        | 1        | 47        |
| Pedestrian     | 4          | 2          | 1        | 50         | 3         | 1        | 3         |
| Fixed object   | 22         | 13         | 0        | 0          | 2         | 0        | 2         |
| Parked vehicle | 14         | 8          | 0        | 0          | 1         | 0        | 1         |
| Overturn       | 2          | 1          | 0        | 0          | 0         | 0        | 0         |
| Pedalcyclist   | 1          | 1          | 0        | 0          | 1         | 0        | 1         |
| Animal         | 8          | 5          | 0        | 0          | 0         | 0        | 0         |
| Other object   | 1          | 1          | 0        | 0          | 0         | 0        | 0         |
| <b>Total</b>   | <b>172</b> | <b>100</b> | <b>2</b> | <b>100</b> | <b>37</b> | <b>2</b> | <b>54</b> |

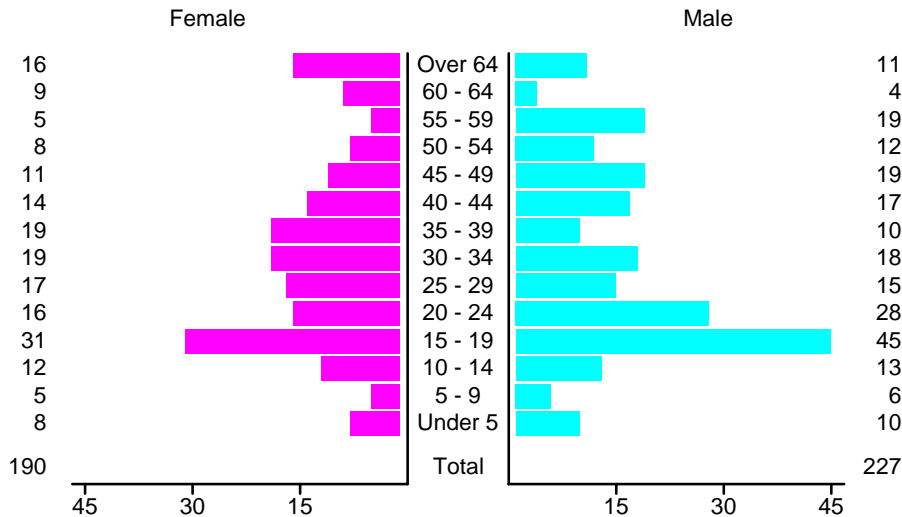
### Crashes in Bloomfield by Vehicle Type, 2005

| Vehicle Type  | Vehicles   |            |          |            |           | People   |           |
|---------------|------------|------------|----------|------------|-----------|----------|-----------|
|               | Total      | % of Total | Fatal    | % of Fatal | Injury    | Killed   | Injured   |
| Passenger car | 121        | 38         | 1        | 17         | 34        | 1        | 21        |
| Pickup        | 108        | 34         | 4        | 67         | 19        | 0        | 15        |
| Semi          | 21         | 7          | 0        | 0          | 4         | 0        | 0         |
| Motorcycle    | 5          | 2          | 0        | 0          | 4         | 0        | 5         |
| Pedalcyclist  | 1          | 0          | 0        | 0          | 1         | 0        | 1         |
| Pedestrian    | 4          | 1          | 1        | 17         | 3         | 1        | 3         |
| Van/4 WD      | 34         | 11         | 0        | 0          | 6         | 0        | 7         |
| Other         | 4          | 1          | 0        | 0          | 0         | 0        | 0         |
| Unknown       | 24         | 7          | 0        | 0          | 4         | 0        | 2         |
| <b>Total</b>  | <b>322</b> | <b>100</b> | <b>6</b> | <b>100</b> | <b>75</b> | <b>2</b> | <b>54</b> |

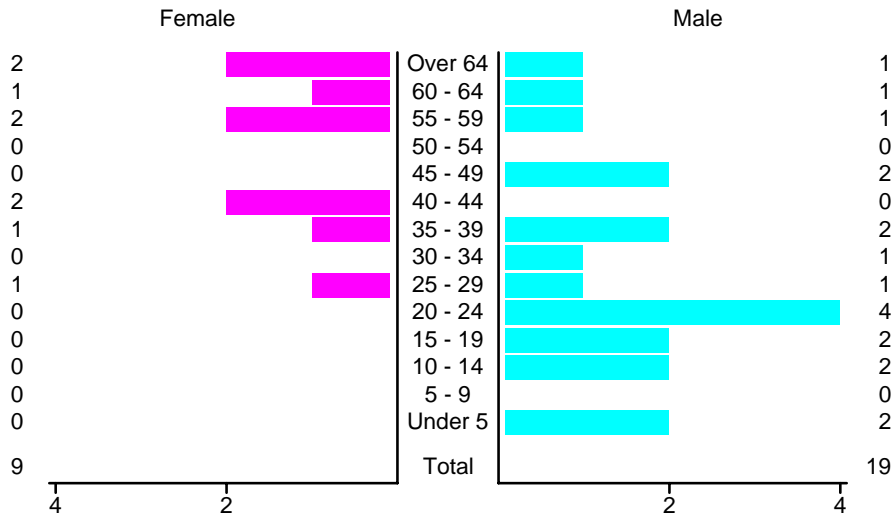
### Crashes in Bloomfield by Top Contributing Factor, 2005

| Contributing Factor    | Crashes    |            |          |            |           | People   |           |
|------------------------|------------|------------|----------|------------|-----------|----------|-----------|
|                        | Total      | % of Total | Fatal    | % of Fatal | Injury    | Killed   | Injured   |
| Alcohol involvement    | 10         | 6          | 2        | 100        | 2         | 2        | 4         |
| Red light running      | 10         | 6          | 0        | 0          | 2         | 0        | 3         |
| Failing to yield       | 28         | 16         | 0        | 0          | 11        | 0        | 13        |
| Excessive speed        | 20         | 12         | 0        | 0          | 8         | 0        | 15        |
| Driving left of center | 4          | 2          | 0        | 0          | 2         | 0        | 2         |
| Following too close    | 25         | 15         | 0        | 0          | 4         | 0        | 7         |
| Improper turning       | 11         | 6          | 0        | 0          | 0         | 0        | 0         |
| Improper backing       | 6          | 3          | 0        | 0          | 0         | 0        | 0         |
| Inop. traffic control  | 2          | 1          | 0        | 0          | 0         | 0        | 0         |
| Mechanical defect      | 3          | 2          | 0        | 0          | 0         | 0        | 0         |
| Driver inattention     | 34         | 20         | 0        | 0          | 7         | 0        | 9         |
| Other                  | 19         | 11         | 0        | 0          | 1         | 0        | 1         |
| <b>Total</b>           | <b>172</b> | <b>100</b> | <b>2</b> | <b>100</b> | <b>37</b> | <b>2</b> | <b>54</b> |

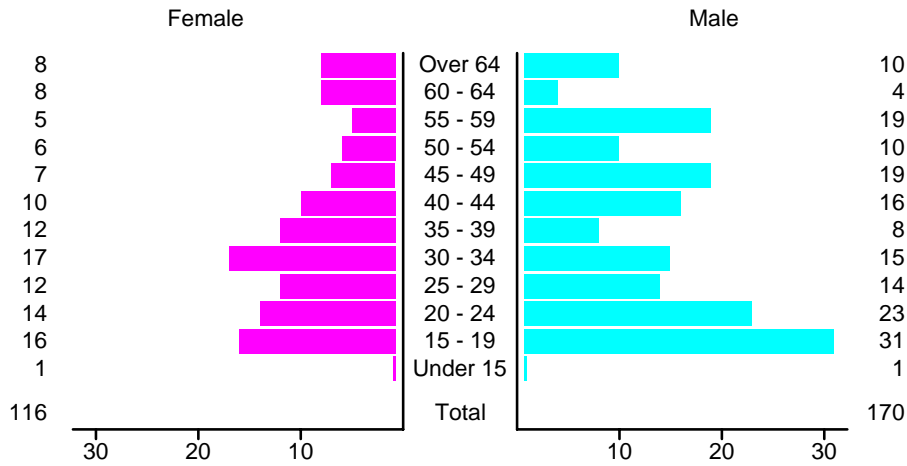
### People in Crashes by Age and Sex in Bloomfield, 2005



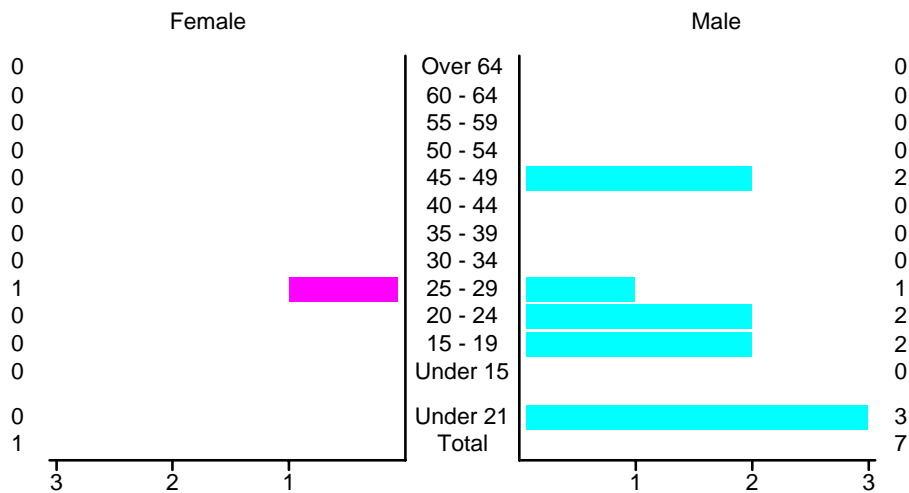
### People in Alcohol-Involved Crashes in Bloomfield, 2005 by Age and Sex



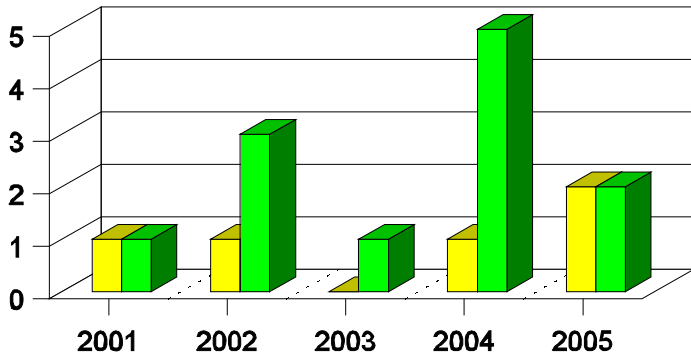
### Drivers in Crashes by Age and Sex in Bloomfield, 2005



### Alcohol-Involved Drivers in Crashes in Bloomfield, 2005 by Age and Sex

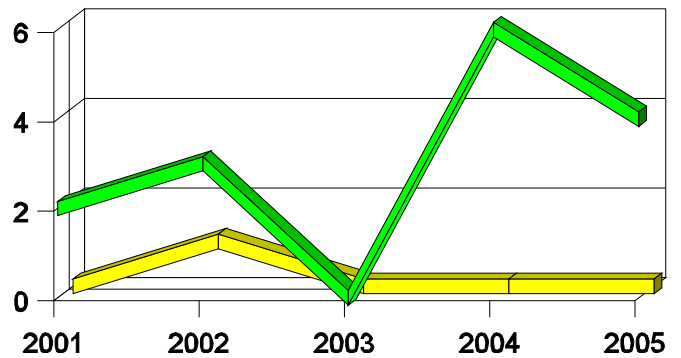


**Pedestrian in Crashes in Bloomfield  
by Pedestrian Alcohol Involvement**



■ Alcohol-involved Pedestrians  
■ Pedestrians Not Alcohol-involved

**Pedestrian in Crashes in Bloomfield  
by Age Group**



■ Pedestrians 12 and Younger  
■ Pedestrians 13 and Older

**'Teenagers' and Young Adults in Crashes in Bloomfield by Vehicle Type, 2005**

| Vehicle       | 'Teenage' Drivers |          |           | Young Adult Drivers |          |           |
|---------------|-------------------|----------|-----------|---------------------|----------|-----------|
|               | Total             | Fatal    | Injury    | Total               | Fatal    | Injury    |
| Passenger car | 31                | 0        | 11        | 24                  | 0        | 10        |
| Pickup        | 10                | 0        | 3         | 7                   | 0        | 3         |
| Semi          | 0                 | 0        | 0         | 2                   | 0        | 1         |
| Motorcycle    | 0                 | 0        | 0         | 1                   | 0        | 1         |
| Pedalcyclist  | 1                 | 0        | 1         | 0                   | 0        | 0         |
| Pedestrian    | 1                 | 0        | 1         | 0                   | 0        | 0         |
| Van/4 WD      | 6                 | 0        | 0         | 3                   | 0        | 0         |
| <b>Total</b>  | <b>49</b>         | <b>0</b> | <b>16</b> | <b>37</b>           | <b>0</b> | <b>15</b> |

**'Teenagers' and Young Adults Killed and Injured in Crashes by Year in Bloomfield, 1996-2005**

| Year | 'Teenagers' |         |                 |         | Young Adults |         |                 |         |
|------|-------------|---------|-----------------|---------|--------------|---------|-----------------|---------|
|      | All Crashes |         | Alcohol Crashes |         | All Crashes  |         | Alcohol Crashes |         |
|      | Killed      | Injured | Killed          | Injured | Killed       | Injured | Killed          | Injured |
| 2005 | 0           | 12      | 0               | 1       | 0            | 7       | 0               | 0       |
| 2004 | 0           | 9       | 0               | 1       | 0            | 4       | 0               | 0       |
| 2003 | 0           | 10      | 0               | 1       | 0            | 1       | 0               | 0       |
| 2002 | 0           | 21      | 0               | 4       | 0            | 8       | 0               | 1       |
| 2001 | 1           | 16      | 1               | 2       | 0            | 7       | 0               | 0       |
| 2000 | 0           | 15      | 0               | 4       | 0            | 7       | 0               | 1       |
| 1999 | 0           | 6       | 0               | 0       | 0            | 3       | 0               | 0       |
| 1998 | 0           | 10      | 0               | 1       | 0            | 5       | 0               | 0       |
| 1997 | 0           | 19      | 0               | 0       | 0            | 7       | 0               | 1       |
| 1996 | 0           | 18      | 0               | 0       | 0            | 2       | 0               | 1       |