

Catron County Report, 2005

Demographics

In 2005, there were 3,230 licensed drivers in Catron County. Of these, there were 1,423 females and 1,807 males. The population in Catron County was 3,409. The total number of crashes in 2005 was 83, yielding a crash rate of 24 per thousand people (the total number of crashes 83 divided by the population 3,409 multiplied by 1,000). The corresponding rate for the state was 25 per thousand people.

General Crash Information

Since 1996 the number of crashes has shown no consistent pattern. Fatal and injury crashes have also shown no consistent pattern since 1996. Belt usage (as a percentage) has increased from last year, while belt usage in crashes involving visible and incapacitating injuries has also increased.

Alcohol-related Crash Information

Information about alcohol-involved crashes is included in all sections of this report. Of the 27 people convicted of DWI in Catron County in 2005, 52 percent were first-time DWI convictions (number of first convictions 14 divided by the total number of people convicted 27 multiplied by 100). The corresponding percentage for the state was 61.

Crash Specifics

Crashes involving animals were the most common class, accounting for 58 percent of all crashes. Crashes involving an other vehicle and an animal resulted in fatalities. Pickups were the vehicle type most often involved in crashes, accounting for 44 percent of all vehicles in crashes. Passenger cars accounted for 22 percent of vehicles involved in crashes. Together these two vehicle types comprised 58 percent of the vehicles involved in injury crashes. The two most common top contributing factors were 'other' and excessive speed. There were two fatal crashes in 2005. The top contributing factors for the fatal crashes were driver inattention and 'other.'

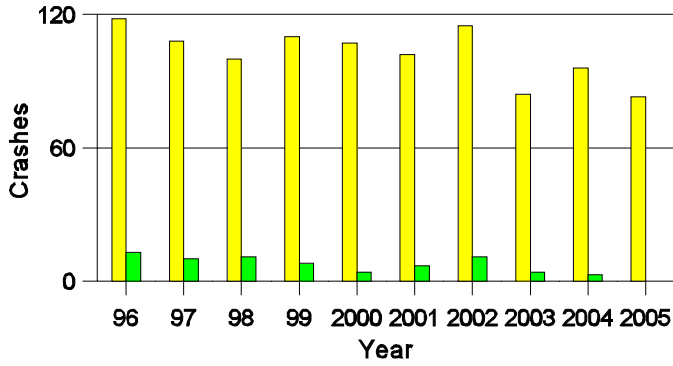
People in Crashes

Overall, males were 73 percent of drivers in crashes, although they account for only 56 percent of licensed drivers in Catron County. There were no pedestrians involved in crashes. In 2005, no 'teenagers' and one young adult were killed in crashes in Catron County. Statewide 17 percent of alcohol-involved drivers were under 21; in Catron County no drivers were alcohol involved.

Note: The 1999 crash file contains 15% fewer crashes than the 1998 file. This may be due to problems implementing the new system after the old system failed, or to under reporting. Care should be used in interpreting differences between 1999 and other years in this report.

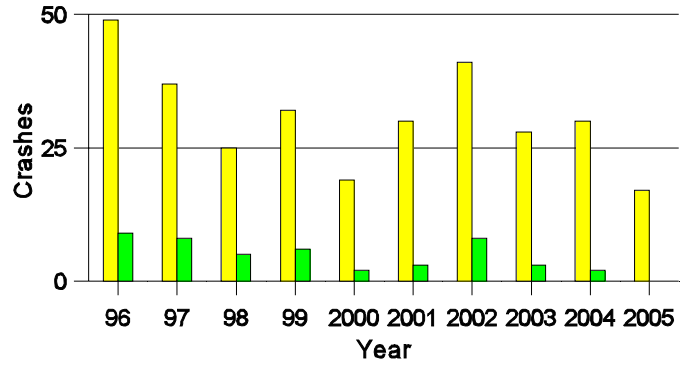
- Location of arrest/conviction was determined by police agency/court location, not driver residence.
- Crashes and drivers were counted by the city of occurrence/residence.
- Population was counted according to the Census definition, using 2005 estimates.
- Young adults are people between the ages of 20 and 24.
- 'Teenagers' are people between the ages of 15 and 19.
- Tables only include variable values for which there are data.

Crashes in Catron County by Alcohol Involvement



■ All Crashes
■ Alcohol-involved Crashes

Fatal and Injury Crashes in Catron County by Alcohol Involvement



■ All Fatal and Injury Crashes
■ Alcohol-involved Fatal and Injury Crashes

Passenger Vehicle Seatbelt Usage and Injuries in Catron County, 2003-2005

Injury Level	2005		2004		2003	
	Total	No Belt	Total	No Belt	Total	No Belt
Killed	0	0	1	1	3	3
Incapacitating injury	1	0	7	2	10	4
Visible injury	6	0	22	1	13	3
Complaint of injury	4	0	19	2	15	2
Unhurt	113	1	132	0	105	2
Total	124	1	181	6	146	14

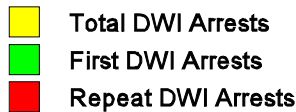
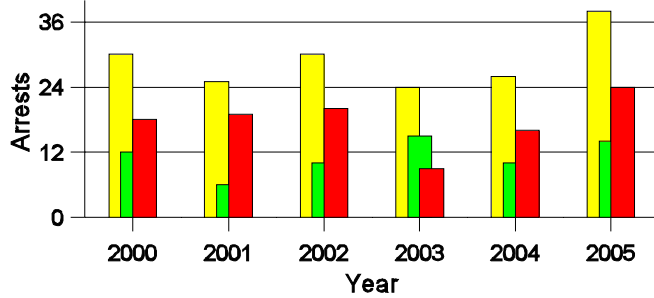
Lifetime DWI Convictions for Drivers Convicted of DWI Violations in Catron County, 2005

Convictions	Since 2000	Since 1981
1st	21	14
2nd	4	5
3rd	1	6
4th	1	2
5th	0	0
6th	0	0
7th	0	0
8th	0	0
9th	0	0
10 or more	0	0
Total	27	27

Convictions are counts of people convicted of DWI by 7/2006 for violations in 2005 in Catron County. Convictions are not comparable to arrests.

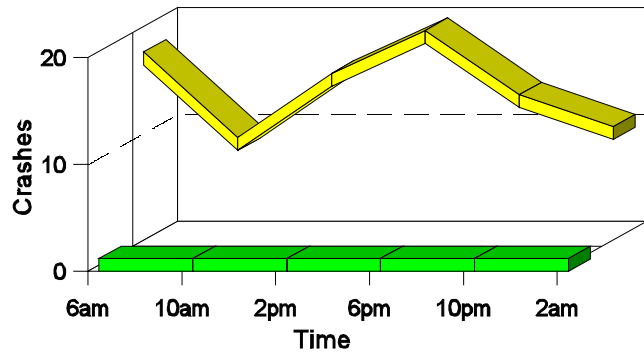
DWI Arrests in Catron County

Showing First Arrests and Repeat Offenders



Crashes in Catron County

by Hour and Alcohol Involvement



Crashes in Catron County by Class, 2005

Class	Crashes					People	
	Total	% of Total	Fatal	% of Fatal	Injury	Killed	Injured
Other vehicle	9	11	1	50	3	1	4
Fixed object	6	7	0	0	1	0	2
Parked vehicle	1	1	0	0	1	0	1
Overturn	13	16	0	0	4	0	5
Other non-collision	5	6	0	0	1	0	1
Animal	48	58	1	50	5	1	6
Other object	1	1	0	0	0	0	0
Total	83	100	2	100	15	2	19

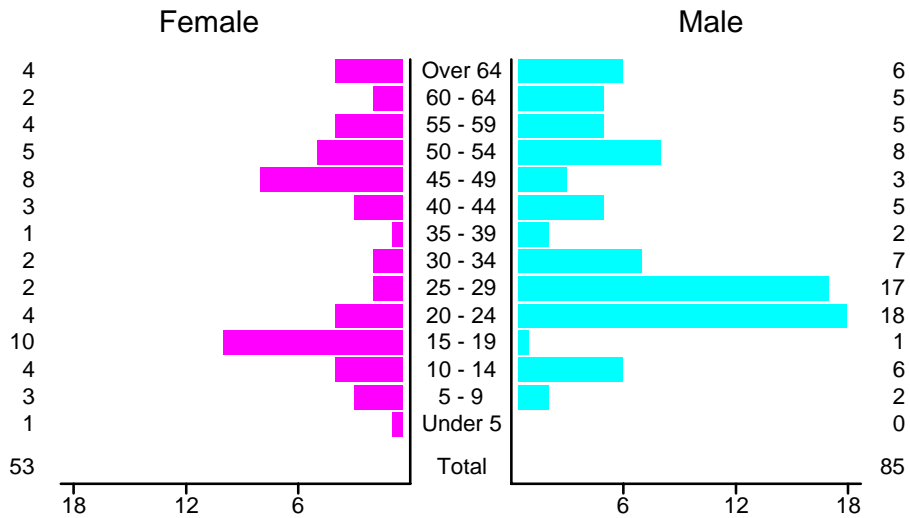
Crashes in Catron County by Vehicle Type, 2005

Vehicle Type	Vehicles					People	
	Total	% of Total	Fatal	% of Fatal	Injury	Killed	Injured
Passenger car	21	22	0	0	4	0	5
Pickup	42	44	0	0	7	0	6
Semi	4	4	1	33	2	0	0
Motorcycle	7	7	1	33	5	1	6
Van/4 WD	18	19	1	33	1	1	2
Other	3	3	0	0	0	0	0
Total	95	100	3	100	19	2	19

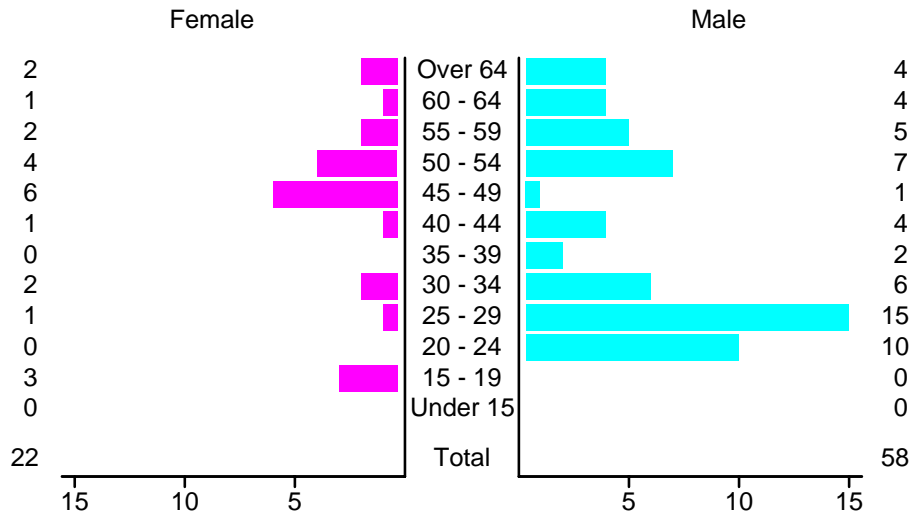
Crashes in Catron County by Top Contributing Factor, 2005

Contributing Factor	Crashes				People		
	Total	% of Total	Fatal	% of Fatal	Injury	Killed	Injured
Alcohol involvement	1	1	0	0	0	0	0
Red light running	2	2	0	0	2	0	3
Failing to yield	1	1	0	0	0	0	0
Excessive speed	14	17	0	0	1	0	1
Driving left of center	4	5	0	0	3	0	3
Following too close	1	1	0	0	0	0	0
Mechanical defect	4	5	0	0	1	0	2
Driver inattention	9	11	1	50	2	1	3
Other	47	57	1	50	6	1	7
Total	83	100	2	100	15	2	19

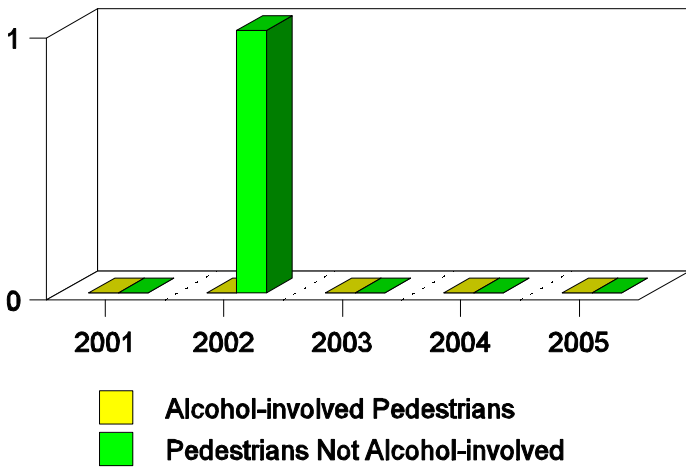
People in Crashes by Age and Sex in Catron County, 2005



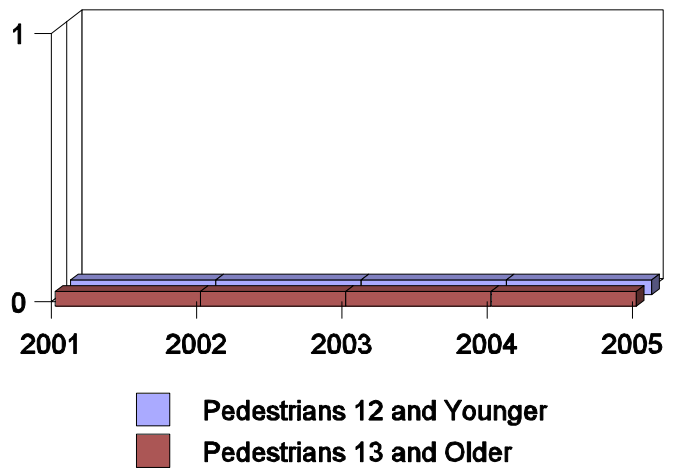
Drivers in Crashes by Age and Sex in Catron County, 2005



Pedestrians in Crashes in Catron County by Pedestrian Alcohol Involvement



Pedestrians in Crashes in Catron County by Age Group



'Teenagers' and Young Adults in Crashes in Catron County by Vehicle Type, 2005

Vehicle	'Teenage' Drivers			Young Adult Drivers		
	Total	Fatal	Injury	Total	Fatal	Injury
Passenger car	2	0	1	3	0	0
Pickup	1	0	1	3	0	1
Motorcycle	0	0	0	2	1	1
Van/4 WD	0	0	0	2	0	0
Total	3	0	2	10	1	2

'Teenagers' and Young Adults in Crashes in Catron County, 1996-2005

Year	'Teenagers'				Young Adults			
	All Crashes		Alcohol Crashes		All Crashes		Alcohol Crashes	
	Killed	Injured	Killed	Injured	Killed	Injured	Killed	Injured
2005	0	2	0	0	1	3	0	0
2004	0	8	0	2	0	6	0	0
2003	2	7	2	0	0	6	0	2
2002	1	3	1	0	0	4	0	1
2001	1	9	1	0	0	1	0	0
2000	0	0	0	0	2	3	2	0
1999	0	3	0	1	0	4	0	1
1998	1	4	1	2	0	1	0	0
1997	0	17	0	0	0	5	0	0
1996	0	13	0	3	0	13	0	1