

# Cibola County Report, 2005

## Demographics

In 2005, there were 16,171 licensed drivers in Cibola County. Of these, there were 8,357 females and 7,814 males. The population in Cibola County was 27,620. The total number of crashes in 2005 was 494, yielding a crash rate of 18 per thousand people (the total number of crashes 494 divided by the population 27,620 multiplied by 1,000). The corresponding rate for the state was 25 per thousand people.

## General Crash Information

Since 1996 the number of crashes has shown no consistent pattern. Fatal and injury crashes have also shown no consistent pattern since 1996. Belt usage (as a percentage) has decreased from last year, while belt usage in crashes involving visible and incapacitating injuries has also decreased from last year.

## Alcohol-related Crash Information

Information about alcohol-involved crashes is included in all sections of this report. Of the 218 people convicted of DWI in Cibola County in 2005, 55 percent were first-time DWI convictions (number of first convictions 119 divided by the total number of people convicted 218 multiplied by 100). The corresponding percentage for the state was 61.

## Crash Specifics

Crashes involving other vehicles were the most common class, accounting for 47 percent of all crashes. Crashes involving overturns and other vehicles were the most common crash classes which resulted in fatalities. Passenger cars were the vehicle type most often involved in crashes, accounting for 37 percent of all vehicles in crashes. Pickups accounted for 28 percent of vehicles involved in crashes. Together these two vehicle types comprised 62 percent of the vehicles involved in injury crashes. The two most common top contributing factors were driver inattention and excessive speed. There were 16 fatal crashes in 2005. The most common top contributing factor for the fatal crashes was alcohol involvement.

## People in Crashes

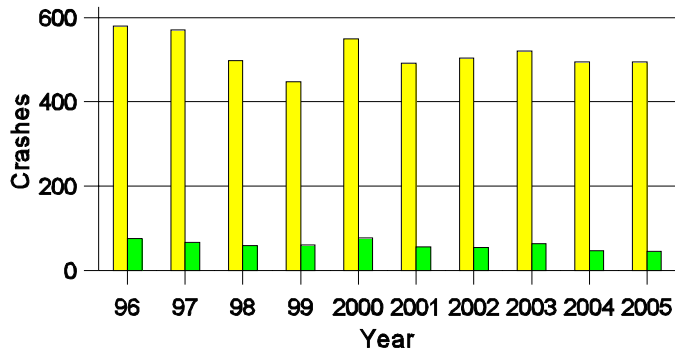
Overall, males were 62 percent of drivers in crashes, although they account for only 48 percent of licensed drivers in Cibola County. There were five pedestrians involved in crashes in 2005. In 2005, no 'teenagers' and two young adults were killed in crashes in Cibola County. Statewide 17 percent of alcohol-involved drivers were under 21; in Cibola County seven percent were under 21.

**Note:** The 1999 crash file contains 15% fewer crashes than the 1998 file. This may be due to problems implementing the new system after the old system failed, or to under reporting. Care should be used in interpreting differences between 1999 and other years in this report.

- Location of arrest/conviction was determined by police agency/court location, not driver residence.
- Crashes and drivers were counted by the city of occurrence/residence.
- Population was counted according to the Census definition, using 2005 estimates.
- Young adults are people between the ages of 20 and 24.
- 'Teenagers' are people between the ages of 15 and 19.
- Tables only include variable values for which there are data.

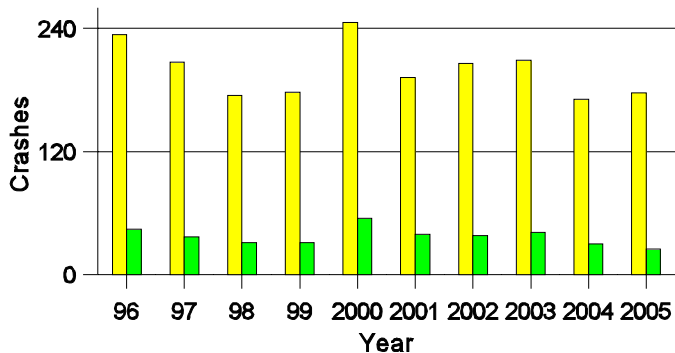
### Crashes in Cibola County

#### by Alcohol Involvement



### Fatal and Injury Crashes in Cibola County

#### by Alcohol Involvement



### Passenger Vehicle Seatbelt Usage and Injuries in Cibola County, 2003-2005

Injury Level	2005		2004		2003	
	Total	No Belt	Total	No Belt	Total	No Belt
Killed	13	8	9	5	11	8
Incapacitating injury	30	8	42	5	47	17
Visible injury	71	12	63	10	90	18
Complaint of injury	121	9	126	6	138	8
Unhurt	689	15	804	9	770	23
<b>Total</b>	<b>924</b>	<b>52</b>	<b>1,044</b>	<b>35</b>	<b>1,056</b>	<b>74</b>

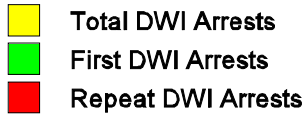
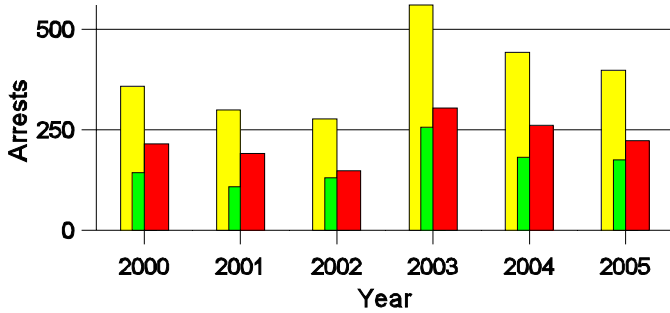
### Lifetime DWI Convictions for Drivers Convicted of DWI Violations in Cibola County, 2005

Convictions	Since 2000	Since 1981
1st	163	119
2nd	45	67
3rd	9	24
4th	1	5
5th	0	3
6th	0	0
7th	0	0
8th	0	0
9th	0	0
10 or more	0	0
<b>Total</b>	<b>218</b>	<b>218</b>

Convictions are counts of people convicted of DWI by 7/2006 for violations in 2005 in Cibola County. Convictions are not comparable to arrests.

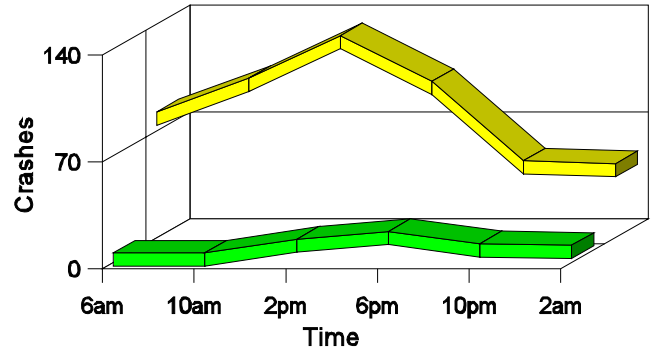
### DWI Arrests in Cibola County

Showing First Arrests and Repeat Offenders



### Crashes in Cibola County

by Hour and Alcohol Involvement



### Crashes in Cibola County by Class, 2005

Class	Crashes					People	
	Total	% of Total	Fatal	% of Fatal	Injury	Killed	Injured
Other vehicle	233	47	3	19	85	8	148
Pedestrian	5	1	1	6	4	1	4
Fixed object	87	18	1	6	23	1	38
Parked vehicle	34	7	0	0	5	0	8
Overturn	80	16	11	69	41	11	68
Other non-collision	22	4	0	0	1	0	1
Pedalcyclist	1	0	0	0	1	0	4
Animal	22	4	0	0	0	0	0
Other object	10	2	0	0	1	0	2
<b>Total</b>	<b>494</b>	<b>100</b>	<b>16</b>	<b>100</b>	<b>161</b>	<b>21</b>	<b>273</b>

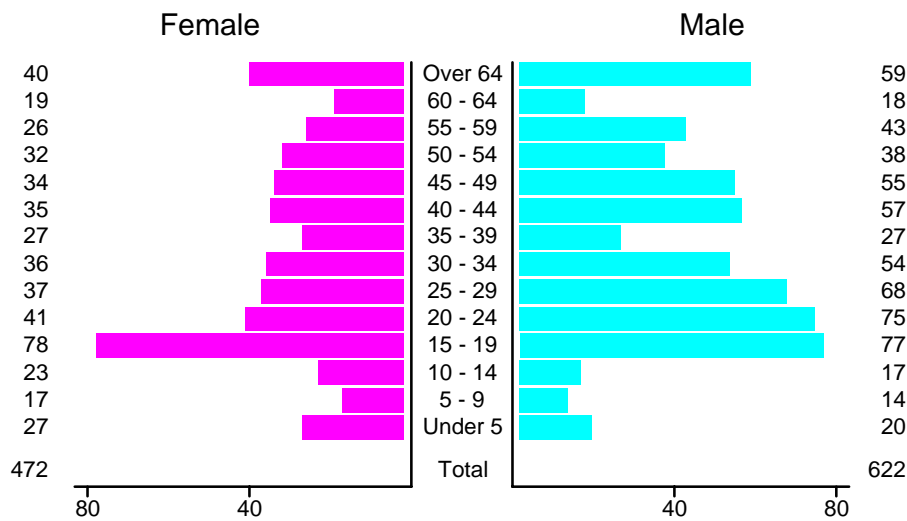
### Crashes in Cibola County by Vehicle Type, 2005

Vehicle Type	Vehicles					People	
	Total	% of Total	Fatal	% of Fatal	Injury	Killed	Injured
Passenger car	295	37	8	33	95	8	111
Pickup	218	28	5	21	67	5	76
Semi	96	12	5	21	29	1	15
Bus	1	0	0	0	0	0	0
Motorcycle	17	2	0	0	12	0	12
Pedalcyclist	1	0	0	0	1	0	1
Pedestrian	5	1	1	4	4	1	4
Van/4 WD	107	14	3	13	41	5	43
Other	9	1	2	8	2	1	2
Unknown	38	5	0	0	12	0	9
<b>Total</b>	<b>787</b>	<b>100</b>	<b>24</b>	<b>100</b>	<b>263</b>	<b>21</b>	<b>273</b>

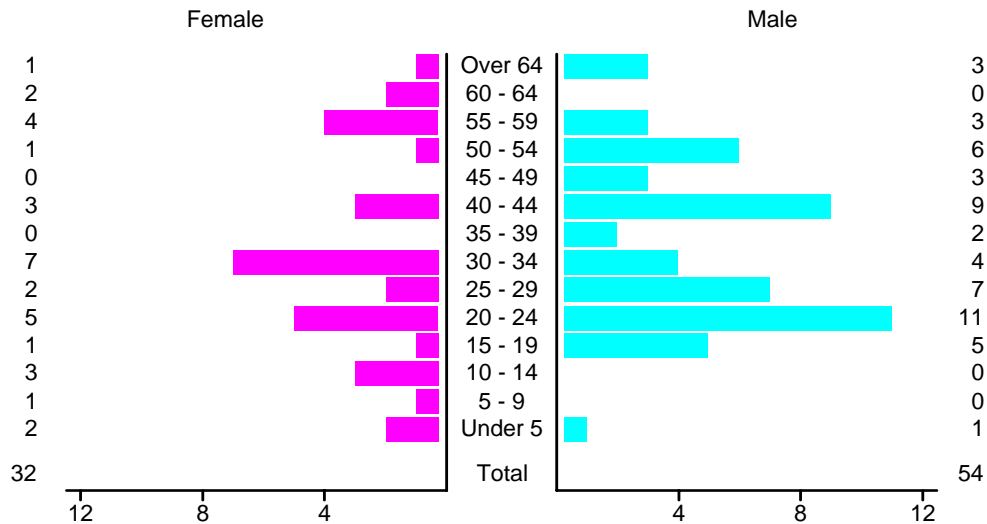
### Crashes in Cibola County by Top Contributing Factor, 2005

Contributing Factor	Crashes				People		
	Total	% of Total	Fatal	% of Fatal	Injury	Killed	Injured
Alcohol involvement	48	10	6	38	19	9	34
Red light running	14	3	0	0	4	0	5
Failing to yield	58	12	1	6	22	1	32
Excessive speed	86	17	3	19	32	3	54
Driving left of center	14	3	1	6	6	1	15
Following too close	39	8	0	0	14	0	25
Improper turning	12	2	0	0	3	0	5
Improper overtaking	5	1	1	6	1	3	4
Improper backing	11	2	0	0	1	0	1
Inop. traffic control	1	0	0	0	1	0	2
Mechanical defect	35	7	1	6	7	1	11
Driver inattention	106	21	3	19	41	3	70
Other	65	13	0	0	10	0	15
<b>Total</b>	<b>494</b>	<b>100</b>	<b>16</b>	<b>100</b>	<b>161</b>	<b>21</b>	<b>273</b>

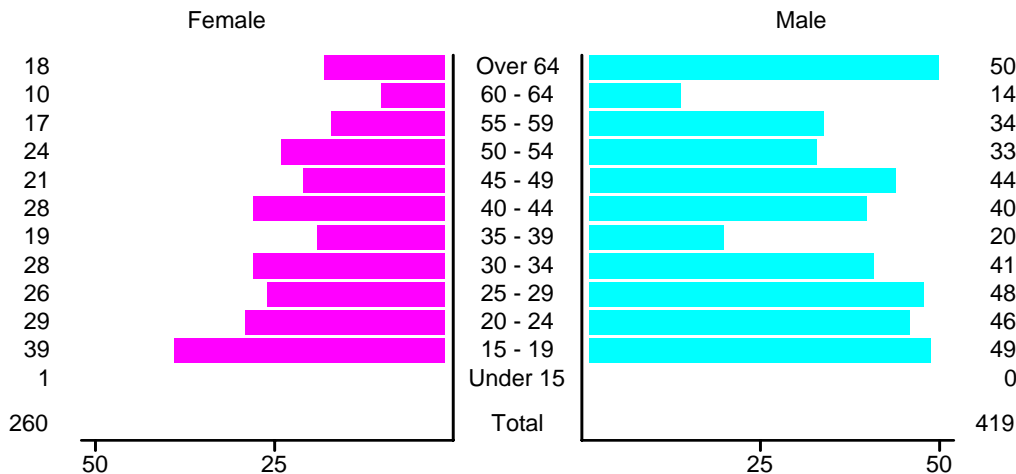
### People in Crashes by Age and Sex in Cibola County, 2005



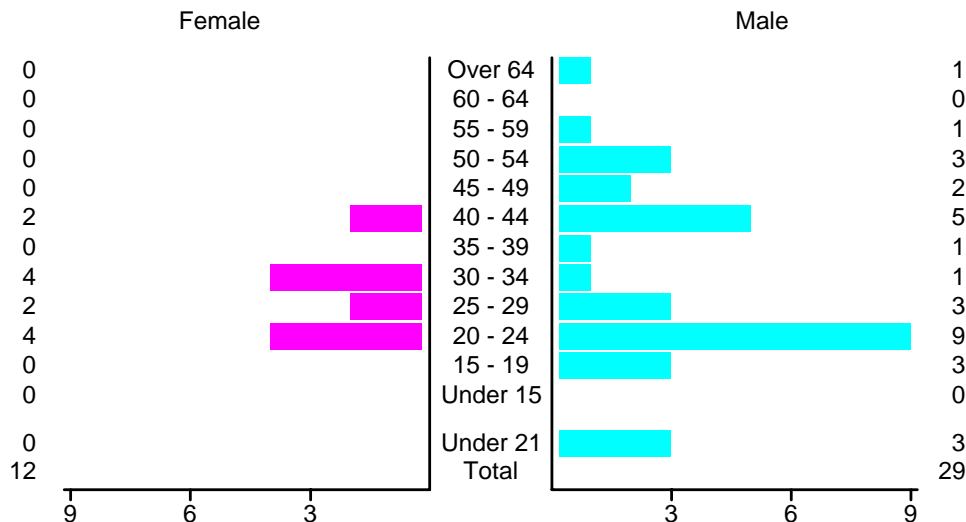
### People in Alcohol-Involved Crashes in Cibola County, 2005 by Age and Sex



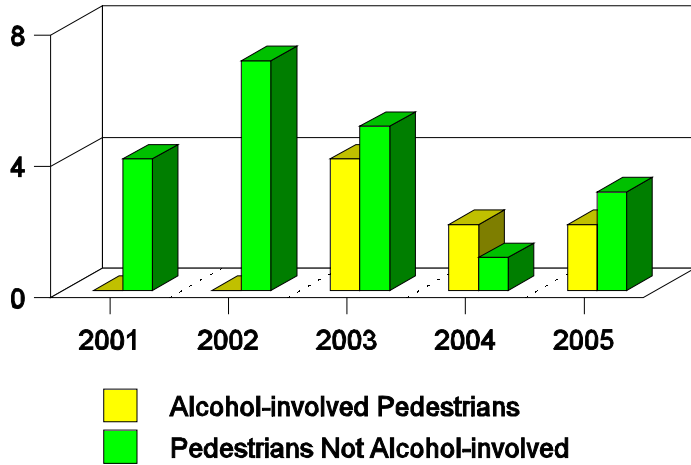
### Drivers in Crashes by Age and Sex in Cibola County, 2005



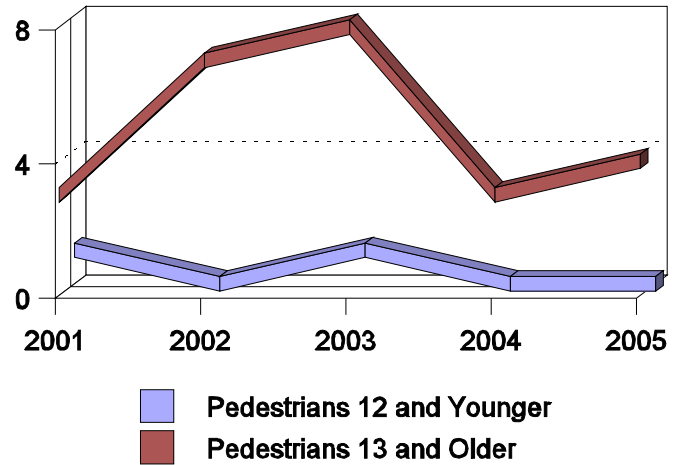
### Alcohol-Involved Drivers in Crashes in Cibola County, 2005 by Age and Sex



**Pedestrians in Crashes in Cibola County  
by Pedestrian Alcohol Involvement**



**Pedestrians in Crashes in Cibola County  
by Age Group**



**'Teenagers' and Young Adults in Crashes in Cibola County by Vehicle Type, 2005**

Vehicle	'Teenage' Drivers			Young Adult Drivers		
	Total	Fatal	Injury	Total	Fatal	Injury
Passenger car	47	0	15	34	1	14
Pickup	30	0	15	21	1	5
Semi	0	0	0	4	0	0
Motorcycle	2	0	1	1	0	1
Pedestrian	1	1	0	0	0	0
Van/4 WD	6	0	4	14	0	7
Unknown	3	0	1	1	0	0
<b>Total</b>	<b>89</b>	<b>1</b>	<b>36</b>	<b>75</b>	<b>2</b>	<b>27</b>

**'Teenagers' and Young Adults in Crashes in Cibola County, 1996-2005**

Year	'Teenagers'				Young Adults			
	All Crashes		Alcohol Crashes		All Crashes		Alcohol Crashes	
	Killed	Injured	Killed	Injured	Killed	Injured	Killed	Injured
2005	0	49	0	3	2	36	1	8
2004	0	39	0	3	2	38	0	8
2003	0	53	0	8	2	44	2	13
2002	0	54	0	16	0	57	0	15
2001	0	37	0	9	3	35	1	7
2000	2	60	2	19	6	52	4	12
1999	1	60	0	5	2	29	1	3
1998	1	29	0	6	3	33	1	8
1997	1	47	1	13	2	34	0	4
1996	4	68	4	7	1	55	0	11