

Doña Ana County Report, 2005

Demographics

In 2005, there were 123,685 licensed drivers in Doña Ana County. Of these, there were 61,257 females and 62,428 males. The population in Doña Ana County was 189,444. The total number of crashes in 2005 was 3,484, yielding a crash rate of 18 per thousand people (the total number of crashes 3,484 divided by the population 189,444 multiplied by 1,000). The corresponding rate for the state was 25 per thousand people.

General Crash Information

Since 1996 the number of crashes has shown no consistent pattern. Fatal and injury crashes have also shown no consistent pattern since 1996. Belt usage (as a percentage) has increased from last year, while belt usage in crashes involving visible and incapacitating injuries has also increased.

Alcohol-related Crash Information

Information about alcohol-involved crashes is included in all sections of this report. Of the 697 people convicted of DWI in Doña Ana County in 2005, 67 percent were first-time DWI convictions (number of first convictions 468 divided by the total number of people convicted 697 multiplied by 100). The corresponding percentage for the state was 61.

Crash Specifics

Crashes involving other vehicles were the most common class, accounting for 70 percent of all crashes. Crashes involving overturns and other vehicles were the most common crash classes which resulted in fatalities. Passenger cars were the vehicle type most often involved in crashes, accounting for 49 percent of all vehicles in crashes. Pickups accounted for 24 percent of vehicles involved in crashes. Together these two vehicle types comprised 72 percent of the vehicles involved in injury crashes. The three most common top contributing factors were driver inattention, failing to yield, and following too close. There were 21 fatal crashes in 2005. The most common top contributing factors for the fatal crashes were alcohol involvement, failing to yield, and excessive speed.

People in Crashes

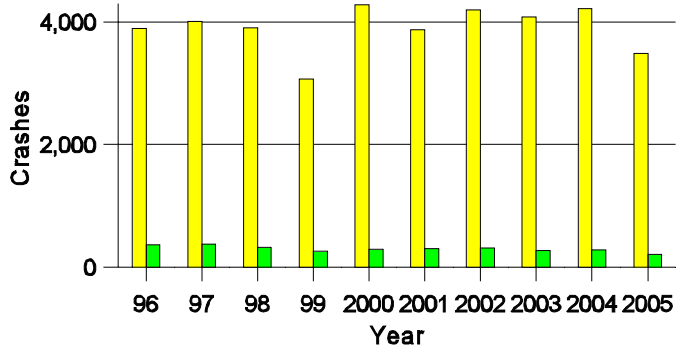
Overall, males were 53 percent of drivers in crashes, although they account for only 50 percent of licensed drivers in Doña Ana County. Fewer pedestrians were involved in crashes this year than last year. In 2005, one 'teenager' and four young adults were killed in crashes in Doña Ana County. Statewide 17 percent of alcohol-involved drivers were under 21; in Doña Ana County 21 percent were under 21.

Note: The 1999 crash file contains 15% fewer crashes than the 1998 file. This may be due to problems implementing the new system after the old system failed, or to under reporting. Care should be used in interpreting differences between 1999 and other years in this report.

- Location of arrest/conviction was determined by police agency/court location, not driver residence.
- Crashes and drivers were counted by the city of occurrence/residence.
- Population was counted according to the Census definition, using 2005 estimates.
- Young adults are people between the ages of 20 and 24.
- 'Teenagers' are people between the ages of 15 and 19.
- Tables only include variable values for which there are data.

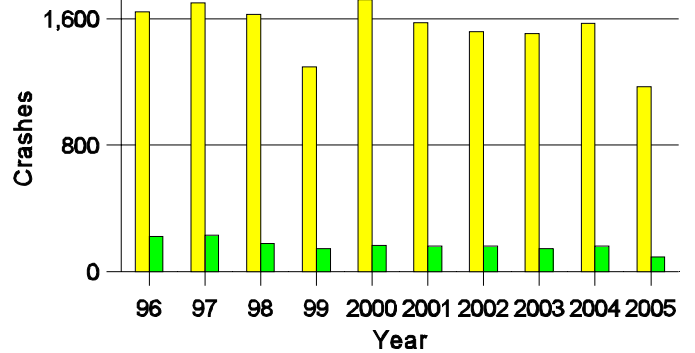
Crashes in Doña Ana County

by Alcohol Involvement



Fatal and Injury Crashes in Doña Ana County

by Alcohol Involvement



Passenger Vehicle Seatbelt Usage and Injuries in Doña Ana County, 2003-2005

Injury Level	2005		2004		2003	
	Total	No Belt	Total	No Belt	Total	No Belt
Killed	15	6	32	19	23	16
Incapacitating injury	183	16	254	35	226	47
Visible injury	263	10	361	40	424	47
Complaint of injury	1,022	13	1,369	28	1,322	41
Unhurt	6,448	49	8,149	68	7,843	98
Total	7,931	94	10,165	190	9,838	249

Lifetime DWI Convictions for Drivers

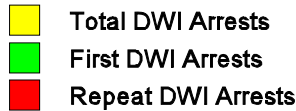
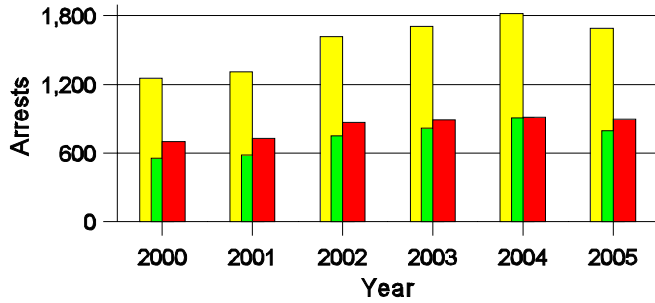
Convicted of DWI Violations in Doña Ana County, 2005

Convictions	Since 2000	Since 1981
1st	562	468
2nd	110	129
3rd	20	53
4th	5	23
5th	0	17
6th	0	3
7th	0	3
8th	0	1
9th	0	0
10 or more	0	0
Total	697	697

Convictions are counts of people convicted of DWI by 7/2006 for violations in 2005 in Doña Ana County. Convictions are not comparable to arrests.

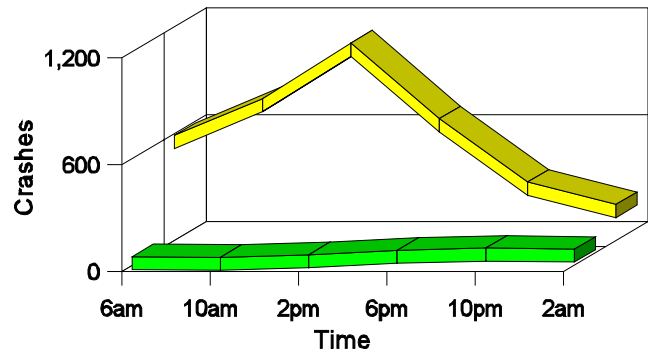
DWI Arrests in Doña Ana County

Showing First Arrests and Repeat Offenders



Crashes in Doña Ana County

by Hour and Alcohol Involvement



Crashes in Doña Ana County by Class, 2005

Class	Crashes					People	
	Total	% of Total	Fatal	% of Fatal	Injury	Killed	Injured
Other vehicle	2,437	70	5	24	826	5	1,272
Pedestrian	29	1	3	14	24	3	28
Fixed object	413	12	1	5	108	1	139
Veh. on other roadway	1	0	0	0	0	0	0
Parked vehicle	277	8	0	0	18	0	24
Overturn	185	5	10	48	116	11	175
Other non-collision	64	2	0	0	22	0	25
Pedalcyclist	33	1	0	0	28	0	29
Railroad train	3	0	1	5	0	1	0
Animal	15	0	0	0	2	0	2
Other object	27	1	1	5	3	1	3
Total	3,484	100	21	100	1,147	22	1,697

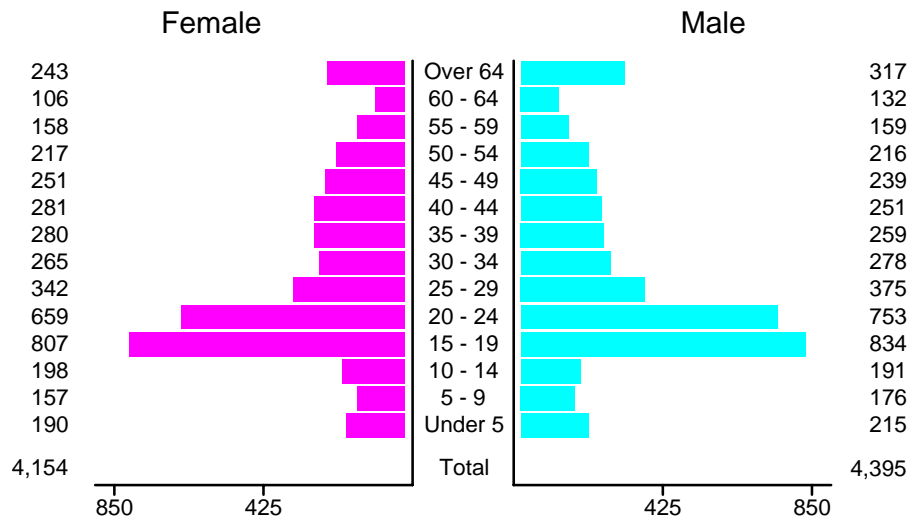
Crashes in Doña Ana County by Vehicle Type, 2005

Vehicle Type	Vehicles					People	
	Total	% of Total	Fatal	% of Fatal	Injury	Killed	Injured
Passenger car	3,167	49	8	22	1,098	5	883
Pickup	1,543	24	6	16	467	3	276
Semi	156	2	2	5	33	0	10
Bus	23	0	0	0	7	0	6
Motorcycle	98	2	3	8	74	2	81
Pedalcyclist	33	1	0	0	28	0	29
Pedestrian	30	0	3	8	25	3	26
Van/4 WD	1,062	16	13	35	367	8	361
Other	29	0	1	3	6	1	4
Unknown	345	5	1	3	60	0	21
Total	6,486	100	37	100	2,165	22	1,697

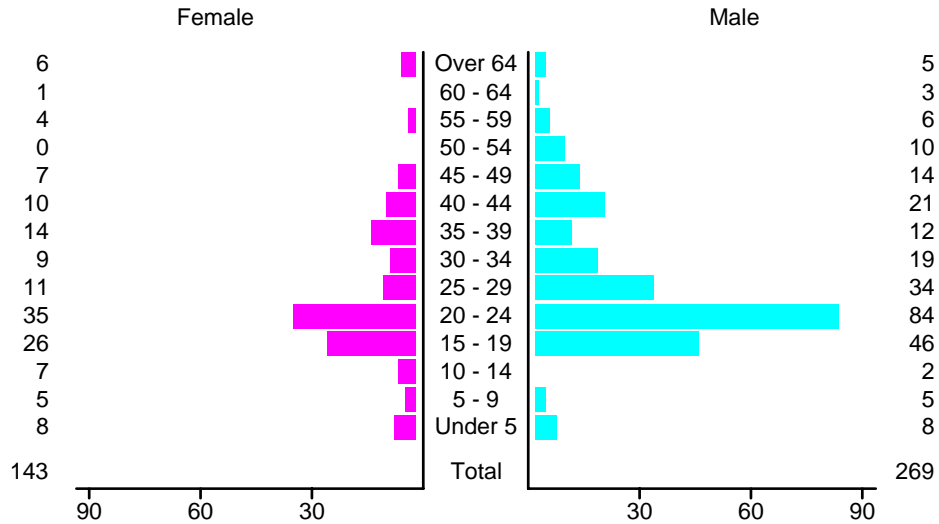
Crashes in Doña Ana County by Top Contributing Factor, 2005

Contributing Factor	Crashes				People		
	Total	% of Total	Fatal	% of Fatal	Injury	Killed	Injured
Alcohol involvement	218	6	5	24	89	5	141
Red light running	334	10	0	0	153	0	247
Failing to yield	511	15	5	24	190	5	294
Excessive speed	329	9	5	24	127	6	167
Driving left of center	90	3	0	0	27	0	40
Following too close	388	11	1	5	128	1	202
Improper turning	123	4	0	0	33	0	47
Improper overtaking	44	1	1	5	6	1	14
Improper backing	120	3	0	0	5	0	6
Inop. traffic control	25	1	0	0	5	0	7
Mechanical defect	93	3	1	5	27	1	48
Driver inattention	984	28	2	10	297	2	419
Improper driving	3	0	0	0	2	0	2
Other	222	6	1	5	58	1	63
Total	3,484	100	21	100	1,147	22	1,697

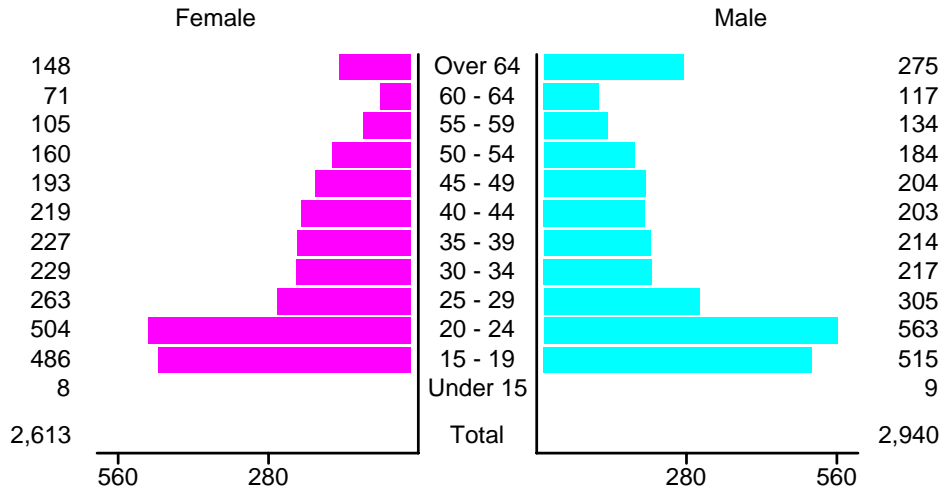
People in Crashes by Age and Sex in Doña Ana County, 2005



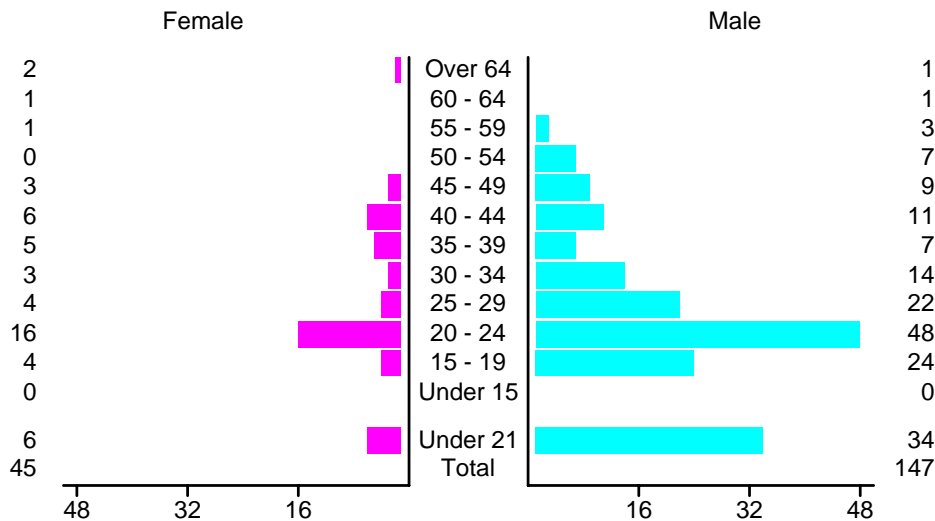
People in Alcohol-Involved Crashes in Doña Ana County, 2005 by Age and Sex



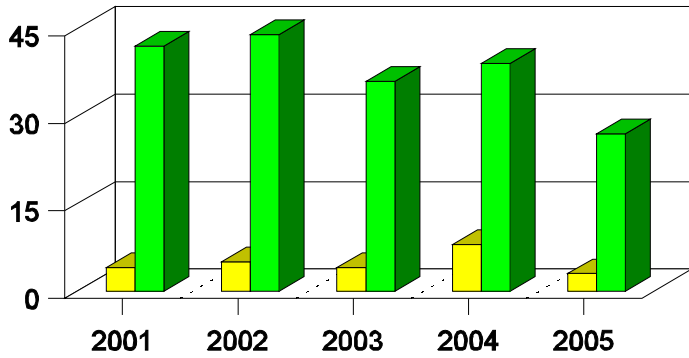
Drivers in Crashes by Age and Sex in Doña Ana County, 2005



Alcohol-Involved Drivers in Crashes in Doña Ana County, 2005 by Age and Sex

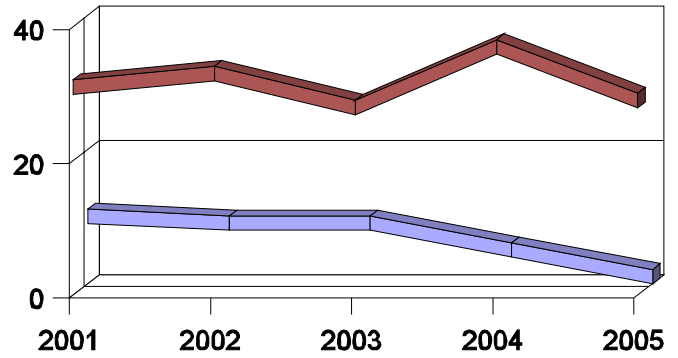


**Pedestrian Crashes in Doña Ana County
by Pedestrian Alcohol Involvement**



■ Alcohol-involved Pedestrians
■ Pedestrians Not Alcohol-involved

**Pedestrian Crashes in Doña Ana County
by Age Group**



■ Pedestrians 12 and Younger
■ Pedestrians 13 and Older

'Teenagers' and Young Adults in Crashes in Doña Ana County by Vehicle Type, 2005

Vehicle	'Teenage' Drivers			Young Adult Drivers		
	Total	Fatal	Injury	Total	Fatal	Injury
Passenger car	634	0	218	668	3	250
Pickup	231	2	74	228	1	80
Semi	1	0	0	5	0	2
Motorcycle	10	1	8	24	1	15
Pedalcyclist	7	0	6	4	0	2
Pedestrian	7	0	7	4	1	3
Van/4 WD	106	1	39	122	1	31
Other	1	0	0	3	1	2
Unknown	18	0	5	19	0	7
Total	1,015	4	357	1,077	8	392

'Teenagers' and Young Adults in Crashes in Doña Ana County, 1996-2005

Year	'Teenagers'				Young Adults			
	All Crashes		Alcohol Crashes		All Crashes		Alcohol Crashes	
	Killed	Injured	Killed	Injured	Killed	Injured	Killed	Injured
2005	1	283	1	17	4	282	0	47
2004	8	410	5	41	9	374	4	60
2003	5	411	2	36	7	364	5	50
2002	6	430	3	59	3	346	3	59
2001	0	428	0	42	2	338	1	47
2000	2	495	0	43	2	400	2	48
1999	4	383	4	54	2	257	1	34
1998	6	443	5	46	1	369	0	64
1997	7	486	4	80	5	367	3	75
1996	2	469	1	71	3	390	3	70