

Española Community Report, 2005

Demographics

In 2005, there were 11,630 licensed drivers in Española. Of these, there were 6,005 females and 5,625 males. The population of Española was 9,655. The total number of crashes in 2005 was 610, yielding a crash rate of 63 per thousand people (total number of crashes 610 divided by total population 9,655 times 1,000). The corresponding rate for the state was 25 per thousand people.

General Crash Information

Since 1996 the number of crashes has shown no consistent pattern. Fatal and injury crashes have also shown no consistent pattern since 1996. Belt usage (as a percentage) has increased from last year, while belt usage in crashes involving visible and incapacitating injuries has decreased. There were no fatalities in the seven intersections with the most crashes in 2004. Of these intersections, six involve Riverside Drive.

Alcohol-related Crash Information

Information about alcohol-involved crashes is included in all sections of this report. Of the 143 people convicted of DWI in Española, 43 percent were first-time DWI convictions (number of first convictions 62 divided by the total number of people convicted 143 times 100). The corresponding percent for the state is 61.

Crash Specifics

Crashes involving other vehicles were the most common class, accounting for 86 percent of all crashes. A crash involving an other vehicle resulted in a fatality. Passenger cars were the vehicle type most often involved in crashes, accounting for 57 percent of all vehicles in crashes. Pickups accounted for 23 percent of vehicles involved in crashes. Together these two vehicle types comprised 80 percent of the vehicles involved in injury crashes. The two most common top contributing factors were following too close and failing to yield. There was one fatal crash in 2005. The top contributing factor for the fatal crash was failing to yield.

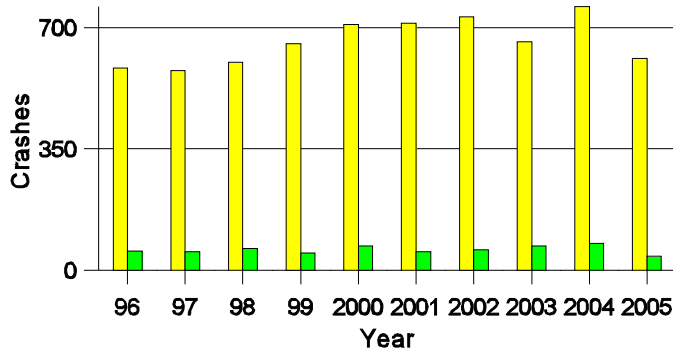
People in Crashes

Overall, males were 54 percent of drivers in crashes, although they account for only 48 percent of licensed drivers in Española. There were three pedestrians in crashes. In 2005, no 'teenagers' or young adults were killed in crashes in Española. Statewide 17 percent of alcohol-involved drivers were under 21; in Española eight percent were under 21.

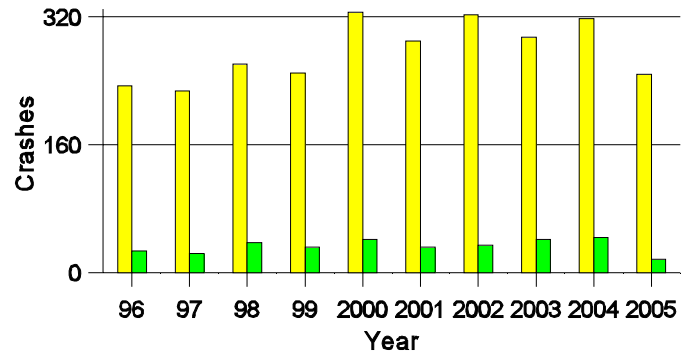
Note: The 1999 crash file contains 15% fewer crashes than the 1998 file. This may be due to problems implementing the new system after the old system failed, or to under reporting. Care should be used in interpreting differences between 1999 and other years in this report.

- Location of arrest/conviction was determined by police agency/court location, not driver residence.
- Crashes and drivers were counted by the city of occurrence/residence.
- Population was counted according to the Census definition.
The city population data is from the most current 2005 estimates.
- Young adults are people between the ages of 20 and 24.
- 'Teenagers' are people between the ages of 15 and 19.
- Tables only include variable values for which there are data.

Crashes in Española by Alcohol Involvement



Fatal and Injury Crashes in Española by Alcohol Involvement



Passenger Vehicle Seatbelt Usage and Injuries in Española, 2003-2005

Injury Level	2005		2004		2003	
	Total	No Belt	Total	No Belt	Total	No Belt
Killed	0	0	1	1	0	0
Incapacitating injury	10	2	13	0	11	1
Visible injury	48	7	48	5	68	10
Complaint of injury	325	5	399	14	365	13
Unhurt	1,247	12	1,564	32	1,345	21
Total	1,630	26	2,025	52	1,789	45

The Seven Intersections in Española with the Most Crashes, 2005

Intersection	Crashes			People	
	Total	Fatal	Injury	Killed	Injured
La Joya St @ Riverside Dr	16	0	5	0	5
NM 106 @ US 84/285	12	0	6	0	16
Fairview Ln @ Riverside Dr	46	0	15	0	23
Oñate St @ Riverside Dr	12	0	3	0	5
Pueblo Dr @ Riverside Dr	14	0	6	0	14
Riverside Dr @ Santa Cruz Rd	35	0	13	0	21
Riverside Dr @ Santa Fe Hwy	18	0	8	0	20

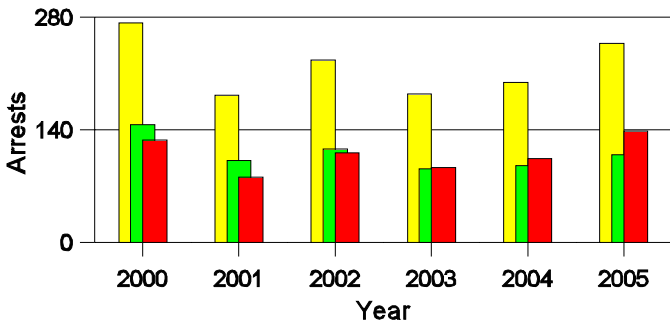
**Lifetime DWI Convictions for Drivers
Convicted of DWI Violations in Española, 2005**

Convictions	Since 2000	Since 1981
1st	104	62
2nd	30	29
3rd	8	33
4th	1	10
5th	0	2
6th	0	6
7th	0	0
8th	0	1
9th	0	0
10 or more	0	0
Total	143	143

Convictions are counts of people convicted of DWI by 7/2006 for violations in 2005 in Española.
Convictions are not comparable to arrests.

DWI Arrests in Española

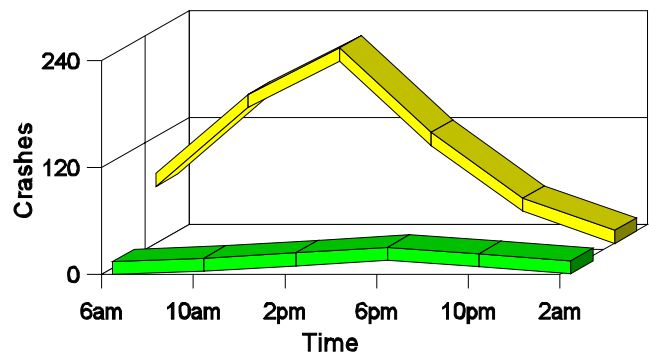
Showing First Arrests and Repeat Offenders



- Total DWI Arrests
- First DWI Arrests
- Repeat DWI Arrests

Crashes in Española

by Hour and Alcohol Involvement



- All Crashes
- Alcohol-involved Crashes

Crashes in Española by Class, 2005

Class	Crashes				People		
	Total	% of Total	Fatal	% of Fatal	Injury	Killed	Injured
Other vehicle	527	86	1	100	214	1	365
Pedestrian	3	0	0	0	2	0	2
Fixed object	56	9	0	0	21	0	26
Parked vehicle	12	2	0	0	1	0	1
Overturn	9	1	0	0	8	0	13
Other non-collision	1	0	0	0	1	0	1
Animal	1	0	0	0	0	0	0
Other object	1	0	0	0	0	0	0
Total	610	100	1	100	247	1	408

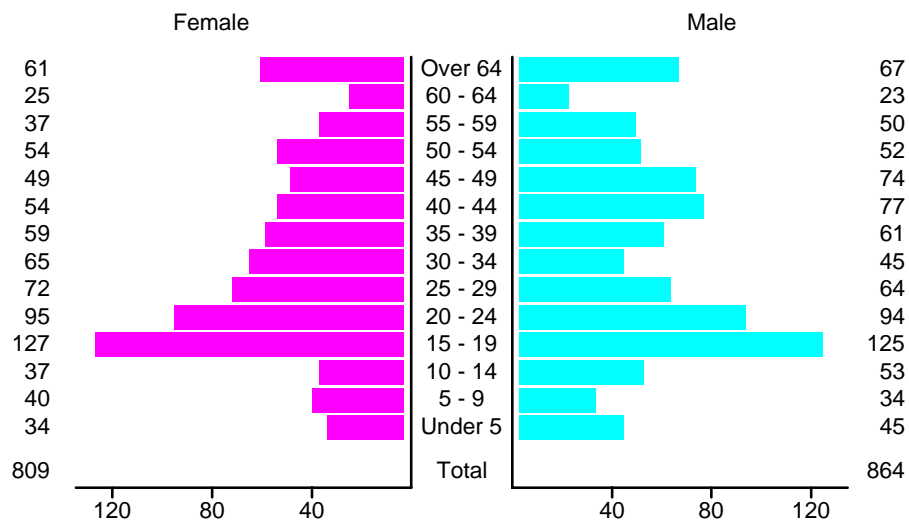
Crashes in Española by Vehicle Type, 2005

Vehicle Type	Vehicles					People	
	Total	% of Total	Fatal	% of Fatal	Injury	Killed	Injured
Passenger car	679	57	1	50	302	0	258
Pickup	272	23	1	50	95	1	71
Semi	13	1	0	0	3	0	0
Bus	2	0	0	0	0	0	0
Motorcycle	10	1	0	0	10	0	14
Pedestrian	3	0	0	0	2	0	2
Van/4 WD	164	14	0	0	67	0	62
Other	2	0	0	0	0	0	0
Unknown	52	4	0	0	18	0	1
Total	1,197	100	2	100	497	1	408

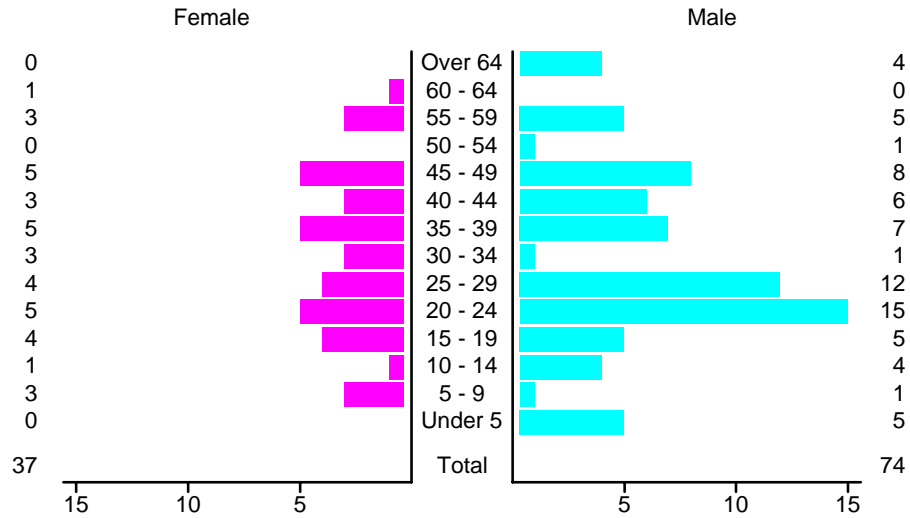
Crashes in Española by Top Contributing Factor, 2005

Contributing Factor	Crashes					People	
	Total	% of Total	Fatal	% of Fatal	Injury	Killed	Injured
Alcohol involvement	42	7	0	0	18	0	34
Red light running	35	6	0	0	16	0	43
Failing to yield	131	21	1	100	51	1	85
Excessive speed	50	8	0	0	28	0	44
Driving left of center	20	3	0	0	6	0	8
Following too close	197	32	0	0	83	0	126
Improper turning	11	2	0	0	3	0	3
Improper overtaking	5	1	0	0	2	0	2
Improper backing	7	1	0	0	0	0	0
Inop. traffic control	1	0	0	0	0	0	0
Mechanical defect	3	0	0	0	0	0	0
Driver inattention	73	12	0	0	27	0	48
Other	35	6	0	0	13	0	15
Total	610	100	1	100	247	1	408

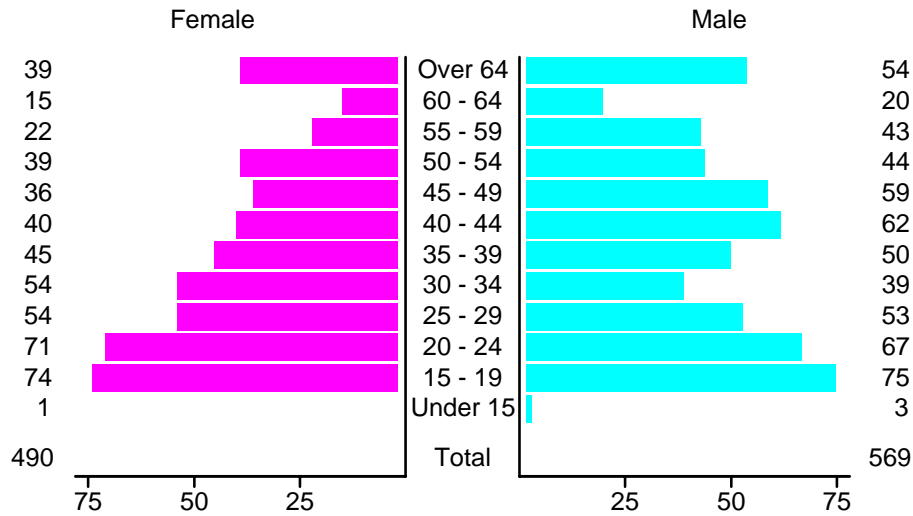
People in Crashes by Age and Sex in Española, 2005



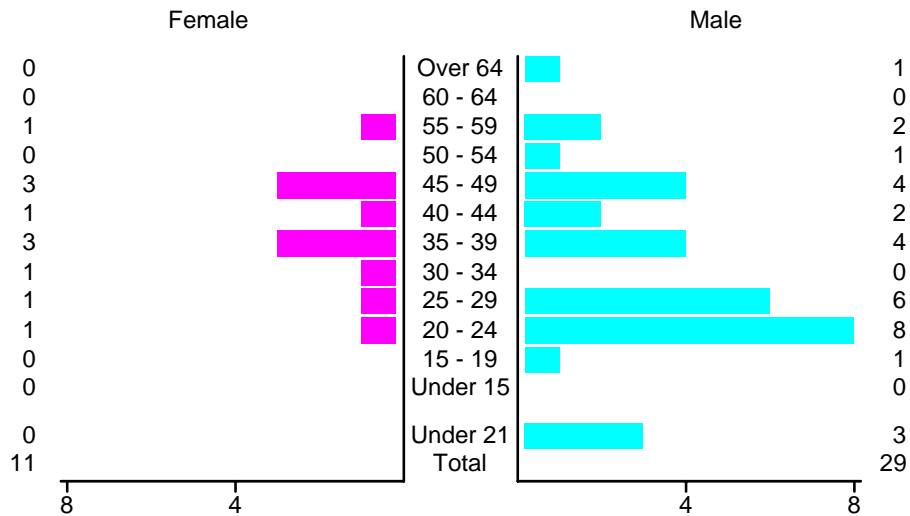
People in Alcohol-Involved Crashes in Española, 2005 by Age and Sex



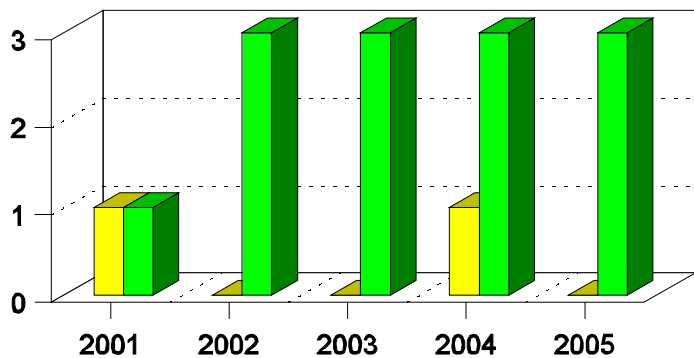
Drivers in Crashes by Age and Sex in Española 2005



Alcohol-Involved Drivers in Crashes in Española, 2005 by Age and Sex

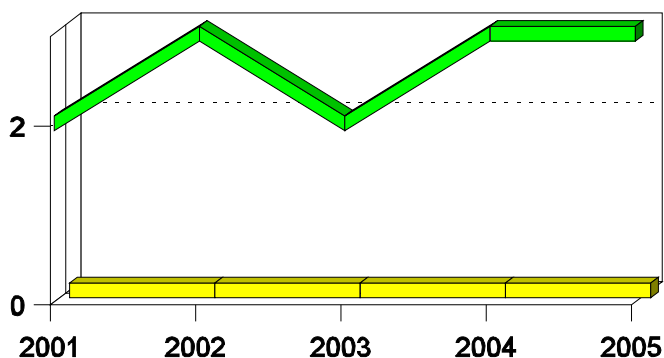


**Pedestrian in Crashes in Española
by Pedestrian Alcohol Involvement**



■ Alcohol-involved Pedestrians
■ Pedestrians Not Alcohol-involved

**Pedestrian in Crashes in Española
by Age Group**



■ Pedestrians 12 and Younger
■ Pedestrians 13 and Older

'Teenagers' and Young Adults in Crashes in Española by Vehicle Type, 2005

Vehicle	'Teenage' Drivers			Young Adult Drivers		
	Total	Fatal	Injury	Total	Fatal	Injury
Passenger car	118	1	56	97	0	39
Pickup	13	0	8	26	0	10
Motorcycle	2	0	2	1	0	1
Pedestrian	0	0	0	1	0	1
Van/4 WD	14	0	7	14	0	6
Other	1	0	0	0	0	0
Unknown	1	0	0	0	0	0
Total	149	1	73	139	0	57

'Teenagers' and Young Adults Killed and Injured in Crashes by Year in Española, 1996-2005

Year	'Teenagers'				Young Adults			
	All Crashes		Alcohol Crashes		All Crashes		Alcohol Crashes	
	Killed	Injured	Killed	Injured	Killed	Injured	Killed	Injured
2005	0	70	0	3	0	43	0	6
2004	0	65	0	11	0	50	0	13
2003	0	106	0	18	0	60	0	13
2002	0	93	0	13	1	57	1	7
2001	0	96	0	13	0	56	0	14
2000	1	80	0	15	2	57	0	10
1999	1	65	1	7	0	53	0	9
1998	0	62	0	8	1	54	0	5
1997	1	45	1	10	0	43	0	8
1996	3	74	3	11	2	45	2	7