

Las Vegas Community Report, 2005

Demographics

In 2005, there were 12,342 licensed drivers in Las Vegas. Of these, there were 6,467 females and 5,875 males. The population of Las Vegas was 14,020. The total number of crashes in 2005 was 354, yielding a crash rate of 25 per thousand people (total number of crashes 354 divided by total population 14,020 times 1,000). The corresponding rate for the state was 25 per thousand people.

General Crash Information

Since 1996 the number of crashes has shown no consistent pattern. Fatal and injury crashes have shown no consistent pattern since 1996. Belt usage (as a percentage) has increased from last year, while belt usage in crashes involving visible and incapacitating injuries has also increased from last year. There were no fatalities in the seven intersections with the most crashes in 2005. Of these intersections, 7th Street was involved four times.

Alcohol-related Crash Information

Information about alcohol-involved crashes is included in all sections of this report. Of the 65 people convicted of DWI in Las Vegas, 51 percent were first-time DWI convictions (number of first convictions 33 divided by the total number of people convicted 65 times 100). The corresponding percent for the state is 61.

Crash Specifics

Crashes involving other vehicles were the most common class, accounting for 71 percent of all crashes. A crash involving an other vehicle resulted in a fatality. Passenger cars were the vehicle type most often involved in crashes, accounting for 56 percent of all vehicles in crashes. Pickups accounted for 23 percent of vehicles involved in crashes. Together these two vehicle types comprised 79 percent of the vehicles involved in injury crashes. The two most common top contributing factors were driver inattention and failing to yield. There was one fatal crash in 2005. The top contributing factor for the fatal crash was improper driving.

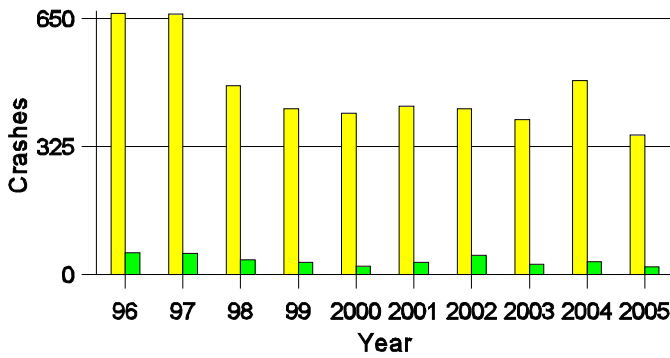
People in Crashes

Overall, males were 51 percent of drivers in crashes, although they account for only 48 percent of licensed drivers in Las Vegas. There were three pedestrians in crashes. In 2005, no 'teenagers' or young adults were killed in crashes in Las Vegas. Statewide 17 percent of alcohol-involved drivers were under 21; in Las Vegas 32 percent were under 21.

Note: The 1999 crash file contains 15% fewer crashes than the 1998 file. This may be due to problems implementing the new system after the old system failed, or to under reporting. Care should be used in interpreting differences between 1999 and other years in this report.

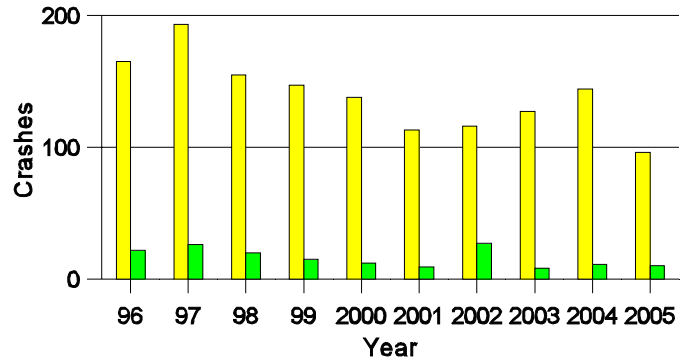
- Location of arrest/conviction was determined by police agency/court location, not driver residence.
- Crashes and drivers were counted by the city of occurrence/residence.
- Population was counted according to the Census definition.
The city population data is from the most current 2005 estimates.
- Young adults are people between the ages of 20 and 24.
- 'Teenagers' are people between the ages of 15 and 19.
- Tables only include variable values for which there are data.

Crashes in Las Vegas by Alcohol Involvement



■ All Crashes
■ Alcohol-involved Crashes

Fatal and Injury Crashes in Las Vegas by Alcohol Involvement



■ All Fatal and Injury Crashes
■ Alcohol-involved Fatal and Injury Crashes

Passenger Vehicle Seatbelt Usage and Injuries in Las Vegas, 2003-2005

Injury Level	2005		2004		2003	
	Total	No Belt	Total	No Belt	Total	No Belt
Killed	0	0	0	0	2	2
Incapacitating injury	16	0	5	1	11	1
Visible injury	19	4	27	6	26	5
Complaint of injury	96	1	165	2	136	2
Unhurt	652	3	933	2	753	9
Total	783	8	1,130	11	928	19

The Seven Intersections in Las Vegas with the Most Crashes, 2005

Intersection	Crashes			People	
	Total	Fatal	Injury	Killed	Injured
12th St @ National St	4	0	2	0	3
7th St @ Baca Ave	5	0	0	0	0
7th St @ Legion Dr	6	0	1	0	2
7th St @ Mills Ave	15	0	4	0	6
7th St @ Mountain View Dr	10	0	4	0	7
8th St @ Mills Ave	15	0	6	0	7
Grand Ave @ University Ave	6	0	1	0	1

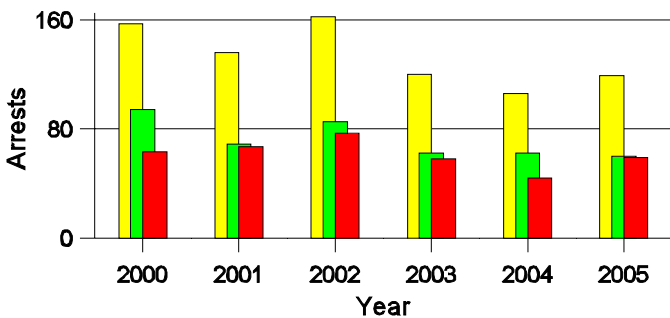
**Lifetime DWI Convictions for Drivers
Convicted of DWI Violations in Las Vegas, 2005**

Convictions	Since 2000	Since 1981
1st	49	33
2nd	12	10
3rd	4	7
4th	0	4
5th	0	5
6th	0	5
7th	0	1
8th	0	0
9th	0	0
10 or more	0	0
Total	65	65

Convictions are counts of people convicted of DWI by 7/2006 for violations in 2005 in Las Vegas.
Convictions are not comparable to arrests.

DWI Arrests in Las Vegas

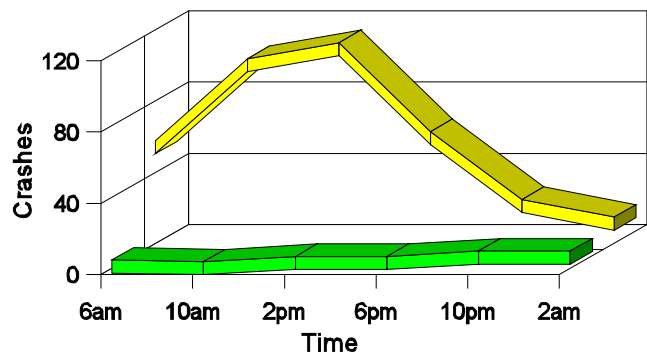
Showing First Arrests and Repeat Offenders



■ Total DWI Arrests
■ First DWI Arrests
■ Repeat DWI Arrests

Crashes in Las Vegas

by Hour and Alcohol Involvement



■ All Crashes
■ Alcohol-involved Crashes

Crashes in Las Vegas by Class, 2005

Class	Crashes				People		
	Total	% of Total	Fatal	% of Fatal	Injury	Killed	Injured
Other vehicle	253	71	1	100	77	1	122
Pedestrian	3	1	0	0	3	0	3
Fixed object	34	10	0	0	7	0	8
Parked vehicle	55	16	0	0	5	0	8
Overturn	5	1	0	0	2	0	5
Other non-collision	1	0	0	0	1	0	2
Pedalcyclist	1	0	0	0	0	0	0
Other object	2	1	0	0	0	0	0
Total	354	100	1	100	95	1	148

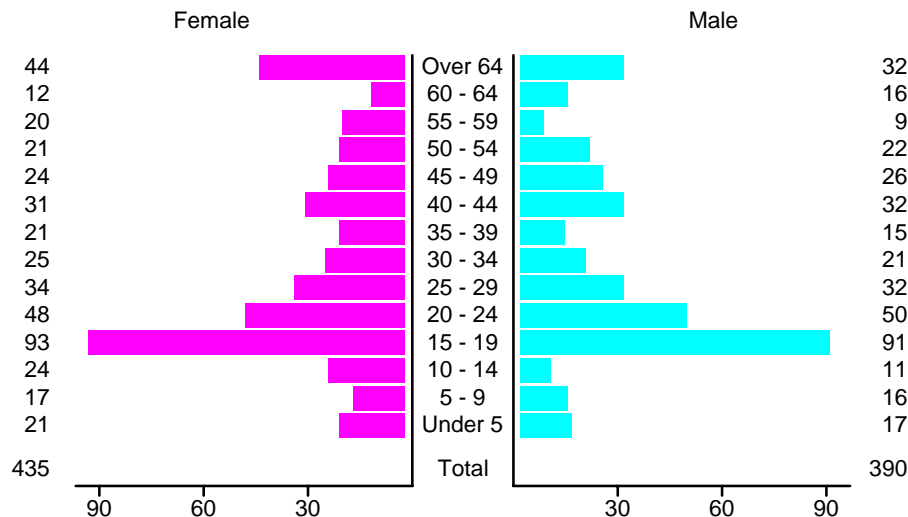
Crashes in Las Vegas by Vehicle Type, 2005

Vehicle Type	Vehicles				People		
	Total	% of Total	Fatal	% of Fatal	Injury	Killed	Injured
Passenger car	387	56	1	50	106	0	89
Pickup	155	23	0	0	48	0	27
Semi	7	1	0	0	3	0	0
Bus	3	0	0	0	0	0	0
Motorcycle	6	1	1	50	5	1	6
Pedalcyclist	1	0	0	0	0	0	0
Pedestrian	3	0	0	0	3	0	3
Van/4 WD	103	15	0	0	28	0	22
Unknown	23	3	0	0	2	0	1
Total	688	100	2	100	195	1	148

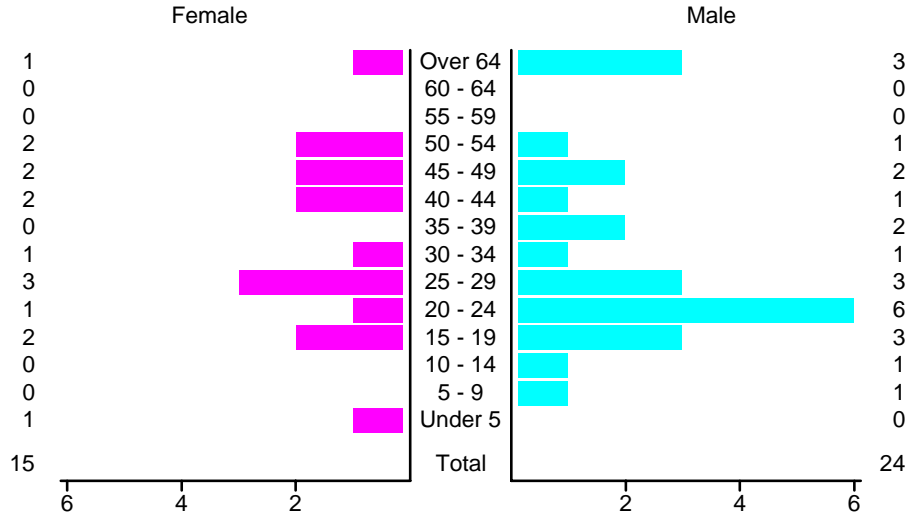
Crashes in Las Vegas by Top Contributing Factor, 2005

Contributing Factor	Crashes				People		
	Total	% of Total	Fatal	% of Fatal	Injury	Killed	Injured
Alcohol involvement	21	6	0	0	10	0	19
Red light running	16	5	0	0	3	0	4
Failing to yield	67	19	0	0	22	0	38
Excessive speed	38	11	0	0	14	0	26
Driving left of center	2	1	0	0	0	0	0
Following too close	38	11	0	0	9	0	13
Improper turning	10	3	0	0	2	0	3
Improper overtaking	6	2	0	0	1	0	2
Improper backing	27	8	0	0	2	0	3
Mechanical defect	9	3	0	0	5	0	6
Driver inattention	96	27	0	0	23	0	30
Improper driving	1	0	1	100	0	1	0
Other	23	6	0	0	4	0	4
Total	354	100	1	100	95	1	148

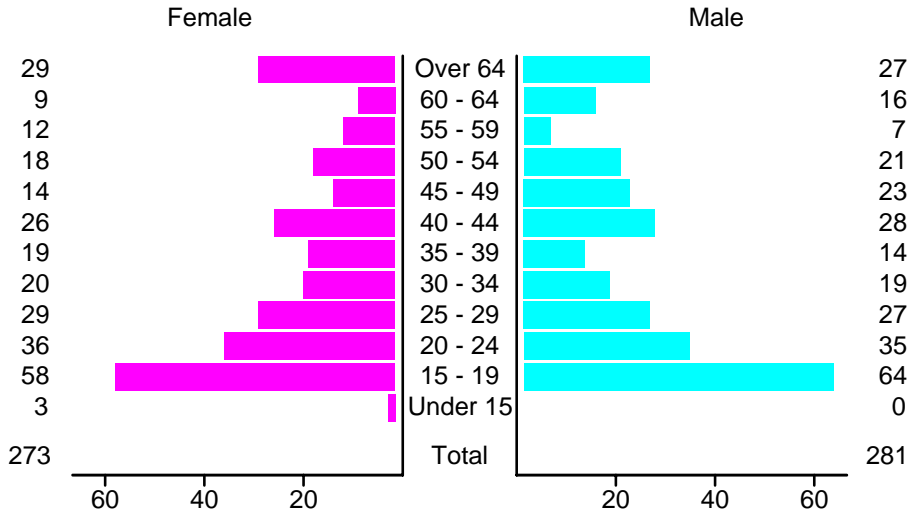
People in Crashes by Age and Sex in Las Vegas, 2005



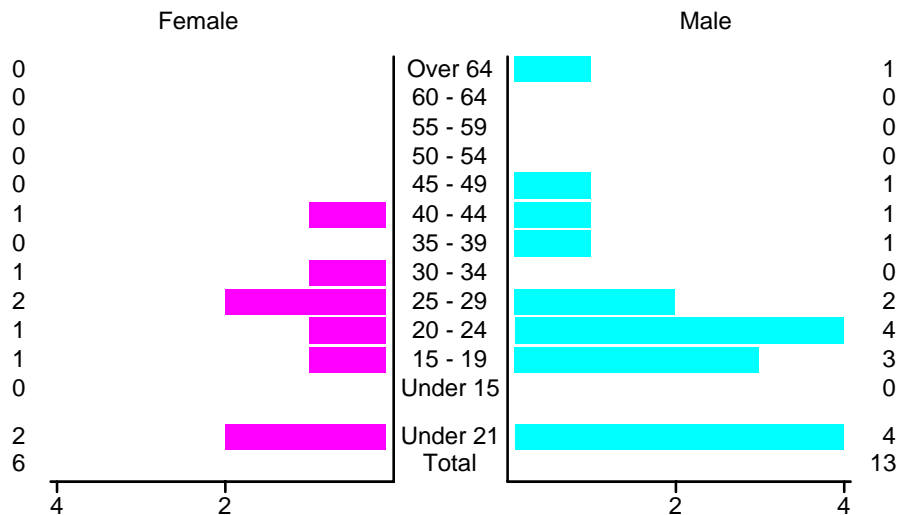
People in Alcohol-Involved Crashes in Las Vegas, 2005 by Age and Sex



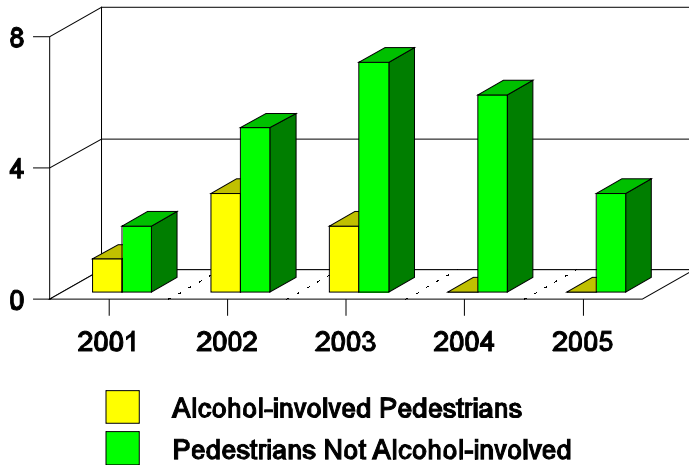
Drivers in Crashes by Age and Sex in Las Vegas, 2005



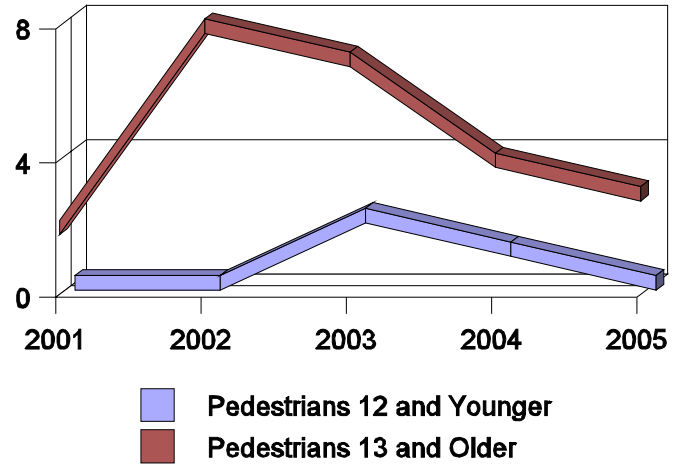
Alcohol-Involved Drivers in Crashes in Las Vegas, 2005 by Age and Sex



**Pedestrian in Crashes in Las Vegas
by Pedestrian Alcohol Involvement**



**Pedestrian in Crashes in Las Vegas
by Age Group**



'Teenagers' and Young Adults in Crashes in Las Vegas by Vehicle Type, 2005

Vehicle	'Teenage' Drivers			Young Adult Drivers		
	Total	Fatal	Injury	Total	Fatal	Injury
Passenger car	84	0	29	50	1	15
Pickup	25	0	8	7	0	1
Motorcycle	0	0	0	2	0	2
Pedestrian	1	0	1	0	0	0
Van/4 WD	13	0	3	11	0	2
Unknown	0	0	0	1	0	1
Total	123	0	41	71	1	21

'Teenagers' and Young Adults Killed and Injured in Crashes by Year in Las Vegas, 1996-2005

Year	'Teenagers'				Young Adults			
	All Crashes		Alcohol Crashes		All Crashes		Alcohol Crashes	
	Killed	Injured	Killed	Injured	Killed	Injured	Killed	Injured
2005	0	30	0	3	0	18	0	1
2004	1	45	1	3	0	29	0	5
2003	0	35	0	0	0	23	0	5
2002	0	31	0	5	0	21	0	3
2001	0	37	0	3	0	19	0	2
2000	0	56	0	5	0	14	0	1
1999	0	54	0	2	0	20	0	4
1998	0	42	0	4	2	32	2	8
1997	0	51	0	8	0	50	0	10
1996	0	52	0	4	0	39	0	15