

# Navajo Community Report, 2005

## Demographics

In 2005, there were 946 licensed drivers in the Navajo Nation in NM. Of these, there were 511 females and 435 males. The total number of crashes in 2005 was 156, yielding a crash rate of 165 per thousand licensed drivers (total number of crashes 156 divided by total number of licensed drivers 946 times 1,000). The corresponding rate for the state was 37 per thousand licensed drivers.

## General Crash Information

Since 1996 the number of crashes has shown no consistent pattern. Fatal and injury crashes are also the lowest since 1996. Belt usage (as a percentage) has increased from last year, while belt usage in crashes involving visible and incapacitating injuries has decreased.

## Alcohol-related Crash Information

DWI conviction data are not available for Navajo.

## Crash Specifics

Crashes involving other vehicles were the most common class, accounting for 46 percent of all crashes. Crashes involving other vehicles and overturns were the most common crash class which resulted in fatalities. Passenger cars were the vehicle type most often involved in crashes, accounting for 40 percent of all vehicles in crashes. Pickups accounted for 39 percent of vehicles involved in crashes. Together these two vehicle types comprised 80 percent of the vehicles involved in injury crashes. The three most common top contributing factors were alcohol involvement, excessive speed, and driver inattention. There were seven fatal crashes in 2005. The most common top contributing factor for the fatal crashes was alcohol involvement.

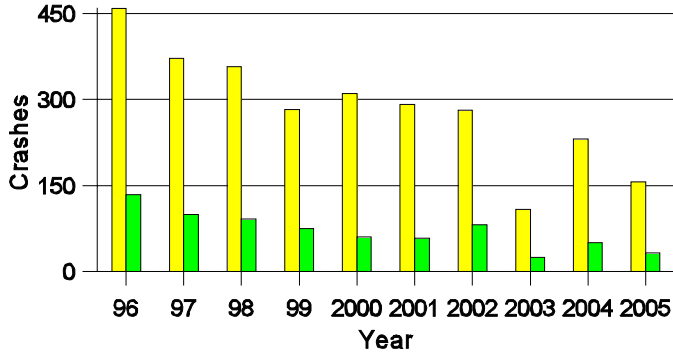
## People in Crashes

Overall, males were 60 percent of drivers in crashes, although they account for only 46 percent of licensed drivers in the Navajo Nation in NM. There were two pedestrians involved in crashes. In 2005, two 'teenagers' and one young adult were killed in crashes in the Navajo Nation in NM. Statewide 17 percent of alcohol-involved drivers were under 21; in the Navajo Nation in NM 11 percent were under 21.

**Note:** The 1999 crash file contains 15% fewer crashes than the 1998 file. This may be due to problems implementing the new system after the old system failed, or to under reporting. Care should be used in interpreting differences between 1999 and other years in this report.

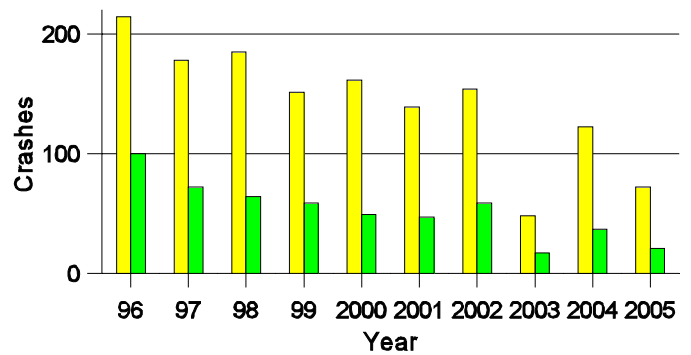
- Location of arrest/conviction was determined by police agency/court location, not driver residence.
- Crashes and drivers were counted by the city of occurrence/residence.
- Young adults are people between the ages of 20 and 24.
- 'Teenagers' are people between the ages of 15 and 19.
- Tables only include variable values for which there are data.

**Crashes in Navajo  
by Alcohol Involvement**



■ All Crashes  
■ Alcohol-involved Crashes

**Fatal and Injury Crashes in Navajo  
by Alcohol Involvement**

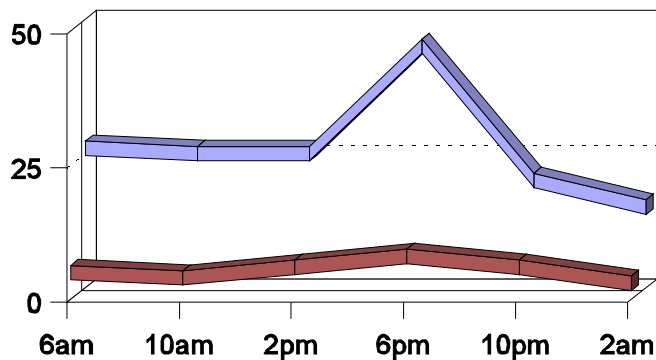


■ All Fatal and Injury Crashes  
■ Alcohol-involved Fatal and Injury Crashes

**Passenger Vehicle Seatbelt Usage and Injuries in Navajo, 2003-2005**

Injury Level	2005		2004		2003	
	Total	No Belt	Total	No Belt	Total	No Belt
Killed	7	5	21	13	8	5
Incapacitating injury	17	4	26	6	4	1
Visible injury	33	9	46	8	20	4
Complaint of injury	85	4	105	7	56	10
Unhurt	263	12	264	18	152	2
<b>Total</b>	<b>405</b>	<b>34</b>	<b>462</b>	<b>52</b>	<b>240</b>	<b>22</b>

**Crashes in Navajo  
by Hour and Alcohol Involvement**



■ All Crashes  
■ Alcohol-involved Crashes

**Crashes in Navajo by Class, 2005**

Class	Crashes					People	
	Total	% of Total	Fatal	% of Fatal	Injury	Killed	Injured
Other vehicle	72	46	3	43	38	4	100
Pedestrian	2	1	1	14	1	1	1
Fixed object	21	13	0	0	5	0	9
Parked vehicle	3	2	0	0	0	0	0
Overturn	30	19	3	43	16	5	29
Other non-collision	2	1	0	0	0	0	0
Animal	25	16	0	0	5	0	8
Other object	1	1	0	0	0	0	0
<b>Total</b>	<b>156</b>	<b>100</b>	<b>7</b>	<b>100</b>	<b>65</b>	<b>10</b>	<b>147</b>

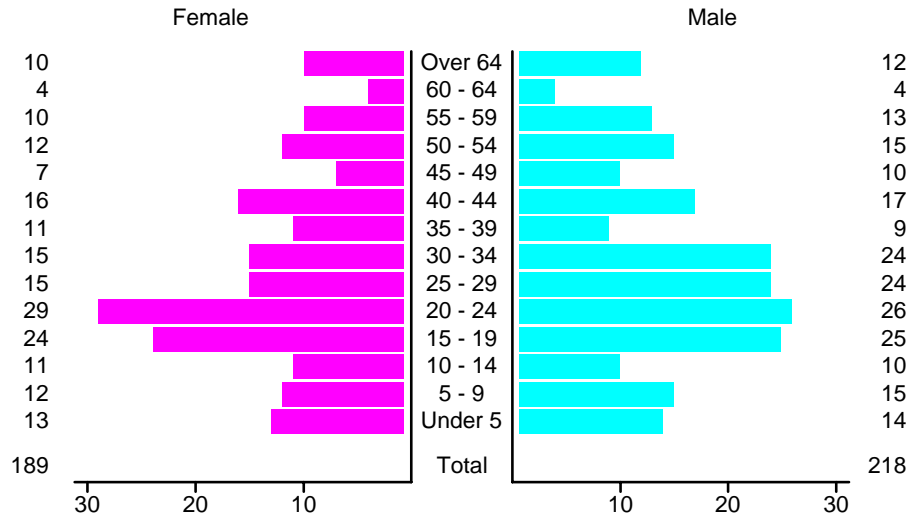
**Crashes in Navajo by Vehicle Type, 2005**

Vehicle Type	Vehicles					People	
	Total	% of Total	Fatal	% of Fatal	Injury	Killed	Injured
Passenger car	97	40	4	33	46	3	64
Pickup	94	39	4	33	43	4	54
Semi	8	3	1	8	2	0	0
Motorcycle	3	1	1	8	2	2	3
Pedestrian	2	1	1	8	1	1	1
Van/4 WD	33	14	0	0	17	0	25
Other	1	0	0	0	0	0	0
Unknown	3	1	1	8	0	0	0
<b>Total</b>	<b>241</b>	<b>100</b>	<b>12</b>	<b>100</b>	<b>111</b>	<b>10</b>	<b>147</b>

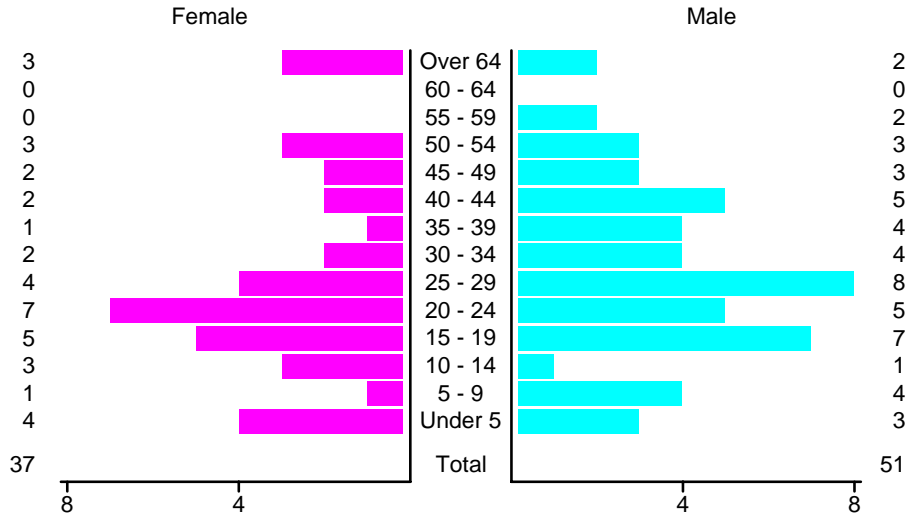
**Crashes in Navajo by Top Contributing Factor, 2005**

Contributing Factor	Crashes					People	
	Total	% of Total	Fatal	% of Fatal	Injury	Killed	Injured
Alcohol involvement	33	21	3	43	18	3	42
Red light running	4	3	0	0	4	0	8
Failing to yield	12	8	2	29	8	3	21
Excessive speed	25	16	1	14	12	3	27
Driving left of center	8	5	0	0	3	0	9
Following too close	6	4	0	0	2	0	4
Improper turning	3	2	0	0	1	0	1
Improper overtaking	1	1	0	0	0	0	0
Mechanical defect	9	6	0	0	3	0	3
Driver inattention	22	14	1	14	8	1	24
Other	33	21	0	0	6	0	8
<b>Total</b>	<b>156</b>	<b>100</b>	<b>7</b>	<b>100</b>	<b>65</b>	<b>10</b>	<b>147</b>

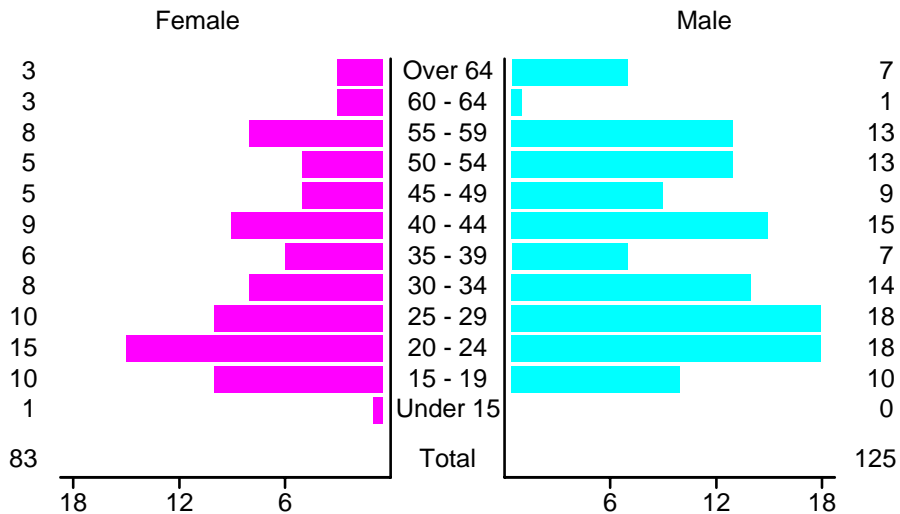
### People in Crashes in Navajo, 2005 by Age and Sex



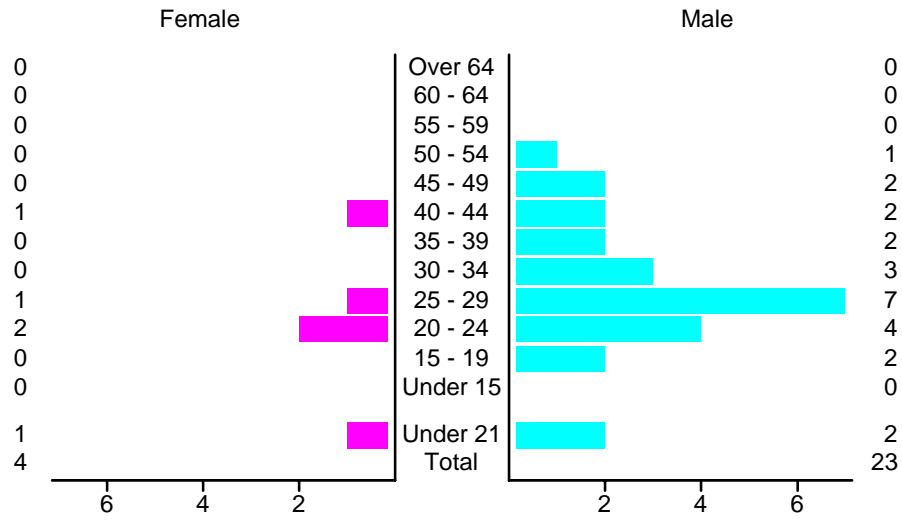
### People in Alcohol-Involved Crashes in Navajo, 2005 by Age and Sex



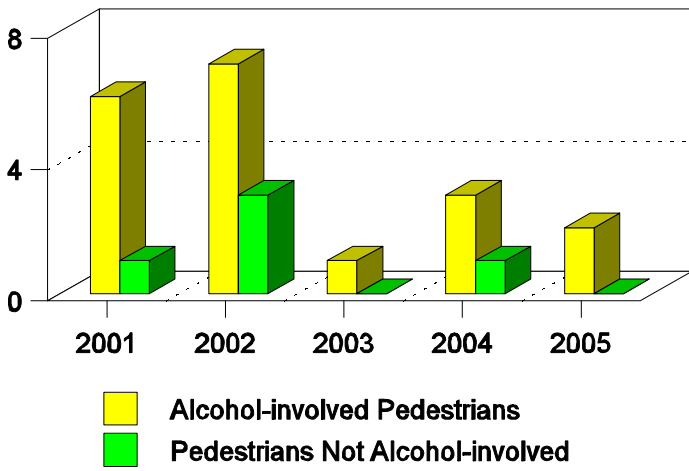
### Drivers in Crashes by Age and Sex in Navajo, 2005



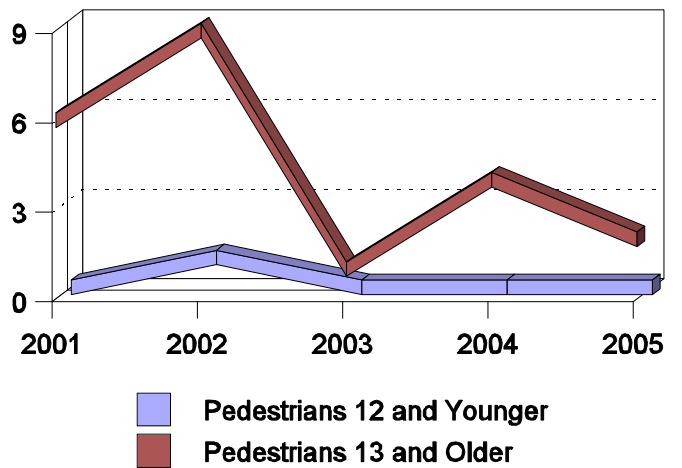
### Alcohol-Involved Drivers in Crashes in Navajo, 2005 by Age and Sex



### Pedestrians in Crashes in Navajo by Pedestrian Alcohol-involvement



### Pedestrian in Crashes in Navajo by Age Group



**'Teenagers' and Young Adults in Crashes in Navajo by Vehicle Type, 2005**

Vehicle	'Teenage' Drivers			Young Adult Drivers		
	Total	Fatal	Injury	Total	Fatal	Injury
Passenger car	10	0	4	15	1	5
Pickup	7	1	1	11	1	5
Pedestrian	0	0	0	1	1	0
Van/4 WD	3	0	2	8	0	4
<b>Total</b>	<b>20</b>	<b>1</b>	<b>7</b>	<b>35</b>	<b>3</b>	<b>14</b>

**'Teenagers' and Young Adults Killed and Injured in Crashes by Year in Navajo, 1996-2005**

Year	'Teenagers'				Young Adults			
	All Crashes		Alcohol Crashes		All Crashes		Alcohol Crashes	
	Killed	Injured	Killed	Injured	Killed	Injured	Killed	Injured
2005	2	12	0	3	1	18	0	3
2004	1	20	1	6	5	36	4	13
2003	0	13	0	1	2	5	2	2
2002	7	40	3	6	1	39	1	12
2001	5	23	3	8	5	28	5	11
2000	5	47	1	13	3	36	3	11
1999	4	36	1	13	3	20	2	11
1998	2	37	1	15	1	41	1	12
1997	1	50	0	23	5	41	4	21
1996	5	74	4	38	4	66	4	37