

# Raton Community Report, 2005

## Demographics

In 2005, there were 6,195 licensed drivers in Raton. Of these, there were 3,166 females and 3,029 males. The population of Raton was 6,944. The total number of crashes in 2005 was 219, yielding a crash rate of 32 per thousand people (total number of crashes 219 divided by total population 6,944 times 1,000). The corresponding rate for the state was 25 per thousand people.

## General Crash Information

Since 1996 the number of crashes has shown no consistent pattern. Fatal and injury crashes have also shown no consistent pattern since 1996. Belt usage (as a percentage) has increased from last year, while belt usage in crashes involving visible and incapacitating injuries decreased. There were no fatalities in the seven intersections with the most crashes in 2005. Of these intersections, six involve 2<sup>nd</sup> Street.

## Alcohol-related Crash Information

Information about alcohol-involved crashes is included in all sections of this report. Of the 30 people convicted of DWI in Raton, 53 percent were first-time DWI convictions (number of first convictions 16 divided by the total number of people convicted 30 times 100). The corresponding percent for the state is 61.

## Crash Specifics

Crashes involving other vehicles were the most common class, accounting for 58 percent of all crashes. A crash involving a pedestrian resulted in a fatality. Passenger cars were the vehicle type most often involved in crashes, accounting for 52 percent of all vehicles in crashes. Pickups accounted for 24 percent of vehicles involved in crashes. Together these two vehicle types comprised 72 percent of the vehicles involved in injury crashes. The three most common top contributing factors were driver inattention, improper backing, and excessive speed. There was one fatal crash in 2005. The top contributing factor for the fatal crash was alcohol involvement.

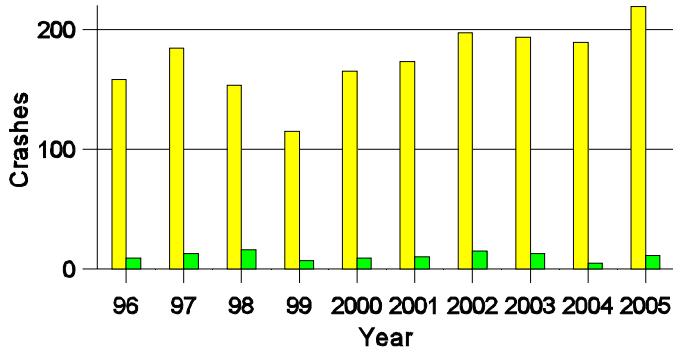
## People in Crashes

Overall, males were 52 percent of drivers in crashes, although they account for only 49 percent of licensed drivers in Raton. Four pedestrians were involved in crashes. In 2005, no 'teenagers' or young adults were killed in crashes in Raton. Statewide 17 percent of alcohol-involved drivers were under 21; in Raton none were under 21.

**Note:** The 1999 crash file contains 15% fewer crashes than the 1998 file. This may be due to problems implementing the new system after the old system failed, or to under reporting. Care should be used in interpreting differences between 1999 and other years in this report.

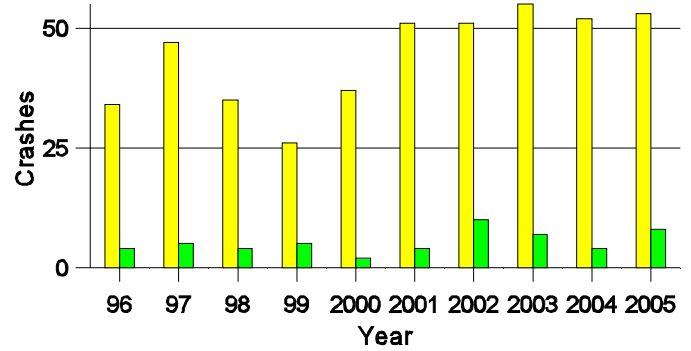
- Location of arrest/conviction was determined by police agency/court location, not driver residence.
- Crashes and drivers were counted by the city of occurrence/residence.
- Population was counted according to the Census definition.  
The city population data is from the most current 2005 estimates.
- Young adults are people between the ages of 20 and 24.
- 'Teenagers' are people between the ages of 15 and 19.
- Tables only include variable values for which there are data.

**Crashes in Raton  
by Alcohol Involvement**



■ All Crashes  
■ Alcohol-involved Crashes

**Fatal and Injury Crashes in Raton  
by Alcohol Involvement**



■ All Fatal and Injury Crashes  
■ Alcohol-involved Fatal and Injury Crashes

**Passenger Vehicle Seatbelt Usage and Injuries in Raton, 2003-2005**

Injury Level	2005		2004		2003	
	Total	No Belt	Total	No Belt	Total	No Belt
Killed	0	0	0	0	1	1
Incapacitating injury	8	1	9	1	5	1
Visible injury	11	2	10	0	16	1
Complaint of injury	42	0	39	1	64	7
Unhurt	421	1	367	11	312	2
<b>Total</b>	<b>482</b>	<b>4</b>	<b>425</b>	<b>13</b>	<b>398</b>	<b>12</b>

**The Seven Intersections in Raton with the Most Crashes, 2005**

Intersection	Crashes			People	
	Total	Fatal	Injury	Killed	Injured
1st St @ 2nd St	4	0	2	0	2
2nd St @ Cook Ave	3	0	1	0	1
2nd St @ Galisteo Ave	3	0	2	0	4
2nd St @ Grant Ave	5	0	1	0	3
2nd St @ Hart Ave	5	0	1	0	2
2nd St @ Tiger Dr	3	0	1	0	2
3rd St @ Park Ave	3	0	1	0	1

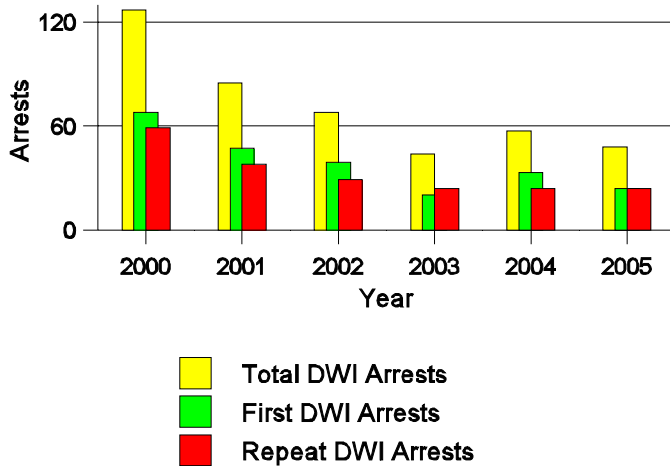
**Lifetime DWI Convictions for Drivers  
Convicted of DWI Violations in Raton, 2005**

Convictions	Since 2000	Since 1981
1st	25	16
2nd	5	9
3rd	0	2
4th	0	3
5th	0	0
6th	0	0
7th	0	0
8th	0	0
9th	0	0
10 or more	0	0
<b>Total</b>	<b>30</b>	<b>30</b>

Convictions are counts of people convicted of DWI by 7/2006 for violations in 2005 in Raton.  
Convictions are not comparable to arrests.

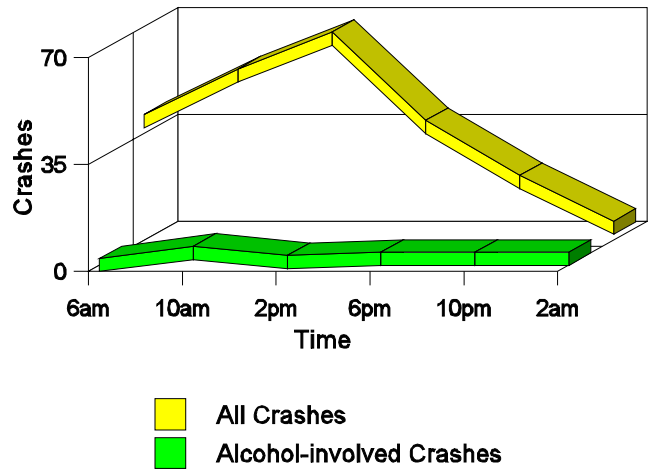
**DWI Arrests in Raton**

Showing First Arrests and Repeat Offenders



**Crashes in Raton**

by Hour and Alcohol Involvement



**Crashes in Raton by Class, 2005**

Class	Crashes				People		
	Total	% of Total	Fatal	% of Fatal	Injury	Killed	Injured
Other vehicle	126	58	0	0	31	0	47
Pedestrian	4	2	1	100	3	1	3
Fixed object	36	16	0	0	9	0	12
Parked vehicle	31	14	0	0	2	0	2
Overturn	8	4	0	0	3	0	4
Other non-collision	2	1	0	0	0	0	0
Pedalcyclist	4	2	0	0	4	0	4
Animal	7	3	0	0	0	0	0
Other object	1	0	0	0	0	0	0
<b>Total</b>	<b>219</b>	<b>100</b>	<b>1</b>	<b>100</b>	<b>52</b>	<b>1</b>	<b>72</b>

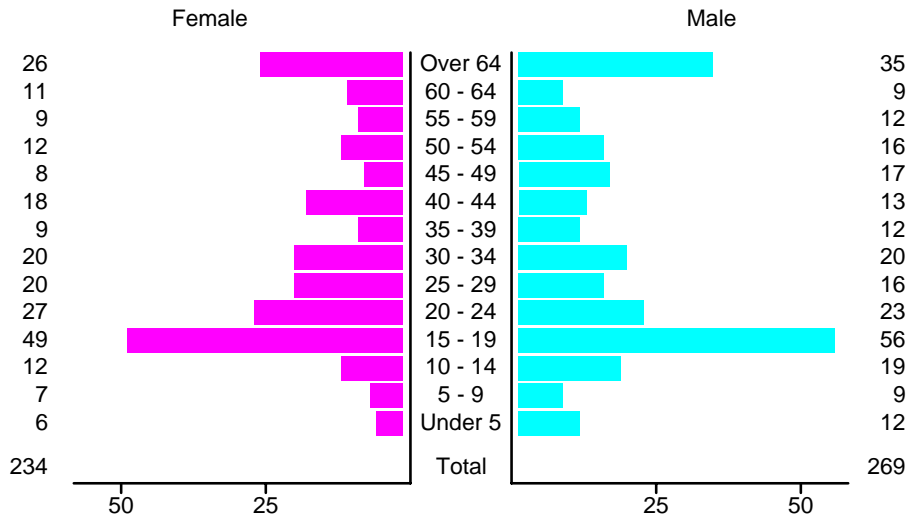
### Crashes in Raton by Vehicle Type, 2005

Vehicle Type	Vehicles					People	
	Total	% of Total	Fatal	% of Fatal	Injury	Killed	Injured
Passenger car	204	52	0	0	47	0	40
Pickup	93	24	1	50	22	0	10
Semi	5	1	0	0	0	0	0
Bus	1	0	0	0	0	0	0
Motorcycle	4	1	0	0	3	0	3
Pedalcyclist	4	1	0	0	4	0	4
Pedestrian	4	1	1	50	3	1	3
Van/4 WD	52	13	0	0	14	0	11
Other	1	0	0	0	0	0	0
Unknown	22	6	0	0	3	0	1
<b>Total</b>	<b>390</b>	<b>100</b>	<b>2</b>	<b>100</b>	<b>96</b>	<b>1</b>	<b>72</b>

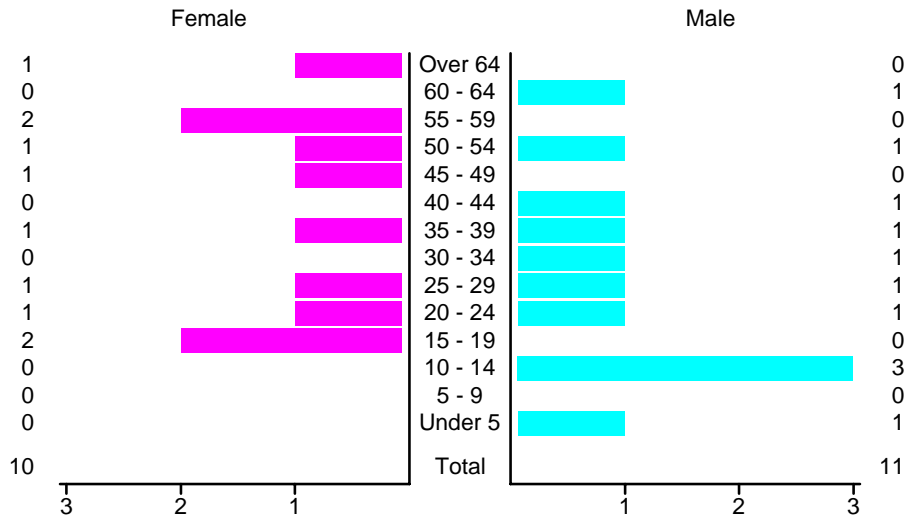
### Crashes in Raton by Top Contributing Factor, 2005

Contributing Factor	Crashes					People	
	Total	% of Total	Fatal	% of Fatal	Injury	Killed	Injured
Alcohol involvement	11	5	1	100	7	1	7
Red light running	17	8	0	0	6	0	7
Failing to yield	22	10	0	0	10	0	19
Excessive speed	24	11	0	0	5	0	9
Driving left of center	3	1	0	0	1	0	3
Following too close	18	8	0	0	3	0	3
Improper turning	10	5	0	0	2	0	3
Improper overtaking	3	1	0	0	1	0	1
Improper backing	30	14	0	0	2	0	2
Mechanical defect	7	3	0	0	1	0	1
Driver inattention	42	19	0	0	8	0	10
Other	32	15	0	0	6	0	7
<b>Total</b>	<b>219</b>	<b>100</b>	<b>1</b>	<b>100</b>	<b>52</b>	<b>1</b>	<b>72</b>

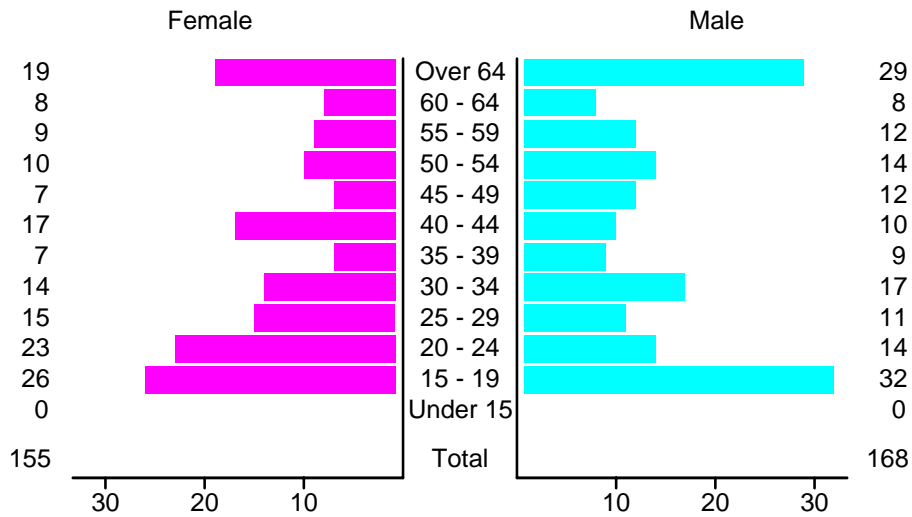
### People in Crashes by Age and Sex in Raton, 2005



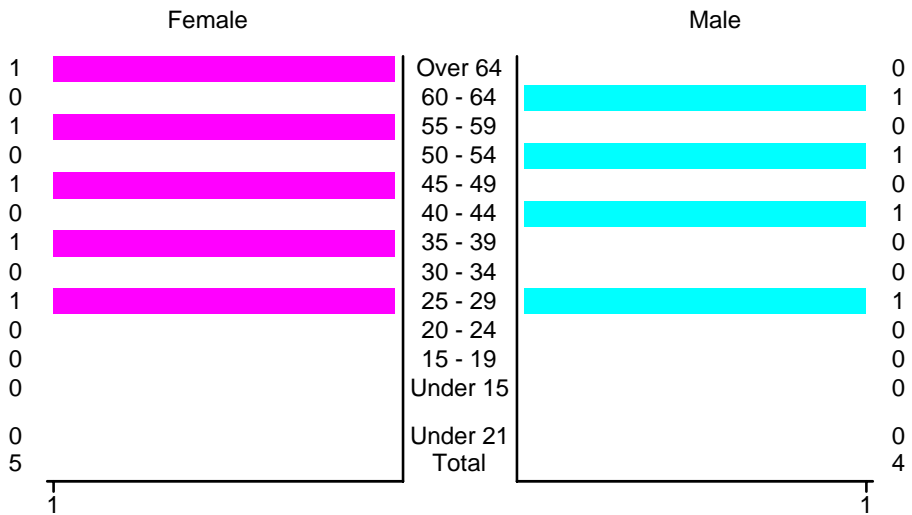
### People in Alcohol-Involved Crashes in Raton by Age and Sex, 2005



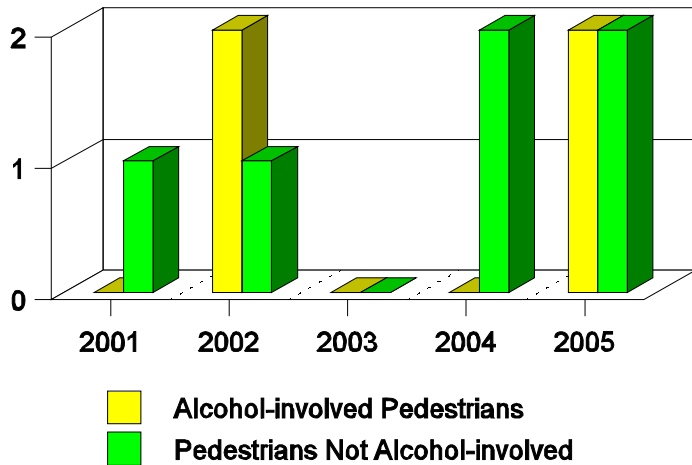
### Drivers in Crashes by Age and Sex in Raton, 2005



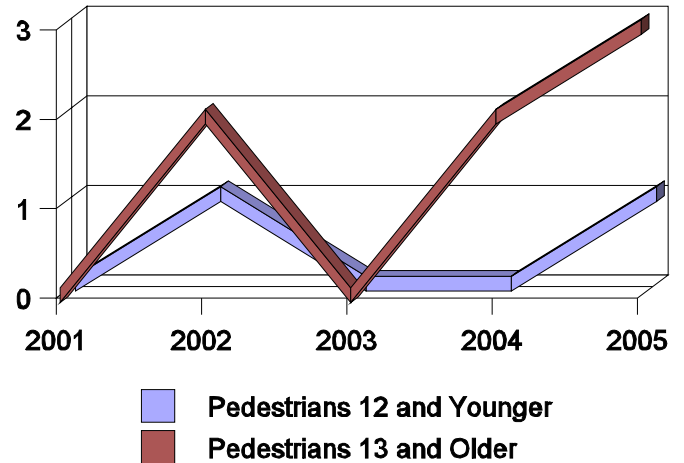
### Alcohol-Involved Drivers in Crashes in Raton by Age and Sex, 2005



**Pedestrian in Crashes in Raton  
by Pedestrian Alcohol-involvement**



**Pedestrian in Crashes in Raton  
by Age Group**



**'Teenagers' and Young Adults in Crashes in Raton by Vehicle Type, 2005**

Vehicle	'Teenage' Drivers			Young Adult Drivers		
	Total	Fatal	Injury	Total	Fatal	Injury
Passenger car	43	0	3	26	0	10
Pickup	7	0	2	4	0	2
Motorcycle	1	0	1	0	0	0
Pedestrian	0	0	0	1	0	1
Van/4 WD	7	0	3	6	0	0
Unknown	0	0	0	1	0	0
<b>Total</b>	<b>58</b>	<b>0</b>	<b>9</b>	<b>38</b>	<b>0</b>	<b>13</b>

**'Teenagers' and Young Adults Killed and Injured in Crashes by Year in Raton, 1996-2005**

Year	'Teenagers'				Young Adults			
	All Crashes		Alcohol Crashes		All Crashes		Alcohol Crashes	
	Killed	Injured	Killed	Injured	Killed	Injured	Killed	Injured
2005	0	10	0	0	0	9	0	0
2004	0	14	0	3	0	9	0	0
2003	1	15	1	4	0	13	0	1
2002	0	13	0	1	0	9	0	5
2001	0	7	0	3	0	10	0	2
2000	0	11	0	1	0	3	0	0
1999	0	10	0	2	0	3	0	0
1998	0	5	0	0	0	5	0	1
1997	0	19	0	0	0	5	0	1
1996	0	11	0	0	0	8	0	1