

Rio Rancho Community Report, 2005

Demographics

In 2005, there were 48,532 licensed drivers in Rio Rancho. Of these, there were 24,786 females and 23,746 males. The population of Rio Rancho was 66,599. The total number of crashes in 2005 was 1,187, yielding a crash rate of 18 per thousand people (total number of crashes 1,187 divided by total population 66,599 times 1,000). The corresponding rate for the state was 25 per thousand people.

General Crash Information

Since 1996 the number of crashes has shown no consistent pattern. Fatal and injury crashes have also shown no consistent pattern since 1996. Belt usage (as a percentage) has decreased from last year, while belt usage in crashes involving visible and incapacitating injuries has increased. There were no fatalities in the seven intersections with the most crashes in 2005. Of these intersections, six involve Rio Rancho Drive.

Alcohol-related Crash Information

Information about alcohol-involved crashes is included in all sections of this report. Of the 126 people convicted of DWI in Rio Rancho, 66 percent were first-time DWI convictions (number of first convictions 83 divided by the total number of people convicted 126 times 100). The corresponding percent for the state is 61.

Crash Specifics

Crashes involving other vehicles were the most common class, accounting for 76 percent of all crashes. Crashes involving other vehicles and pedestrians were the most common crash classes which resulted in fatalities. Passenger cars were the vehicle type most often involved in crashes, accounting for 52 percent of all vehicles in crashes. Pickups accounted for 20 percent of vehicles involved in crashes. Together these two vehicle types comprised 73 percent of the vehicles involved in injury crashes. The three most common top contributing factors were following too close, driver inattention, and failing to yield. There were seven fatal crashes in 2005.

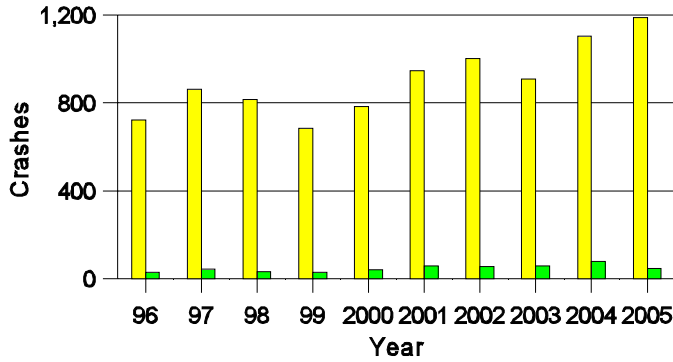
People in Crashes

Overall, males were 53 percent of drivers in crashes, although they account for only 49 percent of licensed drivers in Rio Rancho. More pedestrians were in crashes than last year. No 'teenagers' and one young adult were killed in crashes in 2005. Statewide 17 percent of alcohol-involved drivers were under 21; in Rio Rancho 16 percent were under 21.

Note: The 1999 crash file contains 15% fewer crashes than the 1998 file. This may be due to problems implementing the new system after the old system failed, or to under reporting. Care should be used in interpreting differences between 1999 and other years in this report.

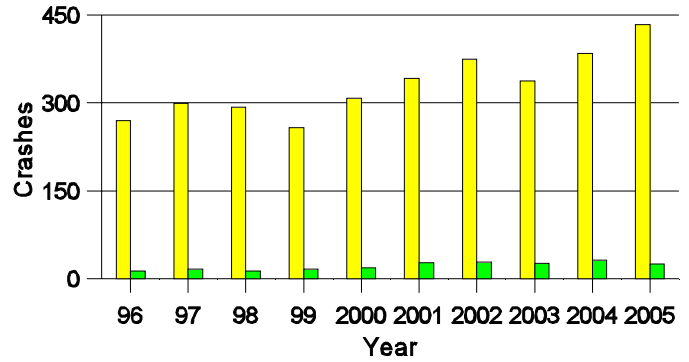
- Location of arrest/conviction was determined by police agency/court location, not driver residence.
- Crashes and drivers were counted by the city of occurrence/residence.
- Population was counted according to the Census definition. The city population data is from the most current 2005 estimates.
- Young adults are people between the ages of 20 and 24.
- 'Teenagers' are people between the ages of 15 and 19.
- Tables only include variable values for which there are data.

Crashes in Rio Rancho by Alcohol Involvement



■ All Crashes
■ Alcohol-involved Crashes

Fatal and Injury Crashes in Rio Rancho by Alcohol Involvement



■ All Fatal and Injury Crashes
■ Alcohol-involved Fatal and Injury Crashes

Passenger Vehicle Seatbelt Usage and Injuries in Rio Rancho, 2003-2005

Injury Level	2005		2004		2003	
	Total	No Belt	Total	No Belt	Total	No Belt
Killed	3	1	0	0	3	2
Incapacitating injury	52	2	40	5	47	5
Visible injury	70	5	94	3	79	4
Complaint of injury	457	6	355	3	305	5
Unhurt	2,328	16	2,172	12	1,669	6
Total	2,910	30	2,661	23	2,103	22

The Seven Intersections in Rio Rancho with the Most Crashes, 2005

Intersection	Crashes			People	
	Total	Fatal	Injury	Killed	Injured
Eastlake Dr @ Rio Rancho Dr	22	0	8	0	11
Frontage Rd @ Rio Rancho Dr	22	0	10	0	21
Golf Course Rd @ Southern Blvd	22	0	7	0	8
Ridgecrest Dr @ Rio Rancho Dr	25	0	5	0	6
Rio Rancho Dr @ Sabana Grande Ave	45	0	18	0	33
Rio Rancho Dr @ Sara Rd	35	0	14	0	22
Rio Rancho Dr @ Southern Blvd	54	0	20	0	30

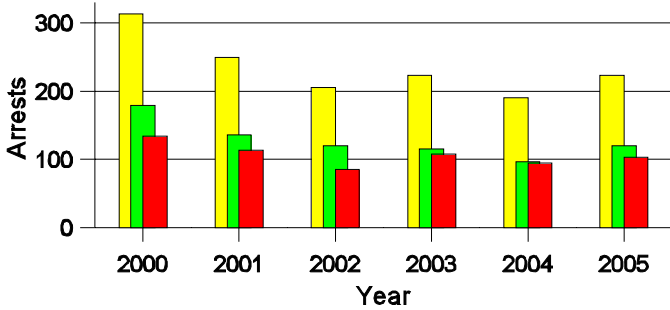
**Lifetime DWI Convictions for Drivers
Convicted of DWI Violations in Rio Rancho, 2005**

Convictions	Since 2000	Since 1981
1st	106	83
2nd	18	27
3rd	1	10
4th	1	3
5th	0	0
6th	0	1
7th	0	2
8th	0	0
9th	0	0
10 or more	0	0
Total	126	126

Convictions are counts of people convicted of DWI by 7/2006 for violations in 2005 in Rio Rancho.
Convictions are not comparable to arrests.

DWI Arrests in Rio Rancho

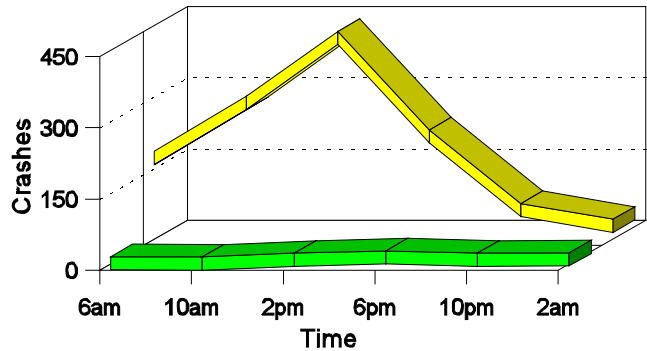
Showing First Arrests and Repeat Offenders



- Total DWI Arrests
- First DWI Arrests
- Repeat DWI Arrests

Crashes in Rio Rancho

by Hour and Alcohol Involvement



- All Crashes
- Alcohol-involved Crashes

Crashes in Rio Rancho by Class, 2005

Class	Crashes				People		
	Total	% of Total	Fatal	% of Fatal	Injury	Killed	Injured
Other vehicle	903	76	3	43	346	3	576
Pedestrian	8	1	2	29	6	2	7
Fixed object	118	10	0	0	37	0	39
Veh. on other roadway	2	0	0	0	1	0	1
Parked vehicle	95	8	0	0	3	0	3
Overturn	39	3	1	14	25	1	40
Other non-collision	6	1	0	0	2	0	2
Pedalcyclist	10	1	1	14	7	1	7
Animal	4	0	0	0	0	0	0
Other object	2	0	0	0	0	0	0
Total	1,187	100	7	100	427	7	675

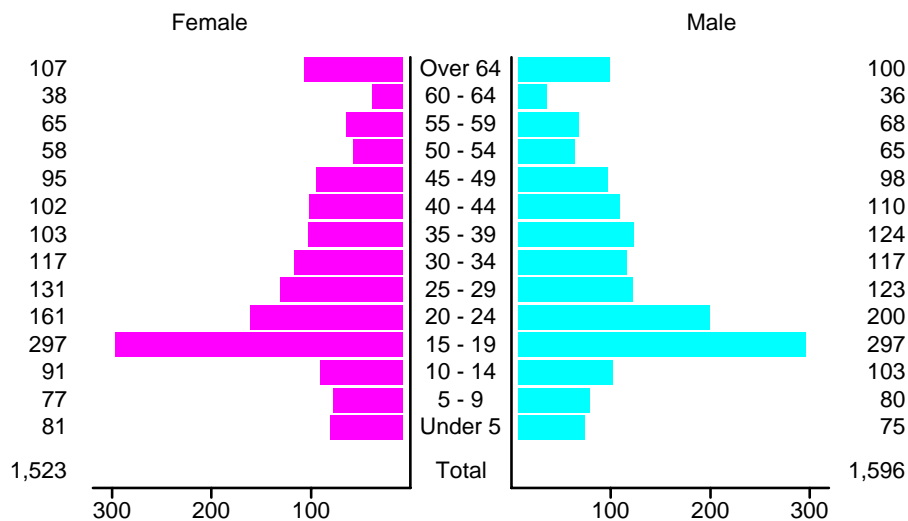
Crashes in Rio Rancho by Vehicle Type, 2005

Vehicle Type	Vehicles					People	
	Total	% of Total	Fatal	% of Fatal	Injury	Killed	Injured
Passenger car	1,225	52	7	41	476	3	384
Pickup	478	20	2	12	175	0	108
Semi	41	2	2	12	10	1	2
Bus	4	0	0	0	0	0	0
Motorcycle	22	1	0	0	18	0	18
Pedalcyclist	10	0	1	6	7	1	7
Pedestrian	9	0	2	12	7	2	7
Van/4 WD	443	19	2	12	168	0	131
Other	13	1	0	0	5	0	5
Unknown	96	4	1	6	20	0	13
Total	2,341	100	17	100	886	7	675

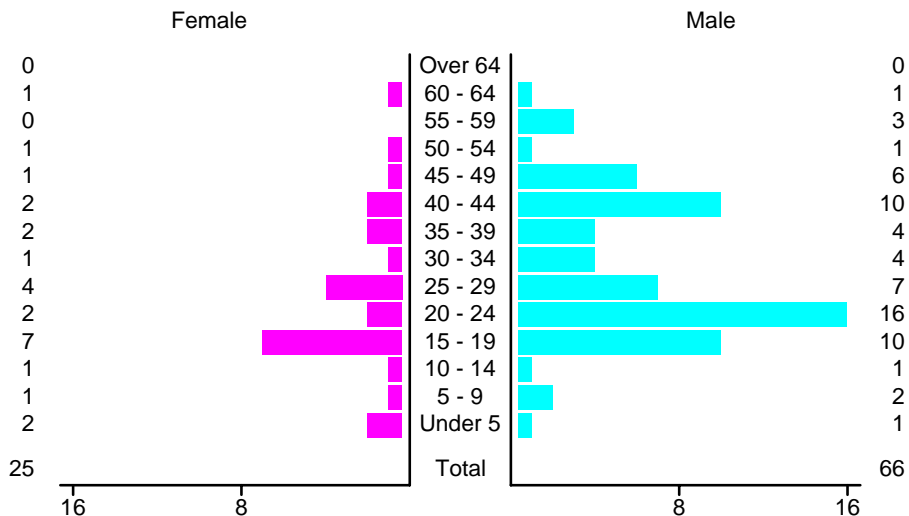
Crashes in Rio Rancho by Top Contributing Factor, 2005

Contributing Factor	Crashes					People	
	Total	% of Total	Fatal	% of Fatal	Injury	Killed	Injured
Alcohol involvement	48	4	1	14	25	1	35
Red light running	76	6	1	14	35	1	54
Failing to yield	186	16	1	14	80	1	137
Excessive speed	94	8	0	0	40	0	67
Driving left of center	16	1	0	0	2	0	2
Following too close	290	24	0	0	114	0	186
Improper turning	27	2	0	0	7	0	14
Improper overtaking	10	1	0	0	1	0	1
Improper backing	56	5	0	0	2	0	3
Inop. traffic control	5	0	0	0	1	0	1
Mechanical defect	18	2	1	14	7	1	9
Driver inattention	282	24	0	0	95	0	146
Improper driving	2	0	1	14	1	1	1
Other	77	6	2	29	17	2	19
Total	1,187	100	7	100	427	7	675

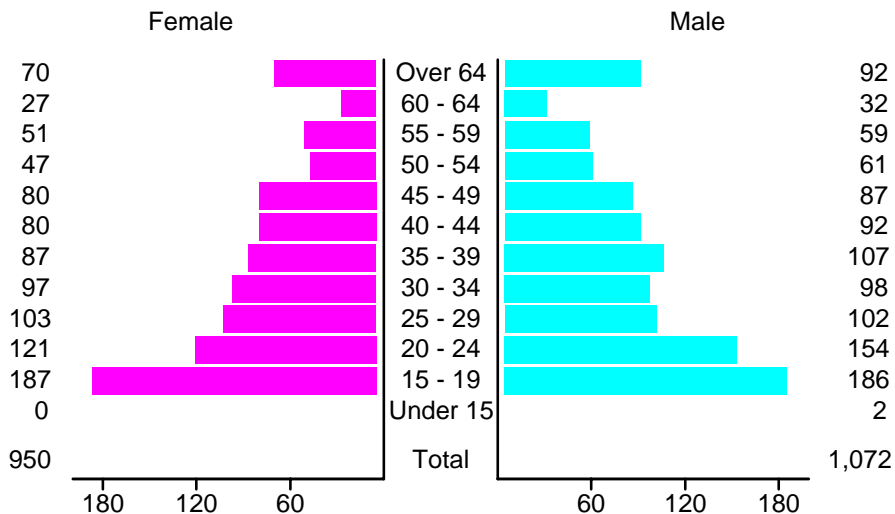
People in Crashes by Age and Sex in Rio Rancho, 2005



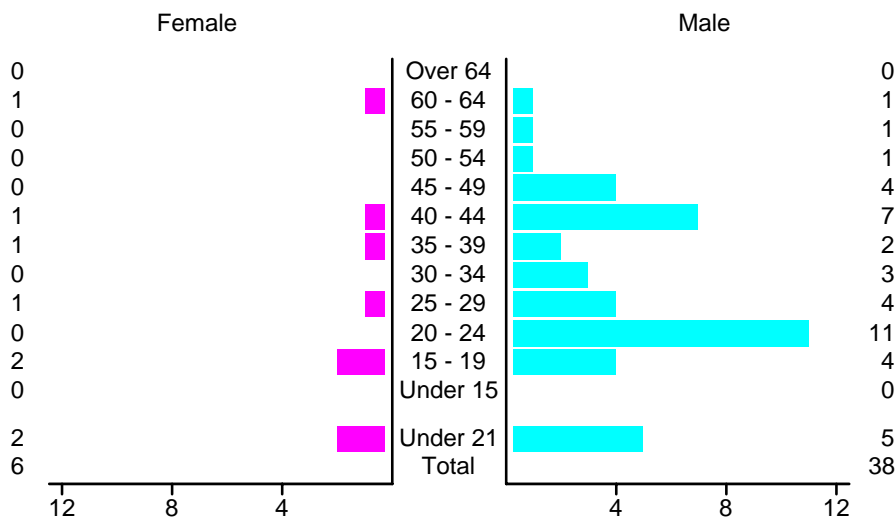
People in Alcohol-Involved Crashes in Rio Rancho, 2005 by Age and Sex



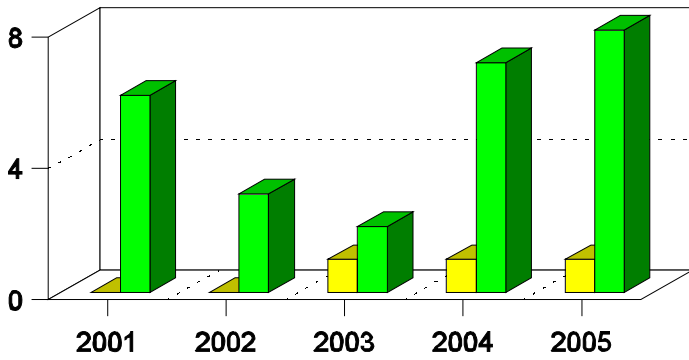
Drivers in Crashes by Age and Sex in Rio Rancho, 2005



Alcohol-Involved Drivers in Crashes in Rio Rancho, 2005 by Age and Sex

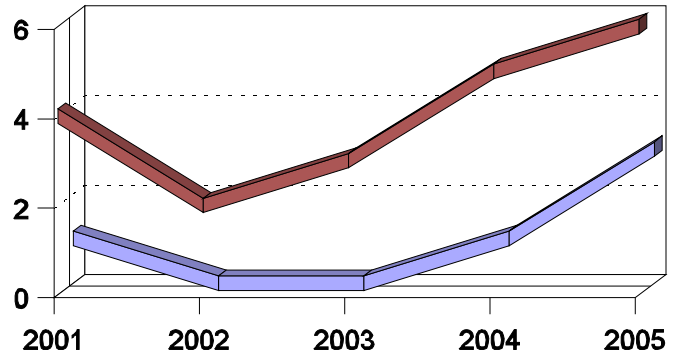


**Pedestrian in Crashes in Rio Rancho
by Pedestrian Alcohol-involvement**



■ Alcohol-involved Pedestrians
■ Pedestrians Not Alcohol-involved

**Pedestrian in Crashes in Rio Rancho
by Age Group**



■ Pedestrians 12 and Younger
■ Pedestrians 13 and Older

'Teenagers' and Young Adults in Crashes in Rio Rancho by Vehicle Type, 2005

Vehicle	'Teenage' Drivers			Young Adult Drivers		
	Total	Fatal	Injury	Total	Fatal	Injury
Passenger car	267	0	101	168	1	72
Pickup	51	0	25	64	0	24
Semi	1	0	0	6	0	0
Motorcycle	3	0	3	2	0	2
Pedalcyclist	2	0	2	0	0	0
Pedestrian	1	1	0	1	0	1
Van/4 WD	47	0	21	32	0	13
Other	0	0	0	1	0	0
Unknown	4	0	1	2	0	1
Total	376	1	153	276	1	113

'Teenagers' and Young Adults Killed and Injured in Crashes by Year in Rio Rancho, 1996-2005

Year	'Teenagers'				Young Adults			
	All Crashes		Alcohol Crashes		All Crashes		Alcohol Crashes	
	Killed	Injured	Killed	Injured	Killed	Injured	Killed	Injured
2005	0	126	0	9	1	72	1	5
2004	0	121	0	10	0	64	0	11
2003	1	107	0	3	4	52	1	11
2002	1	105	1	4	1	57	1	8
2001	0	93	0	6	0	50	0	5
2000	1	112	1	5	1	40	1	2
1999	1	69	0	3	1	41	1	2
1998	0	87	0	2	0	41	0	5
1997	0	73	0	2	0	49	0	2
1996	0	90	0	8	1	35	1	4