

Harding County Report, 2006

Demographics

In 2006, there were 612 licensed drivers in Harding County. Of these, there were 288 females and 324 males. The population in Harding County was 718. The total number of crashes in 2006 was 12, yielding a crash rate of 17 per thousand people (the total number of crashes 12 divided by the population 718 multiplied by 1,000). The corresponding rate for the state was 25 per thousand people.

General Crash Information

Since 1997 the number of crashes has shown no consistent pattern. Fatal and injury crashes have also shown no consistent pattern since 1997. Belt usage (as a percentage) has decreased from last year, while belt usage in crashes involving visible and incapacitating injuries has also decreased.

Alcohol-related Crash Information

Information about alcohol-involved crashes is included in all sections of this report. Three out of the five people convicted for DWI were convicted for the first time. The corresponding percentage of first time DWIs for the state was 68 percent. The only alcohol-related crash involved one person, a female between the ages of 21 and 24.

Crash Specifics

Crashes involving animals were the most common class, accounting for 75 percent of all crashes. Pickups were the vehicle type most often involved in crashes, accounting for 50 percent of all vehicles in crashes. The most common top contributing factor was 'other'. There were no fatal crashes in 2006.

People in Crashes

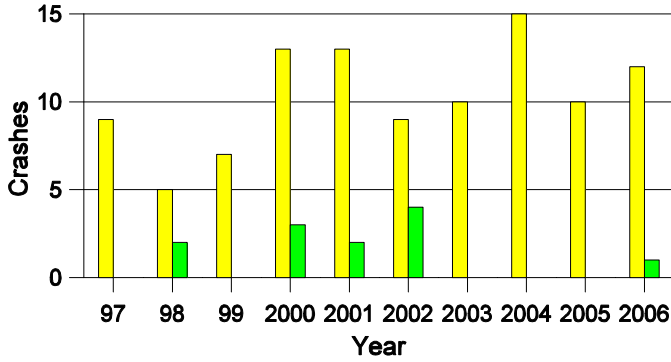
Overall, males were 82 percent of drivers in crashes, although they account for 53 percent of licensed drivers in Harding County. There was one alcohol-involved crash and the only driver was a female between the age of 21 and 24. In the last four years, there have been no pedestrians involved in crashes. In 2006, no 'teenagers' and no young adults were killed in crashes in Harding County.

Note: The 1999 crash file contains 15% fewer crashes than the 1998 file. This may be due to problems implementing the new system after the old system failed, or to under reporting. Care should be used in interpreting differences between 1999 and other years in this report.

| | |
|---|---|
| # | Location of arrest/conviction was determined by police agency/court location, not driver residence. |
| # | Crashes and drivers were counted by the city of occurrence/residence. |
| # | Population was counted according to the Census definition, using 2006 estimates. |
| # | Young adults are people between the ages of 20 and 24. |
| # | 'Teenagers' are people between the ages of 15 and 19. |
| # | Tables only include variable values for which there are data. |

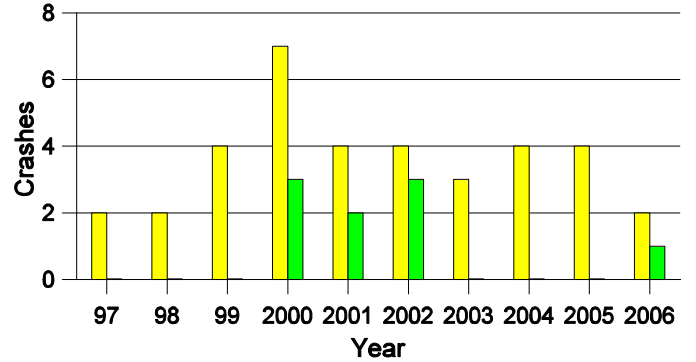
Crashes in Harding County

by Alcohol Involvement



Fatal and Injury Crashes in Harding County

by Alcohol Involvement



Passenger Vehicle Seatbelt Usage and Injuries in Harding County, 2004-2006

| Injury Level | 2006 | | 2005 | | 2004 | |
|-----------------------|-----------|----------|-----------|----------|----------|----------|
| | Total | No Belt | Total | No Belt | Total | No Belt |
| Killed | 0 | 0 | 0 | 0 | 0 | 0 |
| Incapacitating injury | 1 | 0 | 0 | 0 | 0 | 0 |
| Visible injury | 3 | 1 | 0 | 0 | 0 | 0 |
| Complaint of injury | 1 | 0 | 3 | 0 | 0 | 0 |
| Unhurt | 10 | 0 | 16 | 1 | 0 | 0 |
| Total | 15 | 1 | 19 | 1 | 0 | 0 |

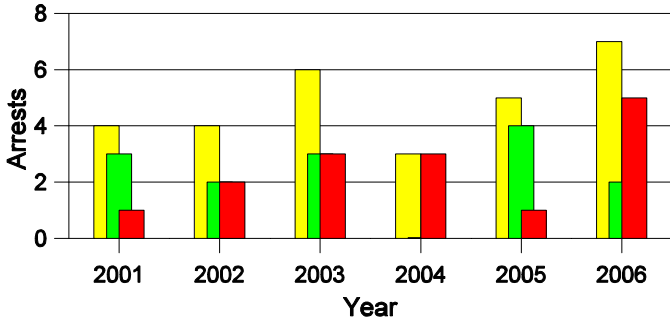
Lifetime DWI Convictions for Drivers Convicted of DWI Violations in Harding County, 2006

| Convictions | Since 2002 | Since 1982 |
|--------------|------------|------------|
| 1st | 5 | 3 |
| 2nd | 0 | 1 |
| 3rd | 0 | 0 |
| 4th | 0 | 1 |
| 5th | 0 | 0 |
| 6th | 0 | 0 |
| 7th | 0 | 0 |
| 8th | 0 | 0 |
| 9th | 0 | 0 |
| 10 or more | 0 | 0 |
| Total | 5 | 5 |

Convictions are counts of people convicted of DWI by 7/2007 for violations in 2006 in Harding County. Convictions are not comparable to arrests.

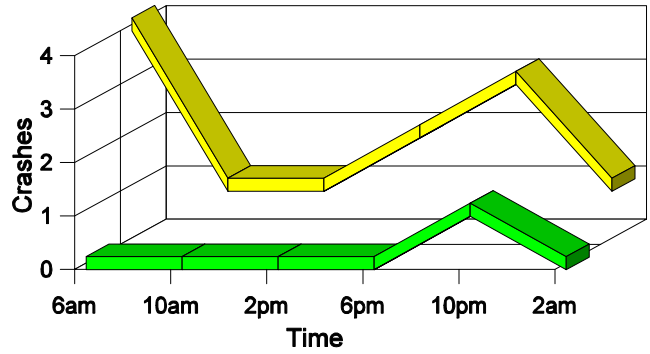
DWI Arrests in Harding County

Showing First Arrests and Repeat Offenders



Crashes in Harding County

by Hour and Alcohol Involvement



Crashes in Harding County by Class, 2006

| Class | Crashes | | | | | People | |
|---------------------|-----------|------------|----------|------------|----------|----------|----------|
| | Total | % of Total | Fatal | % of Fatal | Injury | Killed | Injured |
| Fixed object | 1 | 8 | 0 | 0 | 1 | 0 | 1 |
| Overturn | 1 | 8 | 0 | 0 | 1 | 0 | 2 |
| Other non-collision | 1 | 8 | 0 | 0 | 0 | 0 | 0 |
| Animal | 9 | 75 | 0 | 0 | 0 | 0 | 0 |
| Total | 12 | 100 | 0 | 0 | 2 | 0 | 3 |

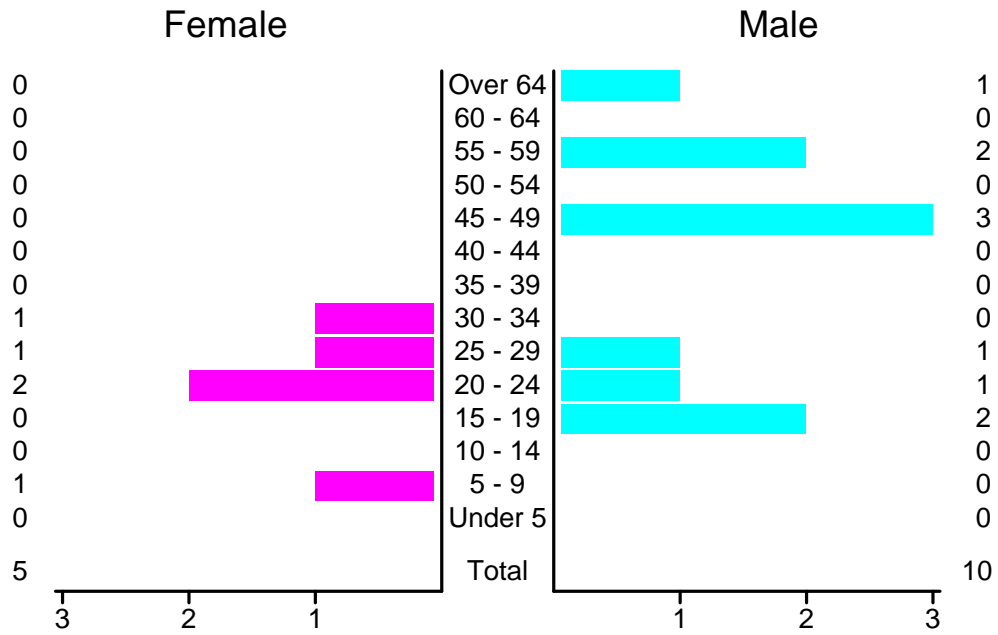
Crashes in Harding County by Vehicle Type, 2006

| Vehicle Type | Vehicles | | | | | People | |
|---------------|-----------|------------|----------|------------|----------|----------|----------|
| | Total | % of Total | Fatal | % of Fatal | Injury | Killed | Injured |
| Passenger car | 3 | 25 | 0 | 0 | 1 | 0 | 2 |
| Pickup | 6 | 50 | 0 | 0 | 0 | 0 | 0 |
| Van/4 WD | 3 | 25 | 0 | 0 | 1 | 0 | 1 |
| Total | 12 | 100 | 0 | 0 | 2 | 0 | 3 |

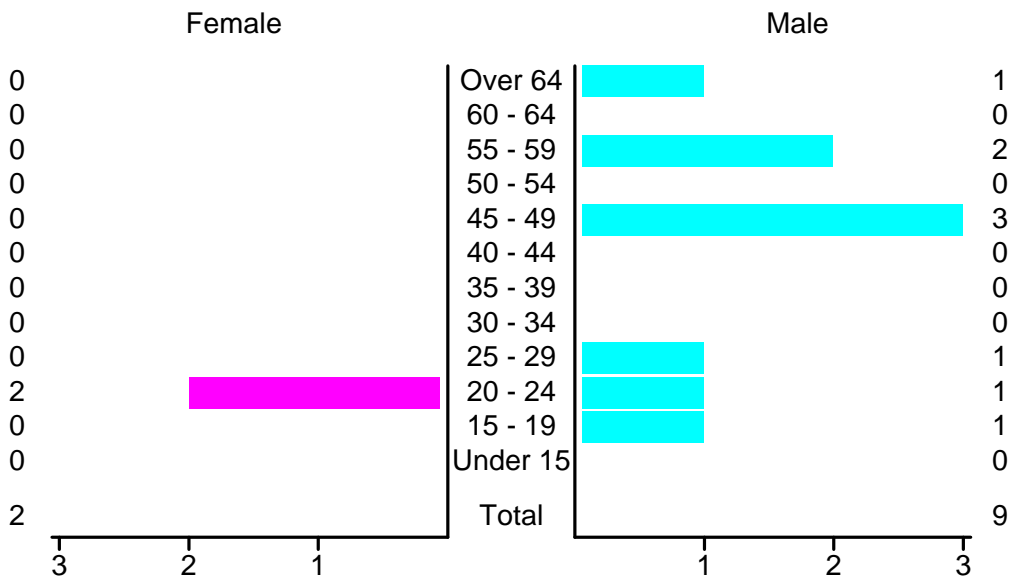
Crashes in Harding County by Top Contributing Factor, 2006

| Contributing Factor | Crashes | | | | | People | |
|---------------------|-----------|------------|----------|------------|----------|----------|----------|
| | Total | % of Total | Fatal | % of Fatal | Injury | Killed | Injured |
| Alcohol involvement | 1 | 8 | 0 | 0 | 1 | 0 | 1 |
| Excessive speed | 2 | 17 | 0 | 0 | 1 | 0 | 2 |
| Driver inattention | 1 | 8 | 0 | 0 | 0 | 0 | 0 |
| Other | 8 | 67 | 0 | 0 | 0 | 0 | 0 |
| Total | 12 | 100 | 0 | 0 | 2 | 0 | 3 |

People in Crashes by Age and Sex in Harding County, 2006



Drivers in Crashes by Age and Sex in Harding County, 2006



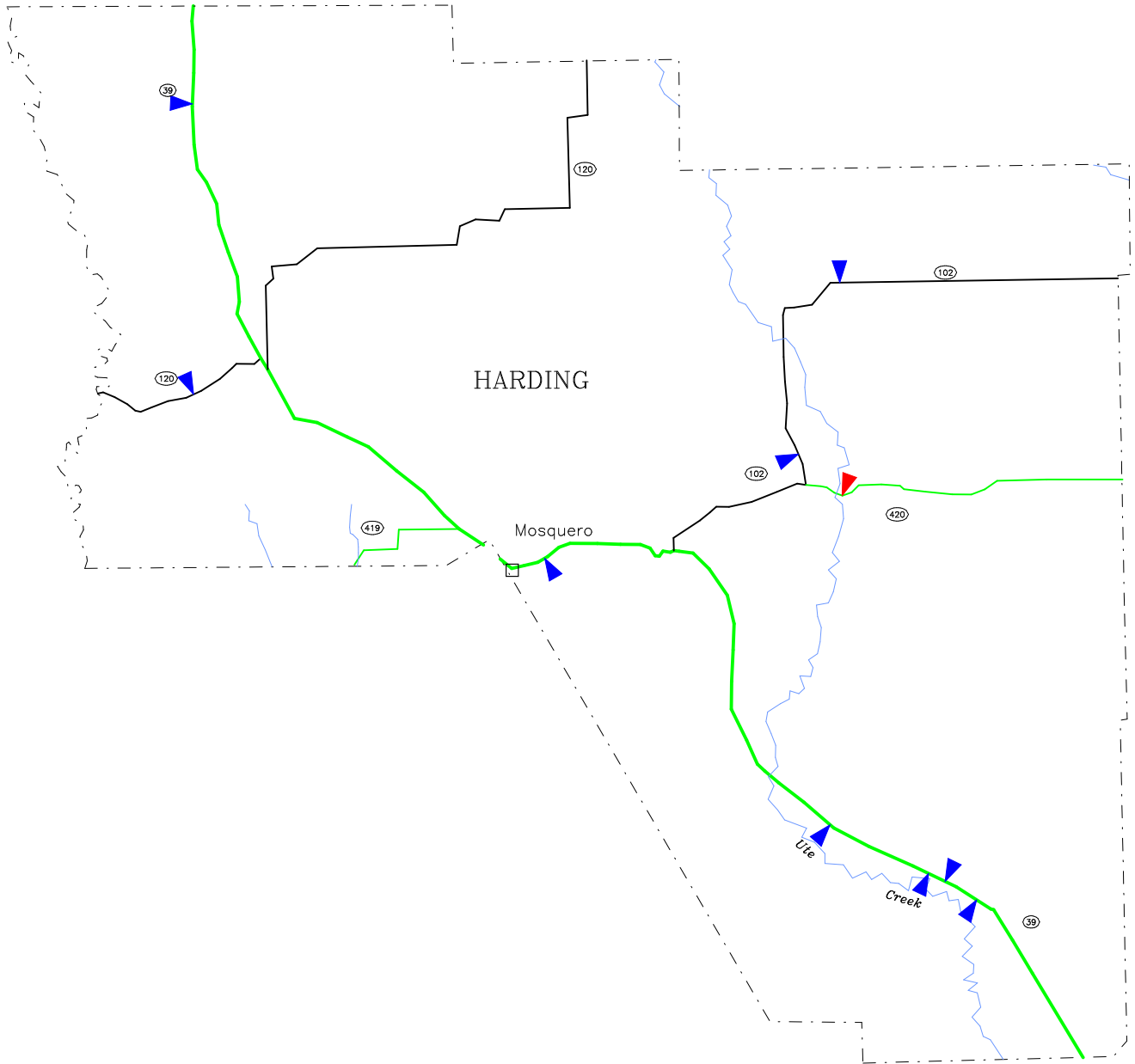
'Teenagers' and Young Adults in Crashes in Harding County by Vehicle Type, 2006

| Vehicle | 'Teenage' Drivers | | | Young Adult Drivers | | |
|---------------|-------------------|-------|--------|---------------------|-------|--------|
| | Total | Fatal | Injury | Total | Fatal | Injury |
| Passenger car | 1 | 0 | 1 | 1 | 0 | 0 |
| Pickup | 0 | 0 | 0 | 1 | 0 | 0 |
| Van/4 WD | 0 | 0 | 0 | 1 | 0 | 1 |
| Total | 1 | 0 | 1 | 3 | 0 | 1 |

'Teenagers' and Young Adults in Crashes in Harding County, 1997-2006

| Year | 'Teenagers' | | | | Young Adults | | | |
|------|-------------|---------|-----------------|---------|--------------|---------|-----------------|---------|
| | All Crashes | | Alcohol Crashes | | All Crashes | | Alcohol Crashes | |
| | Killed | Injured | Killed | Injured | Killed | Injured | Killed | Injured |
| 2006 | 0 | 2 | 0 | 0 | 0 | 1 | 0 | 1 |
| 2005 | 0 | 0 | 0 | 0 | 0 | 1 | 0 | 0 |
| 2004 | 0 | 0 | 0 | 0 | 0 | 2 | 0 | 0 |
| 2003 | 0 | 0 | 0 | 0 | 0 | 3 | 0 | 0 |
| 2002 | 1 | 0 | 1 | 0 | 0 | 1 | 0 | 0 |
| 2001 | 0 | 0 | 0 | 0 | 0 | 0 | 0 | 0 |
| 2000 | 0 | 2 | 0 | 0 | 1 | 1 | 1 | 0 |
| 1999 | 0 | 0 | 0 | 0 | 0 | 0 | 0 | 0 |
| 1998 | 0 | 3 | 0 | 0 | 0 | 0 | 0 | 0 |
| 1997 | 0 | 0 | 0 | 0 | 0 | 1 | 0 | 0 |

-- The Geographic Road Network Data Base --
2006 Harding County Crashes
 New Mexico State Highway System



| | | | |
|--|----------------------------|--|-----------------|
| | Alcohol Crash Location | | Railroad |
| | Non-Alcohol Crash Location | | River |
| | Interstate | | Lake |
| | Primary Roads | | National Forest |
| | Secondary Roads | | Reservation |
| | Other State Roads | | Urban Limit |



Prepared for the
New Mexico Traffic Safety Bureau
 New Mexico Department of Transportation
 Under Contract Number C04950

DIVISION OF GOVERNMENT RESEARCH

The University of New Mexico
<http://www.unm.edu/~dgrint>
 (505) 277-3305 02/25/08

