

Raton Community Report, 2006

Demographics

In 2006, there were 6,196 licensed drivers in Raton. Of these, there were 3,118 females and 3,077 males. The population of Raton was 6,781. The total number of crashes in 2006 was 154, yielding a crash rate of 23 per thousand people (total number of crashes 154 divided by total population 6,781 times 1,000). The corresponding rate for the state was 25 per thousand people.

General Crash Information

Since 1997 the number of crashes has shown no consistent pattern. Fatal and injury crashes have also shown no consistent pattern since 1997. Belt usage (as a percentage) has decreased from last year, while belt usage in crashes involving visible and incapacitating injuries increased. There were no fatalities in the seven intersections with the most crashes in 2006. Of these intersections, six involved 2nd Street.

Alcohol-related Crash Information

Information about alcohol-involved crashes is included in all sections of this report. Of the 28 people convicted of DWI in Raton, 46 percent were first-time DWI convictions (number of first convictions 13 divided by the total number of people convicted 28 times 100). The corresponding percent for the state is 68.

Crash Specifics

Crashes involving other vehicles were the most common class, accounting for 56 percent of all crashes. A crash involving another vehicle and one involving an overturn resulted in fatalities. Passenger cars were the vehicle type most often involved in crashes, accounting for 47 percent of all vehicles in crashes. Pickups accounted for 29 percent of vehicles involved in crashes. Together these two vehicle types comprised 76 percent of the vehicles involved in injury crashes. The two most common top contributing factors were driver inattention and improper backing. There were two fatal crashes in 2006. The top contributing factor for the fatal crashes was driver inattention.

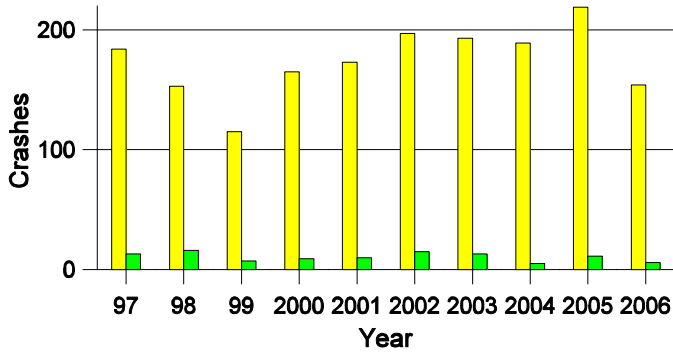
People in Crashes

Overall, males were 52 percent of drivers in crashes, although they account for only 50 percent of licensed drivers in Raton. Three pedestrians were involved in crashes. In 2006, no 'teenagers' or young adults were killed in crashes in Raton. Statewide 16 percent of alcohol-involved drivers were under 21; in Raton none were under 21.

Note: The 1999 crash file contains 15% fewer crashes than the 1998 file. This may be due to problems implementing the new system after the old system failed, or to under reporting. Care should be used in interpreting differences between 1999 and other years in this report.

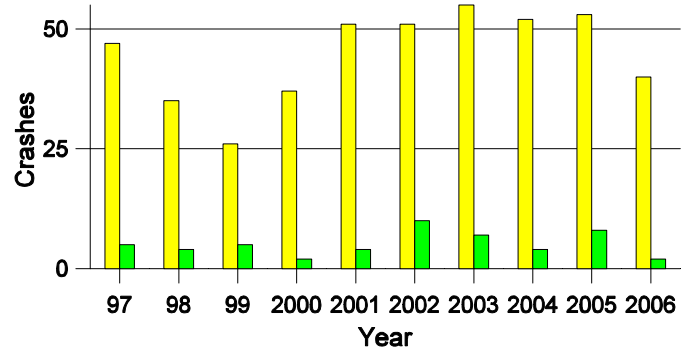
- | | |
|---|---|
| # | Location of arrest/conviction was determined by police agency/court location, not driver residence. |
| # | Crashes and drivers were counted by the city of occurrence/residence. |
| # | Population was counted according to the Census definition.
The city population data is from the most current 2006 estimates. |
| # | Young adults are people between the ages of 20 and 24. |
| # | 'Teenagers' are people between the ages of 15 and 19. |
| # | Tables only include variable values for which there are data. |

**Crashes in Raton
by Alcohol Involvement**



■ All Crashes
■ Alcohol-involved Crashes

**Fatal and Injury Crashes in Raton
by Alcohol Involvement**



■ All Fatal and Injury Crashes
■ Alcohol-involved Fatal and Injury Crashes

Passenger Vehicle Seatbelt Usage and Injuries in Raton, 2004-2006

Injury Level	2006		2005		2004	
	Total	No Belt	Total	No Belt	Total	No Belt
Killed	2	1	0	0	0	0
Incapacitating injury	2	0	8	1	9	1
Visible injury	13	1	11	2	10	0
Complaint of injury	36	0	42	0	39	1
Unhurt	259	1	421	1	367	11
Total	312	3	482	4	425	13

The Seven Intersections in Raton with the Most Crashes, 2006

Intersection	Crashes			People	
	Total	Fatal	Injury	Killed	Injured
2nd St @ Clark Ave	2	0	1	0	1
2nd St @ Clayton Rd	3	0	1	0	1
2nd St @ Legion Dr	3	0	2	0	2
2nd St @ Mora Ave	2	0	2	0	2
2nd St @ Pecos Ave	2	0	1	0	2
2nd St @ Tiger Dr	2	0	1	0	2
3rd St @ Park Ave	2	0	0	0	0

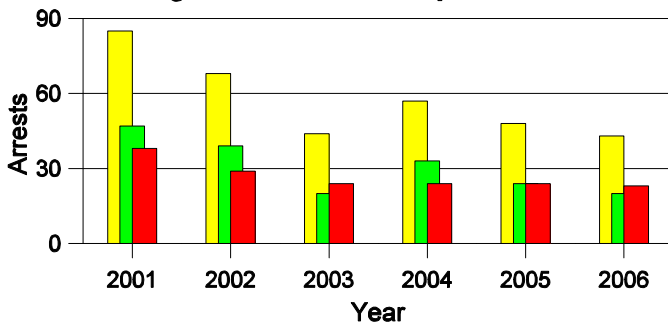
**Lifetime DWI Convictions for Drivers
Convicted of DWI Violations in Raton, 2006**

Convictions	Since 2002	Since 1982
1st	20	13
2nd	7	10
3rd	1	3
4th	0	1
5th	0	0
6th	0	0
7th	0	0
8th	0	1
9th	0	0
10 or more	0	0
Total	28	28

Convictions are counts of people convicted of DWI by 7/2007 for violations in 2006 in Raton.
Convictions are not comparable to arrests.

DWI Arrests in Raton

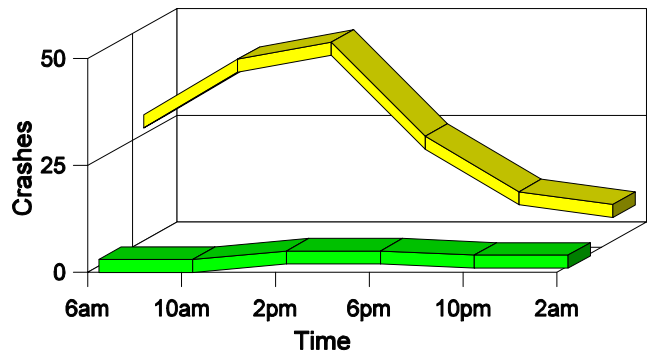
Showing First Arrests and Repeat Offenders



■ Total DWI Arrests
■ First DWI Arrests
■ Repeat DWI Arrests

Crashes in Raton

by Hour and Alcohol Involvement



■ All Crashes
■ Alcohol-involved Crashes

Crashes in Raton by Class, 2006

Class	Crashes				People		
	Total	% of Total	Fatal	% of Fatal	Injury	Killed	Injured
Other vehicle	87	56	1	50	24	1	34
Pedestrian	2	1	0	0	2	0	3
Fixed object	17	11	0	0	9	0	14
Parked vehicle	30	19	0	0	0	0	0
Overturn	2	1	1	50	1	1	1
Other non-collision	2	1	0	0	1	0	1
Pedalcyclist	2	1	0	0	0	0	0
Animal	12	8	0	0	1	0	1
Total	154	100	2	100	38	2	54

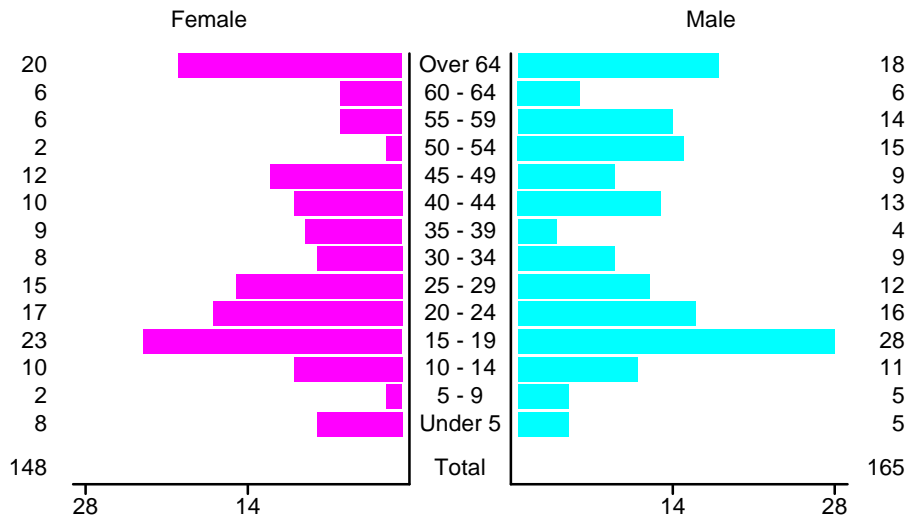
Crashes in Raton by Vehicle Type, 2006

Vehicle Type	Vehicles				People		
	Total	% of Total	Fatal	% of Fatal	Injury	Killed	Injured
Passenger car	130	47	1	33	33	1	30
Pickup	80	29	2	67	17	1	11
Semi	3	1	0	0	0	0	0
Pedalcyclist	2	1	0	0	0	0	0
Pedestrian	3	1	0	0	3	0	3
Van/4 WD	41	15	0	0	13	0	10
Other	2	1	0	0	0	0	0
Unknown	17	6	0	0	0	0	0
Total	278	100	3	100	66	2	54

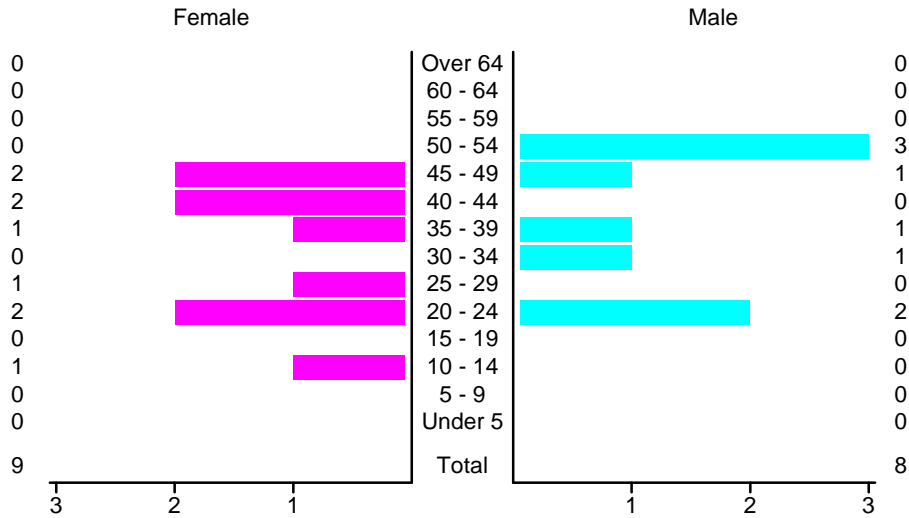
Crashes in Raton by Top Contributing Factor, 2006

Contributing Factor	Crashes				People		
	Total	% of Total	Fatal	% of Fatal	Injury	Killed	Injured
Alcohol involvement	6	4	0	0	2	0	2
Red light running	9	6	0	0	2	0	4
Failing to yield	18	12	0	0	5	0	6
Excessive speed	16	10	0	0	8	0	10
Driving left of center	4	3	0	0	0	0	0
Following too close	13	8	0	0	6	0	11
Improper turning	6	4	0	0	3	0	3
Improper overtaking	1	1	0	0	0	0	0
Improper backing	27	18	0	0	2	0	2
Mechanical defect	3	2	0	0	1	0	1
Driver inattention	31	20	2	100	6	2	11
Other	20	13	0	0	3	0	4
Total	154	100	2	100	38	2	54

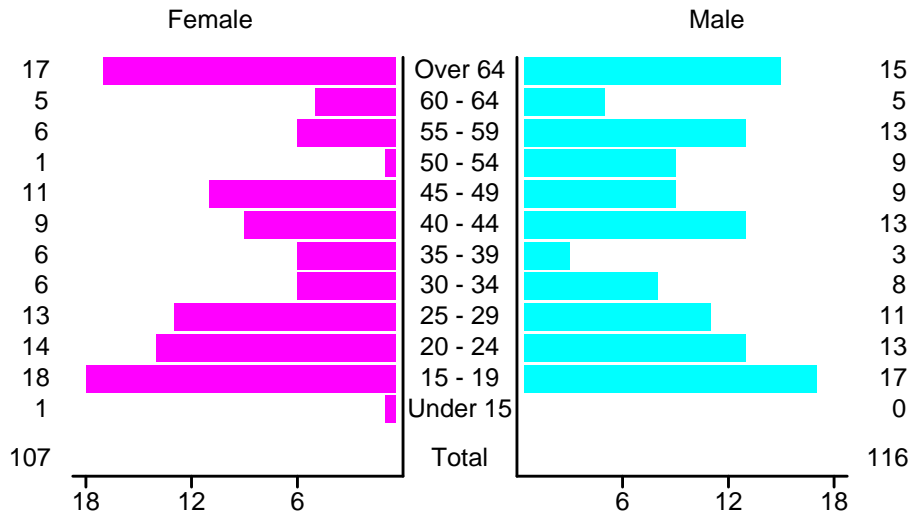
People in Crashes by Age and Sex in Raton, 2006



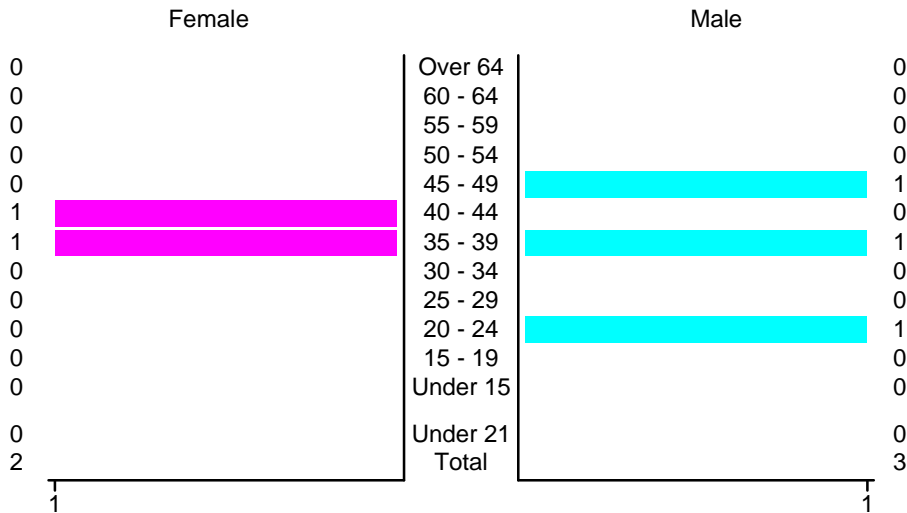
People in Alcohol-Involved Crashes in Raton by Age and Sex, 2006



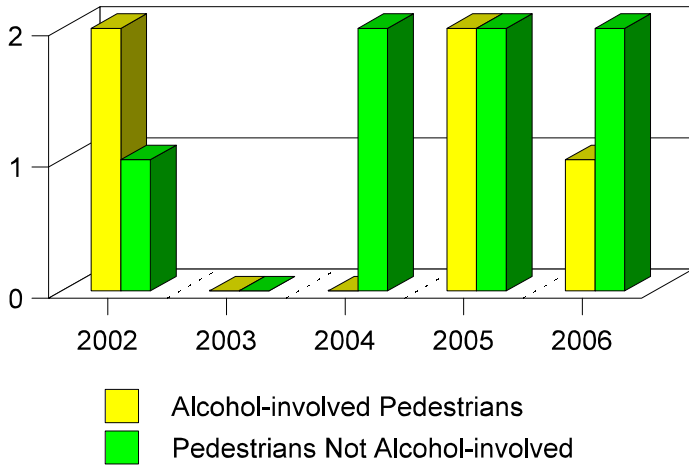
Drivers in Crashes by Age and Sex in Raton, 2006



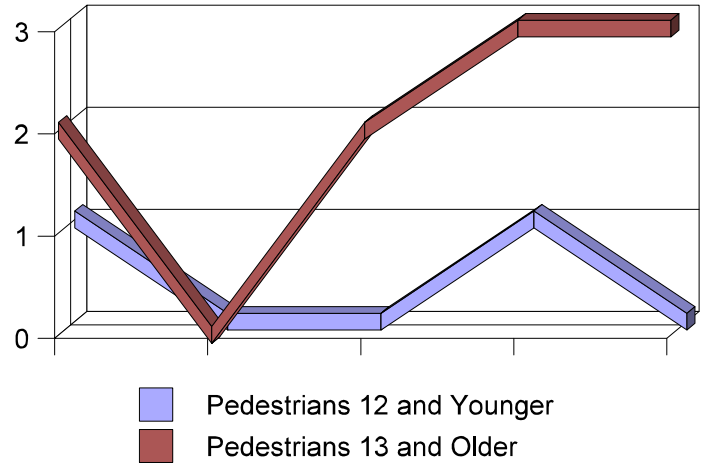
Alcohol-Involved Drivers in Crashes in Raton by Age and Sex, 2006



**Pedestrians in Crashes in Raton
by Pedestrian Alcohol-involvement**



**Pedestrians in Crashes in Raton
by Age Group**



'Teenagers' and Young Adults in Crashes in Raton by Vehicle Type, 2006

Vehicle	'Teenage' Drivers			Young Adult Drivers		
	Total	Fatal	Injury	Total	Fatal	Injury
Passenger car	28	0	6	14	0	6
Pickup	5	0	3	8	0	4
Van/4 WD	2	0	0	5	0	3
Total	35	0	9	27	0	13
Van/4 WD	7	0	3	6	0	0
Unknown	0	0	0	1	0	0
Total	58	0	9	38	0	13

'Teenagers' and Young Adults Killed and Injured in Crashes by Year in Raton, 1997-2006

Year	'Teenagers'				Young Adults			
	All Crashes		Alcohol Crashes		All Crashes		Alcohol Crashes	
	Killed	Injured	Killed	Injured	Killed	Injured	Killed	Injured
2006	0	11	0	0	0	4	0	1
2005	0	10	0	0	0	9	0	0
2004	0	14	0	3	0	9	0	0
2003	1	15	1	4	0	13	0	1
2002	0	13	0	1	0	9	0	5
2001	0	7	0	3	0	10	0	2
2000	0	11	0	1	0	3	0	0
1999	0	10	0	2	0	3	0	0
1998	0	5	0	0	0	5	0	1
1997	0	19	0	0	0	5	0	1