

D riving
W hile
I mpaired

New Mexico 1995

**New Mexico State Highway and Transportation Dept.
Transportation Programs Division
Traffic Safety Bureau**

DWI in New Mexico

is a publication of the

New Mexico State Highway and Transportation Department
Transportation Programs Division
Traffic Safety Bureau

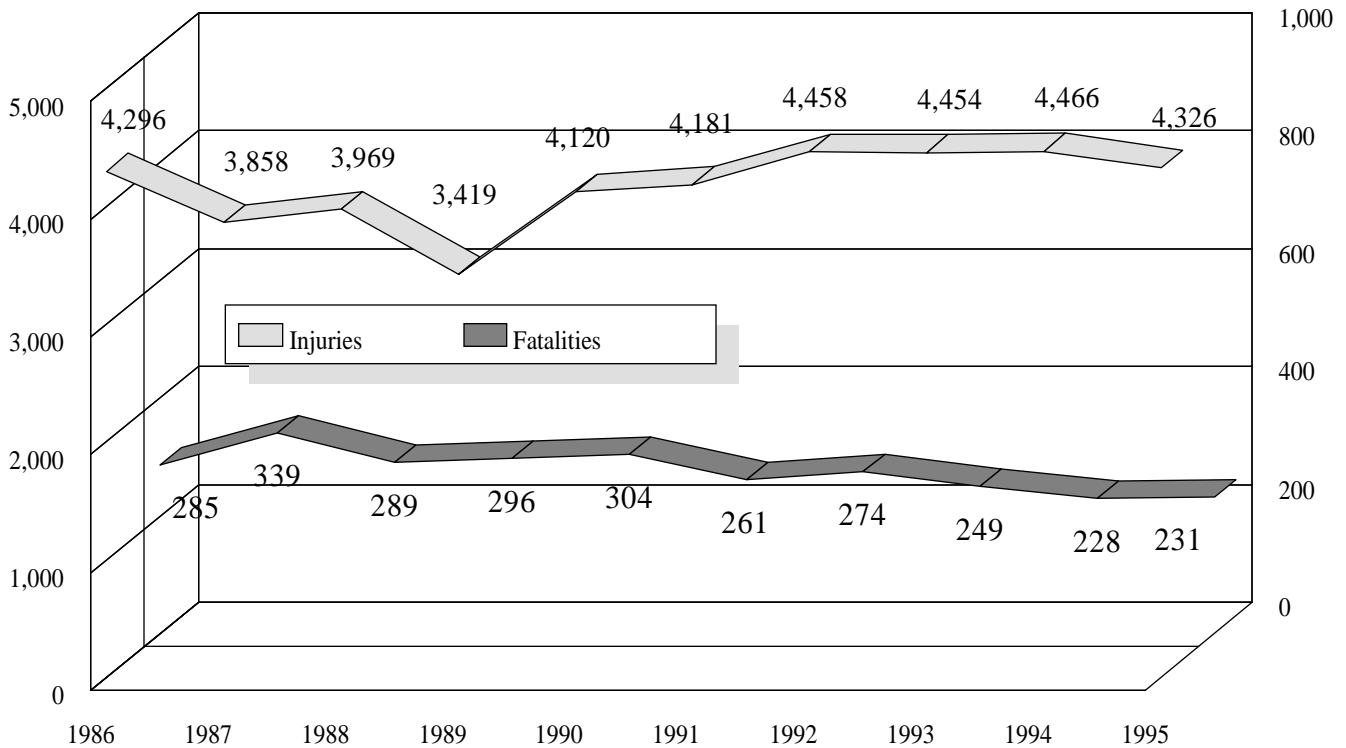
P.O. Box 1149
Santa Fe, NM 87504-1149
(505) 827-0427

CONTENTS

Impact on New Mexico	4
Laws	6
Where	8
When	10
Who	12
BAC Tests	14
Case Results	15
Trends	16
Repeat Offenders	17
Index and Sources	18
Per Capita Costs of Crashes Map	19

This report was produced by the Division of Government Research, University of New Mexico, James W. Davis, Director, under Traffic Safety Bureau grant # 01-TR-96-01. Keith W. Smith produced and edited this report.

Alcohol-involved Fatalities and Injuries, 1986-1995



Source: crash files

Contributing Factors in Fatal Crashes, 1995

Contributing Factor	Count	Percent	Percent of Involvements
Driver inattention	222	32.2	
Alcohol involved	212	30.8	
Excessive speed	173	25.1	
Other	82	11.9	
Other improper driving	78	11.3	
Drove left of center	55	8.0	
Failure to yield	32	4.6	
Disregard traffic control	24	3.5	
Improper overtaking	13	1.9	
Improper turn	13	1.9	
Mechanical defects	13	1.9	
Following too close	7	1.0	
Total	689		

Source: crash files

- ◆ These are counts of all factors reported to have contributed to fatal crashes. These are *not* the same thing as fatal crash counts, since a single crash often involves more than one vehicle, and each vehicle may be affected by more than one factor. The percents shown are the percents of vehicles in fatal crashes which were affected by each of the contributing factors. For these reasons the total here is higher than in other tables presenting fatal crash information, and the percentages sum to more than 100.

Victims of Alcohol-involved Crashes, 1995

County	People in Crashes			Impact (in dollars) ²		1995 Population ³
	Total	Sober ¹	Under 18	Total (000)	Per capita	
Bernalillo	4,281	1,809	927	221,924	425	522,328
Catron	24	6	5	4,831	1,777	2,719
Chaves	250	68	54	25,186	408	61,770
Cibola	221	69	61	26,008	1,033	25,166
Colfax	96	16	13	15,032	1,085	13,860
Curry	169	58	39	13,529	285	47,464
De Baca	11	4	0	1,572	662	2,373
Dona Ana	994	349	210	88,134	555	158,849
Eddy	274	64	44	23,868	452	52,758
Grant	177	49	42	16,290	542	30,076
Guadalupe	34	3	4	6,269	1,538	4,075
Harding	2	0	0	362	397	913
Hidalgo	28	8	4	4,987	797	6,259
Lea	215	86	43	16,221	286	56,793
Lincoln	178	52	30	16,666	1,122	14,853
Los Alamos	16	4	3	1,469	79	18,604
Luna	127	45	39	13,517	611	22,121
McKinley	877	312	215	87,049	1,299	66,991
Mora	32	6	2	5,666	1,237	4,581
Otero	237	65	42	23,062	419	55,027
Quay	35	7	6	4,183	399	10,488
Rio Arriba	428	150	116	46,097	1,247	36,959
Roosevelt	66	18	9	6,450	349	18,465
Sandoval	308	94	65	35,176	441	79,781
San Juan	959	350	194	94,174	937	100,470
San Miguel	312	110	45	31,995	1,123	28,490
Santa Fe	1,000	392	180	87,934	755	116,414
Sierra	74	10	14	11,287	1,065	10,600
Socorro	117	33	22	16,341	1,031	15,853
Taos	211	67	33	27,244	1,065	25,581
Torrance	77	25	13	11,930	929	12,835
Union	12	0	2	2,303	556	4,139
Valencia	451	174	126	47,409	821	57,746
Total	12,293	4,503	2,602	1,034,165	613	1,685,401

Source: crash files

- 1 Sober people are drivers, passengers and pedestrians who were involved in a crash with a driver or pedestrian who had been drinking.
- 2 Impact is the cost of DWI related crashes in New Mexico based on Federal Highway Administration estimation formulae (*The Costs of Highway Crashes*, FHWA-RD-91-055, Federal Highway Administration, 1991). The figures are based on 1988 dollars, adjusted for inflation to 1995 dollars. **These are estimates, not actual dollar amounts.** Included are direct costs such as lost wages and medical expenses, and indirect "willingness to pay" estimates of lost quality of life.
- 3 Population estimates are for July 1, 1995, from the Bureau of the Census, Population Division.

DWI Penalties in New Mexico

Offense	Administrative License Revocation
Implied Consent Violation (Driving with BAC over legal limit or refusal to take BAC test)	Age under 21 and BAC at least .02: 6 months Age 21 or older and BAC at least .08: 90 days Refusal: 1 year Subsequent offense or refusal: 1 year

Note that this is **not** a criminal offense, and the resulting license revocation is an administrative, not a criminal penalty. Municipalities are prohibited from establishing *per se* BAC limits different from state limits (§66-8-102.2)*. Licenses remain revoked until offenders reinstate them. First offenders who did not refuse the BAC test may obtain limited licenses after a 30-day revocation.

* This and other section numbers refer to New Mexico Statutes Annotated, 1978

Offense	Jail	Fine	License Revocation	Other
Driving While Revoked for DWI §66-5-39	Mandatory: 7 days Maximum: 364 days	Mandatory: \$300 Maximum: \$1,000	1 year	30 days immobilization of vehicle driven by offender

Notes on DWI Convictions

- 1 Aggravated DWI is defined as: A. Driving with a BAC of .16 or more, B. Causing a person bodily injury while DWI, **or** C. Refusing a BAC test, if a court determines, based on other evidence, that the person was DWI.
 - 2 Jail time served prior to conviction on a first offense *only* will be credited.
 - 3 The judge *shall* sentence the offender to alcohol screening; the court will approve screening programs; the court does not have to order the offender to pay for it (§66-8-102K).
- ◆ A deferred sentence on a first offense *is still* a first offense for the purposes of defining subsequent offenses (§66-8-102E).

(see notes on preceding page)

Basic Sentence					Aggravated ¹
DWI Conviction	Jail (mandatory time must be consecutive)	Fines and Costs	License Revocation	Other	If convicted of ADWI
1st Misdemeanor §66-8-102E	Mandatory: 48 hours if offender fails to comply with sentence Maximum: 90 days ²	Maximum: \$500 §66-8-102E License Fee: \$100 §66-5-33.1 Crime Lab Fee: \$35 §31-12-7A Community Fee: \$75 §31-12-7B DWI School: \$75-\$100 Alcohol Screening: \$100-\$200	1 year (Unless DWI school is completed) §66-5-29A	Mandatory: DWI school and screening ³ If ordered by court: 48 hours community service, treatment	Mandatory: additional 48 hours jail §66-8-102D §66-8-102E
2nd Misdemeanor §66-8-102F	Mandatory: 7 days if offender fails to comply with sentence Mandatory: 72 hours Maximum: 364 days ²	Maximum: \$1,000 Mandatory: \$500 §66-8-102F License Fee: \$100 §66-5-33.1 Crime Lab Fee: \$35 §31-12-7A Community Fee: \$75 §31-12-7B Alcohol Screening: \$100-\$200	1 year §66-5-29A	Mandatory: 48 hours community service §66-8-102E, Screening ³ If ordered by court: treatment	Mandatory: additional 96 hours jail §66-8-102D §66-8-102E
3rd Misdemeanor §66-8-102F	Mandatory: 60 days if offender fails to comply with sentence Mandatory: 30 days Maximum: 364 days ²	Maximum: \$1,000 Mandatory: \$750 §66-8-102F License Fee: \$100 §66-5-33.1 Crime Lab Fee: \$35 §31-12-7A Community Fee: \$75 §31-12-7B Alcohol Screening: \$100-\$200	10 years if two prior convictions are within 10 years of the third conviction Otherwise: 1 year	Mandatory: screening ³ If ordered by court: treatment	Mandatory: additional 60 days jail §66-8-102D §66-8-102E
4th or subsequent 4th Degree Felony §66-8-102G	Mandatory: 6 months §66-8-102G Maximum: 18 months ² §31-18-15A(6)	Maximum: \$5,000 §31-18-15E(5) License Fee: \$100 §66-5-33.1 Crime Lab Fee: \$35 §31-12-7A Community Fee: \$75 §31-12-7B Alcohol Screening: \$100-\$200	10 years if two prior convictions are within 10 years of the current conviction Otherwise: 1 year	Mandatory: screening ³ If ordered by court: treatment	

Source: Institute of Public Law, UNM School of Law

Alcohol-involved Crashes and DWI Convictions by County, 1995

County	Crashes ¹				People Killed	People Injured	DWI Conv.	Rates ²		Licensed Drivers
	Alcohol Fatal	% of all Fatal	Alcohol Injury	% of all Injury				Alcohol Crashes	DWI Conv.	
Bernalillo	32	41	854	10	40	1,433	2,991	2.4	8.1	371,182
Catron	3	50	9	26	3	15	3	4.6	1.2	2,608
Chaves	4	40	62	11	4	79	375	1.6	9.2	40,759
Cibola	8	47	47	20	10	84	307	3.8	21.1	14,545
Colfax	1	33	32	23	1	52	136	3.2	13.0	10,463
Curry	2	33	37	11	3	57	297	1.3	9.5	31,106
De Baca	1	50	3	14	1	6	10	2.3	5.7	1,744
Dona Ana	16	52	224	14	18	358	1,141	2.2	10.6	107,609
Eddy	6	55	58	13	7	104	523	1.7	13.8	37,876
Grant	0	0	43	14	0	67	208	2.0	9.6	21,706
Guadalupe	0	0	13	13	0	18	46	4.3	15.3	3,015
Harding	0	0	0	0	0	0	3	0	4.1	723
Hidalgo	0	0	15	28	0	20	34	3.2	7.4	4,625
Lea	1	13	48	11	1	77	448	1.2	10.9	40,922
Lincoln	3	33	51	25	4	80	164	4.1	12.5	13,136
Los Alamos	0	0	4	4	0	4	61	0.2	3.6	16,807
Luna	3	38	23	11	3	50	104	1.6	6.5	16,040
McKinley	13	59	157	27	15	274	1,360	4.7	37.8	35,995
Mora	2	33	7	16	2	15	45	2.8	14.2	3,170
Otero	5	38	45	11	9	68	408	1.4	11.1	36,767
Quay	2	67	12	10	2	20	94	1.7	11.3	8,312
Rio Arriba	17	77	89	22	18	167	546	4.1	21.1	25,904
Roosevelt	0	0	15	12	0	26	157	1.2	12.6	12,451
Sandoval	9	56	65	13	10	104	492	1.3	8.6	56,966
San Juan	24	73	185	18	28	309	1,352	3.2	20.5	65,911
San Miguel	5	71	65	21	5	109	343	4.1	20.0	17,159
Santa Fe	13	54	230	13	13	382	1,126	2.8	13.2	85,504
Sierra	3	43	19	19	4	27	55	2.4	6.1	8,988
Socorro	4	44	22	17	4	31	158	2.3	13.9	11,396
Taos	8	73	44	14	8	63	222	2.6	11.0	20,254
Torrance	3	17	15	10	3	22	84	2.2	10.1	8,348
Union	1	50	2	6	1	2	30	0.9	9.1	3,289
Valencia	13	59	96	19	14	203	490	2.9	12.8	38,241
Other							898			
Total	202	48	2,591	13	231	4,326	14,711	2.4	12.5	1,173,521

Sources: crash files and Driver History file

- 1 The crash percentages shown are the percent of all crashes which involved alcohol. For example, 41 percent of all Bernalillo County fatal crashes involved alcohol, and resulted in 40 fatalities.
- 2 Rates are per 1,000 licensed drivers.
- 3 Severe crashes are those involving death or injury.

◆ DWI convictions are those handed down in 1995. The citations which resulted in these convictions could have been issued prior to 1995. See the note on page 17 for a complete explanation. Convictions are counted by county of driver residence, not the county in which the citation was issued. Driver residence county was determined by ZIP code. The 898 convictions received by drivers with missing, invalid, or out-of-state ZIP codes are shown as "Other" and are included in the total.

Alcohol-involved Crashes and DWI Convictions by City, 1995

City	Crashes				People Killed	People Injured	DWI Conv.	Rates		Licensed Drivers
	Alcohol Fatal	% of all Fatal	Alcohol Injury	% of all Injury				Severe Alcohol Crashes	DWI Conv.	
Alamogordo	0	0	22	8	0	29	273	0.9	11.0	24,901
Albuquerque	26	43	811	10	32	1368	2,926	2.3	8.1	359,224
Artesia	0	0	6	10	0	11	167	0.6	15.4	10,872
Aztec	0	0	4	7	0	5	91	0.5	11.1	8,205
Bayard	0	0	1	8	0	1	28	0.5	12.8	2,185
Belen	0	0	13	13	0	19	165	1.0	12.7	12,964
Bernalillo	0	0	6	17	0	7	81	1.0	14.1	5,738
Bloomfield	0	0	4	12	0	5	137	0.5	16.5	8,280
Bosque Farms	1	100	4	8	1	8	33	1.4	9.2	3,580
Carlsbad	3	100	33	11	3	58	315	1.4	12.6	24,903
Clayton	0	0	1	10	0	1	22	0.4	9.6	2,297
Clovis	1	33	26	10	1	34	270	1.0	9.6	28,022
Corrales	0	0	2	9	0	2	33	0.3	4.8	6,847
Deming	1	100	8	8	1	22	97	0.6	6.5	14,859
Espanola	3	100	45	16	3	80	226	4.8	22.8	9,928
Eunice	0	0	1	10	0	1	25	0.4	10.9	2,289
Farmington	3	60	60	11	3	97	461	2.0	14.4	32,030
Gallup	5	83	57	21	5	95	499	3.7	30.1	16,563
Grants	1	33	16	20	1	26	107	2.4	15.0	7,139
Hobbs	1	100	31	12	1	49	282	1.2	10.6	26,706
Jal	0	0	0	0	0	0	16	0	8.7	1,835
Las Cruces	5	50	126	12	7	200	617	2.0	9.2	66,995
Las Vegas	1	100	30	16	1	50	263	2.6	21.7	12,120
Lordsburg	0	0	4	27	0	8	22	1.3	7.3	3,014
Los Alamos	0	0	3	3	0	3	61	0.2	3.6	16,807
Los Lunas	2	100	14	11	2	31	260	0.9	14.0	18,601
Lovington	0	0	1	2	0	1	112	0.1	12.9	8,672
Milan	0	0	3	20	0	4	38	1.6	20.1	1,892
Portales	0	0	7	9	0	15	150	0.6	13.1	11,415
Raton	0	0	9	21	0	18	89	1.4	13.6	6,527
Rio Rancho	1	33	15	6	1	25	170	0.5	5.3	31,945
Roswell	1	50	40	10	1	53	314	1.1	8.7	36,230
Ruidoso	0	0	29	28	0	43	79	4.5	12.2	6,473
Santa Fe	3	43	124	11	3	218	1,017	1.7	13.6	74,685
Silver City	0	0	19	13	0	35	120	1.4	9.2	13,107
Socorro	0	0	5	13	0	8	87	0.7	12.3	7,070
Sunland Park	0	0	5	15	0	7	90	0.8	14.9	6,028
Taos	0	0	13	12	0	19	72	1.6	8.8	8,207
T or C	0	0	6	13	0	8	33	1.2	6.4	5,190
Tucumcari	0	0	8	15	0	13	85	1.2	13.2	6,436
Tularosa	0	0	0	0	0	0	55	0	17.0	3,240

Sources: crash files and Driver History file








◆ The notes for the previous table apply here as well.

Alcohol-involved Crashes and DWI Arrests by Month, 1995

Month	Crashes		Arrests	
	Total	Percent	Total	Percent
January	386	7.7	1,923	8.8
February	404	8.0	1,749	8.0
March	444	8.8	1,865	8.5
April	425	8.5	1,977	9.0
May	413	8.2	1,874	8.6
June	429	8.5	1,702	7.8
July	435	8.7	1,821	8.3
August	422	8.4	1,748	8.0
September	413	8.2	1,766	8.1
October	398	7.9	1,774	8.1
November	425	8.5	1,764	8.1
December	425	8.5	1,939	8.9
Total	5,019	100.0	21,902	100.0

Source: crash files and DWI Citation Tracking file

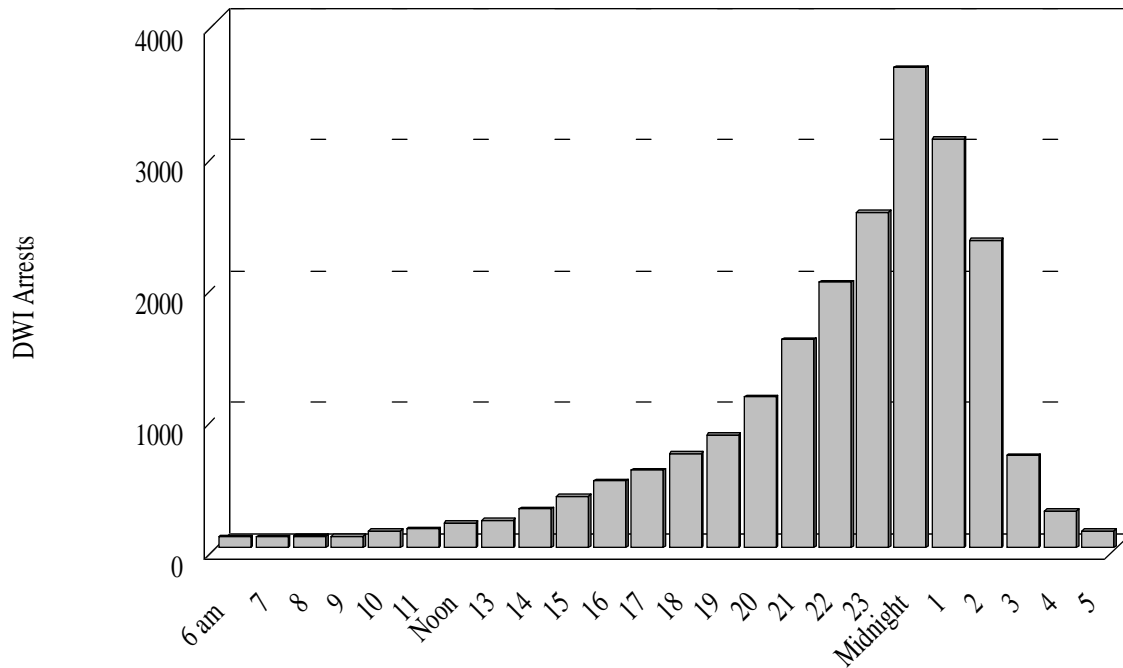
Alcohol-involved Crashes and DWI Arrests by Day of the Week, 1995

Day	Crashes		Arrests		Arrests
	Total	Percent	Total	Percent	
Sunday	612	12.2	2,058	9.4	
Monday	519	10.3	1,655	7.6	
Tuesday	523	10.4	1,868	8.5	
Wednesday	561	11.2	2,499	11.4	
Thursday	595	11.9	2,821	12.9	
Friday	1,117	22.3	5,597	25.6	
Saturday	1,092	21.8	5,404	24.7	
Total	5,019	100.0	21,902	100.0	

Source: crash files and DWI Citation Tracking file

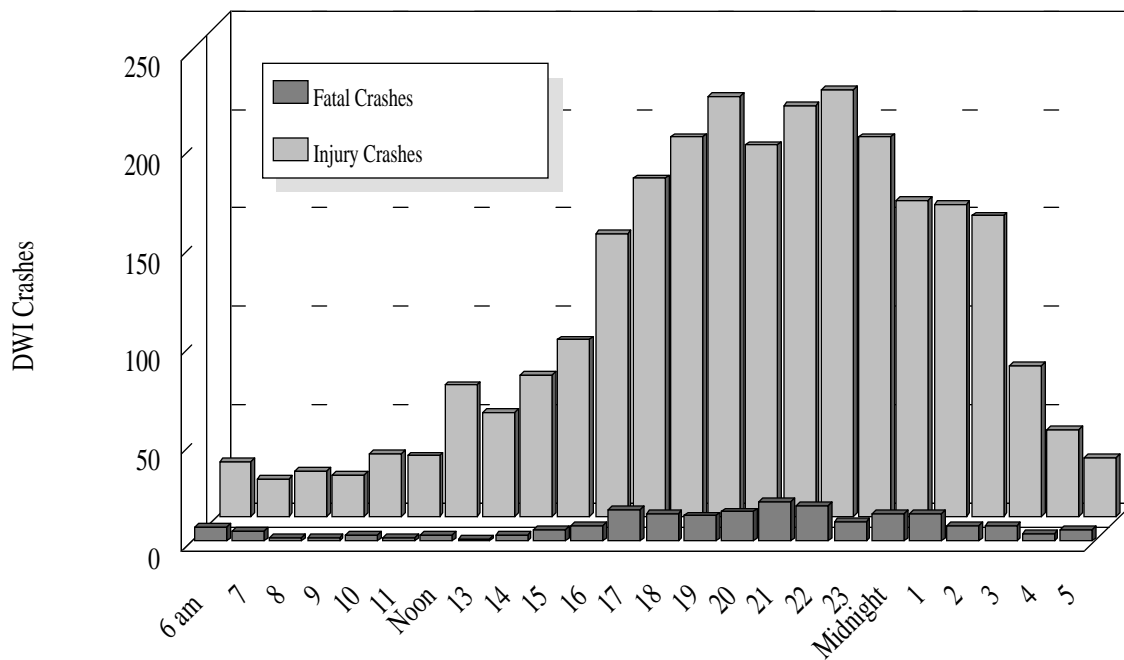
◆ For this table, each day was considered to run from 6:00 a.m. to 5:59 the following morning.

DWI Arrests by Hour of the Day, 1995



Source: DWI Citation Tracking file

Alcohol-involved Crashes by Hour and Severity, 1995



Source: crash files

New Mexico DWI Arrests by Age and Sex, 1995

Age	Total	Male	Female	Total
Under 15	11	8	3	
15-19	1,437	1,282	155	
20-24	3,617	3,165	452	
25-29	3,779	3,254	525	
30-34	4,096	3,391	705	
35-39	3,323	2,729	594	
40-44	2,213	1,849	364	
45-49	1,460	1,247	213	
50-54	850	749	101	
55-59	458	410	48	
60-64	239	224	15	
Over 64	235	218	17	
Total	21,718	18,526	3,192	
Under 21	2,012	1,784	228	

Source: DWI Citation Tracking file

Alcohol-involved Crashes and DWI Convictions by Driver Age and Sex, 1995

Age	Severe Crash Drivers ¹				DWI Conv.	Rates ²		Licensed Drivers
	Fatal Male	Fatal Female	Injury Male	Injury Female		Severe Alcohol Crashes	DWI Conv.	
Under 15	3	0	4	2	1	113.92	12.66	79
15-19	18	3	225	68	692	4.25	9.37	73,875
20-24	37	4	418	81	2,409	5.06	22.57	106,758
25-29	25	6	336	80	2,634	3.93	23.13	113,871
30-34	23	5	337	86	2,819	3.39	21.21	132,906
35-39	15	5	263	76	2,350	2.59	16.98	138,436
40-44	20	2	181	43	1,526	1.90	11.76	129,747
45-49	11	2	128	17	1,005	1.38	8.79	114,383
50-54	8	0	76	12	592	1.12	6.90	85,780
55-59	4	0	36	10	312	0.72	4.50	69,355
60-64	3	0	42	5	195	0.82	3.20	60,875
Over 64	11	1	58	7	173	0.52	1.17	147,456
Total	178	28	2,104	487	14,708	2.38	12.53	1,173,521
Under 21	31	3	294	84	1,076	4.39	11.48	93,766

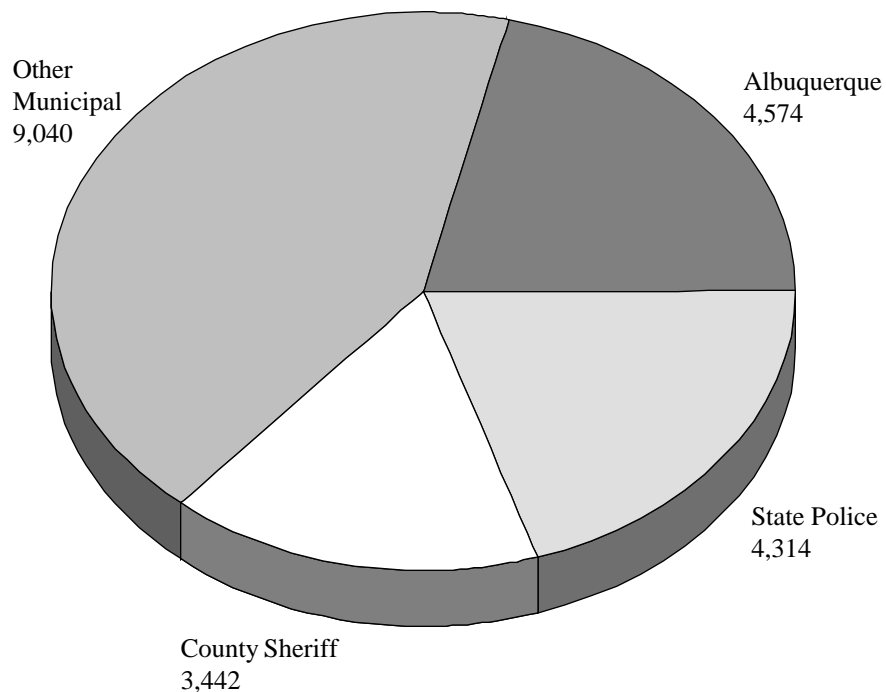
Sources: crash files and Driver History file

1 Severe crashes are those resulting in death or injury.

2 Rates are per 1,000 licensed drivers.

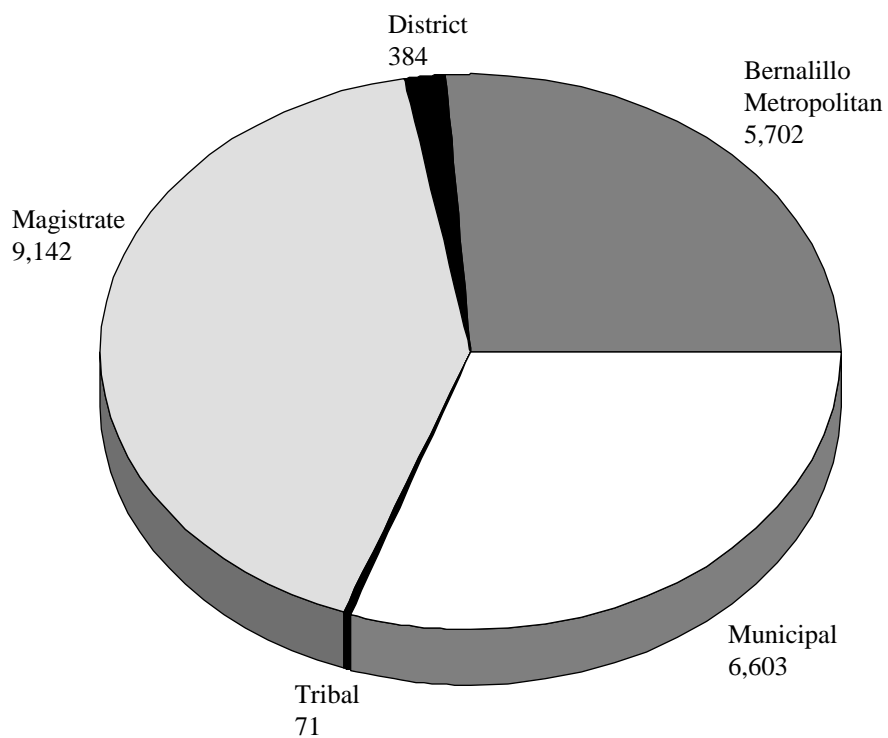
- ◆ These are drivers or pedestrians in crashes who reportedly had been drinking.
- ◆ Conviction data are not comparable to previous years'. See explanation on page 17.
- ◆ People under the legal drinking age of 21 accounted for 7.3 percent of the DWI convictions in 1995.

DWI Arrests by Police Agency, 1995



Source: DWI Citation Tracking file

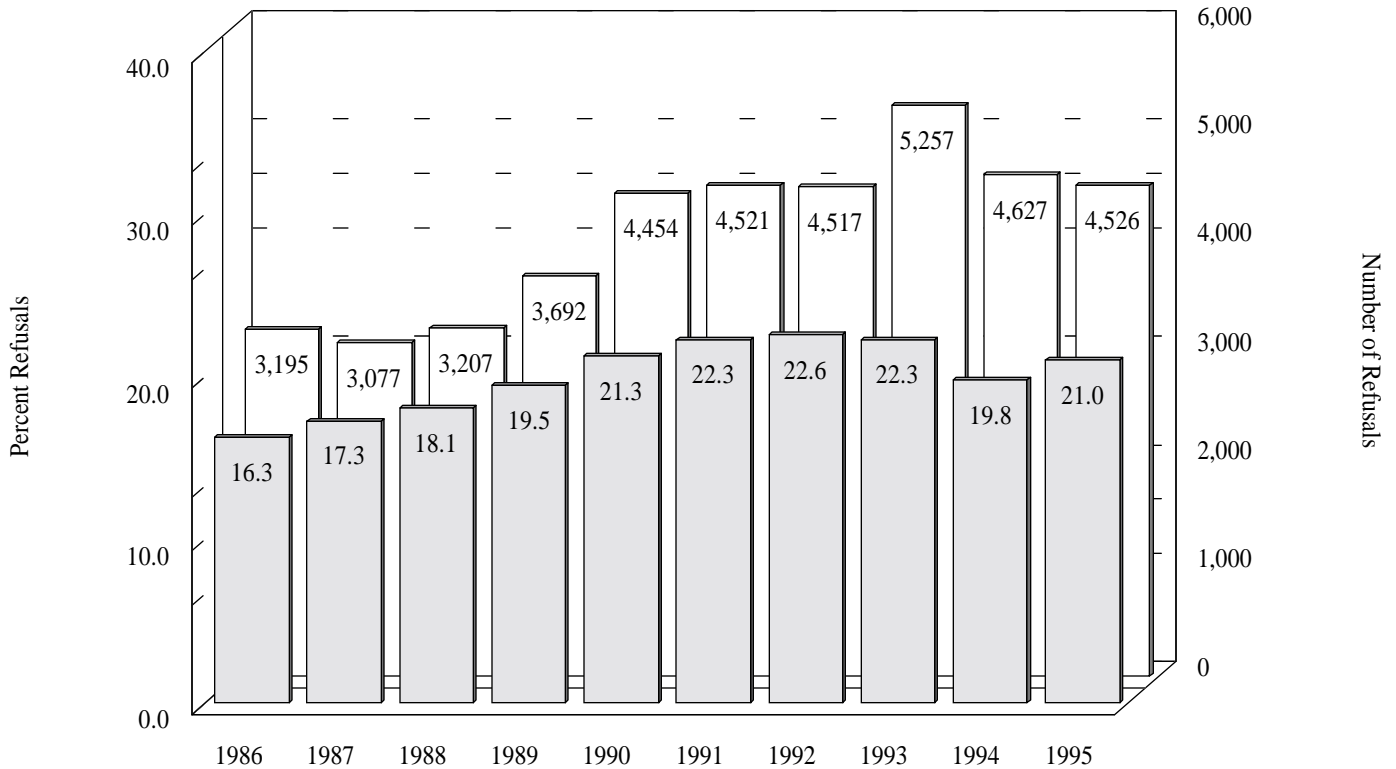
DWI Arrests by Type of Court, 1995



Source: DWI Citation Tracking file

BAC TESTS

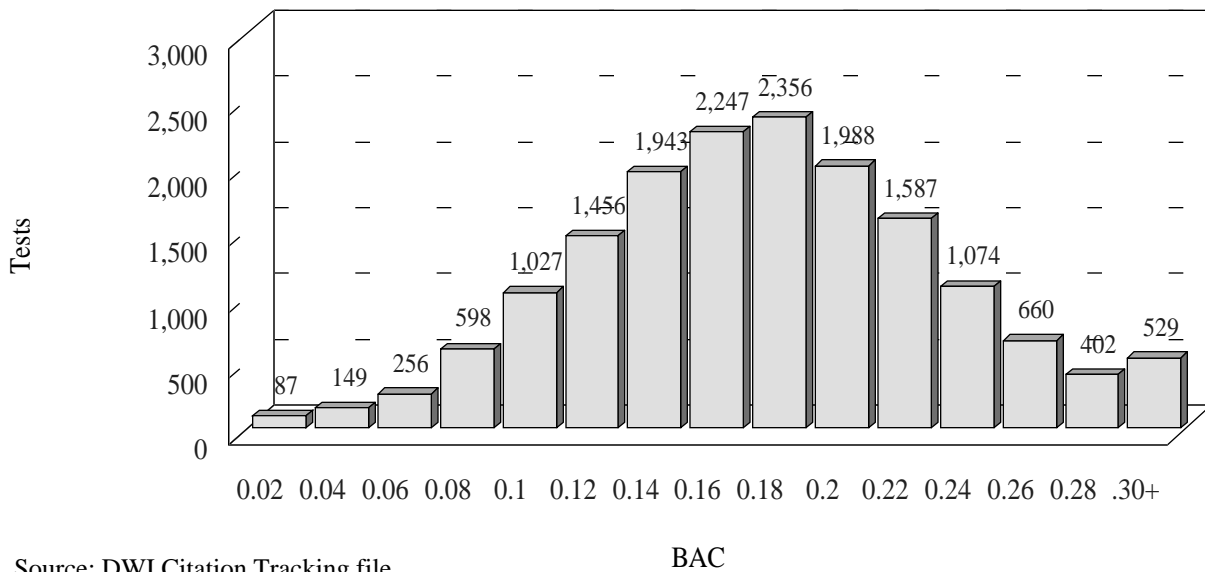
BAC Test Refusals, 1986-1995



Source: DWI Citation Tracking file

- ◆ More than one out of every five BAC tests were refused in 1995.

BAC Test Results, 1995



Source: DWI Citation Tracking file

- ◆ The mean BAC result was 0.17 – double the legal limit for drivers over 21. This average excludes tests with a result of 0, which are also excluded from this graph. There were very few test results less than 0.02, which is why the 0.00 bar is not present.

Mean Number of Days to Court Disposition by County, 1995

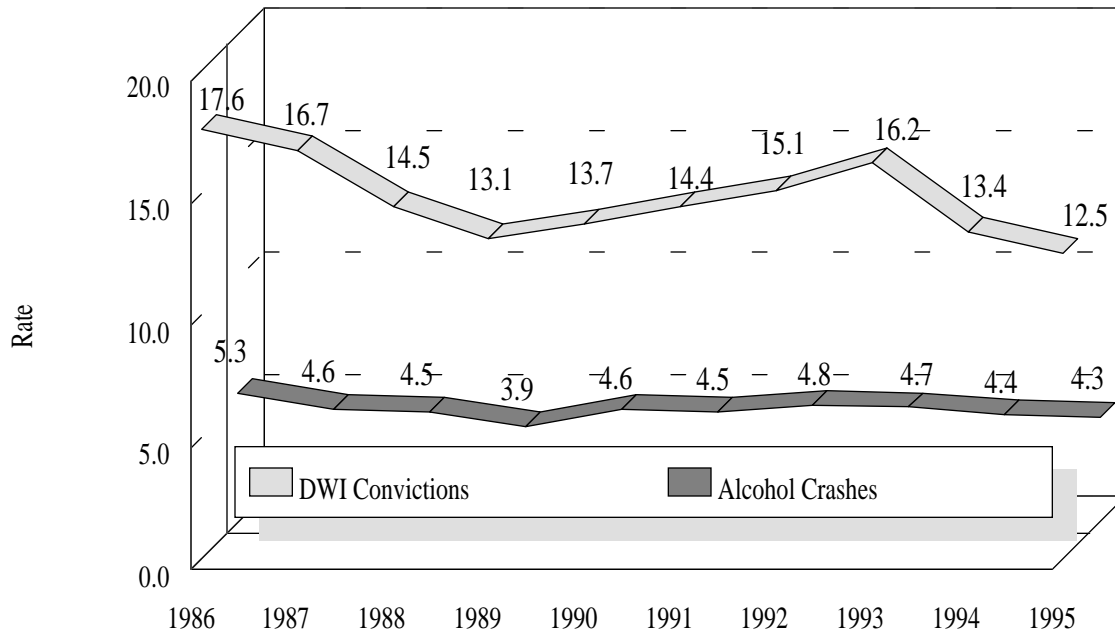
County	Total Arrests	Percent Crash Involved ¹	Mean BAC ²	Citations Resolved ³		Mean Days ⁴	
				DWI Conviction	Dismissal	DWI Conviction	Dismissal
Bernalillo	5,840	19	0.16	2,210	1,104	116	135
Catron	12	58	0.13	10	0	69	0
Chaves	377	20	0.18	286	13	39	139
Cibola	422	13	0.19	224	37	65	85
Colfax	268	14	0.16	184	46	34	56
Curry	450	13	0.17	293	24	66	72
De Baca	31	9	0.16	25	2	37	32
Dona Ana	1,713	17	0.17	946	147	49	99
Eddy	674	14	0.16	549	60	35	79
Grant	366	18	0.16	218	75	49	74
Guadalupe	75	24	0.19	45	13	52	85
Harding	2	0	0	1	1	134	10
Hidalgo	90	16	0.18	67	14	14	80
Lea	599	13	0.17	456	36	34	95
Lincoln	270	24	0.16	176	28	56	119
Los Alamos	109	7	0.14	48	16	133	119
Luna	184	22	0.18	96	23	45	111
McKinley	2,051	10	0.18	1,318	179	57	78
Mora	50	26	0.19	28	8	76	177
Otero	737	13	0.16	472	93	51	63
Quay	141	16	0.17	96	8	44	87
Rio Arriba	552	19	0.19	339	53	55	90
Roosevelt	216	12	0.15	165	15	39	78
Sandoval	714	12	0.17	298	124	85	111
San Juan	1,661	13	0.18	1,093	146	48	105
San Miguel	528	21	0.17	320	35	73	136
Santa Fe	2,181	17	0.17	1,136	203	78	99
Sierra	138	28	0.17	65	24	75	115
Socorro	193	21	0.18	116	15	69	158
Taos	290	26	0.19	166	28	71	146
Torrance	136	15	0.17	73	17	92	145
Union	33	12	0.20	27	0	76	0
Valencia	736	21	0.16	439	120	56	78
Total	21,839	16	0.17	11,985	2,707	67	111

Source: DWI Citation Tracking file

- 1 This is the percentage of citations which were issued after a traffic crash brought the DWI incident to police attention.
- 2 Only citations for which a BAC was determined are included; citations for which the offender refused to submit to a BAC test are excluded.
- 3 These are the results of citations issued in 1995 which were available by March 1996. The conviction counts differ from those in other tables because these are based on 1995 citations. The resulting convictions or dismissals could have been decided in 1996.
- 4 These are the average number of days between the date of the citation and the date of the court disposition. For example, of the 2,210 DWI citations issued in Bernalillo County which resulted in a conviction by March 1996, there was an average of 116 days between the time the citation was issued and the time the sentence was handed down.

TRENDS

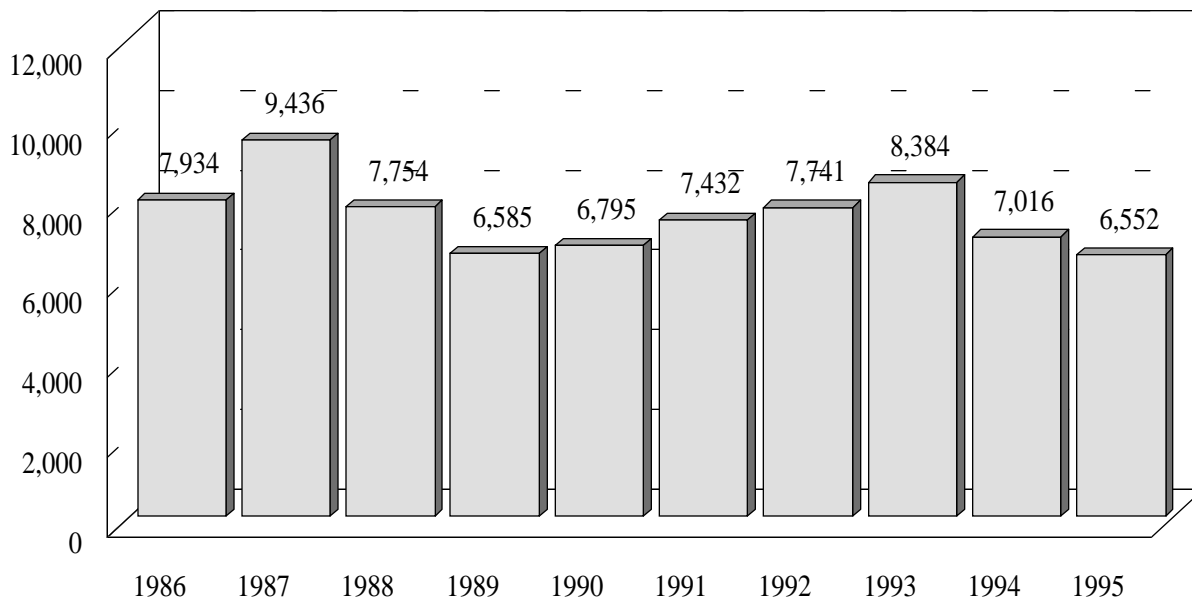
DWI Conviction Rates and Alcohol-involved Crash Rates, 1986-1995



Sources: Driver History file and crash files

- ◆ The rates are incidents (convictions or crashes) per 1,000 licensed drivers. See page 17 for a note about convictions.



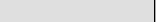
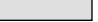







Repeat DWI Convictions, 1986-1995



Source: Driver History file

REPEAT OFFENDERS

Total Number of DWI Convictions for Drivers Convicted of DWI in 1995


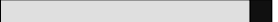


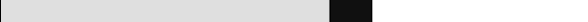






Conviction	Since 1989	Since 1970	Number of DWI Convictions Since 1970
1st	9,594	7,655	
2nd	2,948	2,861	
3rd	943	1,496	
4th	307	898	
5th	88	488	
6th	17	225	
7th	9	134	
8th	1	66	
9th	1	43	
10th	0	18	
11th or more	0	24	
Total	13,908	13,908	

Source: Driver History file

- ◆ There were 13,908 people convicted of DWI in 1995. Of those, 9,594 had not been convicted since 1989, and 7,655 had not been convicted since 1970 (1,939 had been convicted at least once between 1970 and 1989). The number of repeat convictions (6,552, see table below) is *not* equal to the total minus the number of first convictions, because some people were convicted more than once in 1995. Only their last conviction is included in the table above, while all repeat convictions are included in the table below.

Conviction note: Unless otherwise noted, conviction counts in this report are based on convictions handed down in 1995, and *are only comparable to counts in the 1994 edition of this report*. The citations which resulted in these convictions could have been issued before 1995. Prior to 1994 this report counted only citations issued during a particular year (e.g. 1995) which resulted in convictions by a cutoff date (usually July of the following year). Convictions which occurred after that date were never counted. With the current approach *all* convictions are counted regardless of date.

DWI Repeat Convictions by Age and Sex, 1995

Age	Total	Male	Female	Total
15-19	68	63	5	
20-24	611	563	48	
25-29	1,115	996	119	
30-34	1,428	1,234	194	
35-39	1,304	1,134	170	
40-44	835	743	92	
45-49	546	491	55	
50-54	283	248	35	
55-59	163	151	12	
60-64	107	98	9	
Over 64	92	84	8	
Total	6,552	5,805	747	
Under 21	120	111	9	

Male
 Female

Source: Driver History file

INDEX & SOURCES

Age	3, 10, 15	Economic impact	3
Agency	11	Fatalities	2, 6, 7
Arrests	8, 9, 10, 11, 13	Hour	9
BAC tests	12	Injuries	2
BAC test refusal	12	Laws	4, 5
Citations	8, 9, 10, 11, 13	Licensed drivers	6, 7, 10
Crash related	13	Mean BAC	13
City	7	Mean days	13
Contributing factors	2	Month	8
Convictions	6, 7, 10, 14	Penalties	4, 5
Repeat convictions	14, 15	Population	3
County	3, 6, 13	Rates	6, 7, 10, 14
Court	11, 13	Repeat convictions	14, 15
Day	8	Sex	10, 15
Days to disposition	13	Sober people	3
DWI crashes			
All	8, 9, 14		
Fatal	6, 7, 10		
Injury	6, 7, 10		

Source data are noted below each table. The data sources are:

crash files- Information from crash reports submitted by the many law enforcement agencies in the state, compiled and processed by the Transportation Statistics Bureau and reprocessed by the Division of Government Research, UNM.

Driver History file- Driver's license and conviction data maintained by the Motor Vehicle Division. Conviction data are current as of March 1996.

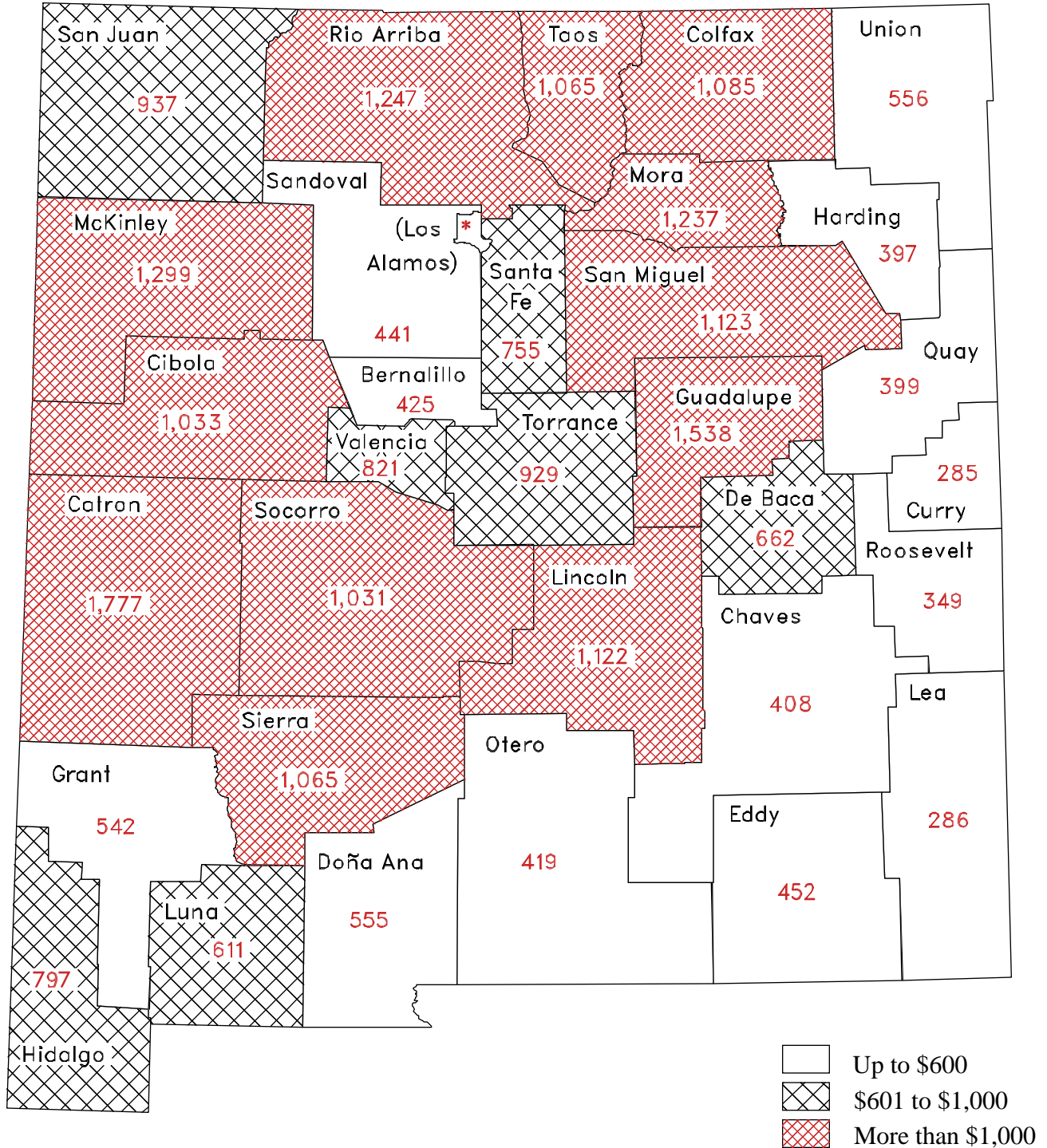
DWI Citation Tracking file- Data from all DWI citations submitted to, and maintained by, the Motor Vehicle Division. BAC test results are part of these data. Data from this file are as of March 1996.

licensed drivers- Counts are from the Driver History file as of August 1995.

population- Figures are from U.S. Department of Commerce, Bureau of the Census, Population Division. Estimates are for July 1, 1995, and were current as of August 1996.

The Division of Government Research provides a wide range of data processing and analysis services to a variety of clients. This report presents only a portion of the data available concerning DWI in the state. These data are processed by DGR, but owned by the Traffic Safety Bureau of the New Mexico Highway and Transportation Department. Therefore, requests for further information should be directed to TSB at the address inside the front cover.

Per Capita Cost Estimates of Alcohol-involved Crashes, 1995



* Los Alamos - \$79

DWI Cost estimates based on FHWA economic loss formulae

Population estimates are for July 1995