



College Algebra (1215, 1220) Prep

---



# Drop-In Tutoring for Engineering & Computing

Get help in your core STEM courses, engineering & computing specific classes, software, and coding languages.

ESS suite (CEC 2080) & online via Zoom



Tutoring schedule & more info at  
[ess.unm.edu/services/tutoring/](https://ess.unm.edu/services/tutoring/)

or through our web-app - succESS





# CENTER FOR TEACHING & LEARNING



[ctl.unm.edu](http://ctl.unm.edu)

**STEM  
Tutoring**

**Writing  
Tutoring**

**Conversation  
Groups**

**Learning  
Strategies**

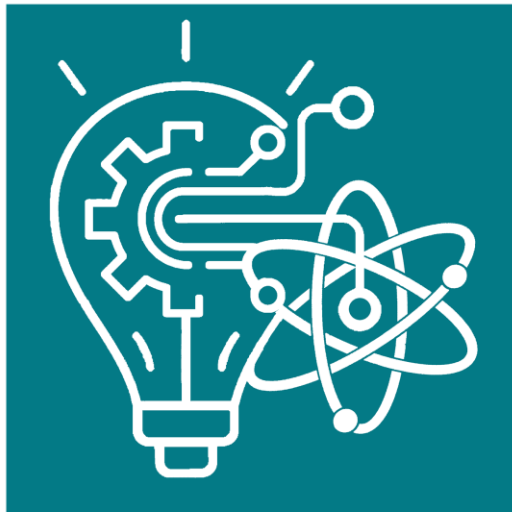
**3rd floor Zimmerman Library**



A tool for  
engineering your

SUCCESS

This web **APP** allows you  
to keep up to date on all  
we have to offer.



Put your learning into your own hands.



[success.unm.edu](https://success.unm.edu)

*Includes 1-click RSVP*



You are **WELCOME** to ALL events



Spring 2023 Events

We are Student Success

**Pre-Semester Prep Series**

Trig/Pre-Calc through Calc 3, Chem 1, Physics 1

**Semester Long Programs**

Mentoring, Internships, Research

**Presentation Prep Series**

What is a Conference?  
Designing Effective Presentations  
Data Visualization  
Delivering Presentations

**1st & 2nd Year Student Events**

STEM Mixer & Find Your Pack  
Study Skills  
Manage Your Time  
How to make the most of your learning  
How to learn from failure  
Intro to Python  
UROC - Attendance Participation  
Coffee hour with Faculty

**Spatial Visualization Series**

Orthographic Views & Isometric Drawing  
One-Axis and Two-Axis Rotations  
Incl. Planes & Curved Surfaces, Reflect. Sym., & Write a Rule

**Career and Professional Development Events**

Resumes and Cover Letters  
Building Connections & Networking  
Landing an internship  
Interviewing Basics  
So, What's Next? Start-Ups, Patents, and Publications  
*...and industry site visits...*

**Lab Safety Series**

Hazard Communication & Hazard Evaluation  
Hierarchy of Controls & Basics of PPE  
Chemical Waste Management

WIN a gift card. **GAIN** experience.  
**BUILD** your skill set. **ENHANCE** your resume.



And more! For more details, visit:  
[ess.unm.edu/events](https://ess.unm.edu/events) OR through our web-app - success

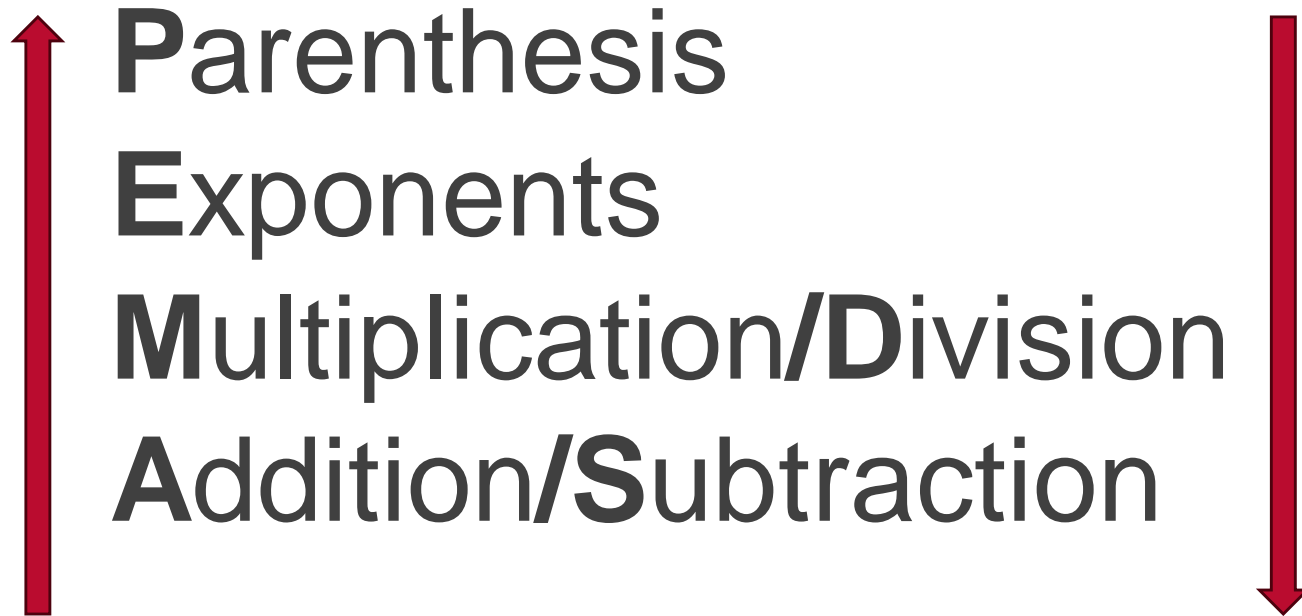
# Contents

---

- Order of Operations
- Fractions
- Solving One and Two Step Equations
- Strategies for Solving Word Problems
- Graphing

# Order of Operations

---



# Order of Operations Tips

---

- After parentheses and exponents, work left to right
  - Multiplication and division are equivalent!
  - Addition and subtraction are equivalent!
- Sometimes parentheses mean multiplication
- Use fraction notation rather than division symbol
  - $\frac{21}{7} = 3$  not  $21 \div 7 = 3$

# Rewrite Equations

---

$$6 \div 2(1 + 2) =$$



# Rewrite Equations

---

$$6 \div 2(1 + 2) =$$

$$\frac{6}{2(1+2)} =$$

$$6 \div 2 \times (1 + 2) =$$

# Fraction Math

---

- Adding/Subtracting Fractions
  - Need a **common denominator**
  - Use special forms of one
- Multiplying Fractions
  - Multiply numerators and denominators straight across
- Dividing Fractions
  - Multiply by reciprocal of divisor
  - **Keep, Change, Flip**
- **Reduce, reduce, reduce!**

# Fraction Math

Adding Fractions

$$\frac{14}{3} + \frac{9}{21}$$

Multiplying Fractions

$$\frac{3}{4} \times \frac{5}{6}$$

Dividing Fractions

$$\frac{1}{2} \div \frac{4}{3}$$

# Solving Equations

---

- Use Reverse Order of Operations
  - Addition/Subtraction
  - Multiplication/Division
  - Exponents
  - Parentheses
  
- “Unwrapping” the variable

$$3x+4(1+x)=25$$

---



# Strategies for Solving Word Problems

---

1. Understand the problem
2. Gather information
  1. Represent numbers with variables
  2. Write a mathematical expression
3. Solve the problem
4. Check your work

# 1. Understand the problem

---

The rate to rent a car is \$30 per day, plus 50 cents per mile. Carlos rented a car for his 2-day long vacation. When he returned the car, the bill was \$360. How many miles did he drive?

## 2. Gather Information

---

The rate to rent a car is \$30 per day, plus 50 cents per mile. Carlos rented a car for his 2-day long vacation. When he returned the car, the bill was \$360. How many miles did he drive?

# 3. Solve the Problem

---

The rate to rent a car is \$30 per day, plus 50 cents per mile. Carlos rented a car for his 2-day long vacation. When he returned the car, the bill was \$360. How many miles did he drive?

## 4. Check your work

---

The rate to rent a car is \$30 per day, plus 50 cents per mile. Carlos rented a car for his 2-day long vacation. When he returned the car, the bill was \$360. How many miles did he drive?



# Graphing

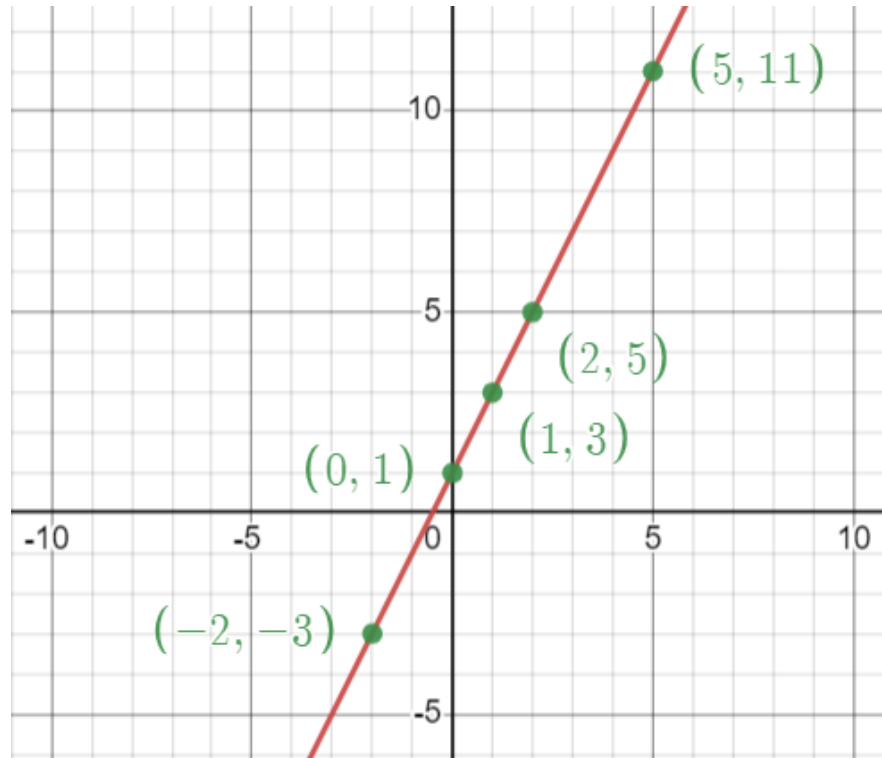
---

- XY table
- Point/slope
- Important Points
- $y=mx+b$

# Using an XY Table

---

x	y
-2	-3
0	1
1	3
2	5



# Graphing Using Point and Slope

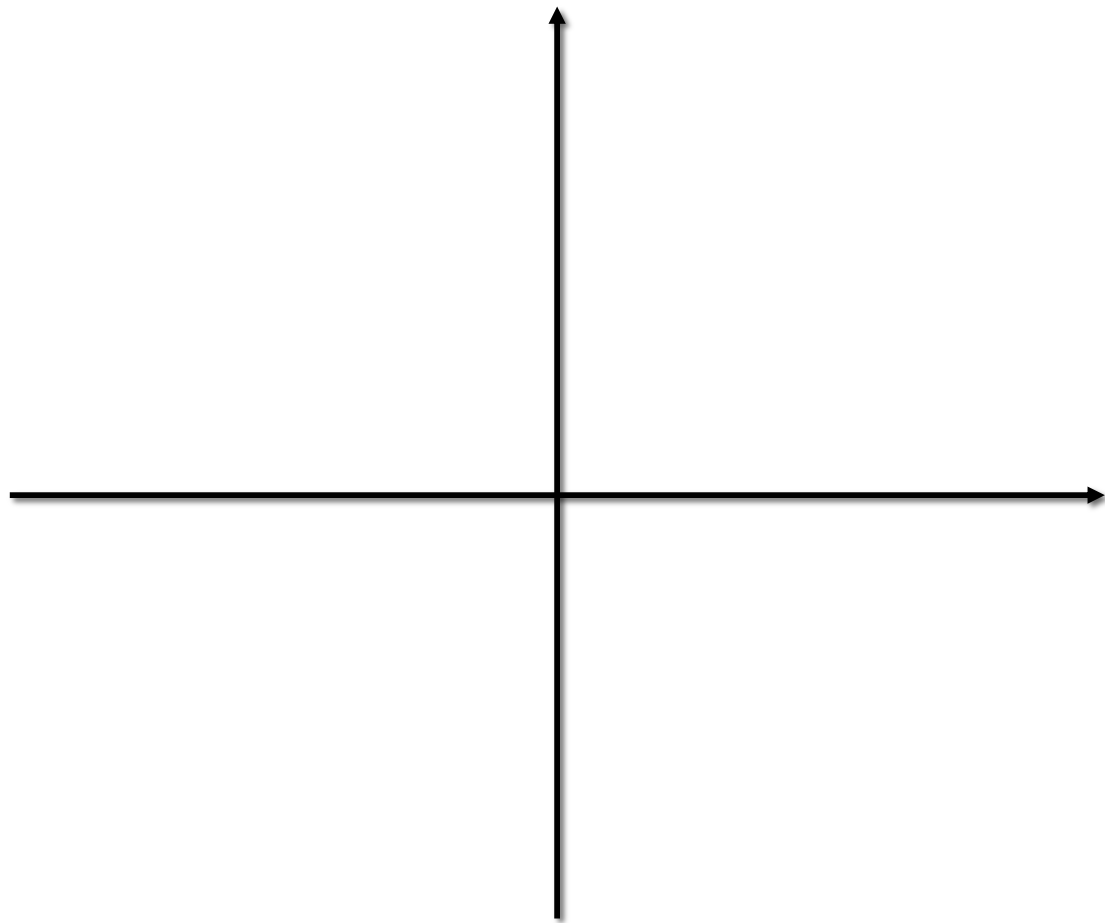
---

- “Rise over run”

- $\frac{2}{3}, \frac{-1}{4}, 7$

- Slope:  $\frac{y_2 - y_1}{x_2 - x_1} (x_1, y_1), (x_2, y_2)$

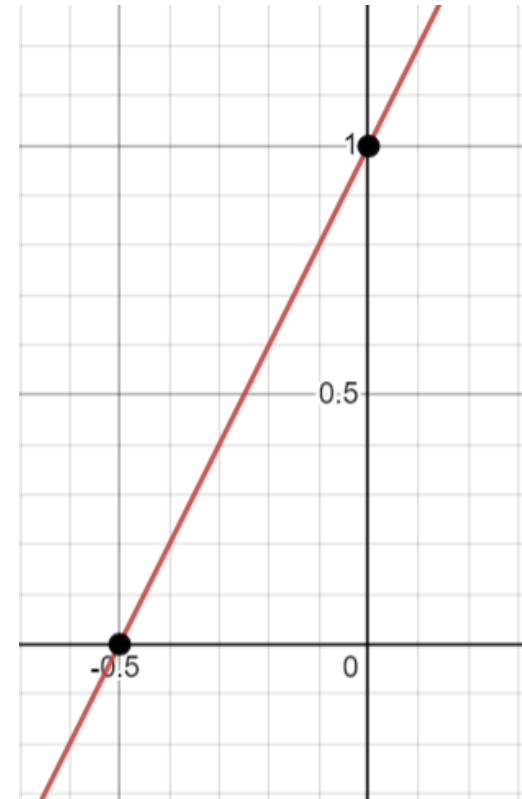
- Calculate the slope of the line that goes between the points
    - (1,3) and (4,12)
    - (5,10) and (0,25)



# Important Points

---

- Y-intercept
  - $x=0$
  - where the line crosses the y-axis
- X-intercept
  - $y=0$
  - where the line crosses the x-axis





# Finding Intercepts

---

$$y = 2x + 1$$

# Putting it all together

---

- Equation of a line:  $y = mx + b$
- $m$  = slope
- $b$  =  $y$  intercept

Graph the equation  $y = -x + 4$

---

# Study Tips

---

# What you can do before the semester

Mentality	Be proactive
Review	Review the self-evaluation
Explore	Explore online resources
Converse	Talk to your professor and TA
Locate	Find resources on campus, such as CTL and tutoring
Study	Form a study group, develop a study plan



# Throughout the semester

---



GO TO CLASS



STAY ON TOP OF HOMEWORK



GO TO PROFESSOR AND TA  
OFFICE HOURS, CTL, CALC  
TABLE.

# Start Your Semester Off Right

## Join us for a **FREE**

### Pre-Semester Prep Workshop Series

These interactive workshops will review all foundational material leading up to the specified course so you are better equipped to hit the ground running.

Synchronous in-person in the ESS suite  
& virtual via Zoom

College Algebra Prep	Wednesday, January 10, 2024	1 - 3 PM
*Pre-Calc/Trig Prep	Monday, January 8, 2024	10 AM - 12 PM
*Calc 1 Prep	Tuesday, January 9, 2024	10 AM - 12 PM
*Calc 2 Prep	Wednesday, January 10, 2024	10 AM - 12 PM
Calc 3 Prep	Thursday, January 11, 2024	10 AM - 12 PM
<i>Math working session</i>	Thursday, January 11, 2024	1 - 3 PM
Chem 1 Prep	Friday, January 12, 2024	10 AM - 12 PM
*Physics 1 Prep	Friday, January 12, 2024	1 - 3 PM

\*Attend these sessions & give feedback for access to a general knowledge exam.

RSVP is preferred but not required



[ess.unm.edu/events](https://ess.unm.edu/events) > January

or through our web-app - [succESS](#)



# Questions?

Give  
feedback.

Win a gift  
certificate!



Don't forget to follow  
up on social media.



[goto.unm.edu/ess-feedback](https://goto.unm.edu/ess-feedback)



[ess.unm.edu](https://ess.unm.edu)

or

our succESS web-app

