



## Division of Student Affairs

### 2008 Campus Projects Student Life Master Plan

- ❖ Student Recreational/Johnson Center
- ❖ Student Enrichment Center
- ❖ Student Housing and Dining Services
- ❖ Children's Campus for Early Education
- ❖ Cornell Mall & Smith Plaza Enhancement
- ❖ Student Union Building Phase II Expansion

Summer 2008



## Student Life Master Plan



### Vision & Purpose

To create an engaging environment  
supportive of student and community  
life on campus for today and tomorrow.

~Aligned with President Schmidly's  
Framework for the University of New Mexico.





## President's Framework for UNM

### Focus on Student Success

- ❑ Getting students to connect/bond is essential for student success
- ❑ Beauty of the campus and comfort of student life on campus is vital
- ❑ Students living on and off campus must be able to seamlessly feel good about the ability to engage in campus life

~Taken from  
**UNM in the 21st Century**  
A New President's Vision  
David J. Schmidly



## UNM Student Life Master Plan

The Student Life Master Plan is designed with the following elements in mind:

- ❑ Opportunity to enhance and improve current facilities that are old and outdated and provide students of today the ability to enjoy fully integrated services, activities and facilities.
- ❑ Student recruitment, retention and graduation rates will increase through an enhanced overall campus experience.





## Division of Student Affairs



## Student Recreational/ Johnson Center



## Current Conditions

"The current trend for universities comparable to ours is to create a stand-alone recreational center.

The enlargement of our current fitness facilities at Johnson Center with expanded hours and a possible outdoor swimming pool can help create much-needed additional extracurricular programs and services for our students."

An opportunity to create **one great student facility** that can be used as a signature building to recruit and retain students. Part of this process involves the University's current plan for a new student recreation center.

-Taken from  
**UNM in the 21st Century**  
A New President's Vision  
David J. Schmidly





## Need for New Recreational Center

- ❑ Our recreational facilities don't meet the needs of today's UNM student and are not in accordance with National Intramural-Recreational Services Association (NIRSA) standards.
- ❑ Enhancement of recreational facilities on campus, will lead to a greater sense of community and engagement among students and will contribute to higher recruitment, retention and graduation rates for UNM students.



## Formation of Student Housing & Recreation Committee (SHRC)

Based on President Schmidly's vision for the University and goals for recreational facilities at UNM, the Student Housing & Recreation Committee, made up of faculty, staff and students, was formed to work on addressing various recreational issues.





## Issues

**Johnson Center is currently shared by College of Education, Employee Health, Recreational Services and Athletics Departments which doesn't allow for adequate access and recreational programs.**

### FOCUS

1. What recreational services and facilities do we provide and how accessible and available are they?
2. What would the students want to make One Great Student Facility?
3. Develop gap analysis from information gathered regarding academic and student needs/demands
4. Determine if existing space can be utilized or reorganized and determine feasibility of new stand-alone facility.
5. Make recommendations for existing facility including reconditioning and/or renovating the current facility.



## Top 10 Student Requests

1. More access, longer hours of open workout times
2. Separate weight rooms for classes & recreational use
3. More natural light
4. Healthier food choices (i.e. food court, juice bar, more vending choices)
5. More areas for students to congregate and socialize
6. More welcoming, less intimidating facility
7. Better technology (i.e. treadmills with TV's)
8. Climbing wall
9. Indoor running track
10. Outdoor pool

Source: Student Focus Groups and Campus Survey (Feb. 2008)





## Division of Student Affairs



### Student Enrichment Center

(a.k.a. Main Campus Student Services/Success Center)



## One-Stop User Friendly Facility

- Renovation/reconstruction
  1. Mesa Vista Hall
  2. Student Health & Counseling (SHAC)
  3. Student Services Buildings
- Single facility rather than three.
- Student and academic services in one place that is easy to access and navigate.
- Positive impact on day-to-day services for undergraduate and graduate students.



# #1 Mesa Vista Hall Current Condition



Corridor in Mesa Vista Hall

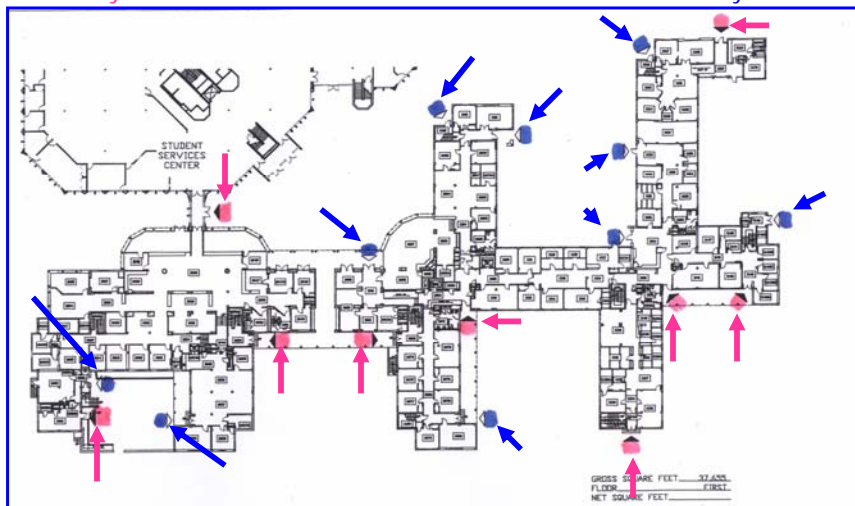
- ❑ Accessibility Services department is on the 2<sup>nd</sup> floor and not conducive to students with disabilities
- ❑ Safety problems
- ❑ Dim lighting
- ❑ Deteriorating walls and ceilings
- ❑ High energy and maintenance costs
- ❑ Unappealing environment
- ❑ Limitations for technological advancements
- ❑ This is the first resident hall built in the early 1950s and has not been modified from its original student residence design.



# 19 Entrances on Mesa Vista Hall 1<sup>st</sup> Floor without a "main entrance" makes navigation difficult

9 Primary Entrances

10 Secondary Entrances



## #2 Student Health & Counseling (SHAC) Current Condition

- ❑ Student Health & Counseling has outgrown its space.
- ❑ Students currently do not have privacy in reception areas and public areas.
- ❑ Since 1968 our enrollment numbers have increased from 15,000 to over 25,000, yet medical exam rooms, procedure rooms, pharmacy, testing and public areas have not been updated to provide a higher quality of medical care for students.



Interior of Student Health & Counseling

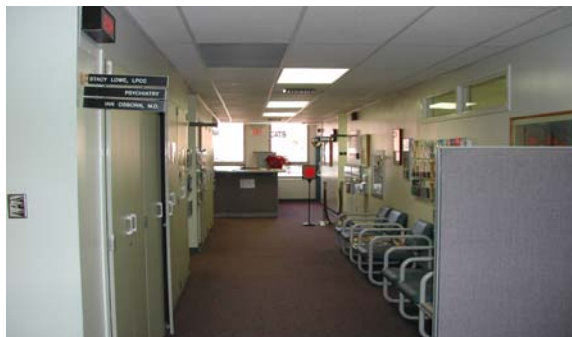


## SHAC Current Condition

Lack of privacy for students seeking mental and emotional help Counseling & Therapy Services (CATS).

leads to

Student avoidance in seeking vital mental and emotional health care.



Interior of Student Health & Counseling



### #3 Student Services Building Current Condition

- ❑ The inadequate design of the current Student Services Building is not conducive to “one-stop” concept.
- ❑ Departments are placed not adjacent to each other but at the far ends of the facility.
- ❑ Interconnection from Mesa Visa to Student Services is far from user-friendly.
- ❑ The general design does not represent the current Southwest design of other buildings and is dimly lit and reinforces walking in circles.



### Division of Student Affairs



### Student Housing and Dining Services





## Current Condition

- ❑ Old structures have remained unchanged since its opening.
- ❑ Outdated designs don't meet current student life style.
- ❑ Many structures are not ADA accessible.
- ❑ Minimum land space to build on Main Campus.
- ❑ Inventory has not grown according to student population.
- ❑ LaPosada Dining facility built in 1966. Infrastructure accessibility and design are not current.
- ❑ Structures not accessible for students with disabilities.



## Goals

### Improve our inventory

Improve campus housing and dining options for students through:

- ❑ Renovation
- ❑ Remodeling
- ❑ Replacement of existing housing and dining facilities





## Implementation Phases of Housing Development

### Phase I

- ❑ Development of 1000 beds targeted at 1<sup>st</sup> and 2<sup>nd</sup> year undergraduate students
- ❑ Establish an honors program housing component

### Phase II

- ❑ Improvements to traditional halls at key campus locations
  - ❑ Acquire the remaining half of Hokona and return it to student residents and also address the needs and location of Greek housing

### Phase III

- ❑ Develop new apartment-style beds for students beyond their second year, graduate, professional and married housing
  - ❑ Scheduled for opening in Fall 2011



## Additional Housing Strategies & Surveys

- ❑ Investigate public-private partnerships to accommodate remaining difference between bed demand and supply.
- ❑ Additional housing should be considered to meet remaining bed demand.
- ❑ Re-evaluate housing demand periodically to assess impact of implementation phases.





## Division of Student Affairs



### Children's Campus for Early Education

(Child Care Center)



## Current Condition

- ❑ Consistently maintains a high number of families on its waiting list (currently 600).
- ❑ Children 2 years old and younger constitute the highest number of those yet to be enrolled.
- ❑ Children under 3 years old total approximately 79% of the list.
- ❑ Campus maintains roughly a 10% attrition rate with each infant classroom.
- ❑ Approximately 90% of children who begin the program as infants continue on into the preschool classrooms.





## Expansion

Expanding number of classrooms required to address the current needs specific to approximate costs of facilities, equipment and staffing:

- ❑ Address the overall needs on campus
- ❑ Creating an aesthetically pleasing and safe environment
- ❑ Maintaining optimum classroom square footage and ratios
- ❑ Continue maintaining a high level of professionalism, staff development and appropriate staffing



## Division of Student Affairs



### Cornell Mall & Smith Plaza Enhancement





## Current Condition

### Physical Design Findings

- ❑ Several underutilized spaces and pathways along the mall.
- ❑ Most of the buildings are similar in height but there is room to expand vertically.
- ❑ Few people use the Cornell Mall during the evening while thousands pass through during the daytime hours.



## Research Findings

### Focus Group/User Voice Priorities

- ❑ Bike racks
- ❑ Organized events and across campus info. sharing
- ❑ Better lighting, seating and shading
- ❑ More healthy food options
- ❑ Less concrete, more urban gardens
- ❑ More art and visual elements
- ❑ Better access for pedestrian traffic
- ❑ Better signage and wayfinding

Source: Community & Regional Planning Advanced Planning Studio, Fall 2007





## Enhancement

Cornell Mall should be the welcoming pathway for students, parents and visitors when arriving at UNM. The Mall starts at the UNM Bookstore and goes north by Johnson Center, the SUB, Students Services and west to Smith Plaza and Zimmerman Library.

### Enhancing the Mall would:

- Provide a gateway for academics and student life that is a welcoming pleasant community area.
- Improve quality of open space, pathways and plazas.



## Division of Student Affairs



## Student Union Building Phase II Expansion





## SUB Recommendations

- ❑ Complete 2003 Restructuring modeling of a 1959 structure.
- ❑ Increase space for student organizations, large events, meetings and retail.
- ❑ More opportunity to provide computer labs, study areas, social connections and enhanced student activities.
- ❑ Need to add 60,000 square feet to service a population of 27,000 students.



## In Summary...

By creating an engaging environment supportive of student and community life on campus for today and tomorrow, recruitment, retention and graduation rates will be increased and the overall campus life for students will be greatly improved.

