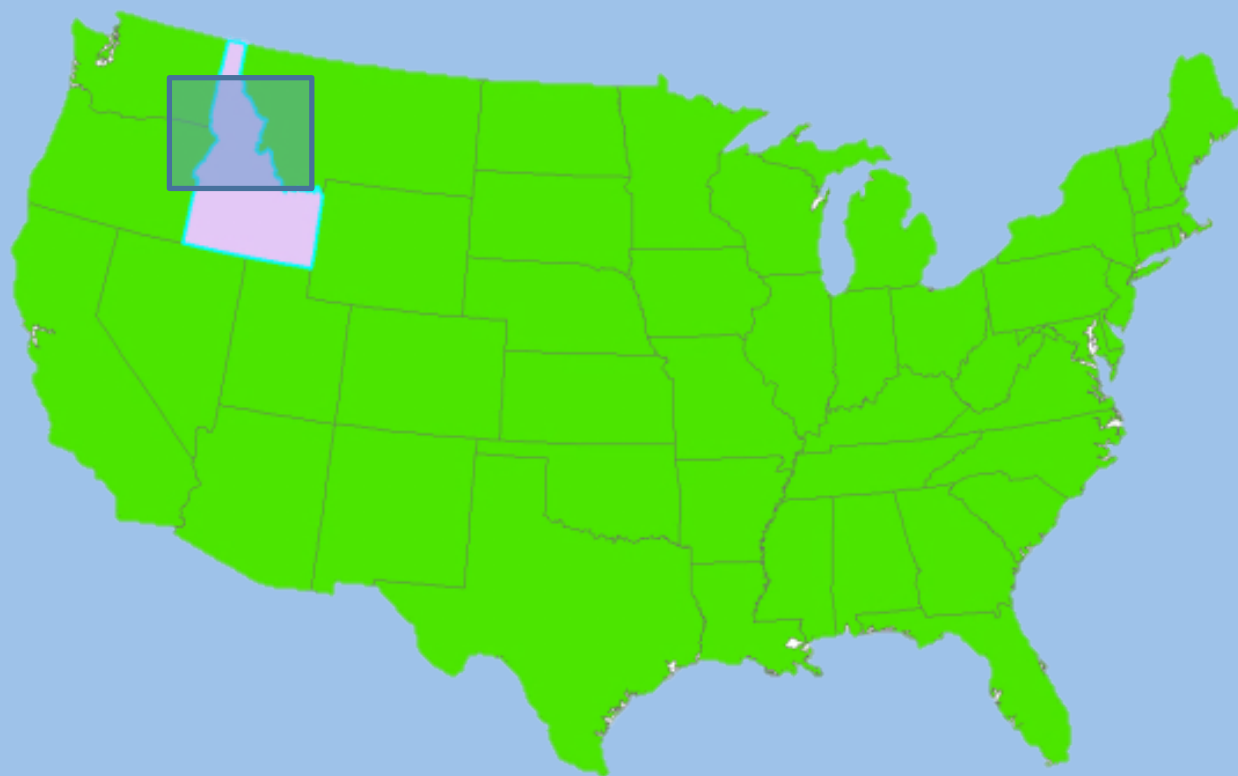


Northern Idaho





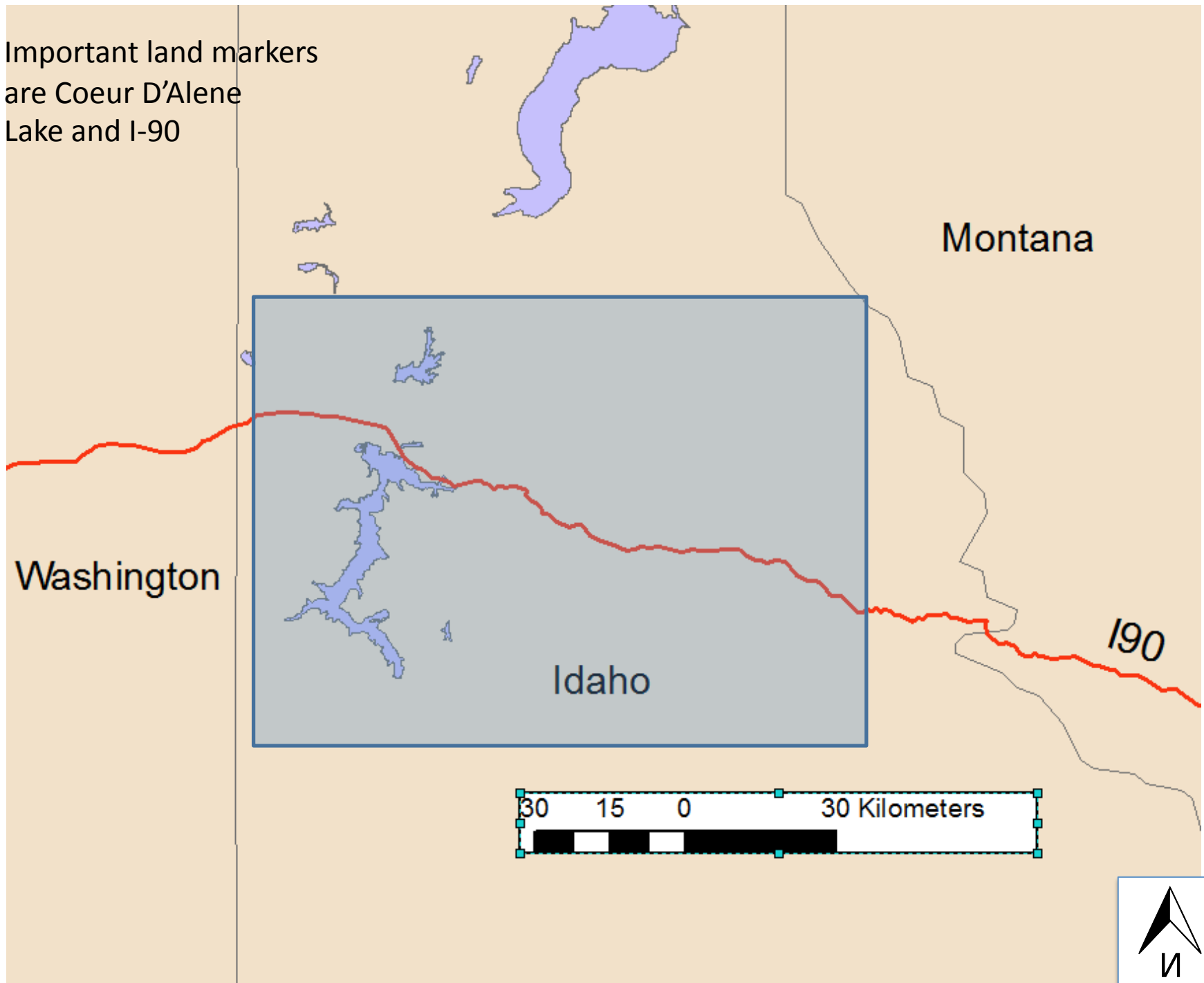
Washington

Montana

Idaho

Oregon

Important land markers
are Coeur D'Alene
Lake and I-90



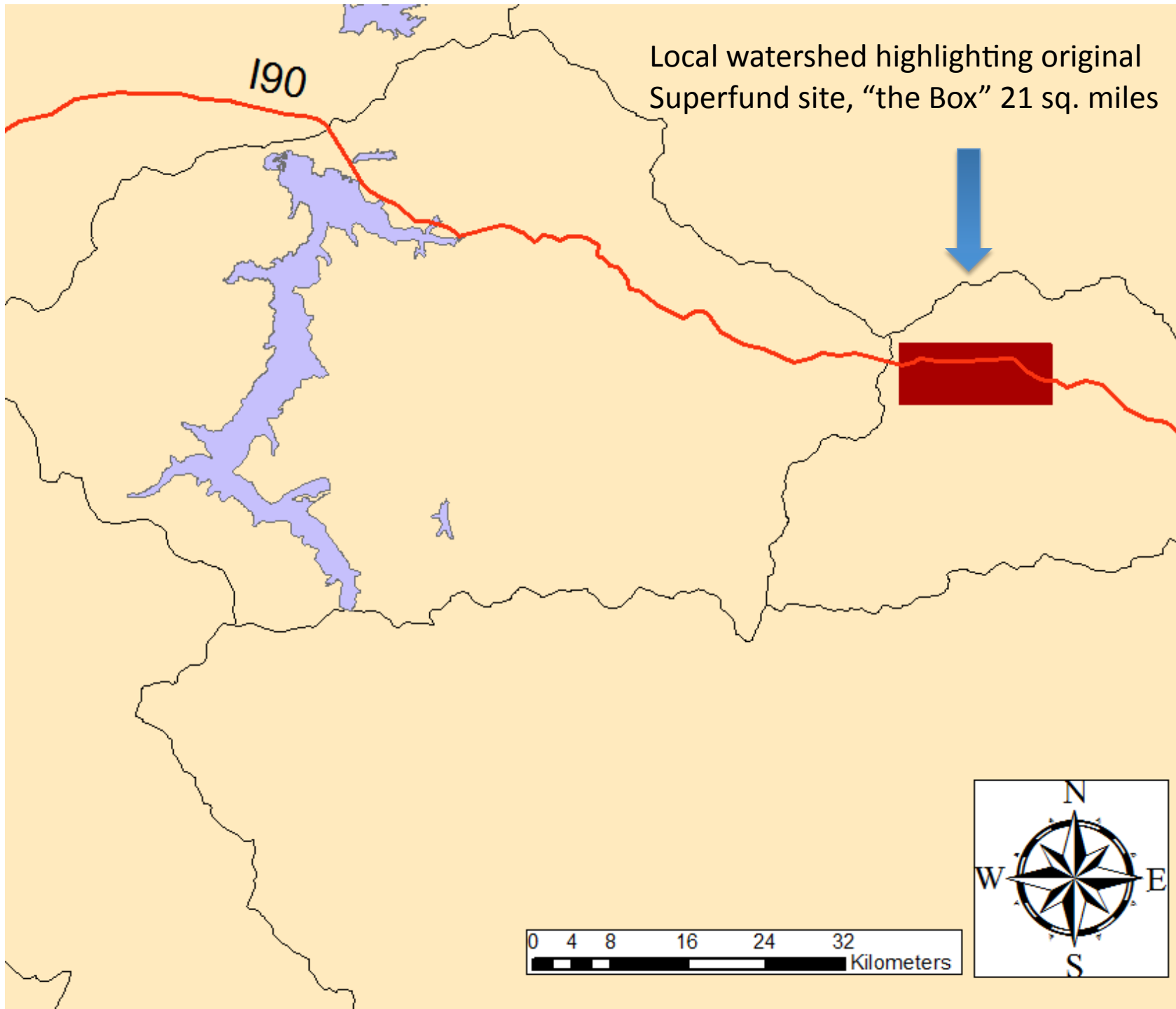
Montana

Washington

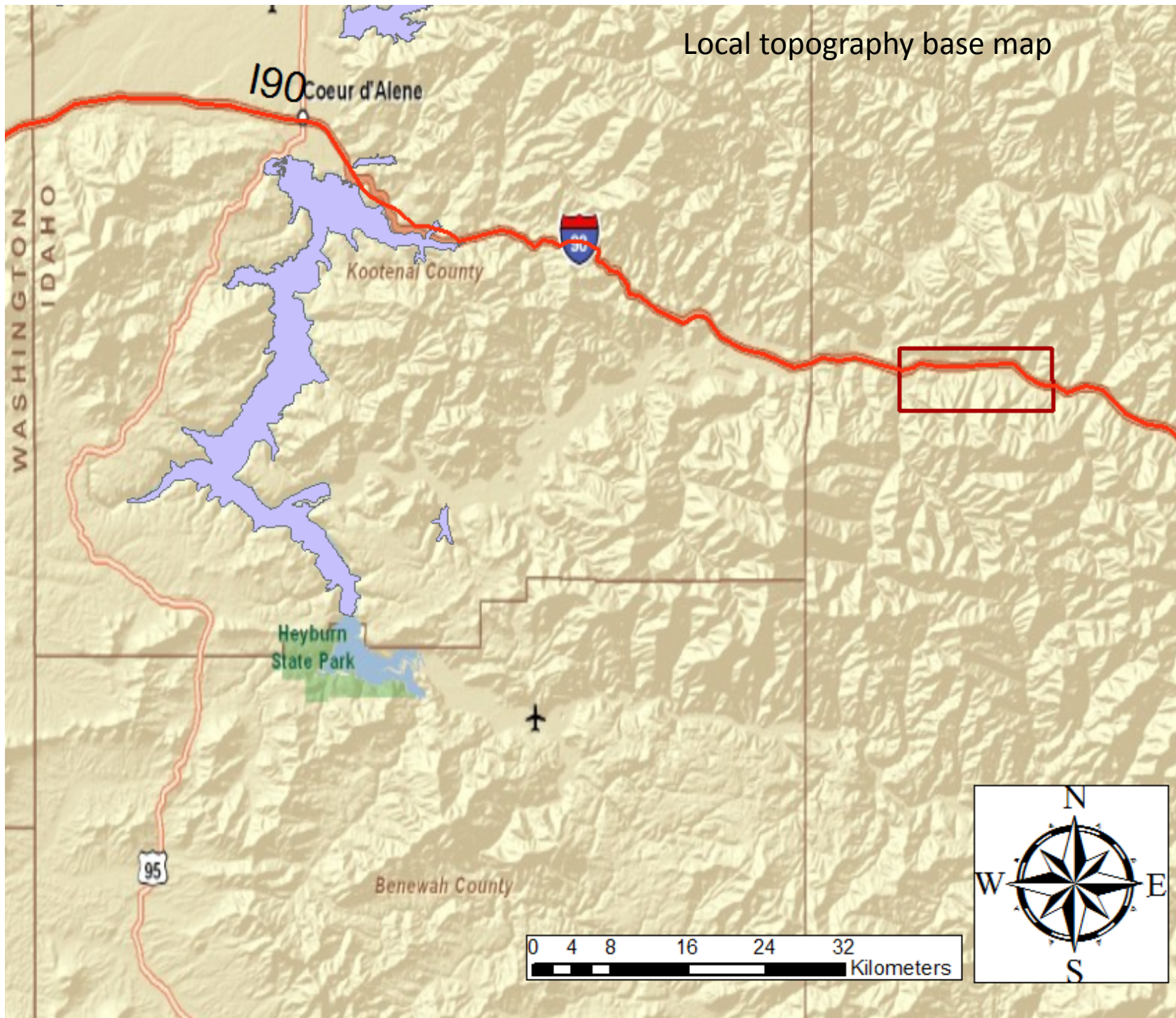
Idaho

I90

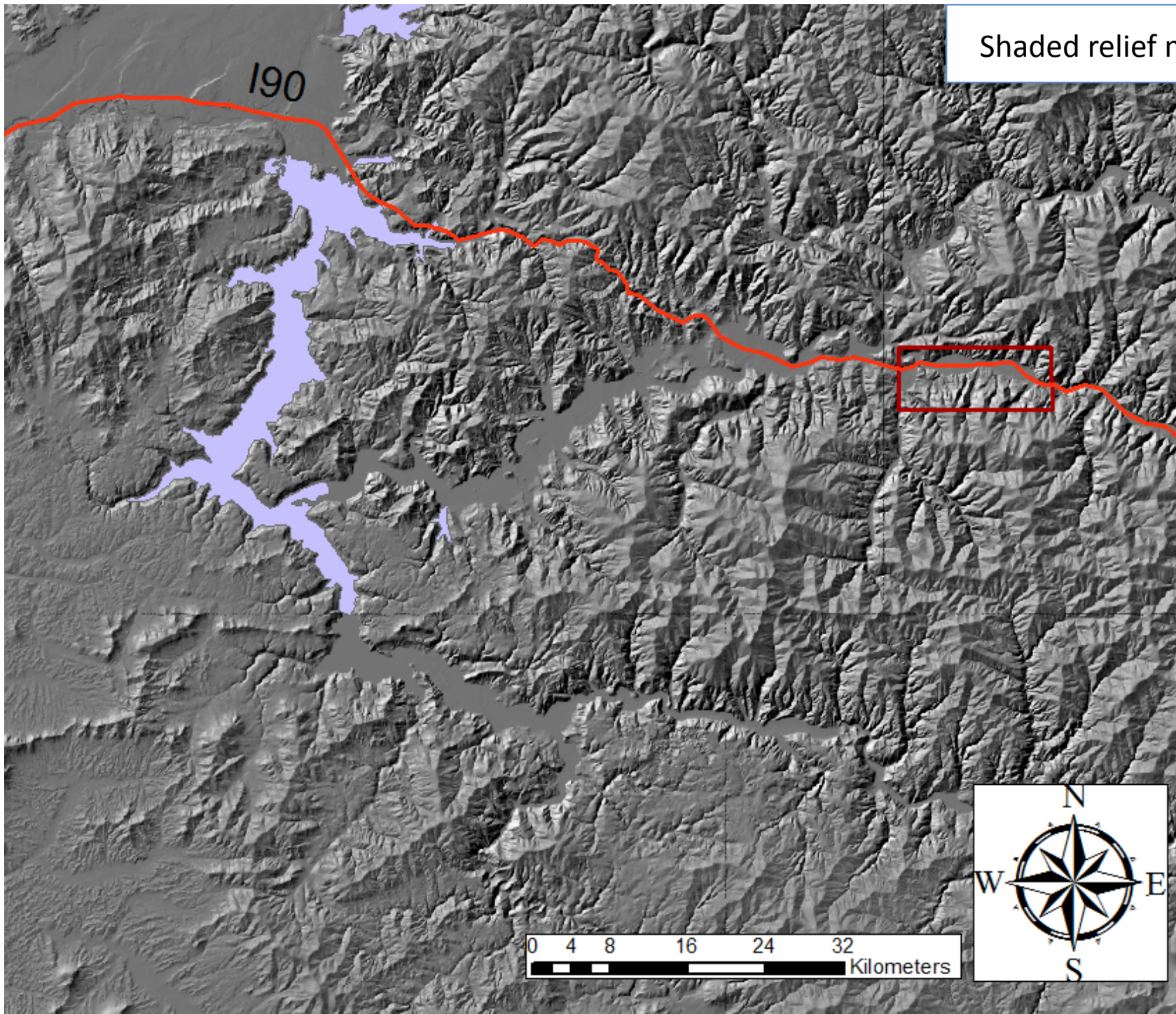




Local topography base map

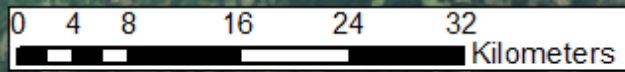


Shaded relief map

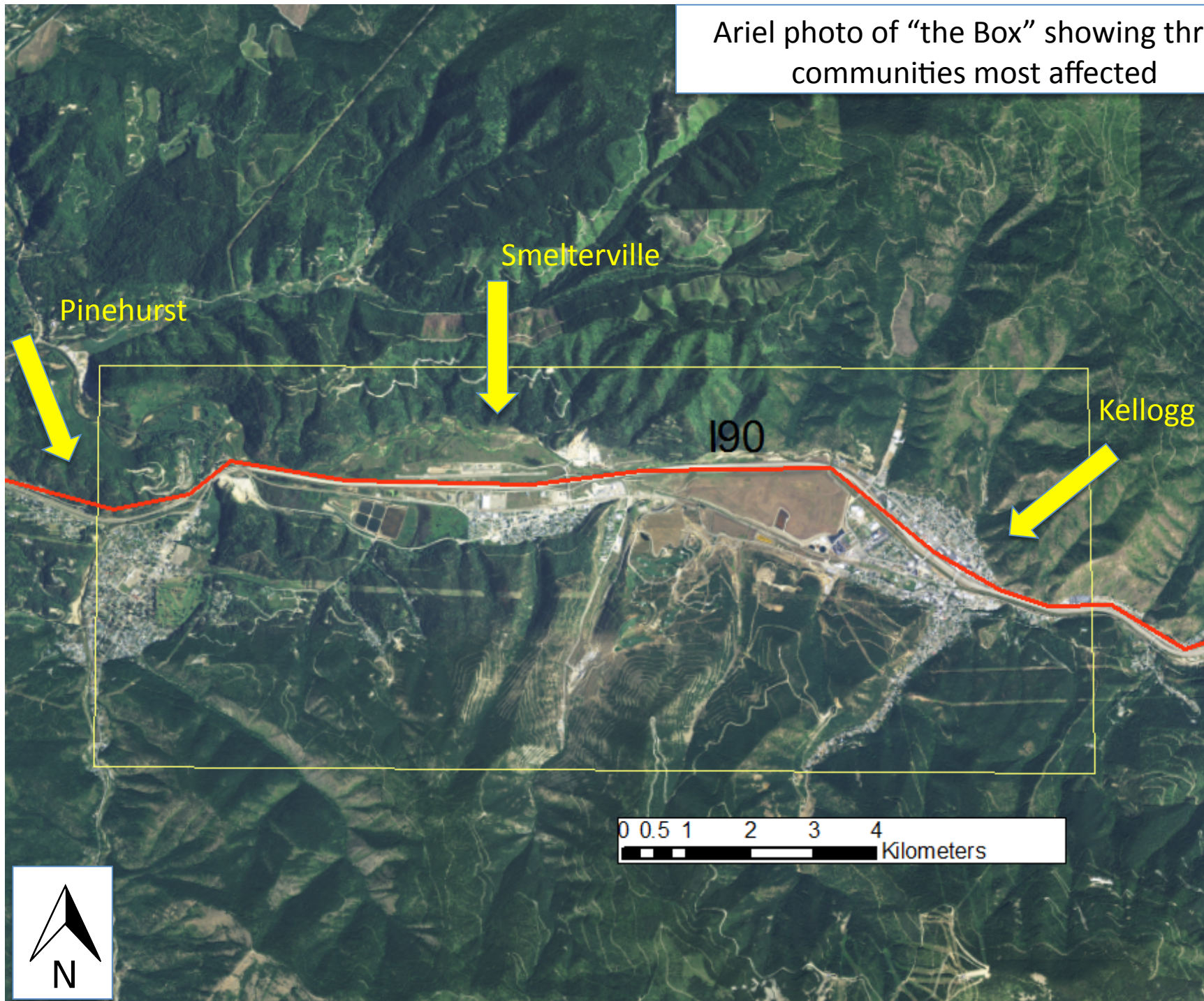


LSAT Image

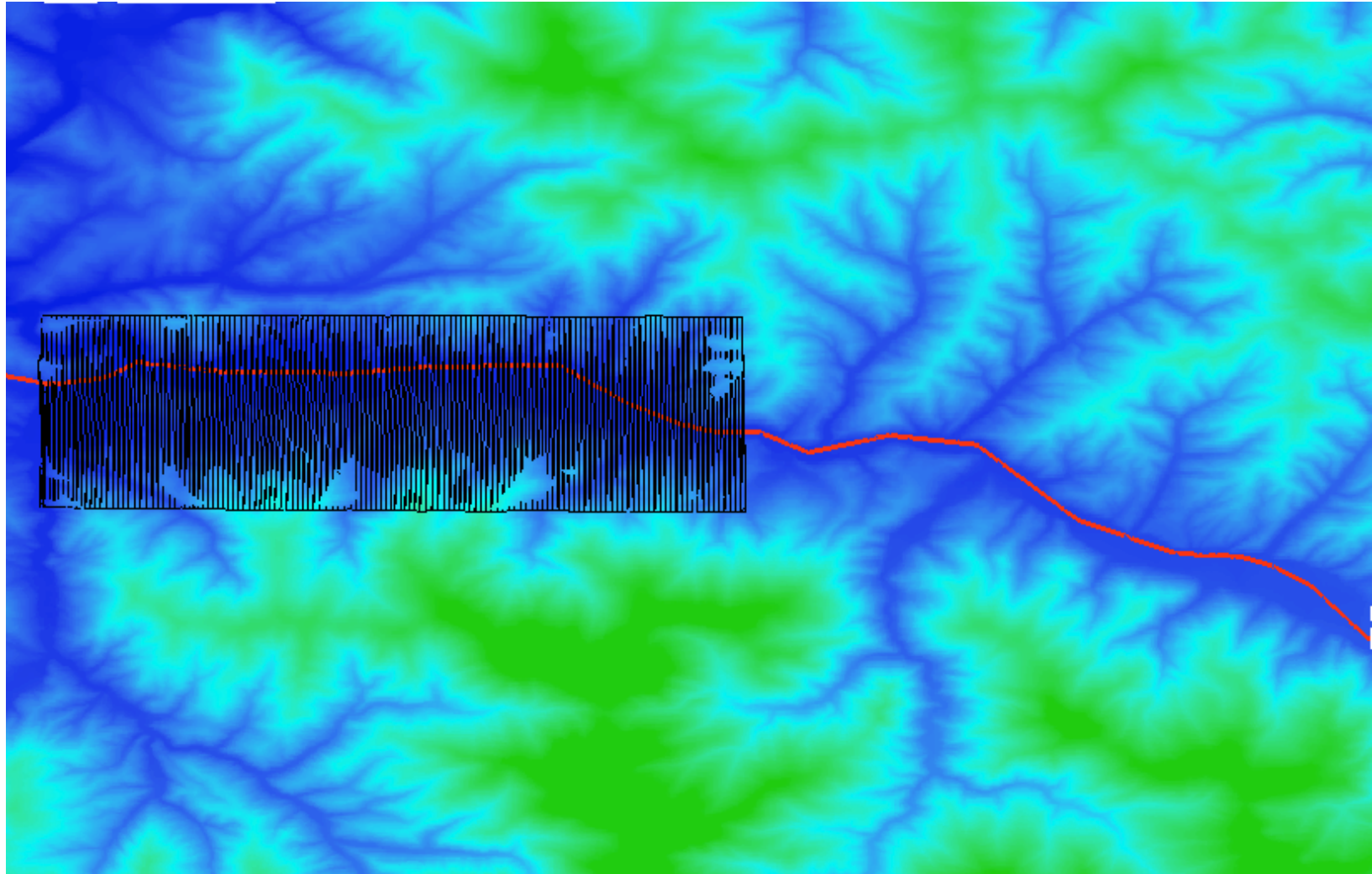
190

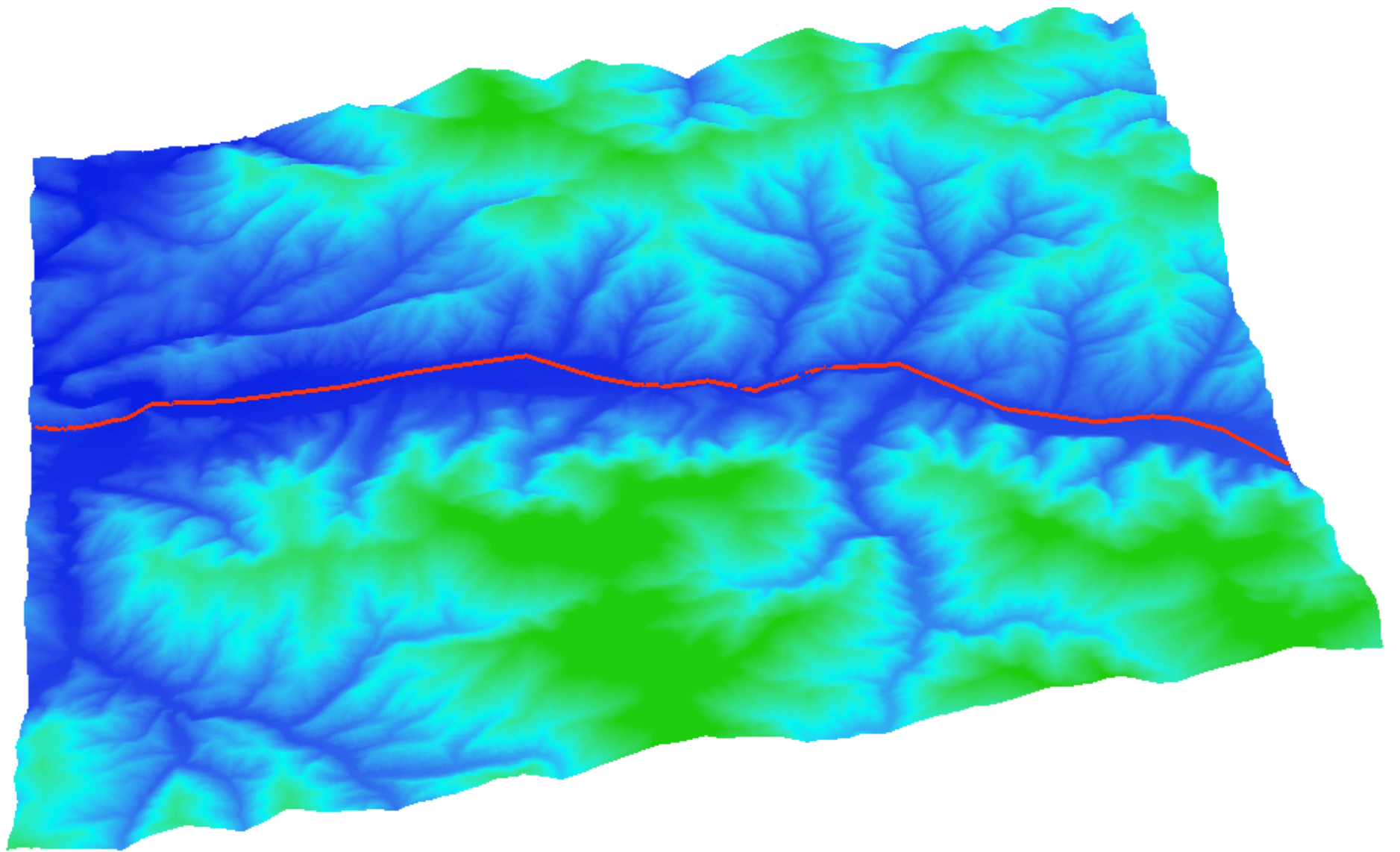


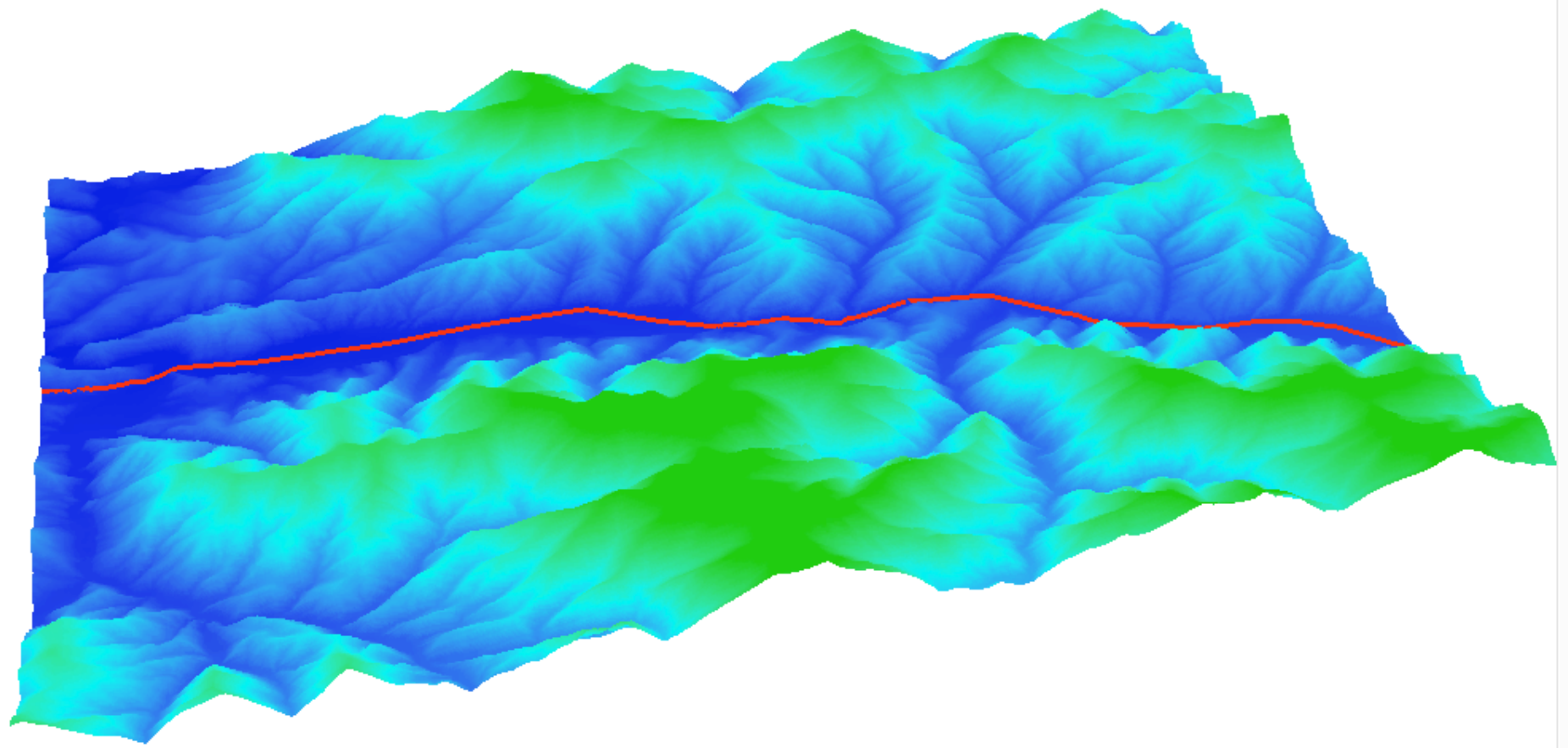
Ariel photo of "the Box" showing three communities most affected

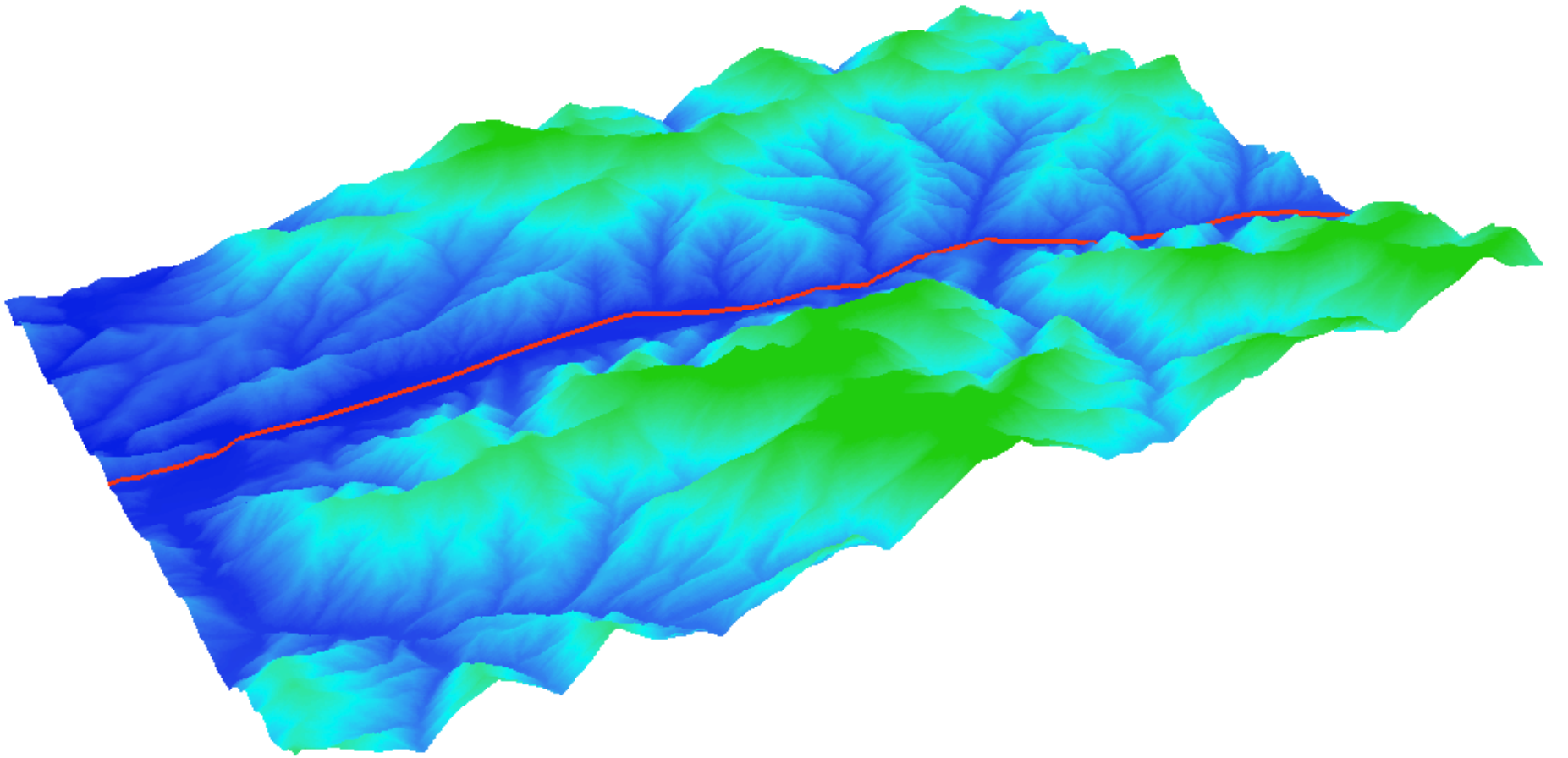


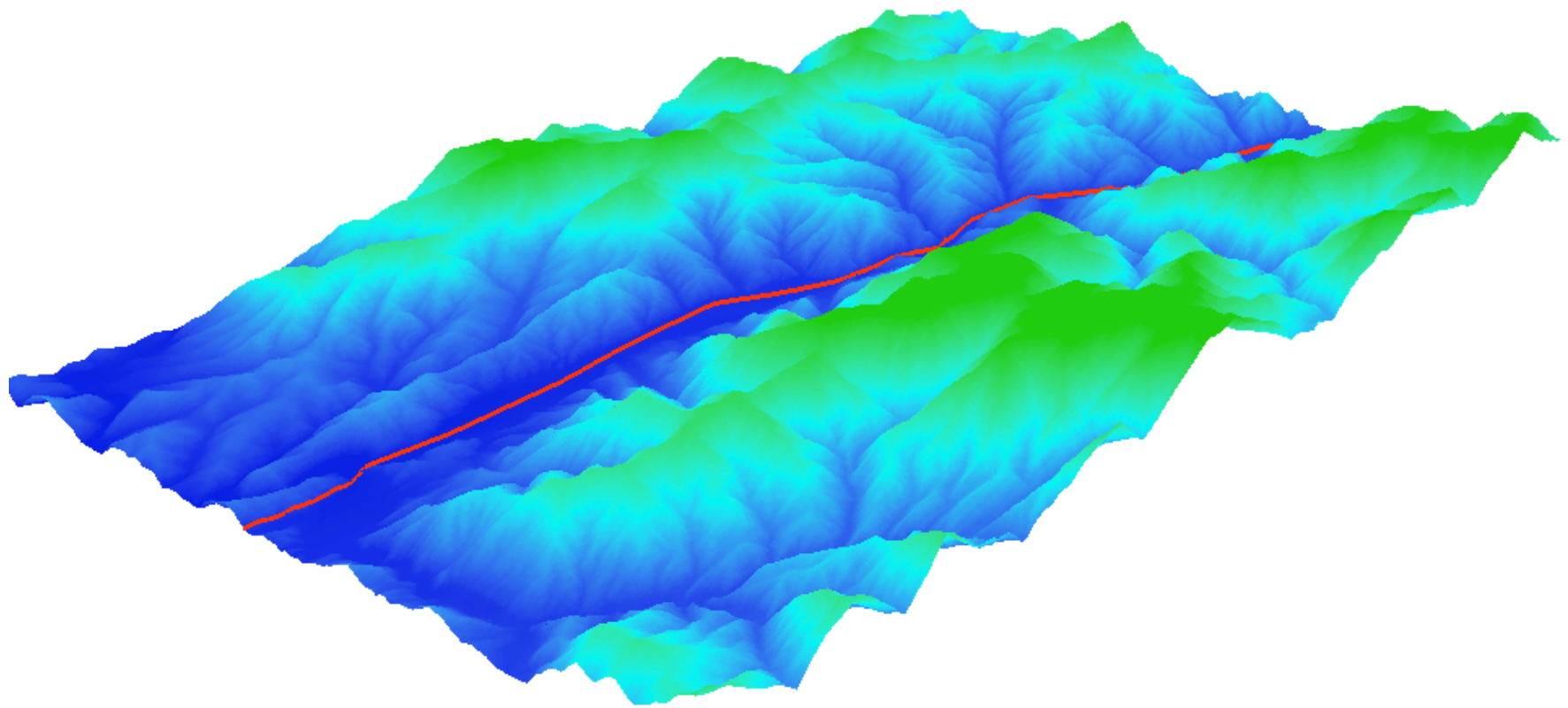
3d animation showing the location of the box in reference to to canyon

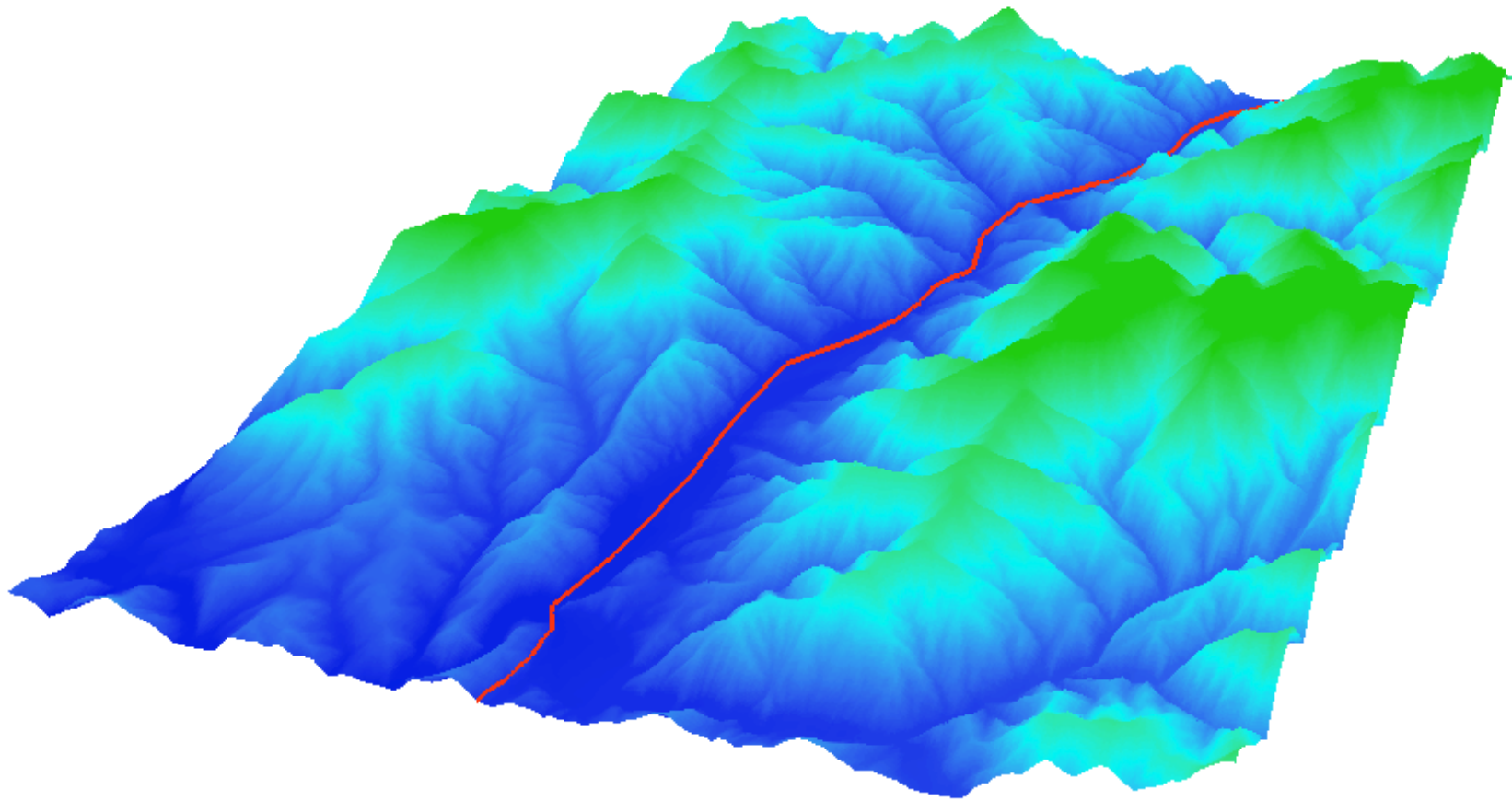


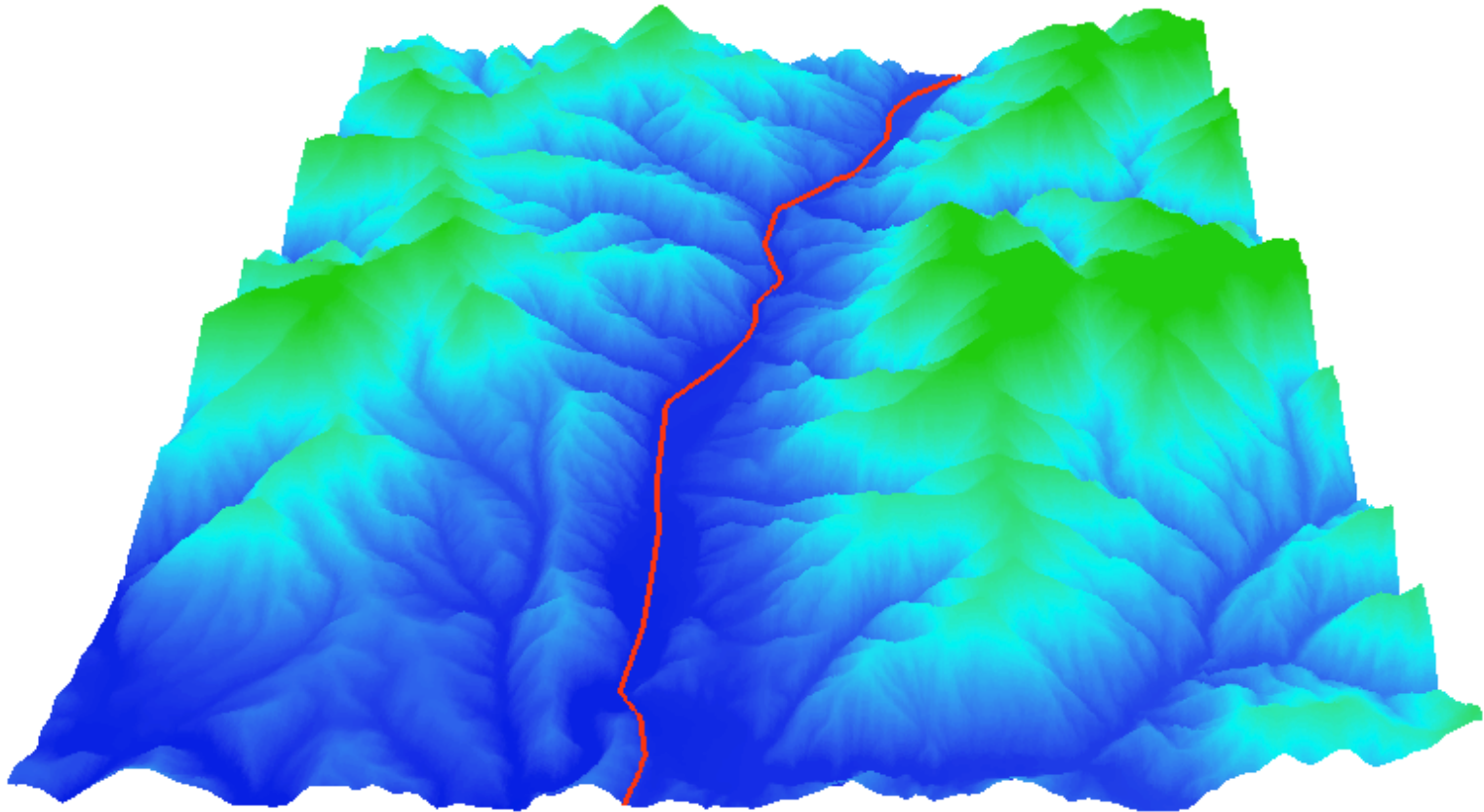


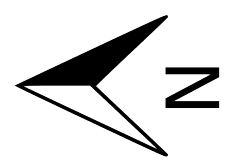
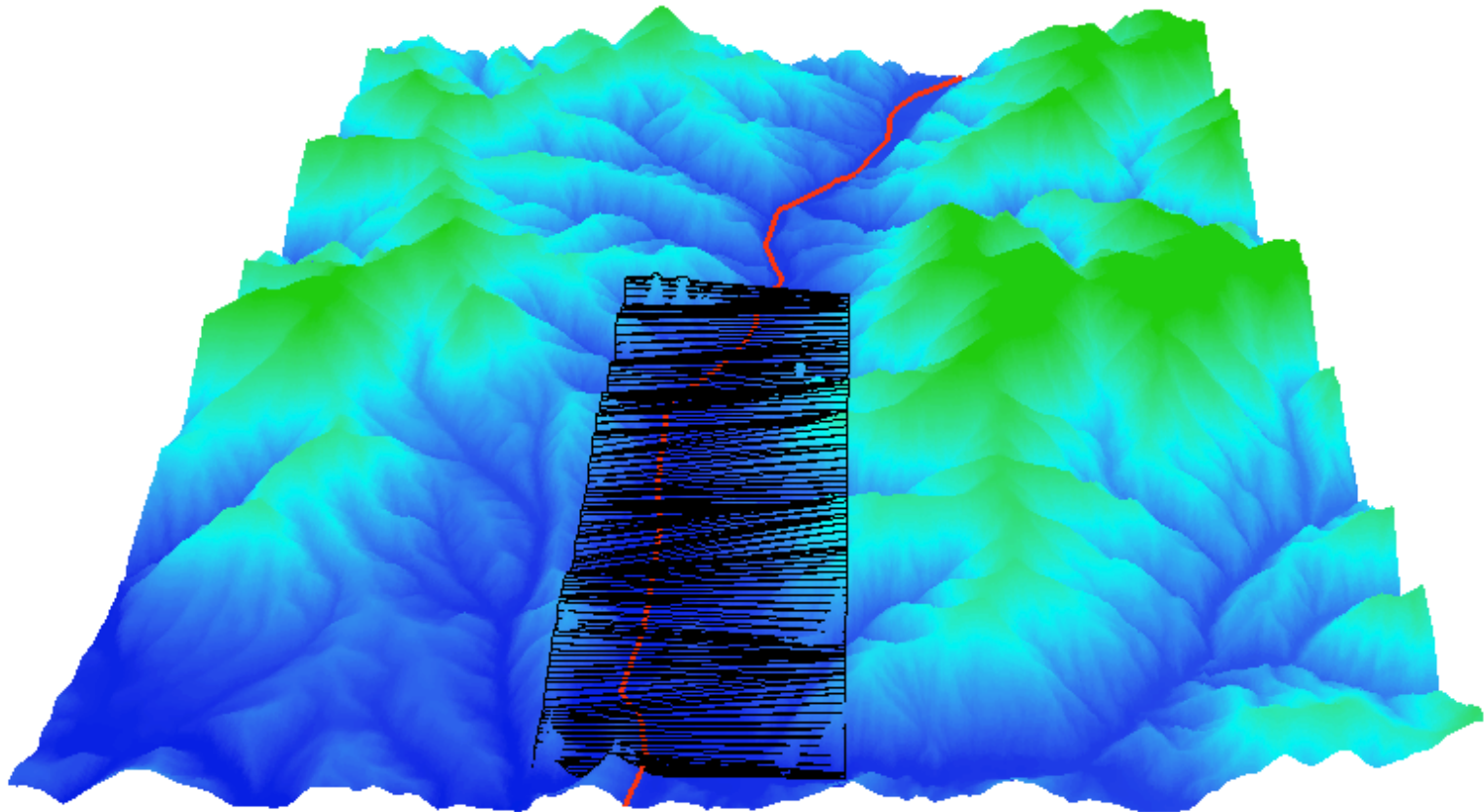


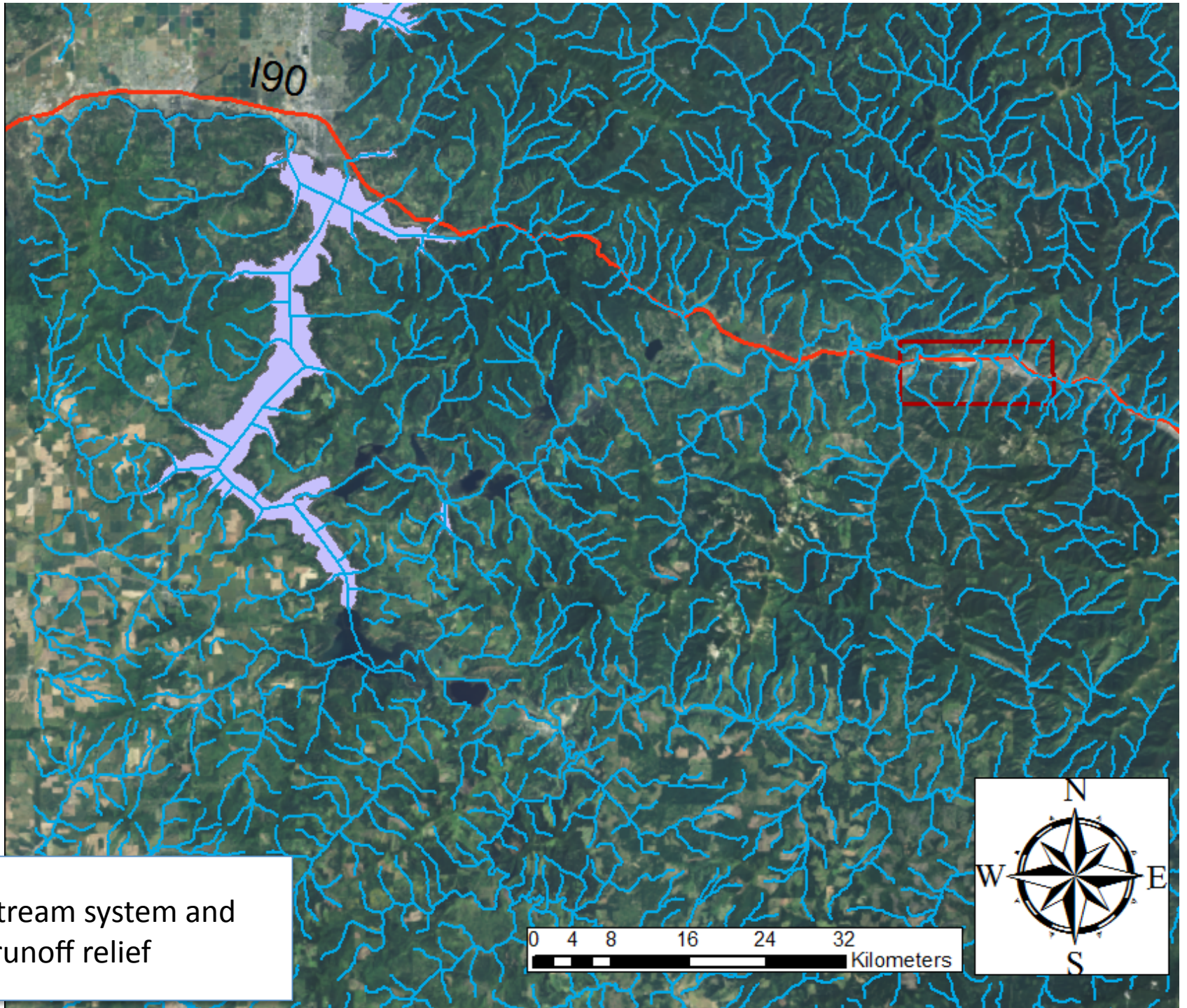






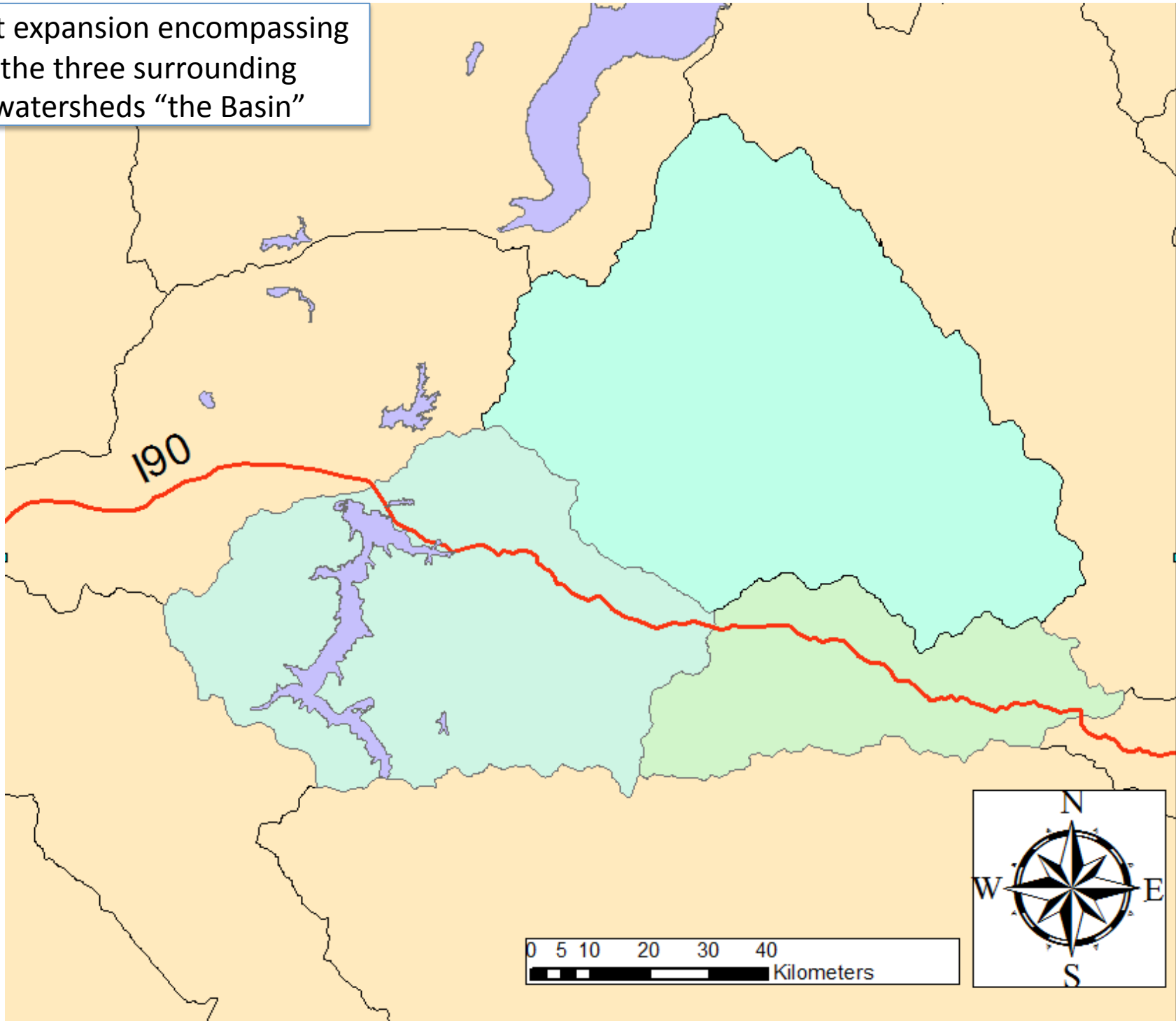


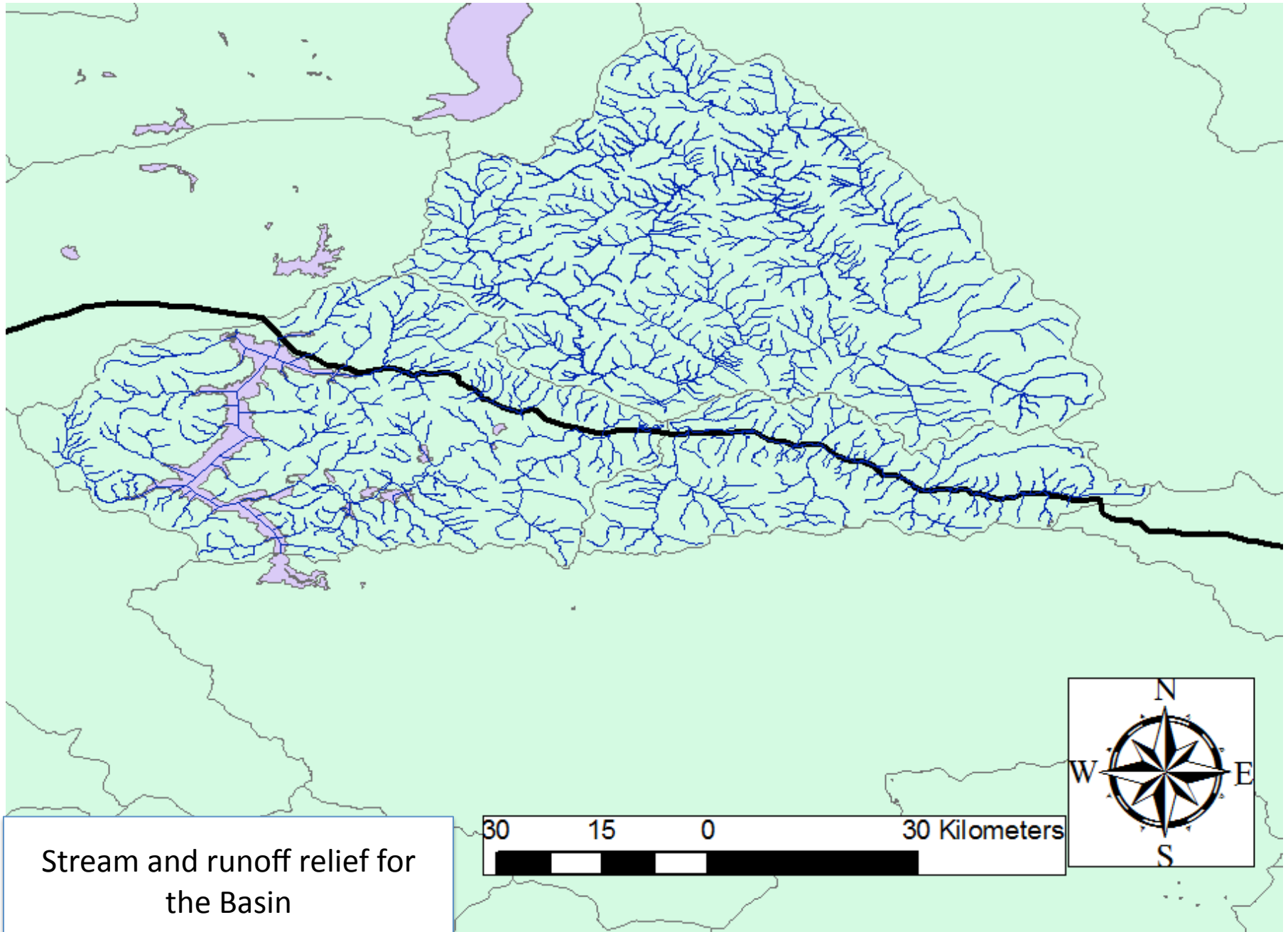




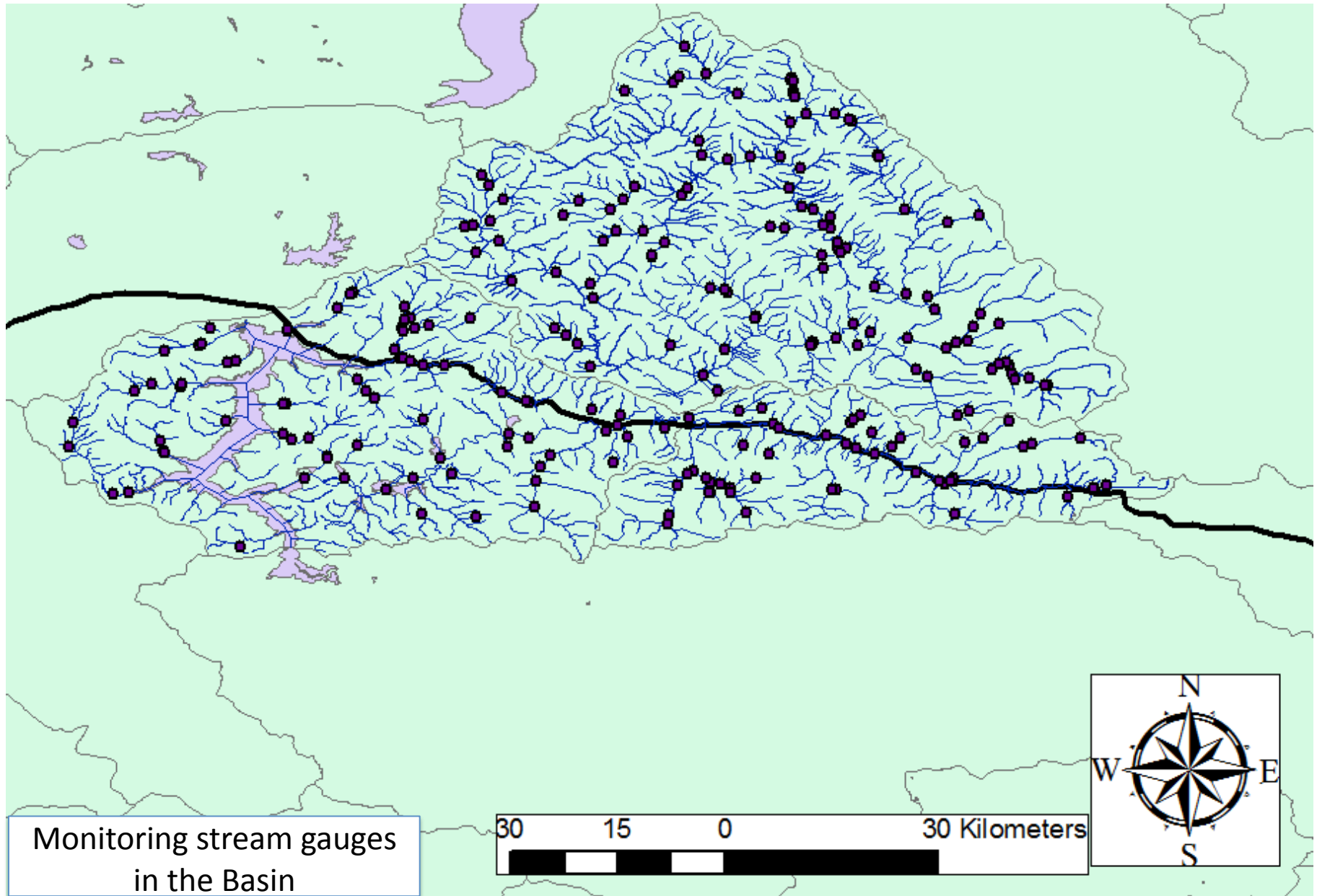
Local stream system and runoff relief

First expansion encompassing
the three surrounding
watersheds “the Basin”





Stream and runoff relief for the Basin



Second expansion highlighting original
21 sq. mile area.

