

Standards for an Existing Lot; Lot Size - 3/4 acre or Greater and Less than 2 acres, should be used. Each of the questions below follows the flow chart in Figure B-1.

Will an onsite system be used? Yes. A system serving only one property is an onsite system.

Is the soil Type G - N per Table 5 (reproduced here as Table B-1)? Yes. The permit lists the soil type as sand. Following Table B-1, sand is soil type N. If you cannot determine your soil type using Table B-1 then a system evaluator from the Bernalillo County Environmental Health Department can help you.

Does the disposal field have at least four feet of native soil directly beneath it? Yes. The depth to a limiting layer is 12 feet which means there are at least four feet of suitable native soil.

Is the slope of the soil beneath the disposal field less than 15 degrees? To convert percentage to degrees, use Table B-2. The slope for this example is 25 percent, which is 14 degrees. Therefore the answer to the question is yes.

**Performance Standards for an Existing Lot
Lot Size - 3/4 Acre or Greater and Less Than 2 Acres**

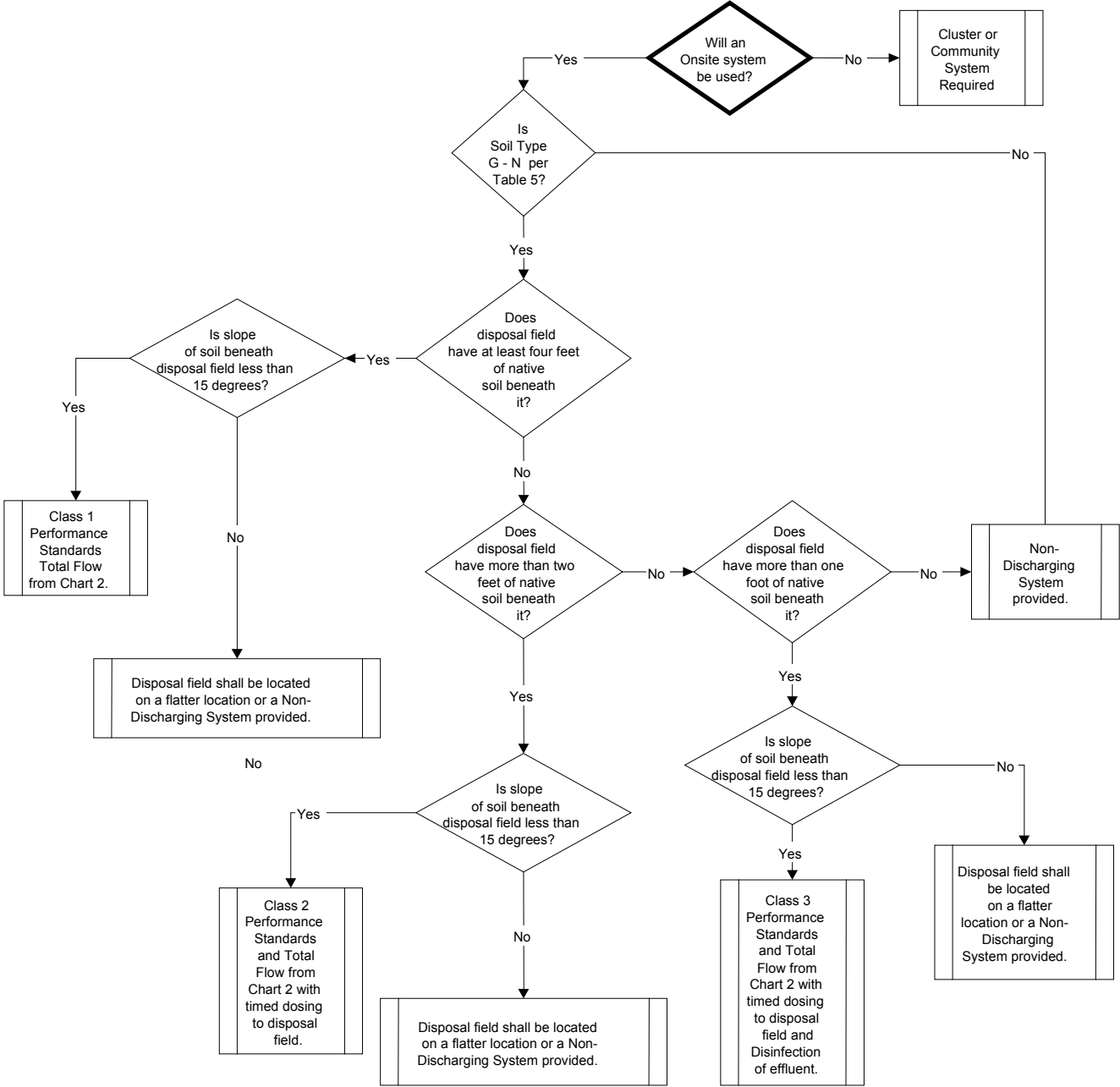


Figure B-1. Example flow chart for determining performance standards

Table B-1. Maximum soil infiltration rates.

Instructions: Read the questions in sequence beginning with A. The first "yes" response to a question corresponds to the maximum infiltration rate (gal/day/ft²).

Minimum Absorption Area Required = Design Flow divided by the Maximum Soil Infiltration Rate

Soil Type	Soil Structure (ASTM)	Maximum Monthly Average Loading	
		BOD ₅ > 30 ≤ 220mg/L TSS > 30 ≤ 150mg/L gal/day/ft ²	BOD ₅ ≤ 30 mg/L TSS ≤ 30 mg/L gal/day/ft ²
A	Is the horizon gravelly coarse sand or coarser?	0	0
B	Is the structure of the horizon moderate or strong platy?	0	0
C	Is the texture of the horizon sandy clay loam, clay loam, silty clay loam or finer and structure weak platy?	0	0
D	Is the moist consistence stronger than firm or any cemented class?	0	0
E	Is the texture sandy clay, clay or silty clay of high clay content and structure massive or weak?	0	0
F	Is the texture sandy clay loam, clay loam, silty clay loam or silt loam and structure massive?	0	0
G	Is the texture of the horizon loam or sandy loam and the soil structure massive?	0.40	0.46
H	Is the texture sandy clay, clay or silty clay of low clay content and structure moderate or strong?	0.30	0.35
I	Is the texture sandy clay loam, clay loam or silty clay loam and structure weak?	0.30 ¹	0.35 ¹
J	Is the texture sandy clay loam, clay loam or silty clay loam and structure moderate or strong?	0.60	0.69
K	Is the texture sandy loam, loam, or silt loam and structure weak?	0.60 ¹	0.69 ¹
L	Is the texture sandy loam, loam or silt loam and structure moderate or strong?	0.70	0.80
M	Is the texture fine sand, very fine sand, loamy fine sand, or loamy very fine sand?	0.70 ¹	0.80 ¹
N	Is the texture coarse sand, loamy sand or sand?	1.00	1.15

Note 1: Pressurized distribution system required.

Table B-2. Conversions from percent to degrees for slope

Percent	Degrees
5	3
10	6
15	9
20	14
25	17
30	19
35	21
40	24

You've now determined from Figure B-1 that the example system must meet Class 1 Performance Standards and that the flow must not exceed the total flow requirements in Chart 2. Chart 2 is reproduced as Figure B-2. To use the chart, first look on Table B-3 (Performance Standards for Effluent) under Class 1 and find TN (total nitrogen). For Class 1 standards, total nitrogen must be less than or equal to 60 mg/l. Now refer to Chart 2 (Figure B-2) and look for the area of the chart labeled "60 mg/l TN or less required." The red line above this indicates the upper limit of flow allowed to meet the total nitrogen criterion of 60 mg/l or less. To find out if your current flow is allowable, find your property size (1.47 acres) on the horizontal axis on the bottom. Follow an imaginary vertical line upward until it intersects the red line. Where it intersects the red line, follow an imaginary horizontal line left until you intersect the left vertical axis. This is the maximum allowable flow. In this example, the allowable flow is 650 gallons per day. Therefore, the design flow of 600 gallons per day is acceptable and the system meets the ordinance.

Table B-3. Performance Standards for Effluent.

Class 1	Class 2	Class 3	Disinfection
Settleable Solids \leq 0.5ml/l	Settleable Solids \leq 0.5ml/l	Settleable Solids \leq 0.5ml/l	Fecal \leq 25 MPN/100ml
BOD \leq 150 mg/l	BOD \leq 30 mg/l	BOD \leq 30 mg/l	
TSS \leq 60 mg/l	TSS \leq 30 mg/l	TSS \leq 30 mg/l	
Fecal \leq 10 ⁶ MPN/100ml	Fecal \leq 10 ⁴ MPN/100ml	Fecal \leq 10 ³ MPN/100ml	
TN \leq 60 mg/l	TN \leq 40 mg/l	TN \leq 20 mg/l	

The Minimum Setback Distances

The existing example system, with the addition of an effluent filter, will meet the requirements of the new ordinance. Other items that will need to be checked include the Minimum Setback Distances in Table B-4. The distance from the septic tank and the disposal field to each of the items listed on Table B-4 must be measured. If the distance measured is equal to or greater than the minimum setback distance in Table B-4, you have met the requirements. If the distances are less than those shown in Table B-4, you may need to request a variance from the County or modify your system.

What changes need to be met?

Assuming your setback distances are adequate and no other problems arise, then the example system will only need to “upgrade” the following on January 1, 2015:

1. The addition of an effluent filter to the septic tank; and
2. The homeowner must obtain an operating permit.

Table B-4. Minimum setback distances.

Physical Feature	Watertight Tank	Disposal Component
Arroyos, drainage & irrigation ditches	15 feet ^a + depth of channel	25 feet ^a + depth of channel
Building	5 feet	8 feet
Disposal Component	10 feet	10 feet
Distribution Box	10 feet	10 feet
Downslope Compacted Area	N/A	25 feet ^b
Property Line	5 feet	5 feet ^c
Swimming Pool	3 feet	15 feet
OHWL of Surface Water	3 feet	50 feet
Potable Water line ^d	Per New Mexico Plumbing and Mechanical Code	Per New Mexico Plumbing and Mechanical Code
Private and Irrigation Wells ^d	50 feet ^c	100 feet ^c
Public Well ^d	100 feet ^c	200 feet ^c

**Chart 2
Maximum Total Flow**

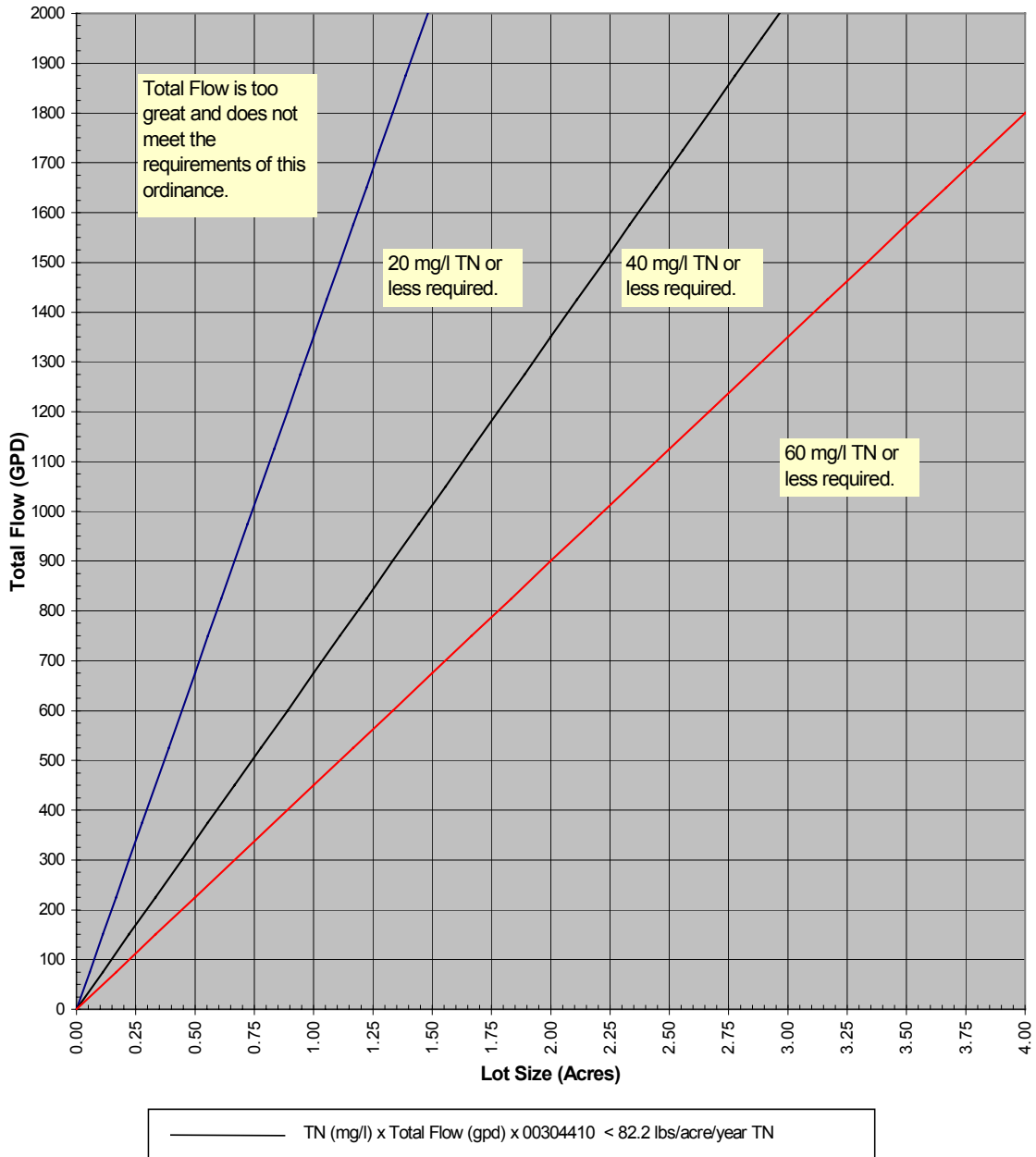


Figure B-2. Maximum total flow chart for existing lots 3/4 -2 acres in size.