

**You might find this additional information useful...**

---

This article cites 34 articles, 21 of which you can access free at:

<http://jap.physiology.org/cgi/content/full/98/3/804#BIBL>

This article has been cited by 7 other HighWire hosted articles, the first 5 are:

**Training in hypoxia fails to further enhance endurance performance and lactate clearance in well-trained men and impairs glucose metabolism during prolonged exercise**

V. Lecoultrre, A. Boss, L. Tappy, F. Borrani, C. Tran, P. Schneiter and Y. Schutz  
*Exp Physiol*, February 1, 2010; 95 (2): 315-330.

[Abstract] [Full Text] [PDF]

**Effects of high-intensity training on muscle lactate transporters and postexercise recovery of muscle lactate and hydrogen ions in women**

D. Bishop, J. Edge, C. Thomas and J. Mercier  
*Am J Physiol Regulatory Integrative Comp Physiol*, December 1, 2008; 295 (6): R1991-R1998.

[Abstract] [Full Text] [PDF]

**Effect of weight loss on lactate transporter expression in skeletal muscle of obese subjects**

L. Metz, J. Mercier, A. Tremblay, N. Almeras and D. R. Joannisse  
*J Appl Physiol*, March 1, 2008; 104 (3): 633-638.

[Abstract] [Full Text] [PDF]

**Effects of high-intensity training on MCT1, MCT4, and NBC expressions in rat skeletal muscles: influence of chronic metabolic alkalosis**

C. Thomas, D. Bishop, T. Moore-Morris and J. Mercier  
*Am J Physiol Endocrinol Metab*, October 1, 2007; 293 (4): E916-E922.

[Abstract] [Full Text] [PDF]

**Importance of pH regulation and lactate/H<sup>+</sup> transport capacity for work production during supramaximal exercise in humans**

L. Messonnier, M. Kristensen, C. Juel and C. Denis  
*J Appl Physiol*, May 1, 2007; 102 (5): 1936-1944.

[Abstract] [Full Text] [PDF]

Updated information and services including high-resolution figures, can be found at:

<http://jap.physiology.org/cgi/content/full/98/3/804>

Additional material and information about *Journal of Applied Physiology* can be found at:

<http://www.the-aps.org/publications/jappl>

---

This information is current as of September 3, 2010 .

## Monocarboxylate transporters, blood lactate removal after supramaximal exercise, and fatigue indexes in humans

C. Thomas,<sup>1</sup> S. Perrey,<sup>2</sup> K. Lambert,<sup>1</sup> G. Hugon,<sup>1</sup> D. Mornet,<sup>1</sup> and J. Mercier<sup>1</sup>

<sup>1</sup>Département de Physiologie des Interactions, Muscles et Pathologies Chroniques EA 701, Institut de Biologie, and <sup>2</sup>EA 2991 Efficience et Déficience Motrices, Montpellier, France

Submitted 24 September 2004; accepted in final form 1 November 2004

**Thomas, C., S. Perrey, K. Lambert, G. Hugon, D. Mornet, and J. Mercier.** Monocarboxylate transporters, blood lactate removal after supramaximal exercise, and fatigue indexes in humans. *J Appl Physiol* 98: 804–809, 2005. First published November 5, 2005; doi:10.1152/jappphysiol.01057.2004.—The present study investigated whether muscular monocarboxylate transporter (MCT) 1 and 4 contents are related to the blood lactate removal after supramaximal exercise, fatigue indexes measured during different supramaximal exercises, and muscle oxidative parameters in 15 humans with different training status. Lactate recovery curves were obtained after a 1-min all-out exercise. A biexponential time function was then used to determine the velocity constant of the slow phase ( $\gamma_2$ ), which denoted the blood lactate removal ability. Fatigue indexes were calculated during 1-min all-out ( $FI_{AO}$ ) and repeated 10-s ( $FI_{Sprint}$ ) cycling sprints. Biopsies were taken from the vastus lateralis muscle. MCT1 and MCT4 contents were quantified by Western blots, and maximal muscle oxidative capacity ( $V_{max}$ ) was evaluated with pyruvate + malate and glutamate + malate as substrates. The results showed that the blood lactate removal ability (i.e.,  $\gamma_2$ ) after a 1-min all-out test was significantly related to MCT1 content ( $r = 0.70$ ,  $P < 0.01$ ) but not to MCT4 ( $r = 0.50$ ,  $P > 0.05$ ). However, greater MCT1 and MCT4 contents were negatively related with a reduction of blood lactate concentration at the end of 1-min all-out exercise ( $r = -0.56$ , and  $r = -0.61$ ,  $P < 0.05$ , respectively). Among skeletal muscle oxidative indexes, we only found a relationship between MCT1 and glutamate + malate  $V_{max}$  ( $r = 0.63$ ,  $P < 0.05$ ). Furthermore, MCT1 content, but not MCT4, was inversely related to  $FI_{AO}$  ( $r = -0.54$ ,  $P < 0.05$ ) and  $FI_{Sprint}$  ( $r = -0.58$ ,  $P < 0.05$ ). We concluded that skeletal muscle MCT1 expression was associated with the velocity constant of net blood lactate removal after a 1-min all-out test and with the fatigue indexes. It is proposed that MCT1 expression may be important for blood lactate removal after supramaximal exercise based on the existence of lactate shuttles and, in turn, in favor of a better tolerance to muscle fatigue.

lactate kinetics; biexponential mathematical model; all-out exercise

DURING SUPRAMAXIMAL EXERCISE contracting skeletal muscles produce and accumulate lactate and proton ions. Lactate is either removed by oxidation in the muscle fibers or is released to the blood and removed by other cells according to the cell-cell lactate shuttle, which is facilitated by membrane-bound monocarboxylate transporters (MCTs; see Refs. 6, 14, 19, 30). In human skeletal muscle, two isoforms (MCT1 and MCT4) with different kinetic properties have been described (36). MCT1 has been found predominantly in oxidative muscles and only in small amounts in glycolytic muscles, whereas

MCT4 has been demonstrated with a large fiber type variability (14, 29).

MCT1 and MCT4 contents in human skeletal muscle have been shown to be elevated after a period of endurance (7, 14) and high-intensity training (7, 14, 25, 28). Only a few studies have investigated expression of MCTs and their responses during exercise in humans (14, 21). Both MCT1 and MCT4 were found to be associated with net muscle lactate release during submaximal exercises (7, 14). Although MCT1 and MCT4 are coexpressed in mitochondria and sarcolemmal membrane (4, 14), only MCT1 appears to participate in increased lactate oxidation after training, by facilitating intramuscular lactate transport (14).

After supramaximal exercise, blood lactate removal can be described by a biexponential function (16–18), and the low velocity constant of this function ( $\gamma_2$ ) reflects the net blood lactate removal ability. Recently, we reported that maximal muscle oxidative capacity was related to  $\gamma_2$  after supramaximal exercise in humans with different training status (34). As MCT1 content is related to muscle oxidative capacity (14, 26), we hypothesized therefore that MCT1 content may also be associated with net blood lactate removal.

In an attempt to verify this hypothesis, we investigated the expression of MCT1 in human skeletal muscle and the velocity constant of net blood lactate removal during recovery from a supramaximal exercise in humans with different training status. Because endurance training is associated with a reduction in muscle (13) and blood lactate concentration (23) and induces an increase in skeletal MCT1 expression (7, 14), we further posited that MCT1 content may play a role in the reduction of blood lactate concentration after supramaximal exercise. Although MCT4 does not seem to be related to the lactate uptake from the blood (14), we also investigated the expression of MCT4.

### MATERIALS AND METHODS

#### Subjects

Fifteen male volunteers (means  $\pm$  SE; age:  $26.5 \pm 1.6$  yr, height:  $178.7 \pm 1.3$  cm, body mass:  $74.0 \pm 2.7$  kg) participated in this study. Informed consent was obtained from all subjects after the nature and risks involved in study participation were explained. The study was approved by the local Ethics Committee and conformed to the Declaration of Helsinki regarding the use of human subjects.

Subjects with different training status were deliberately targeted for this study, and subgroups were determined from the subjects' responses to a physical activity questionnaire and their maximal oxygen

Address for reprint requests and other correspondence: C. Thomas, Département de Physiologie des Interactions, Muscles et pathologies chroniques EA 701, Institut de Biologie, Bvd Henri IV, 34060 Montpellier Cedex 2, France (E-mail: thomasclaire@wanadoo.fr).

The costs of publication of this article were defrayed in part by the payment of page charges. The article must therefore be hereby marked "advertisement" in accordance with 18 U.S.C. Section 1734 solely to indicate this fact.

uptake ( $\dot{V}O_{2\max}$ ) values. The group consisted of untrained subjects ( $n = 4$ ,  $\dot{V}O_{2\max}$  of  $52.6 \pm 5.4 \text{ ml}\cdot\text{min}^{-1}\cdot\text{kg}^{-1}$ ), recreational athletes ( $n = 3$ ,  $\dot{V}O_{2\max}$  of  $58.5 \pm 1.2 \text{ ml}\cdot\text{min}^{-1}\cdot\text{kg}^{-1}$ ), and middle-distance (MD;  $n = 4$ ,  $\dot{V}O_{2\max}$  of  $64.5 \pm 1.1 \text{ ml}\cdot\text{min}^{-1}\cdot\text{kg}^{-1}$ ) and long-distance (LD;  $n = 4$ ,  $\dot{V}O_{2\max}$  of  $66.9 \pm 1.9 \text{ ml}\cdot\text{min}^{-1}\cdot\text{kg}^{-1}$ ) runners. The untrained subjects had a normal level of physical activity without any athletic training, whereas the recreational athletes trained at low intensity two to three times per week but did not compete. The MD runners competed in the 800-m and 1,500-m events and trained five to six times per week. Their training included frequent high-intensity sessions alternated with endurance sessions. The LD runners competed in events of 5 km or more. They trained eight to ten times per week and ran an average of 110 km per week, including high-intensity workouts with 400- to 3,000-m intervals and continuous running (10–25 km).

### Experimental Design

All subjects came to the laboratory for the three exercise sessions, as well as for the skeletal muscle biopsy. At least 48 h separated the exercise sessions, and the muscle biopsy was performed 1 wk after the last exercise. The subjects performed all exercise tests at a laboratory temperature of 22°C. An initial laboratory visit was scheduled to obtain data on physical characteristics and individual maximal oxygen uptake ( $\dot{V}O_{2\max}$ ). During the second visit, the subjects were familiarized with the testing procedure on a cycle ergometer. In the third session, they performed a 1-min all-out exercise followed by 60 min of recovery and then performed 10 short cycling sprints separated by 30-s recovery intervals. Each subject was instructed to refrain from intense physical exercise for 48 h before this third visit. In the final session, a muscle biopsy was taken from the vastus lateralis to determine MCT1 and MCT4 contents, citrate synthase (CS) activity, and maximal muscle oxidative capacity.

### Assessment of $\dot{V}O_{2\max}$

At the beginning of the study, all subjects underwent an incremental maximal exercise test on a treadmill (LE 200 CE Jaegger, Hoechberg, Germany). During the test, oxygen uptake ( $\dot{V}O_2$ ), carbon dioxide production, and minute ventilation were measured breath by breath by means of an open circuit metabolic cart (Oxycon Pro, Jaegger). The exercise test increments were designed to exhaust the subject within 10–15 min. Each stage consisted of a 2-min exercise period and increased by 1 km/h.

### Supramaximal Exercises

The subjects performed all exercise tests on a standard friction-loaded cycle ergometer (Monark type 818 E, Stockholm, Sweden) specifically equipped with both a strain gauge (Interface MFG type, Scottsdale, AZ) and an optical encoder (Hengstler type RIS IP50, Aldingen, Germany; for details, see Ref. 1). The strain gauge and the optical encoder measured the friction force applied to the belt and the flywheel displacement, respectively. The flywheel velocity was determined using a first-order derivation of the flywheel displacement, and the power output was calculated from the product of total force and flywheel velocity. The values of velocity, force, and power output were collected at 50 Hz and sent to a personal computer for subsequent analysis. For all tests, subjects were in the seated position during exercise and in the supine position on a bed during rest and recovery. All tests started with the front pedal crank at  $\sim 45^\circ$  to the horizontal to facilitate the best starting push. All tests were performed between 8 and 10 AM after an overnight fast.

**Session 1.** The first test on the cycle ergometer, a force-velocity test, consisted of the repetition of short maximal sprints using different braking forces after a 5-min warm-up. The duration of each sprint was fixed at 8 s, the time it took for a vigorously motivated subject to attain his maximal velocity as rapidly as possible after the starting

signal. All the subjects started the test randomly against friction loads corresponding to 0.4, 0.6, and 0.8 N/kg of body mass. Each sprint was separated by at least 5 min of rest. At the signal, the subjects were told to remain on the saddle and to pedal as fast as possible to reach maximal pedaling rate. Each subject was verbally encouraged throughout each sprint.

These sprints allowed us to familiarize the subjects with the cycle ergometer and to calculate the optimal friction load against which they would perform during the second session. In fact, the velocity, force, and power values (averaged per half-pedal revolution) recorded during the acceleration phase of the three sprints were used to draw the individual force- and power-velocity relationships (1). The optimal values of friction force and velocity at which the highest power output was reached were determined from these relationships.

**Session 2.** During this session, each subject performed an all-out test, which consisted of 1 min of supramaximal all-out cycling against the optimal load determined during the force-velocity test. Before this test, subjects warmed up for 10 min on the cycle ergometer and then rested for 5 min. They were then instructed to pedal as fast as possible from the start of exercise and were verbally encouraged to maintain maximal pedaling speed throughout the test. We generally informed subjects every 15 s up to 45 s and then counted down to the end of the test every 5 s. All subjects recovered in supine position for 1 h. The mean, peak, and end power outputs values ( $P_{\text{MeanAO}}$ ,  $P_{\text{MaxAO}}$ , and  $P_{\text{EndAO}}$ ) were determined, and the fatigue index of the all-out test for power ( $FI_{\text{AO}}$ ) output was calculated as the percentage of decline from peak to end values for each subject.

The subjects then performed a 6-min warm-up on the cycle ergometer at a moderate power output. After 5 min of rest, the subjects performed 10 consecutive 10-s sprints separated by 30-s recovery intervals against a friction load corresponding to 50% of the optimal value of the friction force for each subject (31). The fatigue index of the sprints for peak power output ( $FI_{\text{sprint}}$ ) was calculated as the percentage of decline from the first sprint ( $P_{\text{MaxSprint1}}$ ) to the tenth sprint ( $P_{\text{MaxSprint10}}$ ) (31).

### Blood Lactate

Blood samples were drawn from a 32-mm catheter placed into a superficial forearm vein. The blood samples were collected in tubes containing heparin: at rest; just after the warm-up; and at 0, 1, 2, 3, 4, 5, 6, 7, 8, 9, 10, 12, 15, 20, 30, 40, 50, and 60 min of recovery from the all-out test. Blood lactate content was analyzed enzymatically according to the spectrophotometric method of Gutmann and Wahlfeld (22). Each individual curve was fitted using the following biexponential equation (16, 18):  $[La(t)] = La(0) + A_1(1 - e^{-\gamma_1 t}) + A_2(1 - e^{-\gamma_2 t})$ , where  $La(t)$  and  $La(0)$  are the measured lactate concentrations in blood at time  $t$  after the end of exercise and at the beginning of the recovery;  $A_1$  and  $A_2$  (in mmol/l) are the amplitudes of the two exponential components; and  $\gamma_1$  and  $\gamma_2$  (per minute) are their respective velocity constants. The individual parameters of the biexponential function were fitted by means of an iterative nonlinear technique, using DataFit 6.0 software to determine the values of  $A_1$ ,  $A_2$ ,  $\gamma_1$ , and  $\gamma_2$ . The percentage of the variance explained by the use of the biexponential curve fit was determined by correlation of the observed and the predicted  $[La(t)]$  at each time and by squaring of the Pearson product-moment correlation coefficient.

### Skeletal Muscle Biopsy

Vastus lateralis muscle biopsies were taken by the percutaneous Bergström technique after local anesthesia (Xylocaine) 1 wk after all cycling exercise tests. The muscle samples were divided into two portions. One portion was immediately frozen in liquid nitrogen and stored at  $-80^\circ\text{C}$ . The other portion was used for the in situ respiration studies (35). As we previously reported, maximal muscle oxidative capacity, reflected by maximal ADP-stimulated mitochondrial respiration, was evaluated in an oxygraph cell on saponin-permeabilized



muscle fibers with pyruvate + malate and glutamate + malate as substrates (34).

**Sample preparation for Western blotting.** Proteins were isolated from muscles for Western blotting by a method previously described by McCullagh et al. (26) and previously used in our laboratory (15). Muscle protein concentrations were determined in duplicate by bicinchoninic acid assay (Pierce, Interchim, Montluçon, France) with the use of BSA as a standard.

**Western blotting of MCT1 and MCT4.** Affinity polyclonal antibodies directed against the carboxy terminus of human MCT1 and MCT4 were produced with the synthetic peptide C-Ahx-KDTEGGP-KEEESPV-OH for MCT1 and C-Ahx-GEVVHTPETSVOH for MCT4, like the sequence used by Brooks and coworkers (12, 14) and by Halestrap and associates (26, 36). Such peptides were linked with their cystein residue at keyhole limpet hemocyanin-activated carrier protein according to a protocol recommended by the manufacturer (Pierce), and the resulting solutions were injected as specific antigens for immunization of New Zealand White rabbits. Western blotting was probed with these antibodies and Chemicon International antibodies (Temecula, CA; rabbit anti-MCT1: AB3538P and rabbit anti-MCT4: AB3316P). Polyclonal antibodies yielded a single band on a Western blot that corresponded to 43 kDa, consistent with the molecular mass reported earlier (26). Antibody specificities were confirmed in preliminary experiments in which the peptides blocked the detection of MCT1 and MCT4. Samples of muscle homogenates (12 µg protein) and prestained molecular mass markers (Bio-Rad), were separated on 10% Bis-Tris-acrylamide gels (200 V for ~60 min) with the Novex system (Invitrogen, Groningen, The Netherlands). We prepared a large sample of a human biopsy. At each time, we used this sample to serve as control for all gels. Proteins were then transferred from the gels to polyvinylidene difluoride membranes (30 V, 180 min), and the membranes were incubated on a shaker overnight at 4°C temperature in *buffer D* [20 mmol/l Tris base, 137 mmol/l NaCl, 0.1 mol/l HCl, adjusted to pH 7.5, 0.1% (vol/vol) Tween 20, and 5% (wt/vol) nonfat dried milk]. The membranes were then incubated with diluted carboxy terminus of either MCT1 antibody (1:90,000) or MCT4 (1:90,000) in *buffer D* for 2 h at room temperature, followed by four washes in *buffer E* (i.e., *buffer D* without dried milk: 4 × 5-min washes), and then incubated for 50 min with goat anti-rabbit immunoglobulin G horseradish peroxidase-conjugated secondary antibody (1:10,000, BI 2407, BioSys, Compiègne, France) in *buffer E*. Membranes were washed as previously described, and MCT1 or MCT4 expression was detected by enhanced chemiluminescence (Biomax MR films, Kodak, Reuil-Malmaison, France). Films were developed and fixed using a Hyperprocessor (RNP 1700, Amersham, Les Ulis, France). MCT1 and MCT4 protein band densities were determined by scanning the blots on a scanner (AGFA Duo Scan T1200, New York, NY) and Scion Image software (Scion, Frederick, MD). Results were expressed in arbitrary optical density units as used by others (15).

**CS activity.** Homogenates for CS activity were prepared in buffer containing (in mM) 210 sucrose, 2 EGTA, 40 NaCl, 30 HEPES, 5 EDTA, and 2 phenylmethylsulfonyl fluoride (pH 7.4) and stored at -80°C. CS activity was assayed by a spectrophotometric method according to Srere (33). Changes in absorbance were recorded over 3 min at 412 nm at 25°C.

Table 1. Values of mechanical power output and the fatigue index during the 1-min all-out test

$P_{\text{MeanAO}}$ , W	448 ± 13
$P_{\text{MaxAO}}$ , W	1,203 ± 55
$P_{\text{EndAO}}$ , W	348 ± 24
$FI_{\text{AO}}$ , %	69 ± 3

Values are means ± SE for  $n = 14$  subjects.  $P_{\text{MeanAO}}$ ,  $P_{\text{MaxAO}}$ , and  $P_{\text{EndAO}}$  are mean, peak, and end power outputs, respectively.  $FI_{\text{AO}}$  is the fatigue index.

Table 2. Values of peak power output for sprints 1 and 10 and the fatigue index during the repeated short sprints

$P_{\text{MaxSprint1}}$ , W	1,275 ± 47
$P_{\text{MaxSprint10}}$ , W	1,044 ± 34
$FI_{\text{Sprint}}$ , %	17 ± 3

Values are means ± SE for  $n = 15$  subjects.  $P_{\text{MaxSprint1}}$  and  $P_{\text{MaxSprint10}}$  are the maximal power output during the first and the ten sprints.  $FI_{\text{Sprint}}$  is the fatigue index.

### Statistical Analysis

Descriptive statistics are expressed as means ± SE. Student's *t*-test was performed to compare MCT1 and MCT4 contents determined with different antibodies and to compare the level of MCTs between the well-trained group ( $n = 8$ : MD and LD runners) and less-trained subjects ( $n = 7$ : recreational and untrained subjects). Individual relationships between variables were studied by means of linear regressions using Statview software. The level of significance was set at  $P < 0.05$ .

### RESULTS

Some data were reported previously (34) but are repeated for convenience.

#### Mechanical Performance

The values for peak power output and mean power output during the 1-min all-out test and the 10 short repeated sprints are given in Tables 1 and 2.

#### Peak Blood Lactate Concentrations

Peak blood lactate concentrations measured during the recovery of all-out exercise were  $13.4 \pm 0.9$  mmol/l for the untrained subjects,  $13.8 \pm 1.6$  mmol/l for the recreational subjects,  $13.8 \pm 1.5$  mmol/l for the MD runners, and  $9.7 \pm 0.7$  mmol/l for the LD runners.

#### Blood Lactate Recovery Curves

As previously described (34), the biexponential model accurately fit the individual recovery curves obtained after the 1-min all-out exercise. The mean values of the parameters of the fit from the biexponential equation to the lactate recovery curves are reported in Table 3. In most cases, the biexponential equation accounted for >V98% of the variance in the measured lactate recovery curves. In addition, the fit accuracy for all subjects was comparable to that obtained previously by other authors (17).

Table 3. Parameters of the biexponential curves fitted to blood lactate recovery curves obtained from 1-min supramaximal cycling exercise

	[La(0)], mmol/l	$A_1$ , mmol/l	$\gamma_1$ , min <sup>-1</sup>	$A_2$ , mmol/l <sup>-1</sup>	$\gamma_2$ , min <sup>-1</sup>
Mean ± SE	5.2 ± 0.6	20.0 ± 7.3	0.266 ± 0.028	-28.0 ± 7	0.034 ± 0.005

Values are means ± SE for  $n = 15$  subjects.  $A_1$ ,  $\gamma_1$ ,  $A_2$ ,  $\gamma_2$  refer to the definition of the biexponential equation in lactate kinetics analysis. [La(0)], blood lactate concentration at the end of exercise.

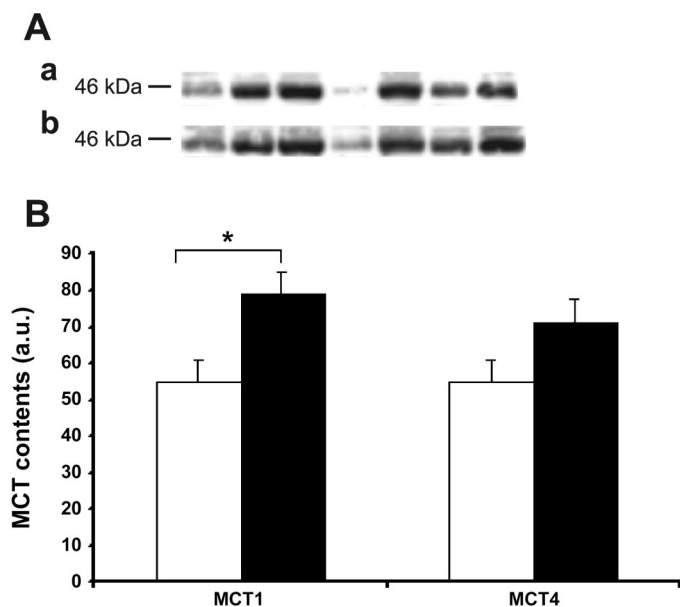


Fig. 1. A: comparison of monocarboxylate transporter (MCT) 1 contents in total muscle homogenates from different subjects determined with our antibodies (a) and those of Chemicon (b). B: comparison of MCT1 and MCT4 contents between less-trained subjects (open bars) and well-trained subjects (solid bars). au, Arbitrary units. \*Significant difference in MCT1 contents between less-trained subjects and well-trained subjects ( $P < 0.05$ ).

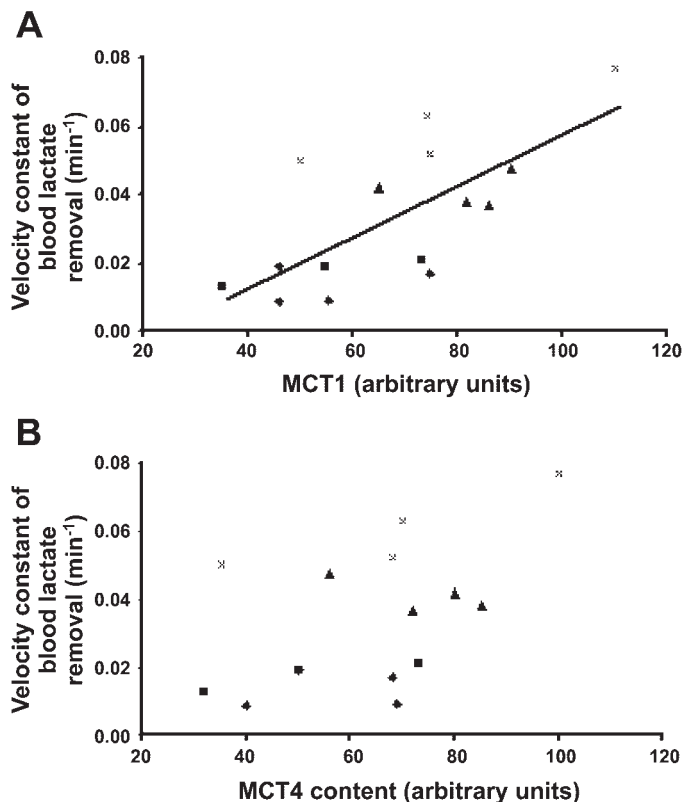


Fig. 2. A: relationship between the velocity constant of blood lactate removal  $\gamma_2$  after the 1-min supramaximal all-out test and the MCT1 content ( $r = 0.70$ ,  $P < 0.01$ ,  $n = 15$ ).  $\diamond$ , Untrained subjects;  $\blacksquare$ , recreational athletes;  $\blacktriangle$ , middle-distance runners;  $\times$ , long-distance runners. B: relationship between the velocity constant of blood lactate removal  $\gamma_2$  after the 1-min supramaximal all-out test and the MCT4 content ( $r = 0.50$ ,  $P > 0.05$ ,  $n = 15$ ). Symbols as in A.

### MCT1 and MCT4 Contents

No statistical difference was found in muscle MCT1 and MCT4 contents determined both with our antibodies and those of Chemicon (Fig. 1A). As shown in Fig. 1B, MCT1 content was significantly higher ( $P < 0.05$ ) in well-trained subjects [MD and LD runners:  $79 \pm 6$  arbitrary units (AU)] than in less-trained subjects (recreational and untrained:  $55 \pm 6$  AU). Surprisingly, there was no significant difference ( $P = 0.1$ ) in MCT4 content between the well-trained group ( $71 \pm 7$  AU) and less-trained subjects ( $55 \pm 6$  AU).

### Relationships Between MCT1 and MCT4 Contents and Other Variables

As shown in Fig. 2, A and B, the velocity constant of net blood lactate removal (i.e.,  $\gamma_2$ ) was positively correlated with the MCT1 content ( $r = 0.70$ ,  $P < 0.01$ ) but not with MCT4 content ( $r = 0.50$ ,  $P > 0.05$ ). Blood lactate concentration at the end of 1-min all-out exercise was negatively correlated to the MCT1 (Fig. 3A,  $r = -0.56$ ,  $P < 0.05$ ) and MCT4 contents (Fig. 3B,  $r = -0.61$ ,  $P < 0.05$ ).

MCT1 was correlated with maximal ADP-stimulated mitochondrial respiration measured with glutamate + malate ( $r = 0.63$ ,  $P < 0.05$ ) but not with pyruvate + malate as substrates ( $r = 0.38$ ,  $P > 0.05$ ). Surprisingly, MCT1 was not correlated with CS activity ( $r = 0.43$ ,  $P > 0.05$ ). MCT4 was not statistically correlated with either maximal ADP-stimulated mitochondrial respiration or with CS activity.

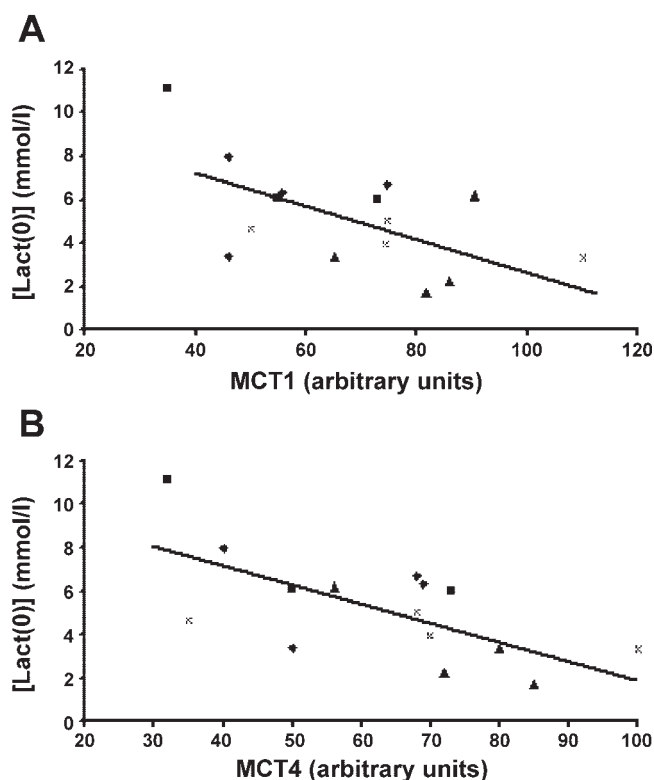


Fig. 3. A: relationship between the blood lactate concentration ([Lact(0)]) at the end of 1-min all-out exercise and the MCT1 content ( $r = -0.56$ ,  $P < 0.05$ ). Symbols as in Fig. 2A. B: relationship between the blood lactate concentration at the end of 1-min all-out exercise and the MCT4 content ( $r = -0.61$ ,  $P < 0.05$ ). Symbols as in Fig. 2A.

In addition, MCT1 content was negatively correlated with the fatigue indexes during the 1-min supramaximal all-out exercise test ( $r = -0.54$ ,  $P < 0.05$ ) and during the 10 short cycling sprints ( $r = -0.58$ ,  $P < 0.05$ ). No statistical correlation was found between MCT4 and both fatigue indexes.

## DISCUSSION

The main result of the present study was that the blood lactate removal ability (i.e.,  $\gamma_2$ ) after a 1-min all-out test was related to MCT1 content but not to MCT4. However, greater MCT1 and MCT4 contents were associated with a reduction of blood lactate concentration at the end of 1-min all-out exercise. Among indexes of skeletal muscle oxidative capacity, we only found a relationship between MCT1 and maximal ADP-stimulated respiration with glutamate + malate as substrates. Furthermore, MCT1 content, but not MCT4, was inversely related to the fatigue indexes measured during the 1-min all-out test and 10 successive cycling sprints.

Well-trained subjects presented significantly higher MCT1 expression compared with less-trained subjects, but no significant difference was found for MCT4, although a trend existed ( $P = 0.1$ ). These results agreed with past studies on endurance training effects on MCT1 and MCT4 expression (7, 14). Therefore, training status may influence the relationships between MCT1 content and net blood lactate removal ability, although some disparities for MCT1 expression appeared among well-trained subjects (Fig. 2A). In MD and LD runners, greater MCT1 content could facilitate lactate uptake at the sarcolemmal (2, 7, 14) and mitochondrial membranes (11, 14). Furthermore, when arterial lactate concentration and muscle blood flow are high (3), resting and previously active muscle fibers can uptake lactate during recovery because of the existence of lactate shuttles (9, 11).

In the present study, significant negative relationships were observed between both MCT1 and MCT4 contents and blood lactate concentration at the end of supramaximal exercise as a function of training status. This lower blood lactate in highest-trained subjects was in agreement with the fact that endurance training has been shown to decrease muscle lactate concentration by increasing lactate clearance (13) and by decreasing lactate production at low but not high power outputs (5). Indeed, based of some relationships presented here, we postulate that the lower lactate concentration was also due to an increased removal capability subsequent to increased expression of MCTs. This interpretation is in agreement with Green et al. (21). Indeed, they proposed that, after another type of exercise stimulus (submaximal prolonged cycle exercise), the observed lower lactate concentration was likely a result of an increased lactate removal dependent on increases in blood flow and MCT levels. By facilitating blood and intramuscular lactate exchange and oxidation, MCT1 could depress net muscle lactate release (14).

In human cross-sectional studies (27, 29), lactate transport capacity and MCT1 content were positively correlated with the percentage of slow-twitch oxidative fibers, whereas MCT4 content presented a large fiber type variability (29). Because maximal muscle oxidative capacity is related to the percentage of slow-twitch fibers, we hypothesized that MCT1 content, but not MCT4, measured in this study would be positively correlated with maximal muscle oxidative capacity (34). The ab-

sence of relationship between MCT4 expression and either maximal muscle oxidative capacity or CS activity corroborates previous results in rats (10, 36) and humans (14). Surprisingly, MCT1 content was only related to the maximal muscle oxidative capacity measured with glutamate + malate but not with pyruvate + malate or with CS activity. These last results contrasted to previous well-established studies in rats (26) and in humans (14). This trend of a dissociation between oxidative metabolism and lactate transport system was, however, in agreement with results obtained after high-intensity training (25, 28, 32), endurance training (32), or a single prolonged exercise bout in humans (21). It is difficult to know which metabolic adaptations are associated with the improved blood lactate removal, but nevertheless, it has been reported that the lactate transport is far higher than the metabolic clearance after intense exercise (24). So, metabolism appears to be a crucial factor and limitations in the membrane transport capacity are of minor importance (20), although we cannot rule out a regulatory role for lactate carrier with training.

Finally, removal of lactate and protons from skeletal muscle seems to be important to maintain force production. We found that the fatigue indexes measured during the continuous and intermittent supramaximal exercise were inversely related to MCT1 expression. We hypothesized therefore that high lactate and proton transport can prevent fatigue during different types of supramaximal exercises, because the beneficial effects of lactate anions providing oxidizable substrate and gluconeogenic precursors have been recognized (8).

In conclusion, the present study demonstrated that skeletal muscle MCT1 expression was correlated with the velocity constant of net blood lactate removal after a 1-min all-out test and inversely with the fatigue indexes measured during continuous and intermittent supramaximal all-out exercises. It is proposed that MCT1 expression may be important for blood lactate removal after supramaximal exercise and, in turn, in favor of a better tolerance to muscle fatigue.

## ACKNOWLEDGMENTS

The authors thank Fabien Junius, Magali Bonnet, Marie-Chantal Granat, and Anne Levasseur for technical assistance. We thank also David Bishop for English correction.

## GRANTS

The present study was supported by a Research Grant from Laboratoire MERCK-MF Richelet (Paris, France).

## REFERENCES

1. **Arsac LM, Belli A, and Lacour JR.** Muscle function during brief maximal exercise: accurate measurements on a friction-loaded cycle ergometer. *Eur J Appl Physiol Occup Physiol* 74: 100–106, 1996.
2. **Baker SK, McCullagh KJ, and Bonen A.** Training intensity-dependent and tissue-specific increases in lactate uptake and MCT-1 in heart and muscle. *J Appl Physiol* 84: 987–994, 1998.
3. **Bangsbo J, Aagaard T, Olsen M, Kiens B, Turcotte LP, and Richter EA.** Lactate and H<sup>+</sup> uptake in inactive muscles during intense exercise in man. *J Physiol* 488: 219–229, 1995.
4. **Benton CR, Campbell SE, Tonouchi M, Hatta H, and Bonen A.** Monocarboxylate transporters in subsarcolemmal and intermyofibrillar mitochondria. *Biochem Biophys Res Commun* 323: 249–253, 2004.
5. **Bergman BC, Wolfel EE, Butterfield GE, Lopaschuk GD, Casazza GA, Horning MA, and Brooks GA.** Active muscle and whole body lactate kinetics after endurance training in men. *J Appl Physiol* 87: 1684–1696, 1999.

6. **Bonen A.** The expression of lactate transporters (MCT1 and MCT4) in heart and muscle. *Eur J Appl Physiol* 86: 6–11, 2001.
7. **Bonen A, McCullagh KJ, Putman CT, Hultman E, Jones NL, and Heigenhauser GJ.** Short-term training increases human muscle MCT1 and femoral venous lactate in relation to muscle lactate. *Am J Physiol Endocrinol Metab* 274: E102–E107, 1998.
8. **Brooks GA.** Current concepts in lactate exchange. *Med Sci Sports Exerc* 23: 895–906, 1991.
9. **Brooks GA.** Intra- and extra-cellular lactate shuttles. *Med Sci Sports Exerc* 32: 790–799, 2000.
10. **Brooks GA, Brown MA, Butz CE, Sicurello JP, and Dubouchaud H.** Cardiac and skeletal muscle mitochondria have a monocarboxylate transporter MCT1. *J Appl Physiol* 87: 1713–1718, 1999.
11. **Brooks GA, Dubouchaud H, Brown M, Sicurello JP, and Butz CE.** Role of mitochondrial lactate dehydrogenase and lactate oxidation in the intracellular lactate shuttle. *Proc Natl Acad Sci USA* 96: 1129–1134, 1999.
12. **Butz CE, McClelland GB, and Brooks GA.** MCT1 confirmed in rat striated muscle mitochondria. *J Appl Physiol* 97: 1059–1066, 2004.
13. **Donovan CM and Brooks GA.** Endurance training affects lactate clearance, not lactate production. *Am J Physiol Endocrinol Metab* 244: E83–E92, 1983.
14. **Dubouchaud H, Butterfield GE, Wolfel EE, Bergman BC, and Brooks GA.** Endurance training, expression, and physiology of LDH, MCT1, and MCT4 in human skeletal muscle. *Am J Physiol Endocrinol Metab* 278: E571–E579, 2000.
15. **Eydoux N, Dubouchaud H, Py G, Granier P, Prefaut C, and Mercier J.** Lactate transport in rat sarcolemmal vesicles after a single bout of submaximal exercise. *Int J Sports Med* 21: 393–399, 2000.
16. **Freund H and Gendry P.** Lactate kinetics after short strenuous exercise in man. *Eur J Appl Physiol Occup Physiol* 39: 123–135, 1978.
17. **Freund H, Lonsdorfer J, Oyono-Enguelle S, Lonsdorfer A, and Bogui P.** Lactate exchange and removal abilities in sickle cell patients and in untrained and trained healthy humans. *J Appl Physiol* 73: 2580–2587, 1992.
18. **Freund H and Zouloumian P.** Lactate after exercise in man: IV. Physiological observations and model predictions. *Eur J Appl Physiol Occup Physiol* 46: 161–176, 1981.
19. **Garcia CK, Goldstein JL, Pathak RK, Anderson RG, and Brown MS.** Molecular characterization of a membrane transporter for lactate, pyruvate, and other monocarboxylates: implications for the Cori cycle. *Cell* 76: 865–873, 1994.
20. **Gladden LB.** Lactate uptake by skeletal muscle. *Exerc Sport Sci Rev* 17: 115–155, 1989.
21. **Green H, Halestrap A, Mockett C, O'Toole D, Grant S, and Ouyang J.** Increases in muscle MCT are associated with reductions in muscle lactate after a single exercise session in humans. *Am J Physiol Endocrinol Metab* 282: E154–E160, 2002.
22. **Gutmann I and Wahlefeld AM.** L-(+)-Lactate determination with lactate dehydrogenase and NAD. In: *Methods of Enzymatic Analysis*. New York: Academic, 1974, p. 1464–1472.
23. **Itoh H and Ohkuwa T.** Peak blood ammonia and lactate after submaximal, maximal and supramaximal exercise in sprinters and long-distance runners. *Eur J Appl Physiol Occup Physiol* 60: 271–276, 1990.
24. **Juel C.** Lactate-proton cotransport in skeletal muscle. *Physiol Rev* 77: 321–358, 1997.
25. **Juel C, Klarskov C, Nielsen JJ, Krstrup P, Mohr M, and Bangsbo J.** Effect of high-intensity intermittent training on lactate and H<sup>+</sup> release from human skeletal muscle. *Am J Physiol Endocrinol Metab* 286: E245–E251, 2004.
26. **McCullagh KJ, Poole RC, Halestrap AP, O'Brien M, and Bonen A.** Role of the lactate transporter (MCT1) in skeletal muscles. *Am J Physiol Endocrinol Metab* 271: E143–E150, 1996.
27. **Pilegaard H, Bangsbo J, Richter EA, and Juel C.** Lactate transport studied in sarcolemmal giant vesicles from human muscle biopsies: relation to training status. *J Appl Physiol* 77: 1858–1862, 1994.
28. **Pilegaard H, Domino K, Noland T, Juel C, Hellsten Y, Halestrap AP, and Bangsbo J.** Effect of high-intensity exercise training on lactate/H<sup>+</sup> transport capacity in human skeletal muscle. *Am J Physiol Endocrinol Metab* 276: E255–E261, 1999.
29. **Pilegaard H, Terzis G, Halestrap A, and Juel C.** Distribution of the lactate/H<sup>+</sup> transporter isoforms MCT1 and MCT4 in human skeletal muscle. *Am J Physiol Endocrinol Metab* 276: E843–E848, 1999.
30. **Price NT, Jackson VN, and Halestrap AP.** Cloning and sequencing of four new mammalian monocarboxylate transporter (MCT) homologues confirms the existence of a transporter family with an ancient past. *Biochem J* 329: 321–328, 1998.
31. **Ratel S, Duche P, Hennegrave A, Van Praagh E, and Bedu M.** Acid-base balance during repeated cycling sprints in boys and men. *J Appl Physiol* 92: 479–485, 2002.
32. **Roth DA and Brooks GA.** Training does not affect zero-trans lactate transport across mixed rat skeletal muscle sarcolemmal vesicles. *J Appl Physiol* 75: 1559–1565, 1993.
33. **Srere P.** Citrate synthase. *Methods Enzymol* 13: 3–5, 1969.
34. **Thomas C, Sirvent P, Perrey S, Raynaud E, and Mercier J.** Relationships between maximal muscle oxidative capacity and blood lactate removal after supramaximal exercise and fatigue indexes in humans. *J Appl Physiol* 97: 2132–2138, 2004.
35. **Veksler VI, Kuznetsov AV, Sharov VG, Kapelko VI, and Saks VA.** Mitochondrial respiratory parameters in cardiac tissue: a novel method of assessment by using saponin-skinned fibers. *Biochim Biophys Acta* 892: 191–196, 1987.
36. **Wilson MC, Jackson VN, Heddl C, Price NT, Pilegaard H, Juel C, Bonen A, Montgomery I, Hutter OF, and Halestrap AP.** Lactic acid efflux from white skeletal muscle is catalyzed by the monocarboxylate transporter isoform MCT3. *J Biol Chem* 273: 15920–15926, 1998.